

International ERS/ATS Guidelines on Definition, Evaluation and Treatment of Severe Asthma

Kian Fan Chung^{1*}; Sally E Wenzel^{2*}; Jan L Brozek³; Andrew Bush⁴; Mario Castro⁵; Peter J Sterk⁶; Ian M Adcock⁷; Eric D Bateman⁸; Elisabeth H Bel⁹; Eugene R Bleecker¹⁰; Louis-Philippe Boulet¹¹; Christopher Brightling¹²; Pascal Chanez¹³; Sven-Erik Dahlen¹⁴; Ratko Djukanovic¹⁵; Urs Frey¹⁶; Mina Gaga¹⁷; Peter Gibson¹⁸; Qutayba Hamid¹⁹; Nizar N Jajour²⁰; Thais Mauad²¹; Ronald L Sorkness²²; W Gerald Teague²³.

*KFC and SEW contributed equally to this document.

¹Kian Fan Chung, National Heart & Lung Institute, Imperial College & Biomedical Research Unit, Royal Brompton Hospital, London, UK

²Sally E Wenzel, University of Pittsburgh, Pittsburgh, PA, USA

³Jan L Brozek, Department of Clinical Epidemiology & Biostatistics & Medicine, McMaster University, Hamilton, Ontario, Canada

⁴Andrew Bush, National Heart & Lung Institute, Imperial College & Biomedical Research Unit, Royal Brompton Hospital, London SW3, UK

⁵Mario Castro, Washington University, St Louis, MO, USA

⁶Peter J Sterk, Department of Respiratory Medicine, Academic Medical Centre, Amsterdam, The Netherlands

⁷Ian M Adcock, National Heart & Lung Institute, Imperial College, London, UK

⁸Eric D Bateman, University of Cape Town, Cape Town, South Africa

⁹Elisabeth H Bel, Academic Medical Centre, University of Amsterdam, Amsterdam, The Netherlands

¹⁰Eugene R Bleecker, Wake Forest University, Winston Salem, NC, USA

¹¹Louis-Philippe Boulet, Centre de Recherche de l'Institut Universitaire de Cardiologie et de Pneumologie de Quebec, Canada

¹²Christopher Brightling, Institute for Lung Health, Leicester University, Leicester, UK

¹³Pascal Chanez, Departement des Maladies Respiratoires, Marseille Universite, Marseille, France.

¹⁴Sven-Erik Dahlen, Institute of Environmental Medicine, Karolinska Institutet, Stockholm, Sweden

¹⁵Ratko Djukanovic, Southampton NIHR Respiratory Biomedical Research Unit, University of Southampton School of Medicine & Southampton General Hospital, Southampton UK

¹⁶Urs Frey, University Children's Hospital (UKBB), University of Basel, Basel, Switzerland

¹⁷Mina Gaga, 7th Respiratory Department and Asthma Centre, Athens Chest Hospital, Athens, Greece

¹⁸Peter Gibson, Hunter Medical Research Institute, John Hunter Hospital, Newcastle, Australia

¹⁹Qutayba Hamid, Meakins-Christie Laboratories, McGill University, Montreal, Quebec, Canada

²⁰Nizar N Jarjour, University of Wisconsin, Madison, WI, USA

²¹Thais Mauad, University Medical School, Sao Paulo, Brazil

²²Ronald L Sorkness, University of Wisconsin, Madison, WI, USA

²³W Gerald Teague, Division of Respiratory Medicine, Allergy, and Immunology, Department of Pediatrics, University of Virginia School of Medicine, VA, USA

Running title: ERS/ATS Severe Asthma Guidelines

Keywords: Severe asthma; difficult-to-treat asthma; therapy resistant asthma; Practice Guidelines; GRADE

Correspondence

Professor Kian Fan Chung
National Heart & Lung Institute
Imperial College
Dovehouse St
London SW3 6LY
UK
f.chung@imperial.ac.uk

ABSTRACT

Background:

Severe or therapy-resistant asthma is increasingly recognised as a major unmet need.

Purpose:

Supported by the American Thoracic Society (ATS) and European Respiratory Society (ERS), a Task Force reviewed the definition and provided recommendations and guidelines on the evaluation and treatment of severe asthma in children and adults.

Methods:

We performed a literature review followed by discussion by an expert committee according to the GRADE approach to develop specific clinical recommendations.

Results:

When the diagnosis of asthma is confirmed and comorbidities addressed, severe asthma is defined as asthma that requires treatment with high dose inhaled corticosteroids plus a second controller and/or systemic corticosteroids to prevent it from becoming “uncontrolled” or that remains “uncontrolled” despite this therapy. Severe asthma is a heterogeneous condition consisting of phenotypes such as eosinophilic asthma. Specific recommendations on the use of sputum eosinophil count and exhaled nitric oxide to guide therapy as well as treatment with anti-IgE antibody, methotrexate, macrolide antibiotics, antifungal agents and bronchial thermoplasty are provided.

Conclusion:

Coordinated research efforts for improved phenotyping will provide safe and effective biomarker-driven approaches to severe asthma therapy.

Executive Summary

The ATS-ERS task force on Severe Asthma includes an updated definition of severe asthma, a discussion of severe asthma phenotypes in relation to genetics, natural history, pathobiology and physiology, as well as sections on evaluation and treatment of severe asthma where specific recommendations for practice were made. See the unabridged online version of the document for detailed discussion of the definition of severe asthma, phenotypes and recommendations for practice.

Definition of severe asthma

When a diagnosis of asthma is confirmed and comorbidities have been addressed, severe asthma is defined as “asthma which requires treatment with high dose inhaled corticosteroids (ICS) (see Table 2 for doses in adults and children) plus a second controller (and/or systemic CS) to prevent it from becoming “uncontrolled” or which remains “uncontrolled” despite this therapy.”

Methodology

The methods used to develop clinical recommendations in this document follow the ATS and ERS guideline methodology. The Committee included clinicians and researchers with expertise in severe asthma and a methodologist who helped preparing systematic evidence summaries following the GRADE (Grading of Recommendations, Assessment, Development and Evaluation) approach. Potential conflicts of interests were managed according to the ATS and ERS rules.

The systematic searches for evidence to support the recommendations made in these guidelines identified very few randomized controlled trials with low risk of bias that would provide direct, consistent and precise evidence. Therefore, many recommendations are based on indirect evidence from studies performed in patients with mild to moderate asthma frequently providing imprecise estimates of desirable and undesirable health effects. Moreover, few studies assessed all outcomes that the Committee had identified as being critical in making the recommendations.

The Committee developed and graded the recommendations and assessed the quality of the supporting evidence according to the GRADE approach. Quality of evidence (confidence in the available estimates of treatment effects) is categorized as: high, moderate, low or very low based on consideration of risk of bias, directness, consistency and precision of the estimates. Low and very low quality evidence indicates that the estimated effects of interventions are very uncertain and further research is very likely to have an important impact on resulting recommendations. The strength of recommendations is expressed as either strong (We recommend...) or conditional (We suggest...) and has explicit implications (Table 1). Understanding the interpretation of these two grades is essential for sagacious clinical decision making.

Recommendations

Context	Recommendation		Strength	Quality of evidence	Values and preferences	Remarks
Computed tomography of chest	1	In children and adults with severe asthma without specific indications for chest HRCT based on history, symptoms and/or results of prior investigations we suggest that a chest HRCT only be done when the presentation is atypical.	conditional	very low	This recommendation places a relatively high value on identification of alternative diagnosis and comorbidities and a relatively low value on avoiding potential complications and cost of chest HRCT.	An atypical presentation of severe asthma includes such factors as, e.g. excessive mucus production, rapid decline in lung function, reduced carbon monoxide transfer factor coefficient and the absence of atopy in a child with difficult asthma.
Sputum eosinophil counts	2A	In adults with severe asthma, we suggest treatment guided by clinical criteria and sputum eosinophil counts performed in centres experienced in using this technique rather than by clinical criteria alone.	conditional	very low	The recommendation to use sputum eosinophil counts to guide therapy in adults places a higher value on possible clinical benefits from adjusting the treatment in selected patients and on avoidance of inappropriate escalation of treatment and a lower value on increased use of resources.	Because at the present time, measurement of sputum eosinophils has not yet been sufficiently standardized and is not widely available we suggest such an approach be used only in specialized centres experienced in this technique. Patients who are likely to benefit from this approach are those who can produce sputum, demonstrate
	2B	In children with severe asthma, we suggest treatment guided by clinical criteria alone rather than by clinical criteria and sputum eosinophil counts.	conditional	very low	The recommendation not to use sputum eosinophil counts to guide therapy in children places higher value on avoiding an intervention that is not standardized and not widely available and lower	persistent or at least intermittent eosinophilia and have severe asthma with frequent exacerbations. Clinicians should recognize that different choices will be appropriate for different patients.

					value on the uncertain and possibly limited clinical benefit.	
Exhaled nitric oxide	3	We suggest that clinicians do not use FeNO to guide therapy in adults or children with severe asthma.	conditional	very low	This recommendation places a higher value on avoiding additional resource expenditure and a lower value on uncertain benefit from monitoring FeNO.	
Anti-IgE antibody (Omalizumab)	4	In patients with severe allergic asthma we suggest a therapeutic trial of omalizumab both in adults and in children.	conditional	low (adults) very low (children)	This recommendation places higher value on the clinical benefits from omalizumab in some patients with severe allergic asthma and lower value on increased resource use.	Those adults and children aged 6 and above, with severe asthma who are considered for a trial of omalizumab, should have confirmed IgE-dependent allergic asthma uncontrolled despite optimal pharmacological and non-pharmacological management and appropriate allergen avoidance if their total serum IgE level is 30 to 700 IU/mL (in 3 studies the range was wider – 30 to 1300 IU/mL). Treatment response should be globally assessed by the treating physician taking into consideration any improvement in asthma control, reduction in exacerbations and unscheduled healthcare utilisation, and improvement in quality of life. If a patient does not respond within 4

						months of initiating treatment, it is unlikely that further administration of omalizumab will be beneficial.
Methotrexate	5	We suggest that clinicians do not use methotrexate in adults or children with severe asthma.	conditional	low	This recommendation places a relatively higher value on avoiding adverse effects of methotrexate and a relatively lower value on possible benefits from reducing the dose of systemic corticosteroids.	Evidence from randomized trials is only available for adults. Because of the probable adverse effects of methotrexate and need for monitoring therapy we suggest that any use of methotrexate is limited to specialized centres and only in patients who require daily OCS. If a decision to use methotrexate is made, a chest x-ray, complete blood count with differential and platelets, liver function tests, serum creatinine and transfer factor to carbon monoxide (DLCO), are recommended prior to and after commencing therapy.
Macrolide antibiotics	6	We suggest that clinicians do not use macrolide antibiotics in adults and children with severe asthma for the treatment of asthma.	conditional	very low	This recommendation places a relatively higher value on prevention of development of resistance to macrolide antibiotics, and relatively lower value on uncertain clinical benefits.	This recommendation applies only to the treatment of asthma; it does not apply to the use of macrolide antibiotics for other indications, e.g. treatment of bronchitis, sinusitis or other bacterial infections as indicated.
Antifungal agents	7A	We suggest antifungal agents in adults with severe	conditional	very low	The recommendation to use antifungal	In children, the evidence is limited to isolated case

		asthma and recurrent exacerbations of allergic bronchopulmonary aspergillosis (ABPA).			agents in patients with severe asthma and ABPA places a higher value on possible reduction of the risk of exacerbations and improved symptoms, and a lower value on avoiding possible adverse effects, drug interactions and increased use of resources.	reports. Children should be treated with antifungals only after the most detailed evaluation in a specialist severe asthma referral centre. As antifungal therapies are associated with significant and sometimes severe side-effects, including hepatotoxicity, clinicians should be familiar with these drugs and follow relevant precautions in monitoring for these, observing the limits to the duration of treatment recommended for each.
	7B	We suggest that clinicians do not use antifungal agents for the treatment of asthma in adults and children with severe asthma without ABPA irrespective of sensitization to fungi (i.e. positive skin prick test or fungus-specific IgE in serum).	conditional	very low	The recommendation not to use antifungal agents in patients with severe asthma without confirmed ABPA (irrespective of sensitization) places a higher value on avoiding possible adverse effects, interactions of antifungal agents with other medications and increased use of resources, and a lower value on uncertain possible benefits.	The recommendation not to use antifungal agents in patients with severe asthma without confirmed ABPA applies only to the treatment of asthma; it does not apply to the use of antifungal agents for other indications, e.g. treatment of invasive fungal infections.
Bronchial thermoplasty	8	We recommend that bronchial thermoplasty is performed in adults with severe asthma	strong	very low	This recommendation places a higher value on avoiding adverse effects, on	This is a strong recommendation, because of the very low confidence in the currently

		only in the context of an Institutional Review Board-approved independent systematic registry or a clinical study (recommendation, quality evidence).			an increased use of resources, and on a lack of understanding of which patients may benefit, and a lower value on the uncertain improvement in symptoms and quality of life.	available estimates of effects of bronchial thermoplasty in patients with severe asthma. Both potential benefits and harms may be large and the long-term consequences of this new approach to asthma therapy utilizing an invasive physical intervention are unknown. Specifically designed studies are needed to define its effects on relevant objective primary outcomes such as exacerbation rates, and on long-term effects on lung function. Studies are also needed to better understand the phenotypes of responding patients, its effects in patients with severe obstructive asthma ($FEV_1 < 60\%$ of predicted value) or in whom systemic corticosteroids are used, and its long-term benefits and safety. Further research is likely to have an important impact on this recommendation.
--	--	---	--	--	--	---

Scope and purpose

The purpose of this document is to revise the definition of severe asthma, discuss the possible phenotypes and provide guidance about the management of patients with severe asthma. The target audience of these guidelines is specialists in respiratory medicine and allergy managing adults and children with severe asthma. General internists, pediatricians, primary care physicians, other health care professionals and policy makers may also benefit from these guidelines. This document may also serve as the basis for development and implementation of locally-adapted guidelines.

Introduction

Although the majority of asthma patients can be effectively treated with currently available medications, a substantial subset exists who remain difficult to treat. These patients account for a relatively large proportion of resource expenditure. Much remains unclear regarding the best approaches to the management of these patients, or concerning the underlying mechanisms driving this process. In 1999 and in 2000, the first definitions of severe/refractory asthma were published respectively in the *European Respiratory Journal* and in the *American Journal of Respiratory and Critical Care Medicine*, with variations of these adopted by subsequent cohorts [1, 2]. In 2009, a 23-member joint Task Force from the American Thoracic Society and the European Respiratory Society consisting of adult and paediatric trained specialists and scientists with extensive experience of managing and investigating patients with asthma, particularly severe asthma, was formed to: 1) update the previous definitions, 2) identify potential mechanisms/phenotypes of severe asthma, 3) outline its evaluation and 4) provide recommendations on treatment, with respect to both adults and children. Another objective of this Task Force was to summarise the findings of the past 12 years that have elapsed since the previous reports [1, 2] and to propose directions for step-wise improvement in our understanding of severe asthma. Severe asthma is now widely accepted as a heterogeneous

disease, consisting of multiple phenotypes and studies are beginning to define phenotypic biomarkers, and phenotype targeted biologic therapies are increasingly showing efficacy.

METHODS

Committee composition and processes of disclosing and managing potential conflicts of interest, evidence synthesis, developing recommendations and peer review of the guidelines are described in detail in the online-only full-text document of these guidelines.

Briefly: This guideline represents a collaborative effort between the ATS and ERS. The Committee consisted of clinicians and researchers with recognized expertise in severe asthma and in the guideline development following the Grading of Recommendations Assessment, Development and Evaluation (GRADE) approach [3]. All committee members disclosed their potential conflicts of interest according to the ATS and ERS policies. During all deliberations members with perceived conflicts of interest abstained from decisions about specific recommendations related to the potential conflict of interest. The views and interests of the ATS and ERS as well as of any commercial entity that provided external funding for both professional societies had no influence on the final recommendations.

Disclosure of Potential Conflicts of Interest

Committee members disclosed all potential conflicts of interest according to the ATS and ERS policies. The chairs (KFC and SEW) reviewed and resolved all potential conflicts of interest of committee members. All potential conflicts of interest (including those of the chairs) were discussed with the chair of the Ethics and Conflict of Interest Committee of the ATS. During all deliberations, members with perceived conflicts of interest abstained from decisions about specific recommendations related to the potential conflict of interest. The ATS methodologist did not participate in the vote on any of the recommendations.

The ATS and ERS provided meeting facilities during their annual conferences and financial support for conference calls. The views and interests of the ATS and ERS as well as of any

commercial entity that provided external funding for both professional societies had no influence on the final recommendations.

Evidence summaries (Online Supplement 3) for each question were prepared following the GRADE approach [3] and reviewed by all committee members. We based the evidence summaries on existing up-to-date well done systematic reviews, if necessary, supplemented with additional recent randomized controlled trials (RCTs). When there was no recent valid systematic review available, we did not perform rigorous systematic reviews, but we systematically searched for relevant studies (Online Supplement 2).

We labelled the recommendations as either “strong” or “conditional” according to the GRADE approach. We used the words “we recommend” for strong recommendations and “we suggest” for conditional recommendations. Table 1 provides suggested interpretation of strong and conditional recommendations by patients, clinicians and health care policy makers.

Many questions relevant to the management of patients with severe asthma have been identified by the Committee as potentially important but have not yet been addressed (Online Supplement 2). The Committee intends to regularly update the document but not later than in 2015.

HOW TO USE THESE GUIDELINES

The ATS/ERS guidelines about the management of severe asthma are not intended to impose a standard of care. They provide the basis for rational decisions in the management of severe asthma. Clinicians, patients, third-party payers, institutional review committees, other stakeholders, or the courts should never view these recommendations as dictates. No guidelines and recommendations can take into account all of the often-compelling unique individual clinical circumstances. Therefore, no one charged with evaluating clinicians’ actions should attempt to apply the recommendations from these guidelines by rote or in a blanket fashion.

Statements about the underlying values and preferences as well as qualifying remarks accompanying each recommendation are its integral parts and serve to facilitate more accurate

interpretation. They should never be omitted when quoting or translating recommendations from these guidelines.

1. Task Force Definition of Severe Asthma (Box 1)

Stage 1: Confirm an asthma diagnosis and identify difficult-to-treat asthma. Inherent in the definition of severe asthma is the exclusion of individuals who present with “difficult” asthma in whom appropriate diagnosis and/or treatment of confounders vastly improves their current condition (see evaluation section). Therefore, it is recommended that patients presenting with “difficult asthma” have their asthma diagnosis confirmed and be evaluated and managed by an asthma specialist for more than 3 months. Thus, severe asthma according to the ATS-ERS definition only includes patients with refractory asthma and those in whom treatment of comorbidities such as severe sinus disease or obesity remains incomplete [4].

Stage 2. Differentiate Severe Asthma from Milder Asthma. When a diagnosis of asthma is confirmed and comorbidities addressed, severe asthma is defined as “asthma which requires treatment with high dose inhaled corticosteroids (ICS) (see Table 2 for doses in adults and children) plus a second controller (and/or systemic CS) to prevent it from becoming “uncontrolled” or which remains “uncontrolled” despite this therapy.” This definition includes patients who received an adequate trial of these therapies in whom treatment was stopped due to lack of response. In patients >6 years of age, “Gold Standard/International Guidelines treatment” is high dose ICS plus a long acting β_2 agonist, leukotriene modifier or theophylline and/or continuous or near continuous systemic CSs as background therapy [5-8]. This definition is similar to the recent Innovative Medicine Initiative, but does not address the group of patients identified by the World Health Organization (WHO) with untreated severe asthma [4, 9]. Although untreated severe asthma is an enormous problem in many areas where current therapies are not widely available, the definition of severe asthma agreed upon by the 2013 ATS-ERS Taskforce focuses on severe asthma refractory or insensitive to currently available

medications, including CSs, and asthma complicated by comorbidities, the types of greatest concern to the countries primarily served by the two societies [4].

Stage 3. Determine whether the severe asthma is controlled or uncontrolled. The background for criteria for uncontrolled asthma is presented in the Online Supplement 1. Any one of the following four criteria qualifies a patient as having uncontrolled asthma:

- 1) Poor symptom control: ACQ consistently >1.5 or ACT <20 (or “not well controlled” by NAEPP or GINA guidelines over the 3 months or evaluation [7, 10])
- 2) Frequent severe exacerbations: 2 or more bursts of systemic CSs (>3 days each) in the previous year
- 3) Serious exacerbations: at least one hospitalization, Intensive Care Unit stay or mechanical ventilation in the previous year
- 4) Airflow limitation: $FEV_1 < 80\%$ predicted (in the presence of reduced FEV_1/FVC defined as less than the lower limit) following a withhold of both short- and long-acting bronchodilators.

Evidence for any one of these four criteria while on current high-dose therapy identifies the patient as having “severe asthma” (Box 1). Patients who do not meet criteria for uncontrolled asthma, but whose asthma worsens on tapering of corticosteroids, will also meet the definition of severe asthma. Fulfilment of this definition predicts a high degree of future risk both from the disease itself (exacerbations and loss of lung function), as well as from side-effects of the medications.

2. Phenotyping : epidemiology, pathogenesis, pathobiology, structure and physiology

Phenotypes and clusters of severe asthma

It is increasingly evident that severe asthma is not a single disease as evidenced by the variety of clinical presentations, physiologic characteristics and outcomes. To better understand this heterogeneity, the concept of asthma phenotyping has emerged. A phenotype is defined as the

composite, observable characteristics of an organism, resulting from interaction between its genetic make-up and environmental influences, which are relatively stable - but not invariable - with time. Phenotyping integrates biological and clinical features, ranging from molecular, cellular, morphological, functional to patient-oriented characteristics with the goal to improve therapy (Figure 1). Detailed efforts in this regard require organization and integration of these defining characteristics into clinically recognizable phenotypes. Ultimately, these phenotypes should evolve into asthma 'endotypes', which combine clinical characteristics with identifiable mechanistic pathways. Their identification to date remains speculative at best [11]. In general, temporal stability of phenotypes will be required to provide evidence of their clinical usefulness. The ultimate clinical usefulness of these severe asthma phenotypes will be determined by their therapeutic consequences (see Evaluation).

There are currently two strategies to delineate phenotypes: hypothesis-based and unbiased approaches. Unbiased analyses are being applied to a broad range of clinical, physiologic and biologic characteristics, utilizing unsupervised hierarchical clustering stepwise discriminant and other approaches [12-15]. The Severe Asthma Research Program (SARP), using predominantly clinical characteristics, identified five clusters of asthma among adult patients with mild, moderate and severe asthma. They included three groups of mild, moderate and severe early-onset atopic asthma (based on range of lung function, medication use and frequency of exacerbations), a more severe late-onset obese group of primarily older women with moderate FEV₁ reductions and frequent oral corticosteroid (CS) use, and a later onset but long duration very severe, less atopic group, with less reversible airflow limitation [15]. Another adult asthma cohort analysis from the Leicester group included sputum eosinophil counts and identified 4 clusters including a similar early onset atopic-asthma, an obese non-eosinophilic asthma, an early onset symptom predominant-asthma, and a later onset inflammation predominant asthma [14]. In both cluster analyses, severe asthmatics were distributed among several clusters supporting the heterogeneity of severe asthma. Finally, a SARP study of children found 4 clusters: 1) later-onset with normal lung function, 2) early-onset atopic with normal lung function, 3) early-onset atopic with mild airflow limitation, and 4) early-onset with advanced airflow limitation [16].

These three studies derived phenotypes by less biased analysis, although the data entered into the analyses varied, as did the approaches. Whereas the SARP adult cluster classification related primarily to lung function, age at onset and level of therapy, the Leicester cluster indicated that an eosinophilic phenotype may be more common in later onset severe asthma. Interestingly, these unbiased phenotypes have substantial overlap with phenotypes previously recognized clinically (late onset eosinophilic and early onset atopic/allergic), supporting the identification of these phenotypes in particular [17, 18].

Natural history and risk factors

Little is understood regarding the prevalence of severe asthma in adults or children, especially when using rigorous definitions as outlined here. However, figures of 5-10% of the total asthma population are often estimated.

It is likely that some of the difficulty in estimating these figures is also due to asthma heterogeneity. This heterogeneity of severe asthma and its phenotypes and lack of long term studies, limit our understanding of the natural history of severe asthma, including whether severe asthma develops early in the course of the disease, or whether it develops over time. There is increasing evidence that severe asthma phenotypes are related to genetic factors, age of asthma onset, disease duration, exacerbations, sinus disease and inflammatory characteristics [14, 16, 17, 19-21]. Early childhood-onset asthma (over a range of severity) is characterized by allergic sensitization, a strong family history and more recently, non-allergy/atopy related genetic factors [14, 17, 22]. Late-onset, often severe asthma is associated with female gender, reduced pulmonary function despite shorter disease duration. In some subgroups, it is associated with persistent eosinophilic inflammation, nasal polyps and sinusitis and often aspirin sensitivity (aspirin-exacerbated respiratory disease) and respiratory tract infections, but less often with specific genetic factors [14, 15, 17, 23, 24]. However, at least some of these apparently late-onset cases may have been symptomatic with abnormal airway physiology early in life, but the relation to severe asthma development is less clear [25].

Occupational exposures have also been associated with late onset, and often severe asthma [26]. Obesity is associated with both childhood and adult onset severe asthma, but the impact of obesity may differ by age at onset and degree of allergic inflammation [27, 28]. Tobacco smoke and environmental air pollution are routinely linked as risk factors for more severe asthma [29, 30]. Both personal smoking and obesity have been linked to CS insensitivity, also associated with severe asthma [31, 32]. Recurrent exacerbations in adult severe asthma are more frequent in patients with co-morbid conditions such as severe sinus disease, gastro-oesophageal reflux, recurrent respiratory infections and obstructive sleep apnoea [33]. Sensitization to fungi such as aspergillus has also been associated with severe asthma development in adults [34, 35]

Genetics and epigenetics

Genetic approaches in complex diseases such as asthma can predict risk for development (susceptibility) or progression (severity). Comprehensive genetic association studies using genome wide association approaches (GWAS) have identified and replicated gene variants important in determining asthma susceptibility which is often based on the loose description of a physician diagnosis of asthma rather than a comprehensive clinical characterization [22, 36]. Other studies have compared more severe asthma with non-asthma controls or smaller cohorts with mild disease and have identified similar genes [37]. Differences in asthma susceptibility genes also appear to differ by age at onset of disease, a characteristic critical to both biased and unbiased phenotyping approaches [22, 38]. Understanding the functional biology of these gene variants may help identify biomarkers in relation to phenotypes and new pharmacotherapies. For example, single nucleotide polymorphisms (SNPs) in the IL4-receptor alpha (*IL4R α*) specifically associate with persistent airways inflammation, severe asthma exacerbations and submucosal mast cells supporting functional alterations in the IL4 pathway influencing allergic inflammation in some severe asthmatics [19]. Another recent paper showed that variation in IL6- receptor (*IL6R*) associated with lower lung function and more severe asthma subphenotypes suggesting another therapeutic target [39]. Finally, there is evidence that genetic variation in a number of genes may interact and influence lung function, asthma susceptibility

and severity [40]. Another mechanism predisposing to more severe or difficult-to-treat asthma may relate to pharmacogenetics, where responsiveness to asthma therapy is altered or reduced in some individuals. Asthmatics with reduced therapeutic responsiveness to controller therapies such as inhaled corticosteroids or even specific novel biologic therapies could exhibit more difficult-to-control asthma and be classified as more severe [41, 42].

Epigenetic changes result from non-coding structural changes to DNA such as DNA methylation or chromatin structural alterations to histones or from the effects of small non-coding RNA, microRNA (miRNA). A role for miRNAs in regulating Th2 function, subsequent allergic airways disease and T-cell production of IL-13 has been proposed from murine studies [43, 44]. Another study reported alterations in specific miRNA in asthmatic CD4 and CD8 T-cells [45], but the relevance for severe asthma remains to be ascertained.

Inflammation and Adaptive Immunity (Figure 2)

Inflammation in severe asthma has been measured by enumerating inflammatory cells in sputum induced from the airways by inhalation of hypertonic saline, as well as through endobronchial biopsies and bronchoalveolar lavage. This inflammation has been categorized into eosinophilic, neutrophilic, and/or paucigranulocytic [14, 18, 46-48]. The concomitant presence of both eosinophils and neutrophils (mixed cellularity) has been reported to be associated with the most severe disease [49]. However, both eosinophil and neutrophil sputum numbers show wide variability in severe asthma with patients demonstrating none to very high levels of either cell, despite being on high doses of CS [49-51]. The neutrophilic and eosinophilic components of sputum can vary substantially on a monthly basis [52]. However, sputum eosinophilia appears more stable, especially in severe asthma, when examined over longer yearly periods in adults [53]. This stability appears to be less in children [54]. The mechanisms behind these diverse inflammatory profiles are likely complex, varied, and related to CS sensitivity [55, 56]. Eosinophilic inflammation, for instance, is likely to have a Th2 immune component, a reflection of adaptive immunity, as evidenced by four separate studies demonstrating efficacy of a monoclonal antibody to IL-5 in eosinophilic severe asthma in adults

[14, 57-59]. Whether the Th2 profile is similar to that observed in CS-naïve patients awaits further study, but would be supported by studies demonstrating efficacy of anti-IL-13 antibody in improving FEV₁ in adult patients with moderate-to-severe asthma [60, 61]. Evidence for a Th2 pattern in severe asthmatic children remains controversial [62, 63]. Inflammation associated with high expression of Th2 cytokines has also been associated with mast cells (MC) [64]. MCs are increased in airway smooth muscle and epithelial compartments in asthma where they have been linked to poor asthma control and airway hyperresponsiveness [65, 66].

The mechanisms for airway neutrophilia are less clear. CSs themselves can contribute to the neutrophilia to some degree and even Th1 factors may play a role [67, 68]. Th17 immunity has been implicated as a cause for neutrophilia, primarily in murine models of asthma, with some supporting data from severe asthma [67, 69-71].

The underlying mechanisms for severe asthma in those patients with no/little inflammation remain poorly understood, but could involve activation of resident cellular elements including smooth muscle cells, fibroblasts and neurons. Importantly, while emphasis has been placed on assessing inflammation by analysis of sputum samples, its relationship to cellular profiles in airway/lung tissues is poor and remains poorly understood [50, 56].

Molecular phenotyping approaches are also emerging with data from severe asthmatic children suggesting Th1 skewing compared to those with moderate asthma, while a recent transcriptome analysis of peripheral blood cells suggested differential activation of CD8⁺ T-cells in severe asthma as compared to CD4⁺ T-cells [43, 63, 72]. Patterns of exhaled volatile organic compounds also differ between asthmatics with fixed airflow limitation and patients with COPD supporting their potential in the phenotyping of severe asthma [73, 74]. Finally, exhaled nitric oxide (FeNO) has been extensively evaluated in mild to moderate asthma and the ATS has recently published specific guidelines for FeNO use in these patients [75]. Cross-sectional studies of severe asthma have indicated some potential usefulness of FeNO as a measure of symptom frequency [76] and as an index of the most obstructed and frequent user of emergency care [77].

Respiratory infections

The role of infections particularly viral infections in asthma exacerbations is well-established and their contribution to asthma development and progression increasingly recognized; however, the relation to asthma severity has rarely been addressed [78-80]. There is an association between Staphylococcal superantigen-specific IgE antibodies and asthma severity and sinusitis, while fixed airflow limitation has been associated with positive serology for intracellular pathogens, such as *Chlamydia pneumoniae* [24, 81, 82]. Emerging data indicate an altered microbiome in asthma as measured by 16sRNA, but the role of bacteria in severe asthma requires further study [83]. Positive *Haemophilus influenzae* and *Pseudomonas aeruginosa* cultures were reported in sputum samples of severe asthmatic patients without evidence of bronchiectasis and from those with a long duration of asthma and exacerbations in the past year [84]. These infection-related factors have only been evaluated in cross-sectional studies with modest regard to asthma characteristics or phenotypes, except for the relationship of Chlamydial infections with lung function in adult-onset asthma [24].

Activation of Innate Immune pathways

There is growing evidence for involvement of innate immune pathways, with certain aspects abnormally diminished while others may be enhanced. Thus, macrophage phagocytosis of apoptotic epithelial cells or of bacteria has been reported to be impaired, which could lead to enhanced inflammation [85, 86]. Toll-like receptor signalling may also be impaired, leading to inadequate Type I and III interferon (IFN) responses which decrease viral clearance [87]. In addition, the antimicrobial activity of airway epithelial cells and their production of β -defensins is reduced when these cells are exposed to T-helper type 2 (Th2) cytokines, while allergic inflammation leads to a reduction in cathelicidin antimicrobial peptide [88, 89]. In contrast, other elements of innate immunity may be enhanced, including increased expression of TSLP, IL-25, and IL-33 in airway cells from patients with severe asthma [71, 90, 91]. Whether these abnormalities are specific to certain phenotypes awaits further study.

Several studies suggest that oxidative and nitrative stress is also increased in severe asthma. Higher FeNO values, perhaps due to the higher reported inducible nitric oxide synthase

expression in severe asthmatic epithelial cells, have been associated with a more exacerbation prone phenotype in severe asthma, as well as more rapid decline in FEV₁ [77, 92-94]. In addition, higher levels of oxidative stress has been associated with a reduction in superoxide dismutase and s-nitrosothiol depletion [95, 96].

The expression of TNF- α has been reported to be increased in severe asthmatic airways, and recent genomic and proteomic approaches have suggested increases in IL-1 β in certain asthmatics, in conjunction with neutrophilia [97-99]. Although a trial using anti-TNF- α antibody in severe asthma provided disappointing results, there were suggestions that certain phenotypes associated with late-onset reversible disease may respond better [100].

Finally, there is increasing interest in factors which contribute to resolution of inflammation. Thus, in severe asthma, it is conceivable that some of the pathobiology is related to a lack of resolution. In this regard, severe asthma has been associated with lower levels of lipoxins, with their potential anti-inflammatory qualities, than patients with milder asthma [101-103].

Structural abnormalities

Resident airway cells such as epithelial, fibroblast and smooth muscle cells, are increasingly recognised as modulators of inflammation and remodelling. Structural alterations can affect airway mechanics, while structural cells can also contribute to inflammatory processes through release of cytokines, chemokines, growth factors and extracellular matrix elements [104]. First, the epithelium in severe asthma is reported to be thicker than in mild-moderate asthma [105], with altered proliferation, apoptosis and release of pro-inflammatory factors [106]. Second, autopsy and biopsy studies have linked an increased amount of airway smooth muscle to asthma severity, airflow obstruction and bronchial hyperresponsiveness [72, 107-110]. Finally, fibrocytes, which can differentiate into myofibroblasts, are increased in blood and in smooth muscle bundles in asthmatics with fixed airways obstruction and/or severe asthma [111, 112].

Subepithelial thickening of the bronchial reticular layer is an early feature of severe asthma in children, and appears to be a characteristic of the eosinophilic phenotype [18, 113, 114]. Patients

with severe asthmatics also have increased expression of TGF- β isoforms and collagen deposition as compared to mild asthmatics, again in association with eosinophilic asthma, with evidence for remodelling in the peripheral airways as well [18, 115]. Indeed, increased production and altered composition of extracellular matrix in the small airways is characteristic of fatal asthma [115].

High resolution computed tomographic studies of airway structure are providing quantitative morphometry of the airways and distal lung in adults with severe asthma, but less is known in children [116-119]. In adults, there are relationships to lung function and more severe exacerbation-prone disease. These structural changes lead to ventilatory defects that can be visualized by magnetic resonance imaging with hyperpolarized helium [120]. Initial studies suggest that neutrophilic inflammation may be linked to air trapping, while biopsy-measured epithelial thickness predicts airway wall thickness obtained from HRCT scans [117, 118].

Physiology

Chronic airflow limitation which is less responsive to bronchodilators and inhaled or oral CS therapy is observed in some severe asthma phenotypes [15, 16, 121]. Chronic airway obstruction may result in airway closure or uneven ventilation of small airways, which associates with severe exacerbations [122]. Severe asthmatics were found to exhibit air trapping (reduced FVC in relation to FEV₁/FVC) when compared with non-severe asthmatics at matched levels of airflow limitation measured by FEV₁/FVC ratio [123]. Bronchodilator use in patients with low baseline FEV₁ resulted in a marked increase in FVC, supporting a role for airway smooth muscle in the air-trapping component of airflow obstruction. Finally, severe airway obstruction is a characteristic in some phenotypes of severe asthma, with studies suggesting that eosinophilic and/or neutrophilic inflammation may contribute to greater airflow limitation [117, 124, 125]. One of the SARP clusters was characterized by severe airway obstruction, with continued β -agonist reversibility, but without reversibility into the normal range, and in association with sputum neutrophilia [15]. Day-to-day variations in lung function are also less variable in severe asthmatics [126]. Such reduced dynamic behaviour of the airways suggests

that an uncontrolled clinical status in severe asthma may imply more fixed and severe obstruction than rapid changes in airway patency.

Prospective studies of lung function decline in severe asthma are limited, but suggest that male gender, smoking, increased FeNO and African ancestry are contributors, while interestingly, allergic status may be protective [94, 127].

Aside from airway calibre, lung elastic recoil is also a determinant of maximal airflow, as well as a force that prevents airway closure. Patients with severe asthma and persistent airflow limitation after bronchodilation can have reduced lung elastic recoil accounting for a portion of their residual airflow limitation [128]. Whether this is related to the reported loss of alveolar attachments in asthma deaths remains to be confirmed [129].

Studies of bronchial hyperresponsiveness in terms of its sensitivity and maximal responses have not yet proven helpful in severe asthma, partly due to difficulties in measuring it in the face of low lung function. However, related information may be gained from the fluctuation patterns of lung function over days [126, 130]. Using new methods derived from physics, fluctuation analysis of lung function measured twice daily over weeks can provide markers for the patient's individual risk of future exacerbations. The impact of these fluctuations in patients with severe asthma is less clear, although the differences in fluctuations compared to mild-moderate asthma suggest these fluctuation patterns may also be a phenotypic characteristic [131].

Conclusion

The evolution of phenotyping of severe asthma over the past decade has been substantial. Given the potential of genetic, molecular, cellular, structural and physiological biomarkers in severe asthma, and their integration using systems medicine approaches, currently-available clinical phenotypes will likely improve substantially. Progress in this field will not only allow better diagnosis and targeted treatment, but also provide focus to the research questions that need to be addressed, as prioritised in Box 2.

3. Evaluation

This section focuses on the evaluation of adults and children with difficult-to-control asthma. It will address: 1) the evaluation required to determine that the patient with “difficult asthma” has asthma, 2) the appropriate assessment of confounding factors and co-morbidities and 3) the initial determination of phenotypes which may be useful in optimizing therapy.

Step 1. Determining that the patient has asthma

Clinicians should maintain a degree of scepticism regarding the diagnosis and establish whether the patient’s history and evaluation truly represent asthma. Misdiagnosis of non-asthmatic conditions as uncontrolled asthma has been reported to be as high as 12-30% [132, 133]. The evaluation should start with a careful history with emphasis on asthma symptoms including dyspnea (and relation to exercise), cough, wheezing, chest tightness and nocturnal awakenings. In addition, information should be obtained on exacerbating triggers, and environmental or occupational factors that may be contributing. Respiratory symptoms related to obesity have also been mistaken for asthma, especially when the patient is seen in an urgent care setting [134]. Children and adults should be evaluated for other conditions that may mimic or be associated with asthma (Table 5). As confirmation of reversible airflow limitation is part of the diagnosis of asthma, spirometry with both inspiratory and expiratory loops, assessed pre- and post-bronchodilator administration should be obtained [135]. Appropriate withholding of medication is required to best assess reversibility. Further testing with complete pulmonary function tests, including diffusing capacity, and bronchoprovocation testing, such as methacholine or exercise challenges, in the case of relatively-preserved lung function can be considered on a case-by-case basis, particularly when there are inconsistencies between history, physical features and spirometry. This should heighten suspicion of an alternative diagnosis (Supplemental Table 1).

It is important to confirm whether children with suspected asthma has variable airflow obstruction, but this is difficult in practice. Children with severe asthma often have normal lung function and no acute response to bronchodilators [136]. Children with a normal FEV₁ both before and after a short acting β -agonist may show a bronchodilator response in terms of FEF₂₅₋₇₅ [137]. However, the utility of FEF₂₅₋₇₅ in the assessment or treatment of severe asthma is currently unknown. Bronchial provocation testing with exercise or methacholine bronchial challenge may be indicated in difficult cases.

Referral to a specialized centre where patients can undergo a systematic evaluation, resulted in 30-50% of patients previously called severe, being classed as difficult-to-control [132, 138, 139]. Many children with asthma will also be found not to have severe, treatment-refractory asthma after a thorough evaluation [140] and approximately 50% of children referred for severe asthma have persistent symptoms and poor control because of inadequate disease management [139].

Question 1: Should chest high-resolution computed tomography (HRCT) scans be routinely ordered in patients with symptoms of severe asthma without known specific indications for performing this test (based on history, symptoms and/or results of other investigations)?

Recommendation 1

In children and adults with severe asthma without specific indications for chest HRCT based on history, symptoms and/or results of prior investigations we suggest that a chest HRCT only be done when the presentation is atypical (conditional recommendation, very low quality evidence).

Values and preferences

This recommendation places a relatively high value on identification of alternative diagnosis and comorbidities and a relatively low value on avoiding potential complications and cost of chest HRCT.

Remarks

An atypical presentation of severe asthma includes such factors as, e.g. excessive mucus production, rapid decline in lung function, reduced carbon monoxide transfer factor coefficient and the absence of atopy in a child with difficult asthma.

Step 2. Assessing Co-morbidities and Contributory Factors (Box 3, Supplemental Table 2)

Difficult-to-control and severe asthma are often associated with co-existing conditions. Non-adherence to treatment should be considered in all difficult-to-control patients, as reports show that non-adherence can be as high as 32-56% [132, 138, 141]. Poor inhaler technique is also common and should be addressed [139]. Detecting poor adherence can be challenging. Measuring serum prednisolone, theophylline, systemic corticosteroid (CS) side effects and suppression of serum cortisol levels can be used to evaluate adherence to oral medications, but methods for measuring inhaled CS compliance, such as canister weight, pressure-actuated or electronic counters, are not widely available in clinical practice. Confirmation that patients have picked up prescriptions from pharmacies can also provide insight [141]. If non-adherence is present, clinicians should empower patients to make informed choices about their medicines and develop individualized interventions to manage non-adherence [141]. Cost alone can have substantial impact on adherence.

Problematic childhood asthma with poor or non-adherence to treatment present specific issues. Adolescents are at risk because of reduced adherence to treatment, and risk taking behaviours (smoking, illicit drug use) are common, leading to a higher risk of fatal episodes of childhood asthma. Poor adherence may also occur because of complicated treatment regimens, family instability, poor supervision of the child, and potentially secondary gains associated with poorly controlled asthma. Assessment in paediatric asthma should include review of rescue inhaler and prescribed controller medications during nurse-led home visits [139]. Providers may need to consider administration of medications in the supervised setting, such as at school.

Atopy and allergy have long been associated with asthma and, to some degree, with severe asthma. However, most large epidemiologic studies are reporting that severe asthma is less associated with atopy/allergy than milder asthma, with a lower proportion of patients with positive skin testing [121, 142]. The association between allergy and asthma severity is stronger in children [136, 143]. In all patients, determining whether there is an association between specific IgE (as measured by skin prick testing or serum testing), on-going exposures and symptoms may help identify factors which contribute to asthma symptoms and exacerbations [144].

Evidence for rhinosinusitis has been reported to be as high as 75-80% [142, 145]. Nasal polyps are seen in a small subset of adults. Nasal polyps are unusual in asthmatic children and more often associated with cystic fibrosis and sometimes primary ciliary dyskinesia.

Gastroesophageal reflux (GERD) is present in 60-80% [15, 23, 121, 142, 145], but clinical trials with anti-reflux therapy generally show little to no effect on asthma control [146-148]. The role of “silent” gastroesophageal reflux disease (GERD) as a cause of poor asthma control in general may be over-emphasized, but the child with gastrointestinal symptoms and problematic asthma should be evaluated and treated for GERD [148]. Although the impact of treatment of sinusitis and GERD on severe asthma is not yet clear, when these co-morbidities are present, they should be treated as appropriate to improve these conditions. Both GERD and rhinosinusitis can worsen vocal cord dysfunction. In addition, symptoms arising from GERD and rhinosinusitis may masquerade as asthma.

Obesity is also a common co-morbidity associated with difficult asthma, although the relationship to asthma may vary by age at onset, with implications for treatment [27, 28].

Concurrent smoking can also contribute to making asthma more difficult-to-control. Smoking appears to alter the inflammatory process which may contribute to their reported lower responses to CS therapy [29, 32]. Environmental tobacco smoke exposure is also associated with adverse asthma outcomes in children and adults [30]. Measurement of urine or salivary cotinine can often reveal evidence of passive smoke exposure [139].

Early-life exposures and sensitization to various allergens, especially to moulds, occur in children with severe asthma [136]. Evidence supporting a therapeutic environmental response to control in severe asthma is inconsistent and inadequately studied, but a decrease in environmental ozone levels following reduction in traffic congestion was associated with improvement in asthma outcomes in an urban environment [149]. Further work on environmental exposures as a contributory factor to severe asthma is needed.

Anxiety and depression are frequently found in adults with severe asthma ranging from 25% to 49% [150]. These are also common in both children and their parents, and maternal depression and poor coping skills may be associated with reduced asthma-related quality of life [151]. Often these conditions are under-diagnosed, so appropriate psychiatric evaluation and referral to a specialist is recommended [152]. Some assessment of family psychosocial stress using standardized questionnaires or direct interviews can be helpful. Unfortunately, the benefit of psychiatric treatment on asthma outcomes has not been well-established [152] and a recent Cochrane meta-analysis evaluating psychological interventions involving various relaxation and behavioural techniques both in adults and children was not able to find firm benefit of those interventions on asthma outcomes [153].

In addition to co-morbidities associated with asthma, in patients with longstanding severe or difficult-to-control asthma, assessment should be made of therapy-induced co-morbidities, especially as they relate to high dose inhaled and systemic CS use (Supplemental Table 3).

Step 3. Approaches to Asthma Phenotyping

Asthma, and severe asthma in particular, are increasingly recognized as heterogeneous processes, not all of which may respond similarly to current therapies or have the same clinical course (see Phenotyping section). Currently, there are no widely-accepted asthma definitions of specific phenotypes. However, identifying certain characteristics of certain phenotypes may eventually promote targeted and/or more effective therapies as well as help to predict different

natural histories which may be of benefit to some patients [14, 15]. In that regard, eosinophilic inflammation, allergic/Th2 processes and obesity have been identified as characteristics or phenotypes which may be helpful when considering nonspecific (CS) and specific (targeted) therapy (eg, anti-IgE, anti-IL5 and anti-IL13 antibody treatments) [14, 28, 45, 59, 60, 154-158]

While no specific phenotypes have been broadly agreed upon, clinical, genetic and statistical approaches have identified an early onset allergic phenotype, a later onset obese (primarily female) phenotype and a later onset eosinophilic phenotype, with different natural histories [14, 15, 17, 22, 27]. The age of asthma onset, i.e. beginning in either childhood or adulthood has been linked to differences in allergy, lung eosinophils and sinus disease. Determining either the level of 1) eosinophilic inflammation or 2) Th2 inflammation (or their absence) has the potential benefit of evaluating level of compliance/adherence, risk for exacerbations, as well as predicting response to CS therapy, and perhaps to targeted therapies such as anti-IL-5 or anti-IL-13, as well [18, 33, 59, 60, 154-156]. The role of sputum neutrophilic inflammation in guiding therapy is generally less studied, with considerable day-to-day variability in patients with severe asthma [52]. It has been associated with reduced response to corticosteroid therapy [154]. While these measurements are available at many specialized centres, further research into their utility as well as standardization of methodology are required before these approaches can be made widely available.

Similarly, an adult-onset obese asthma phenotype may respond better to weight loss strategies than an obese, early onset allergic asthmatic patient[28]. These characteristics may be addressed by asking questions about age at onset (albeit acknowledging the problems of retrospective recall), evaluating body mass index (BMI), measuring lung eosinophils (usually in induced sputum) and assessing levels of atopy, with or without purported biomarkers for Th2 inflammation. These Th2 markers include exhaled nitric oxide (FeNO), which is widely available and serum periostin (currently available only for research and not applicable to children) and even blood eosinophils (Supplemental Table 4 and Therapy Section for further details)[60, 159]. In children, tests for peripheral eosinophilia with a full blood count or specific (skin or blood testing) and total IgE measurements can be helpful but of limited specificity.

FeNO may not be elevated in all children with chronic asthma, but a low level suggests other conditions, such as cystic fibrosis and ciliary dysmotility.

Biomarkers of atopy including elevated FeNO and serum IgE differentiate severe asthma in children but not adults with severe asthma, and support a prevalent Th-2 driven pattern of airway inflammation [136]. However, a bronchoscopic study did not support a defining role for Th-2 cytokines in children with severe asthma [62]. Furthermore, the clinical expression of severe asthma in children is highly variable and distinct severe asthma phenotypes are less well defined in children as they are in adults [16]. Although various inflammatory phenotypes are suggested by sputum analysis in adults, this approach has been less informative in children in which a stable predominant sputum inflammatory phenotype has not yet been identified [160].

Other than blood eosinophils, biomarker measurements require either specialized equipment, training or assays that are not yet readily available, and the utility of any of these biomarkers in identifying clinically meaningful and therapeutically different asthma phenotypes needs to be confirmed (see Therapy section on clinical recommendations).

4. Therapy

This section discusses the management of severe asthma as defined in this document with (i) established therapies (ii) recently-developed therapies and (iii) future approaches that will require phenotypic characterisation. Despite their widespread use and endorsement, the efficacy of some traditional controller medications, including long acting β -agonists, leukotriene modifiers and theophylline has not been well documented in severe asthma. In fact, the nature of the definition itself with the requirement for treatment with a mixed combination of these medications to maintain control or to achieve control implies that these treatments may have less efficacy in this population. Until recently, few clinical trials were specifically designed to investigate treatments in patients with severe asthma, although this is now rapidly changing.

Trials of novel molecular-targeted therapies are now being evaluated mainly in the adult severe asthma population, with some evidence of efficacy and short-term safety data (Table 4).

Using established asthma medications

Corticosteroid insensitivity

As defined in this document, severe asthma involves CS insensitivity, with persistent lack of control despite CS therapy or worsening of asthma control on reduction or discontinuation of CS therapy. Thus, although CSs are the mainstay of treatment for milder forms of asthma, alternative molecular-targeted therapies may be needed in severe asthma to modulate inflammation and improve CS insensitivity. Severe asthmatics are often referred to as CS-dependent, refractory or CS-insensitive asthmatics. In 30% of severe adult asthma patients, OCS are required in addition to ICS to maintain some degree of asthma control [23, 121, 125, 142]. Intramuscular injections of triamcinolone as a maximal dose of CS therapy can improve asthma control, reduce sputum eosinophils and increase FEV₁ [161, 162], supporting the presence of relative insensitivity to this treatment, rather than a complete resistance. In a study of childhood difficult asthma, only 11% of 102 patients were shown to be ‘completely’ CS unresponsive to a single intramuscular injection of triamcinolone, indicating that 89% of the patients had some degree of corticosteroid responsiveness [143]. Thus, the term CS insensitivity is more appropriate than CS resistance.

CS insensitivity is variable and likely has several underlying mechanisms. It can be demonstrated in peripheral blood mononuclear cells and alveolar macrophages, and in resident cells such as airway smooth muscle cells from patients with severe asthma [163-166], but the relation of these in vitro studies to in vivo responses is not well understood. CS insensitivity has been associated with different co-morbid conditions such as obesity [167], smoking [168], low vitamin D levels [169, 170], and non-eosinophilic (low-Th2 inflammation) mainly in adults [171]. In children, less is known about the role of these mechanisms.

While the eosinophilic or 'Th-2 high' asthma phenotype, characterized by high expression of Th2 cytokines, IL-5 and IL-13, identifies inhaled CS responsiveness in patients with milder asthma, eosinophilic inflammation may persist in some severe asthma patients despite high dose ICS, and even systemic CSs [18, 62, 142, 172] [156, 173]. Similar to adults with severe asthma, an eosinophilic-dominated profile has been observed in children, but not in relation to measurable levels of Th2 cytokines in bronchoalveolar lavage fluid or biopsies [62]. In adults, a non-eosinophilic phenotype appears to form a large subgroup of asthma [18, 172, 173], with data from a mild-to-moderate cohort [173], showing relatively poor CS sensitivity. Understanding the mechanisms underlying these different types of CS insensitivity could lead to novel treatments such as p38 mitogen-activated protein kinase (MAPK) inhibitors and histone deacetylase-2 (HDAC-2) recruiters [174, 175].

In the 1990s, several agents with immunosuppressive properties such as methotrexate, cyclosporin A, gold salts and intravenous immunoglobulin G were studied as CS-sparing agents with the aim of reducing the dose of maintenance OCS. Although these agents may be considered to improve CS insensitivity, their efficacy is uncertain, and they are associated with significant side-effects [176-180].

Inhaled and oral CS therapy

The high-dose range for the individual ICSs are shown in Table 2. These are higher than the usual doses required to achieve maximal therapeutic effects in milder asthma. In moderate asthma, there is little response to increasing ICS doses above moderate levels [181]. However, there is individual variation in the dose-therapeutic efficacy of ICS and some evidence that higher ICS doses may be more efficacious in severe asthma (including a systemic CS-sparing effect) [181] [182]. Although even higher doses of ICS (above 2000 mcg/day) and ultra-fine particle ICS are often tried in severe asthma, there are very few data to support this approach.

Exacerbations of asthma in mild to moderate asthma are reported to be effectively treated with high doses of ICS usually by quadrupling the maintenance dose (2,400-4,000 mcg of beclomethasone equivalent). However, this is often not practical in severe asthma since these

patients are already maintained on high doses of ICS [183, 184]. Therefore, when standard medications are inadequate, OCS are often added as maintenance therapy in severe asthma.

Approximately one-third of the current SARP cohort were on regular OCS, with over half needing more than 3 bursts of OCS in the previous year [21, 121, 125, 142]. The optimal timing for initiation of OCS therapy has also not been defined. Similarly, it is not yet clear whether continuous low-dose OCS are better than multiple discontinuous bursts for controlling exacerbations. While guidelines for the use of biomarkers to guide CS use have been proposed, the use of sputum eosinophils and/or exhaled nitric oxide levels for guiding therapy in severe asthma remains controversial [75] (see GRADE question below).

Intramuscular treatment with triamcinolone has been used in severe asthma with reported improvement in eosinophilic inflammation and airflow obstruction, and prevention of exacerbations [161, 162]. The reasons for its efficacy may include enforced adherence or the greater potency of triamcinolone compared to other CS in clinical use.

Systemic CS use has been associated with an increased risk of fracture and cataracts [185, 186], while high doses of ICS are associated with an increased risk of adrenal suppression and growth retardation in children [185, 187-189]. Systemic CS-related weight gain may further impact negatively on asthma control [190]. In prepubertal children, the initial use of 400 µg of budesonide daily led to a small decrease in initial height (mean of -1.3 cm), that was accompanied by a persistent reduction in adult height, although the decrease was neither progressive nor cumulative [191]. Therefore, use of continuous systemic CSs, and perhaps to a lesser degree high dose ICS, should be accompanied by prudent monitoring of weight, blood pressure, blood glucose, eyes and bone density and, in children, appropriate growth. Prophylactic measures to prevent loss of bone density should be taken as per guidelines [192].

ICS are associated with an increased risk of adrenal suppression in children. The dose threshold shows individual variation, and it is not known whether the severity of the underlying asthma impacts on systemic absorption of fluticasone, as it does in adults [193]. Every effort should be made to minimise systemic absorption, for example using large volume spacers for ICS. There are no evidence based guidelines on monitoring adrenal function in children with severe

asthma, but since by definition they will be prescribed high dose ICS, an annual test of adrenal function, such as a cortisol stimulation test, and even an evaluation by a paediatric endocrinologist may be helpful. Such children might benefit from carrying a steroid-warning card, and may need systemic CS at times of stress, for example during intercurrent surgery.

Short- and long-acting β -adrenergic bronchodilators

Many adult and paediatric patients with severe asthma have persistent chronic airflow obstruction despite treatment with ICS and short and/or long-acting bronchodilators [23, 125]. Step-wise increases in the dose of ICS, in combination with a LABA, improves the prospect of control compared with the use of ICS alone, including in some patients with severe asthma. Moreover, some patients who do not achieve optimal control of symptoms show improvement in some features of clinical control reaching a more satisfactory or tolerable state, even though their composite control scores (such as the Asthma Control Questionnaire or Asthma Control Test ACQ-7/ACT) remain at an uncontrolled level [182, 193, 194]. In poorly-controlled pediatric asthma on low-dose ICS, addition of LABAs were the most effective add-on therapy to ICS compared to doubling the dose of ICS or to the addition of montelukast, but there was marked variability in the treatment response highlighting the need to regularly monitor and appropriately adjust each child's asthma therapy [195]. No such study has yet been reported in severe pediatric asthma.

In asthmatics with severe exacerbations of rapid onset (often labelled as 'brittle' asthma), subcutaneous administration of the β -agonist, terbutaline, has been used but its benefit over repeated or continuous inhaled (nebulized or aerosol-administered) β -agonist has not been confirmed [196].

Increased use of β -agonists may paradoxically lead to worsening asthma control as has been described in mild-to-moderate asthma patients treated with SABAs or LABAs without ICS [197-200]. Patients with severe asthma may also be receiving LABAs together with as-needed SABAs. A strong association between the use of inhaled β -agonists and asthma mortality was reported to be confined mainly to the use of β -agonists in excess of the recommended limits [201].

Racial differences in the response to β -agonists have also been reported. Thus, individuals of African racial background appear to have less short-acting bronchodilator responsiveness to SABA even after inhaled corticosteroid therapy compared to Mexican Americans and Puerto Ricans [202]. African-Americans suffering from asthma were reported to have more treatment failures compared with whites, particularly when taking long-acting β -agonists [203]. There are currently on-going studies looking at the influence of race and β -adrenoceptor genotype on treatment responsiveness to β -adrenoreceptors.

Whether the excessive use of β -agonists contributes to worsening control of asthma is uncertain but these patients may be at increased risk of β -agonist toxicity. In clinical practice, doses and treatment duration in both adult and paediatric severe asthma frequently exceed those recommended by expert guidelines, making it difficult to decide on a 'safe' upper dose limit. Case reports suggest 'improvement in asthma control' upon medically-supervised reduction of β -agonists in some severe adult asthma patients taking excessive β -agonists [204]. The generic safety concerns with LABAs apply to children as well as adults, and one should be cautious in increasing above the recommended doses. There are no concerns specific to children with regards to the use of β -agonists. In children with asthma of any degree of severity, there is no evidence that weaning down the dose of LABAs improves asthma control.

The use of ipratropium bromide aerosols for relief of symptoms is commonly used in severe asthma patients in an attempt to reduce their daily use or overuse of β -agonists, particularly in those demonstrating intolerant side-effects of β -agonists such as tremor and palpitations, as well as in the treatment of asthma exacerbations [205, 206]. Although considered to be less effective, they are well tolerated and may be used alternately with β -agonists for as-needed use throughout the day. The routine use of nebulizers is discouraged owing to their relative inefficiency in drug delivery and because their use has been associated with deaths in severe asthma, thought to result from reliance on their use and delays in seeking help during evolving exacerbations [207]. The use of a pressurised metered dose inhaler (pMDI) with a spacer has been shown to be as effective as a nebulizer in both adults and children with worsening asthma or with an exacerbation [208].

Slow-release theophylline

In patients with moderate asthma, theophylline improved asthma control when added to ICS [209]. In an exploratory study of smoking asthmatics with CS insensitivity, theophylline with low dose ICS improved peak expiratory flow rates and asthma control [210], raising the possibility that theophylline could improve CS insensitivity in some people. However, no such studies have been performed in children or adults with severe asthma [211]. Given the safety profile of low dose theophylline, it has been used in children with severe asthma before other treatments.

Leukotriene pathway modifiers

Montelukast is not as effective as LABAs when added to ICS therapy in preventing exacerbations requiring systemic CSs or improving symptoms in moderate asthma [5, 195]. Addition of a leukotriene receptor antagonist or synthesis inhibitor has shown some efficacy on lung function when added to ICS in 3 studies of adults with moderate to severe asthma who were not taking LABAs. Two of these studies were performed in aspirin-sensitive asthma in whom systemic CSs were used in 35% [212-214]. In contrast, in a study of 72 non-phenotyped severe adult asthmatics receiving LABA and ICS, some of whom are also on OCS, the addition of montelukast did not improve clinical outcomes over 14 days [215]. Whether the phenotype of aspirin-sensitive asthma responds better than those without aspirin-sensitive asthma has not been formally addressed. There have been no specific studies of these agents in children with severe asthma.

Long-acting muscarinic antagonists

Tiotropium bromide improved lung function and symptoms in moderate-to-severe asthma patients not controlled on moderate- to high-dose ICSs with or without LABAs [216, 217]. In patients taking high doses of ICSs and LABAs, the addition of tiotropium bromide provided

improvements in FEV₁, reduced as-needed use of short-acting β_2 -adrenergic agonists and modestly reduced the risk of a severe exacerbation [216, 218]. There have been no studies of tiotropium in children with asthma.

Specific approaches directed towards severe asthma

The Committee identified several clinical questions that are important to practicing clinicians in the management of patients with severe asthma. These questions are listed in the Online Appendix. For this initial document the Committee chose to evaluate two questions concerning the phenotypic management of severe asthma and five questions relating to therapeutic approaches in adults and children. The first two management approaches evaluated were the utility use of biomarkers to guide treatment, namely sputum eosinophilia and/or FeNO. The therapeutic options evaluated were the use of anti-IgE therapy, methotrexate as a steroid-sparing agent, the use of macrolide therapy, the role of anti-fungal treatments, and the newer treatment of bronchial thermoplasty.

A: Currently-available biomarkers to guide therapy

Question 2. Should treatment guided by sputum eosinophil count, rather than treatment guided by clinical criteria alone, be used in patients with severe asthma?

Recommendation 2

In adults with severe asthma, we suggest treatment guided by clinical criteria and sputum eosinophil counts performed in centres experienced in using this technique rather than by clinical criteria alone (conditional recommendation, very low quality evidence).

In children with severe asthma, we suggest treatment guided by clinical criteria alone rather than by clinical criteria and sputum eosinophil counts (conditional recommendation, very low quality evidence).

Values and preferences

The recommendation to use sputum eosinophil counts to guide therapy in adults places a higher value on possible clinical benefits from adjusting the treatment in selected patients and on avoidance of inappropriate escalation of treatment and a lower value on increased use of resources.

The recommendation not to use sputum eosinophil counts to guide therapy in children places higher value on avoiding an intervention that is not standardized and not widely available and lower value on the uncertain and possibly limited clinical benefit.

Remarks

Because at the present time, measurement of sputum eosinophils has not yet been sufficiently standardized and is not widely available we suggest such an approach be used only in specialized centres experienced in this technique. Patients who are likely to benefit from this approach are those who can produce sputum, demonstrate persistent or at least intermittent eosinophilia and have severe asthma with frequent exacerbations. Clinicians should recognize that different choices will be appropriate for different patients.

Question 3. Should treatment guided by exhaled nitric oxide (FeNO) in addition to clinical criteria, rather than treatment guided by clinical criteria alone, be used in patients with severe asthma?

Recommendation 3

We suggest that clinicians do not use FeNO to guide therapy in adults or children with severe asthma (conditional recommendation, very low quality evidence).

Values and preferences

This recommendation places a higher value on avoiding additional resource expenditure and a lower value on uncertain benefit from monitoring FeNO.

B: Therapeutic Approaches

Question 4. Should a monoclonal anti-IgE antibody be used in patients with severe allergic asthma?

Recommendation 4

In patients with severe allergic asthma we suggest a therapeutic trial of omalizumab both in adults (conditional recommendation, low quality evidence) and in children (conditional recommendation, very low quality evidence).

Values and preferences

This recommendation places higher value on the clinical benefits from omalizumab in some patients with severe allergic asthma and lower value on increased resource use.

Remarks

Adults and children (aged 6 and above) with severe asthma who are considered for a trial of omalizumab, should have confirmed IgE-dependent allergic asthma uncontrolled despite optimal pharmacological and non-pharmacological management and appropriate allergen avoidance, if their total serum IgE level is 30 to 700 IU/mL (in 3 studies the range was wider – 30 to 1300 IU/mL). Treatment response should be globally assessed by the treating physician taking into consideration any improvement in asthma control, reduction in exacerbations and unscheduled healthcare utilisation, and improvement in quality of life. If a patient does not respond within 4 months of initiating treatment, it is unlikely that further administration of omalizumab will be beneficial.

Question 5. Should methotrexate be used in the treatment of severe asthma?

Recommendation 5

We suggest that clinicians do not use methotrexate in adults or children with severe asthma (conditional recommendation, low quality evidence).

Values and preferences

This recommendation places a relatively higher value on avoiding adverse effects of methotrexate and a relatively lower value on possible benefits from reducing the dose of systemic corticosteroids.

Remarks

Evidence from randomized trials is only available for adults. Because of the probable adverse effects of methotrexate and need for monitoring therapy we suggest that any use of methotrexate is limited to specialized centres and only in patients who require daily OCS. If a decision to use methotrexate is made, a chest x-ray, complete blood count with differential and platelets, liver function tests, serum creatinine and transfer factor to carbon monoxide (DL_{CO}), are recommended prior to and after commencing therapy.

Question 6. Should macrolide antibiotics be used in patients with severe asthma?

Recommendation 6

We suggest that clinicians do not use macrolide antibiotics in adults and children with severe asthma for the treatment of asthma (conditional recommendation, very low quality evidence).

Values and preferences

This recommendation places a relatively higher value on prevention of development of resistance to macrolide antibiotics, and relatively lower value on uncertain clinical benefits.

Remarks

This recommendation applies only to the treatment of asthma; it does not apply to the use of macrolide antibiotics for other indications, e.g. treatment of bronchitis, sinusitis or other bacterial infections as indicated.

Question 7. Should antifungal agents be used in patients with severe asthma?

Recommendation 7

We suggest antifungal agents in adults with severe asthma and recurrent exacerbations of allergic bronchopulmonary aspergillosis (ABPA) (conditional recommendation, very low quality evidence).

We suggest that clinicians do not use antifungal agents for the treatment of asthma in adults and children with severe asthma without ABPA irrespective of sensitization to fungi (i.e. positive skin prick test or fungus-specific IgE in serum) (conditional recommendation, very low quality evidence).

Values and preferences

The recommendation to use antifungal agents in patients with severe asthma and ABPA places a higher value on possible reduction of the risk of exacerbations and improved symptoms, and a lower value on avoiding possible adverse effects, drug interactions and increased use of resources.

The recommendation not to use antifungal agents in patients with severe asthma without confirmed ABPA (irrespective of sensitization) places a higher value on avoiding possible adverse effects, interactions of antifungal agents with other medications and increased use of resources, and a lower value on uncertain possible benefits.

Remarks

The recommendation not to use antifungal agents in patients with severe asthma without confirmed ABPA applies only to the treatment of asthma; it does not apply to the use of antifungal agents for other indications, e.g. treatment of invasive fungal infections. In children, the evidence is limited to isolated case reports. Children should be treated with antifungals only after the most detailed evaluation in a specialist severe asthma referral centre. As antifungal therapies are associated with significant and sometimes severe side-effects, including hepatotoxicity, clinicians should be familiar with these drugs and follow relevant precautions in monitoring for these, observing the limits to the duration of treatment recommended for each.

Question 8. Should bronchial thermoplasty be used in patients with severe asthma?

Recommendation 8

We recommend that bronchial thermoplasty is performed in adults with severe asthma only in the context of an Institutional Review Board-approved independent systematic registry or a clinical study (strong recommendation, very low quality evidence).

Values and preferences

This recommendation places a higher value on avoiding adverse effects and on increased use of resources, and on a lack of understanding of which patients may benefit, and a lower value on the uncertain improvement in symptoms and quality of life.

Remarks

This is a strong recommendation, because of the very low confidence in the currently available estimates of effects of bronchial thermoplasty in patients with severe asthma. Both potential benefits and harms may be large and the long-term consequences of this new approach to asthma therapy utilizing an invasive physical intervention are unknown. Specifically designed studies are needed to define its effects on relevant

objective primary outcomes such as exacerbation rates, and on long-term effects on lung function. Studies are also needed to better understand the phenotypes of responding patients, its effects in patients with severe obstructive asthma ($FEV_1 < 60\%$ of predicted value) or in whom systemic corticosteroids are used, and its long-term benefits and safety. Further research is likely to have an important impact on this recommendation.

New experimental molecular-based treatments for severe asthma

The complexity of chronic severe asthma with different underlying mechanisms (or endotypes) suggests that phenotyping patients with severe asthma and personalized therapy could lead to improved outcomes and fewer side-effects. The introduction of anti-IgE therapy for severe asthma inaugurated the era of specific therapies for certain severe asthma patients, although predicting responder to therapy remains problematic. More recent experimental biologic approaches targeting specific asthmatic inflammatory pathways have reported positive results and are beginning to help define immuno-inflammatory phenotypes/endotypes (Tables 4 & 5).

While the anti-IL5 antibody, mepolizumab, was not beneficial in unselected adult patients with moderate asthma [219], when studied in severe asthma patients with persistent sputum eosinophilia, two anti-IL-5 antibodies, mepolizumab and reslizumab, have been shown to decrease exacerbations, OCS use as well as improve symptoms and lung function to varying degrees [58, 59, 159]. A larger study with mepolizumab showed efficacy in adults and adolescents solely in terms of a reduction in exacerbation rate, without improvement in FEV_1 and quality of life [57].

An antibody to IL-13, lebrikizumab, improved FEV_1 in moderately-severe asthmatic adults, without affecting exacerbations and asthma symptoms [60]. In a post-hoc analysis, this antibody improved prebronchodilator FEV_1 in the group with evidence for Th2 inflammation as measured by elevated serum periostin levels, a proposed surrogate marker of Th2 activity or FeNO [60, 220]. Another anti-IL-13 antibody, tralokinumab, did not improve symptoms but resulted in a non-significant increase in FEV_1 when compared to placebo in all comers. Like

lebrikizumab, it appeared to perform better in patients with detectable sputum IL-13 levels [61]. A study in moderate-to-severe asthma of a monoclonal antibody to the IL-4R α , that blocks both IL-4 and IL-13, was negative [221]. Whether prior biologic phenotyping would have yielded different results is unclear. Similarly, an anti-TNF α antibody, golimumab, was also ineffective in a study performed in adults with uncontrolled severe persistent asthmatic adults [100], but post-hoc analysis suggested an effect in a subgroup. However, further studies are unlikely owing to serious side-effects including an increased prevalence of infections in the treated group.

Two other biologic approaches have been reported in severe asthma, but without any specific phenotyping appropriate to the targets chosen. A tyrosine kinase inhibitor, masitinib, which targets stem cell factor receptor (c-kit) and platelet-derived growth factor improved asthma control in adults when compared to placebo in the face of a reducing dose of oral CS; however, there was no effect on lung function [222]. Daclizumab, a humanised IgG1 monoclonal antibody against the IL-2R α chain of activated lymphocytes improved FEV₁ and asthma control in moderate-to-severe asthmatic adults inadequately controlled on ICS [223]. A CXCR2 antagonist, SCH527123, reduced sputum neutrophilia in severe adult asthma, and was associated with a modest reduction in mild exacerbations, but without an improvement in asthma control [224]. It is unclear whether better efficacy would have been seen with additional phenotyping as the definition of sputum neutrophilia remains unsatisfactory. There is no experience of the use of monoclonal antibody treatments in children, other than omalizumab. Data from adult studies should only be extrapolated to children with great caution.

Conclusion

The treatment of severe asthma both in adults and children still relies heavily on the maximal optimal use of CS and bronchodilators, and other controllers recommended for moderate-to-severe asthma. The addition of the first targeted biologic treatment approved for asthma, a monoclonal anti-IgE antibody, has led to renewed optimism of improvements in outcomes in some patients with allergic severe asthma. There is a potential for other add-on benefits of

additional biologic agents to providing benefit in severe asthma, especially if appropriate responder specific phenotypes of patients can be identified and selected for these highly-specific treatments. This prospect provides the impetus for the search for mechanisms, pathways and biomarkers in severe asthma which are under intense study. It is hoped that the current emerging understanding of the immunopathobiology of severe asthma, of biologic agents and of emerging inflammatory and molecular phenotypes will generate and lead to safe and effective biomarker-driven approaches to severe asthma therapy.

Figure Legends

Figure 1. Integration of factors, beginning with genetics, that may contribute to the ultimate phenotype of the severe asthma patient

Figure 2. Potential immune-inflammatory and cellular interactions contributing to the pathogenesis of phenotypes of asthma. Abbreviations: CXCL8: CXC chemokine ligand 8; CXCL9-11: CXC chemokine ligand 9-11; CCL24/26: CC chemokine ligand 24/26; DUOX 2: Dual oxidase 2; EPO: Eosinophil peroxidase; IFN γ : Interferon γ ; IgE: Immunoglobulin E; IL-4: interleukin 4; IL-5: interleukin 5; IL-13: Interleukin 13; iNOS: inducible nitric oxide synthase; MUC5AC: Mucin 5AC; NO: Nitric oxide; PGD₂: Prostaglandin D₂; TGF β : Transforming growth factor- β ; Th1: T-helper type 1 cell; Th2: T-helper type 2 cell; TSLP: Thymic stromal lymphopoietin.

Box 1. Definition of severe asthma for patients 6 years old and above

Asthma which requires treatment with guidelines suggested medications for GINA Stages 4-6 asthma (high dose inhaled CS* and LABA or leukotriene modifier/theophylline) for the previous year or systemic CS for $\geq 50\%$ of the previous year to prevent it from becoming “uncontrolled” or which remains “uncontrolled” despite this therapy.

- I. *Uncontrolled* asthma defined as at least one of the following:
 1. *Poor symptom control*: ACQ consistently >1.5 , ACT ≤ 19 (or “not well controlled” by NAEPP/GINA guidelines)
 2. *Frequent severe exacerbations*: 2 or more bursts of systemic CSs (>3 days each) in the previous year
 3. *Serious exacerbations*: at least one hospitalization, ICU stay or mechanical ventilation in the previous year
 4. *Airflow limitation*: after appropriate bronchodilator withhold $FEV_1 < 80\%$ predicted (in the face of reduced FEV_1/FVC defined as less than the lower limit of normal)
- II. *Controlled* asthma that worsens on tapering of these high doses of inhaled CS or systemic CS (or additional biologics)

* The definition of High dose ICS is age-specific (See Table 2)

Abbreviations:

ACQ: Asthma Control Questionnaire; ACT: Asthma Control Test; CS: Corticosteroids; GINA: Global Initiative for Asthma; LABA: long-acting β_2 -agonists; NAEPP National Asthma Education and Prevention Program.

Box 2.

Priority questions on phenotypes

1. The validation of the eosinophilic vs non-eosinophilic, and of the Th2 predominant vs non-Th2 asthma phenotype – are they persistent over time and do they predict distinct natural histories?
2. Are risk factors, comorbid factors and natural history also governed by specific immune-inflammatory phenotypes?
3. Are there genetic, epigenetic and inflammatory biomarkers of specific phenotypes or characteristics of severe asthma?
4. Is the innate immune response abnormal in severe asthma, and do these contribute to inflammation and remodelling of the airways?
5. What is the relationship between structural determinants, inflammation and airway function in severe asthma – can imaging be used to non-invasively address these issues?
6. Is there an altered microbiome and virobiome in the airways of severe asthma?

Box 3. Co-Morbidities and Contributory factors

1. Rhinosinusitis/(adults) nasal polyps
2. Psychological factors: Personality trait, symptom perception, anxiety, depression
3. Vocal cord dysfunction
4. Obesity
5. Smoking/smoking related disease
6. Obstructive sleep apnea
7. Hyperventilation syndrome
8. Hormonal influences: Premenstrual, menarche, menopause, thyroid disorders
9. Gastroesophageal reflux disease (symptomatic)
10. Drugs: Aspirin, non-steroidal anti-inflammatory drugs (NSAIDs), β -adrenergic blockers, angiotensin converting enzyme inhibitors (ACE-inhibitors)

Table 1. Interpretation of strong and conditional recommendations.

Implications for:	Strong recommendation	Conditional recommendation
Patients	Most individuals in this situation would want the recommended course of action, and only a small proportion would not.	The majority of individuals in this situation would want the suggested course of action, but many would not.
Clinicians	Most individuals should receive the intervention. Adherence to this recommendation according to the guideline could be used as a quality criterion or performance indicator. Formal decision aids are not likely to be needed to help individuals make decisions consistent with their values and preferences.	Recognize that different choices will be appropriate for individual patients and that you must help each patient arrive at a management decision consistent with his or her values and preferences. Decision aids may be useful in helping individuals to make decisions consistent with their values and preferences.
Policy makers	The recommendation can be adopted as policy in most situations.	Policy making will require substantial debate and involvement of various stakeholders.

Table 2. Definition of high daily dose of various inhaled corticosteroids in relation to patient's age

Inhaled corticosteroid	Threshold daily dose in µg considered as high	
	age 6–12 years	age >12 years
Beclomethasone dipropionate	800 (DPI or CFC MDI) 320 (HFA MDI)	>1000 (DPI or CFC MDI) >500 (HFA MDI)
Budesonide	800 (MDI or DPI)	>800 (MDI or DPI)
Ciclesonide	>160 (HFA MDI)	>320 (HFA MDI)
Fluticasone propionate	500 (HFA MDI or DPI)	>500 (HFA MDI or DPI)
Mometasone furoate	500 (DPI)	>800 (DPI)
Triamcinolone acetonide	1200	>2000

CFC: Chlorofluorocarbon; DPI: Dry powder inhaler; HFA: Hydrofluoroalkanes; MDI: Metered-dose inhaler.

Notes: 1) Designation of low, medium and high doses is provided from manufacturers' recommendations where possible.

2) As CFC preparations are taken from the market, medication inserts for HFA preparations should be carefully reviewed by the clinician for the equivalent correct dosage.

Table 3. Diseases which can masquerade as severe asthma

<i>Children</i>
Dysfunctional breathing / Vocal cord dysfunction (VCD)
Bronchiolitis
Recurrent (micro) aspiration, reflux, swallowing dysfunction
Prematurity and related lung disease
Cystic fibrosis
Congenital or acquired immune deficiency
Primary ciliary dyskinesia
Central airways obstruction / compression
Foreign body
Congenital malformations including vascular ring
Tracheobronchomalacia
Carcinoid or other tumor
Mediastinal mass / Enlarged lymph node
Congenital heart disease
Interstitial lung disease
Connective tissue disease
<i>Adults</i>
Dysfunctional breathlessness/vocal cord dysfunction
Chronic obstructive pulmonary disease
Hyperventilation with panic attacks
Bronchiolitis obliterans
Congestive heart failure
Adverse drug reaction (e.g. angiotensin-converting enzyme inhibitors, ACE-I)
Bronchiectasis / Cystic fibrosis
Hypersensitivity pneumonitis
Hypereosinophilic syndromes
Pulmonary embolus
Herpetic tracheobronchitis
Endobronchial lesion / Foreign body (e.g. amyloid, carcinoid, tracheal stricture)
Allergic Bronchopulmonary Aspergillosis
Acquired tracheobronchomalacia
Churg-Strauss syndrome

TABLE 4: Placebo-controlled studies of new treatments in severe asthma

Author	Severity/n	Design	Treatment	Outcomes	Summary Results
Wenzel et al, 2009 [100]	Severe/309	R, db, pc, p	Golimumab, anti TNF α , 24 w	FEV ₁ , exacerbations AQLQ, PEFR	FEV ₁ unchanged, no reduction in exacerbations, AQLQ, PEFR. Adverse profile side-effects
Pavord et al, 2012 [57]	Severe, with 2 or > exacerbations in past year/621	R,db,pc,p	Mepolizumab (75, 250 or 750 mg infusions at 4 weeks), anti-IL-5, 52w	Rate of exacerbations	All doses reduced exacerbations by 39 to 52%. No effect on ACQ, AQLQ or FEV ₁ .
Haldar et al, 2009 [159]	Severe/61	R, db, pc, p	Mepolizumab, anti-IL5, 50w	Exacerbations Symptoms, FEV ₁ , AQLQ, AHR, sputum and blood eos	Reduced exacerbations Improved AQLQ, reduced eos
Nair et al, 2009 [59]	Severe/20	R,db,pc,p	Mepolizumab, anti-IL5, 50w	Exacerbations, oral steroid reduction	Reduced exacerbations, eosinophils and OCS dose
Kips et al, 2003 [225]	Severe/26	R, db, pc, p	SCH55700, anti-IL-5, 12 w	Sputum and blood eos, symptoms, FEV ₁	Reduced blood sputum eos No other significant outcomes
Castro et al 2011, [58]	Poorly-controlled on high-dose inhaled CS/53	R, db, pc, p	Reslizumab, anti-IL-5, 12 w	ACQ FEV ₁ Sputum eos	Improved ACQ score Reduction in sputum eosinophils Improved FEV ₁
Corren et al, 2010 [221]	Moderate-severe/294	R, db, pc, p	AMG317, anti-IL-4R α antibody, blocks IL-4 and IL-13, 12 weeks	ACQ scores, exacerbations	No effect on ACQ or exacerbations
Corren et al, 2011 [60]	Moderate-severe/219	R, db, pc, p	Lebrikizumab, anti-IL13 antibody, 24 weeks	Change in prebronchodilator FEV ₁	Improved FEV ₁ , compared to placebo, with greatest changes in high levels of periostin or FeNO group (post hoc analyses). No effect on ACQ5 or diary measures. Exacerbations were 60% lower in treated group with high Th2.
Piper et al,	Moderate-to-	R, db, pc,	Tralokinumab	Change from	No change in ACQ-

2012 [61]	severe/194	p	(150, 300, or 600 mg), IL-13 neutralising monoclonal antibody, 3 months	baseline in ACQ-6 at week 13	6 at 13 weeks. FEV ₁ increase of 0.21L versus 0.06L with placebo (p=0.072) □ ₂ -agonist use decrease of -0.68 versus -0.10 with placebo (p=0.020) Better response in those with higher IL-13 levels in sputum
Humbert et al, 2009 [222]	Severe, CS-dependent/44	R, db, pc, p	Masitinib (3, 4.5 and 6 mg/kg/day), c-kit & PDGFR tyrosine kinase inhibitor, 16 w	oral CS dose ACQ, FEV ₁	No difference in OCS dose. ACQ improved, no difference in FEV ₁
Busse et al, 2008[223]	Moderate to severe/115	R, db, pc, p	Daclizumab, IL-2R α chain antibody, 20 weeks	Change in FEV ₁ (%) Asthma exacerbations	Improved FEV ₁ Reduction in day-time asthma scores, use of SABA. Prolonged time to severe exacerbations. Reduction in blood eosinophils.
Nair et al, 2012 [224]	Severe asthma/34	R, db, pc, p	SCH527123, CXCR2 receptor antagonist, 4 weeks	Changes in sputum and neutrophil activation markers	Reduction in blood and sputum neutrophil. Reduction in mild exacerbations. No reduction in ACQ score (p=0.053)

R: Randomised; db: double-blind; pc: placebo-controlled; p: parallel; AQLQ: Asthma quality of life questionnaire; AHR: Airway hyperresponsiveness; ACQ: Asthma Control Questionnaire; ED: Emergency Department; eos: eosinophil; FeNO: level of nitric oxide in exhaled breath; neu: neutrophil; OCS: Oral corticosteroids; SABA: Short-acting β -agonist; yr: year; w: week.

Table 5. Potential phenotype-targeted therapies in severe asthma¹.

Characteristic	Associations	Specifically-targeted treatments
Severe allergic asthma	Blood and sputum eosinophils High serum IgE High FeNO	Anti-IgE (adults & children) Anti-IL4/IL-13 Anti-IL4 Receptor
Eosinophilic asthma	Blood and sputum eosinophils Recurrent exacerbations High FeNO	Anti-IL5, Anti-IL-4/-13 Anti-IL-4Receptor
Neutrophilic asthma ²	Corticosteroid insensitivity Bacterial infections	Anti-IL-8 CXCR2 antagonists Anti-LTB4 (adults and children) Macrolides (adults and children)
Chronic airflow obstruction	Airway wall remodelling as increased airway wall thickness	Anti-IL13 Bronchial thermoplasty
Recurrent exacerbations	Sputum eosinophils in sputum Reduced response to ICS ± OCS	Anti-IL5 Anti-IgE (adults and children)
Corticosteroid insensitivity	Increased neutrophils in sputum ²	p38 MAPK inhibitors Theophylline (adults and children) Macrolides (adults and children)

¹ Unless otherwise stated, these potential treatments apply to adults

² Note: neutrophilic asthma is rare in children

References

1. Proceedings of the ATS workshop on refractory asthma: current understanding, recommendations, and unanswered questions. American Thoracic Society. *Am J Respir Crit Care Med* 2000; 162(6): 2341-2351.
2. Chung KF, Godard P, Adelroth E, Ayres J, Barnes N, Barnes P, Bel E, Burney P, Chanez P, Connett G, Corrigan C, de Blic J, Fabbri L, Holgate ST, Ind P, Joos G, Kerstjens H, Leuenberger P, Lofdahl CG, McKenzie S, Magnussen H, Postma D, Saetta M, Salmeron S, Sterk P. Difficult/therapy-resistant asthma: the need for an integrated approach to define clinical phenotypes, evaluate risk factors, understand pathophysiology and find novel therapies. ERS Task Force on Difficult/Therapy-Resistant Asthma. European Respiratory Society. *Eur Respir J* 1999; 13(5): 1198-1208.
3. Guyatt G, Oxman AD, Akl EA, Kunz R, Vist G, Brozek J, Norris S, Falck-Ytter Y, Glasziou P, DeBeer H, Jaeschke R, Rind D, Meerpohl J, Dahm P, Schunemann HJ. GRADE guidelines: 1. Introduction-GRADE evidence profiles and summary of findings tables. *J Clin Epidemiol* 2011; 64(4): 383-394.
4. Bousquet J, Mantzouranis E, Cruz AA, Ait-Khaled N, Baena-Cagnani CE, Bleecker ER, Brightling CE, Burney P, Bush A, Busse WW, Casale TB, Chan-Yeung M, Chen R, Chowdhury B, Chung KF, Dahl R, Drazen JM, Fabbri LM, Holgate ST, Kauffmann F, Haahtela T, Khaltaev N, Kiley JP, Masjedi MR, Mohammad Y, O'Byrne P, Partridge MR, Rabe KF, Togias A, van Weel C, Wenzel S, Zhong N, Zuberbier T. Uniform definition of asthma severity, control, and exacerbations: document presented for the World Health Organization Consultation on Severe Asthma. *J Allergy Clin Immunol* 2010; 126(5): 926-938.
5. Ducharme FM, Lasserson TJ, Cates CJ. Long-acting beta2-agonists versus anti-leukotrienes as add-on therapy to inhaled corticosteroids for chronic asthma. *Cochrane Database Syst Rev* 2006(4): CD003137.
6. Global Strategy for Asthma Management and Prevention. Global Initiative for Asthma (GINA). Updated 2008. Available from: <http://www.ginasthma.org>.

7. Cox G, Thomson NC, Rubin AS, Niven RM, Corris PA, Siersted HC, Olivenstein R, Pavord ID, McCormack D, Chaudhuri R, Miller JD, Laviolette M. Asthma control during the year after bronchial thermoplasty. *N Engl J Med* 2007; 356(13): 1327-1337.
8. Ni Chroinin M, Lasserson TJ, Greenstone I, Ducharme FM. Addition of long-acting beta-agonists to inhaled corticosteroids for chronic asthma in children. *Cochrane Database Syst Rev* 2009(3): CD007949.
9. Bel EH, Sousa A, Fleming L, Bush A, Chung KF, Versnel J, Wagener AH, Wagers SS, Sterk PJ, Compton CH. Diagnosis and definition of severe refractory asthma: an international consensus statement from the Innovative Medicine Initiative (IMI). *Thorax* 2010.
10. Brown RH, Wizeman W, Danek C, Mitzner W. In vivo evaluation of the effectiveness of bronchial thermoplasty with computed tomography. *J Appl Physiol* 2005; 98(5): 1603-1606.
11. Lotvall J, Akdis CA, Bacharier LB, Bjerner L, Casale TB, Custovic A, Lemanske RF, Jr., Wardlaw AJ, Wenzel SE, Greenberger PA. Asthma endotypes: a new approach to classification of disease entities within the asthma syndrome. *J Allergy Clin Immunol* 2011; 127(2): 355-360.
12. Auffray C, Adcock IM, Chung KF, Djukanovic R, Pison C, Sterk PJ. An integrative systems biology approach to understanding pulmonary diseases. *Chest* 2010; 137(6): 1410-1416.
13. Frey U, Suki B. Complexity of chronic asthma and chronic obstructive pulmonary disease: implications for risk assessment, and disease progression and control. *Lancet* 2008; 372(9643): 1088-1099.
14. Haldar P, Pavord ID, Shaw DE, Berry MA, Thomas M, Brightling CE, Wardlaw AJ, Green RH. Cluster analysis and clinical asthma phenotypes. *Am J Respir Crit Care Med* 2008; 178(3): 218-224.
15. Moore WC, Meyers DA, Wenzel SE, Teague WG, Li H, Li X, D'Agostino R, Jr., Castro M, Curran-Everett D, Fitzpatrick AM, Gaston B, Jarjour NN, Sorkness R, Calhoun WJ, Chung KF, Comhair SA, Dweik RA, Israel E, Peters SP, Busse WW, Erzurum SC, Bleecker ER. Identification of asthma phenotypes using cluster analysis in the Severe Asthma Research Program. *Am J Respir Crit Care Med* 2010; 181(4): 315-323.
16. Fitzpatrick AM, Teague WG, Meyers DA, Peters SP, Li X, Li H, Wenzel SE, Aujla S, Castro M, Bacharier LB, Gaston BM, Bleecker ER, Moore WC. Heterogeneity of severe asthma in

childhood: confirmation by cluster analysis of children in the National Institutes of Health/National Heart, Lung, and Blood Institute Severe Asthma Research Program. *J Allergy Clin Immunol* 2011; 127(2): 382-389 e381-313.

17. Miranda C, Busacker A, Balzar S, Trudeau J, Wenzel SE. Distinguishing severe asthma phenotypes: role of age at onset and eosinophilic inflammation. *J Allergy Clin Immunol* 2004; 113(1): 101-108.

18. Wenzel SE, Schwartz LB, Langmack EL, Halliday JL, Trudeau JB, Gibbs RL, Chu HW. Evidence that severe asthma can be divided pathologically into two inflammatory subtypes with distinct physiologic and clinical characteristics. *Am J Respir Crit Care Med* 1999; 160(3): 1001-1008.

19. Wenzel SE, Balzar S, Ampleford E, Hawkins GA, Busse WW, Calhoun WJ, Castro M, Chung KF, Erzurum S, Gaston B, Israel E, Teague WG, Curran-Everett D, Meyers DA, Bleecker ER. IL4R alpha mutations are associated with asthma exacerbations and mast cell/IgE expression. *Am J Respir Crit Care Med* 2007; 175(6): 570-576.

20. Li X, Howard TD, Zheng SL, Haselkorn T, Peters SP, Meyers DA, Bleecker ER. Genome-wide association study of asthma identifies RAD50-IL13 and HLA-DR/DQ regions. *J Allergy Clin Immunol* 2010; 125(2): 328-335 e311.

21. Haselkorn T, Zeiger RS, Chipps BE, Mink DR, Szefer SJ, Simons FE, Massanari M, Fish JE. Recent asthma exacerbations predict future exacerbations in children with severe or difficult-to-treat asthma. *J Allergy Clin Immunol* 2009; 124(5): 921-927.

22. Moffatt MF, Gut IG, Demenais F, Strachan DP, Bouzigon E, Heath S, von Mutius E, Farrall M, Lathrop M, Cookson WO. A large-scale, consortium-based genomewide association study of asthma. *N Engl J Med* 2010; 363(13): 1211-1221.

23. ten Brinke A, Zwinderman AH, Sterk PJ, Rabe KF, Bel EH. Factors associated with persistent airflow limitation in severe asthma. *Am J Respir Crit Care Med* 2001; 164(5): 744-748.

24. ten Brinke A, van Dissel JT, Sterk PJ, Zwinderman AH, Rabe KF, Bel EH. Persistent airflow limitation in adult-onset nonatopic asthma is associated with serologic evidence of *Chlamydia pneumoniae* infection. *J Allergy Clin Immunol* 2001; 107(3): 449-454.

25. Stern DA, Morgan WJ, Halonen M, Wright AL, Martinez FD. Wheezing and bronchial hyper-responsiveness in early childhood as predictors of newly diagnosed asthma in early adulthood: a longitudinal birth-cohort study. *Lancet* 2008; 372(9643): 1058-1064.
26. Henneberger PK, Mirabelli MC, Kogevinas M, Anto JM, Plana E, Dahlman-Hoglund A, Jarvis DL, Kromhout H, Lillienberg L, Norback D, Olivieri M, Radon K, Toren K, Urrutia I, Villani S, Zock JP. The occupational contribution to severe exacerbation of asthma. *Eur Respir J* 2010; 36(4): 743-750.
27. Holguin F, Bleecker ER, Busse WW, Calhoun WJ, Castro M, Erzurum SC, Fitzpatrick AM, Gaston B, Israel E, Jarjour NN, Moore WC, Peters SP, Yonas M, Teague WG, Wenzel SE. Obesity and asthma: An association modified by age of asthma onset. *J Allergy Clin Immunol* 2011; 127(6): 1486-1493 e1482.
28. Dixon AE, Pratley RE, Forgione PM, Kaminsky DA, Whittaker-Leclair LA, Griffes LA, Garudathri J, Raymond D, Poynter ME, Bunn JY, Irvin CG. Effects of obesity and bariatric surgery on airway hyperresponsiveness, asthma control, and inflammation. *J Allergy Clin Immunol* 2011; 128(3): 508-515 e502.
29. Chaudhuri R, Livingston E, McMahon AD, Lafferty J, Fraser I, Spears M, McSharry CP, Thomson NC. Effects of smoking cessation on lung function and airway inflammation in smokers with asthma. *Am J Respir Crit Care Med* 2006; 174(2): 127-133.
30. Comhair SA, Gaston BM, Ricci KS, Hammel J, Dweik RA, Teague WG, Meyers D, Ampleford EJ, Bleecker ER, Busse WW, Calhoun WJ, Castro M, Chung KF, Curran-Everett D, Israel E, Jarjour WN, Moore W, Peters SP, Wenzel S, Hazen SL, Erzurum SC. Detrimental effects of environmental tobacco smoke in relation to asthma severity. *PLoS One* 2011; 6(5): e18574.
31. Peters-Golden M, Swern A, Bird SS, Hustad CM, Grant E, Edelman JM. Influence of body mass index on the response to asthma controller agents. *Eur Respir J* 2006; 27(3): 495-503.
32. Lazarus SC, Chinchilli VM, Rollings NJ, Boushey HA, Cherniack R, Craig TJ, Deykin A, DiMango E, Fish JE, Ford JG, Israel E, Kiley J, Kraft M, Lemanske RF, Jr., Leone FT, Martin RJ, Pesola GR, Peters SP, Sorkness CA, Szeffler SJ, Wechsler ME, Fahy JV. Smoking affects response to inhaled corticosteroids or leukotriene receptor antagonists in asthma. *Am J Respir Crit Care Med* 2007; 175(8): 783-790.

33. ten Brinke A, Sterk PJ, Masclee AA, Spinhoven P, Schmidt JT, Zwinderman AH, Rabe KF, Bel EH. Risk factors of frequent exacerbations in difficult-to-treat asthma. *Eur Respir J* 2005; 26(5): 812-818.
34. Knutsen AP, Bush RK, Demain JG, Denning DW, Dixit A, Fairs A, Greenberger PA, Kariuki B, Kita H, Kurup VP, Moss RB, Niven RM, Pashley CH, Slavin RG, Vijay HM, Wardlaw AJ. Fungi and allergic lower respiratory tract diseases. *J Allergy Clin Immunol* 2012; 129(2): 280-291; quiz 292-283.
35. Vicencio AG, Muzumdar H, Tsirilakis K, Kessel A, Nandalike K, Goldman DL. Severe asthma with fungal sensitization in a child: response to itraconazole therapy. *Pediatrics* 2010; 125(5): e1255-1258.
36. Torgerson DG, Ampleford EJ, Chiu GY, Gauderman WJ, Gignoux CR, Graves PE, Himes BE, Levin AM, Mathias RA, Hancock DB, Baurley JW, Eng C, Stern DA, Celedon JC, Rafaels N, Capurso D, Conti DV, Roth LA, Soto-Quiros M, Togias A, Li X, Myers RA, Romieu I, Van Den Berg DJ, Hu D, Hansel NN, Hernandez RD, Israel E, Salam MT, Galanter J, Avila PC, Avila L, Rodriguez-Santana JR, Chapela R, Rodriguez-Cintron W, Diette GB, Adkinson NF, Abel RA, Ross KD, Shi M, Faruque MU, Dunston GM, Watson HR, Mantese VJ, Ezurum SC, Liang L, Ruczinski I, Ford JG, Huntsman S, Chung KF, Vora H, Calhoun WJ, Castro M, Sienra-Monge JJ, del Rio-Navarro B, Deichmann KA, Heinzmann A, Wenzel SE, Busse WW, Gern JE, Lemanske RF, Jr., Beaty TH, Bleecker ER, Raby BA, Meyers DA, London SJ, Gilliland FD, Burchard EG, Martinez FD, Weiss ST, Williams LK, Barnes KC, Ober C, Nicolae DL. Meta-analysis of genome-wide association studies of asthma in ethnically diverse North American populations. *Nat Genet* 2011; 43(9): 887-892.
37. Verini M, Consilvio NP, Di Pillo S, Cingolani A, Spagnuolo C, Rapino D, Scaparrotta A, Chiarelli F. FeNO as a Marker of Airways Inflammation: The Possible Implications in Childhood Asthma Management. *J Allergy (Cairo)* 2010; 2010.
38. Forno E, Lasky-Su J, Himes B, Howrylak J, Ramsey C, Brehm J, Klanderman B, Ziniti J, Melen E, Pershagen G, Wickman M, Martinez F, Mauger D, Sorkness C, Tantisira K, Raby BA, Weiss ST, Celedon JC. Genome-wide association study of the age of onset of childhood asthma. *J Allergy Clin Immunol* 2012; 130(1): 83-90 e84.

39. Hawkins GA, Robinson MB, Hastie AT, Li X, Li H, Moore WC, Howard TD, Busse WW, Erzurum SC, Wenzel SE, Peters SP, Meyers DA, Bleecker ER. The IL6R variation Asp(358)Ala is a potential modifier of lung function in subjects with asthma. *J Allergy Clin Immunol* 2012; 130(2): 510-515 e511.
40. Li X, Howard TD, Moore WC, Ampleford EJ, Li H, Busse WW, Calhoun WJ, Castro M, Chung KF, Erzurum SC, Fitzpatrick AM, Gaston B, Israel E, Jarjour NN, Teague WG, Wenzel SE, Peters SP, Hawkins GA, Bleecker ER, Meyers DA. Importance of hedgehog interacting protein and other lung function genes in asthma. *J Allergy Clin Immunol* 2011; 127(6): 1457-1465.
41. Tantisira KG, Lasky-Su J, Harada M, Murphy A, Litonjua AA, Himes BE, Lange C, Lazarus R, Sylvia J, Klanderman B, Duan QL, Qiu W, Hirota T, Martinez FD, Mauger D, Sorkness C, Szeffler S, Lazarus SC, Lemanske RF, Jr., Peters SP, Lima JJ, Nakamura Y, Tamari M, Weiss ST. Genomewide association between GLCCI1 and response to glucocorticoid therapy in asthma. *N Engl J Med* 2011; 365(13): 1173-1183.
42. Slager RE, Otulana BA, Hawkins GA, Yen YP, Peters SP, Wenzel SE, Meyers DA, Bleecker ER. IL-4 receptor polymorphisms predict reduction in asthma exacerbations during response to an anti-IL-4 receptor alpha antagonist. *J Allergy Clin Immunol* 2012; 130(2): 516-522 e514.
43. Mattes J, Collison A, Plank M, Phipps S, Foster PS. Antagonism of microRNA-126 suppresses the effector function of TH2 cells and the development of allergic airways disease. *Proc Natl Acad Sci U S A* 2009; 106(44): 18704-18709.
44. Collison A, Mattes J, Plank M, Foster PS. Inhibition of house dust mite-induced allergic airways disease by antagonism of microRNA-145 is comparable to glucocorticoid treatment. *J Allergy Clin Immunol* 2011; 128(1): 160-167 e164.
45. Tsitsiou E, Williams AE, Moschos SA, Patel K, Rossios C, Jiang X, Adams OD, Macedo P, Booton R, Gibeon D, Chung KF, Lindsay MA. Transcriptome analysis shows activation of circulating CD8+ T cells in patients with severe asthma. *J Allergy Clin Immunol* 2012; 129(1): 95-103.
46. Simpson JL, Scott RJ, Boyle MJ, Gibson PG. Differential proteolytic enzyme activity in eosinophilic and neutrophilic asthma. *Am J Respir Crit Care Med* 2005; 172(5): 559-565.

47. Simpson JL, Scott R, Boyle MJ, Gibson PG. Inflammatory subtypes in asthma: assessment and identification using induced sputum. *Respirology* 2006; 11(1): 54-61.
48. Lex C, Ferreira F, Zacharasiewicz A, Nicholson AG, Haslam PL, Wilson NM, Hansel TT, Payne DN, Bush A. Airway eosinophilia in children with severe asthma: predictive values of noninvasive tests. *Am J Respir Crit Care Med* 2006; 174(12): 1286-1291.
49. Hastie AT, Moore WC, Meyers DA, Vestal PL, Li H, Peters SP, Bleecker ER. Analyses of asthma severity phenotypes and inflammatory proteins in subjects stratified by sputum granulocytes. *J Allergy Clin Immunol* 2010; 125(5): 1028-1036 e1013.
50. Jatakanon A, Lalloo UG, Lim S, Chung KF, Barnes PJ. Increased neutrophils and cytokines, TNF-alpha and IL-8, in induced sputum of non-asthmatic patients with chronic dry cough. *Thorax* 1999; 54(3): 234-237.
51. Louis R, Lau LC, Bron AO, Roldaan AC, Radermecker M, Djukanovic R. The relationship between airways inflammation and asthma severity. *Am J Respir Crit Care Med* 2000; 161(1): 9-16.
52. Al-Samri MT, Benedetti A, Prefontaine D, Olivenstein R, Lemiere C, Nair P, Martin JG, Hamid Q. Variability of sputum inflammatory cells in asthmatic patients receiving corticosteroid therapy: A prospective study using multiple samples. *J Allergy Clin Immunol* 2010; 125(5): 1161-1163 e1164.
53. van Veen IH, Ten Brinke A, Gauw SA, Sterk PJ, Rabe KF, Bel EH. Consistency of sputum eosinophilia in difficult-to-treat asthma: a 5-year follow-up study. *J Allergy Clin Immunol* 2009; 124(3): 615-617, 617 e611-612.
54. Fleming L, Tsartsali L, Wilson N, Regamey N, Bush A. Sputum inflammatory phenotypes are not stable in children with asthma. *Thorax* 2012; 67(8): 675-681.
55. Chakir J, Hamid Q, Bosse M, Boulet LP, Laviolette M. Bronchial inflammation in corticosteroid-sensitive and corticosteroid-resistant asthma at baseline and on oral corticosteroid treatment. *Clin Exp Allergy* 2002; 32(4): 578-582.
56. Lemiere C, Ernst P, Olivenstein R, Yamauchi Y, Govindaraju K, Ludwig MS, Martin JG, Hamid Q. Airway inflammation assessed by invasive and noninvasive means in severe asthma: eosinophilic and noneosinophilic phenotypes. *J Allergy Clin Immunol* 2006; 118(5): 1033-1039.

57. Pavord ID, Korn S, Howarth P, Bleecker ER, Buhl R, Keene ON, Ortega H, Chanez P. Mepolizumab for severe eosinophilic asthma (DREAM): a multicentre, double-blind, placebo-controlled trial. *Lancet* 2012; 380(9842): 651-659.
58. Castro M, Mathur S, Hargreave F, Boulet LP, Xie F, Young J, Wilkins HJ, Henkel T, Nair P. Reslizumab for poorly controlled, eosinophilic asthma: a randomized, placebo-controlled study. *Am J Respir Crit Care Med* 2011; 184(10): 1125-1132.
59. Nair P, Pizzichini MM, Kjarsgaard M, Inman MD, Efthimiadis A, Pizzichini E, Hargreave FE, O'Byrne PM. Mepolizumab for prednisone-dependent asthma with sputum eosinophilia. *N Engl J Med* 2009; 360(10): 985-993.
60. Corren J, Lemanske RF, Hanania NA, Korenblat PE, Parsey MV, Arron JR, Harris JM, Scheerens H, Wu LC, Su Z, Mosesova S, Eisner MD, Bohen SP, Matthews JG. Lebrikizumab Treatment in Adults with Asthma. *N Engl J Med* 2011; 365(12): 1088-1098.
61. Piper E, Brightling C, Niven R, Oh C, Faggioni R, Poon K, She D, Kell C, May RD, Geba GP, Molfino NA. A phase 2 placebo-controlled study of tralokinumab in moderate-to-severe asthma. *Eur Respir J* 2013; 41(2): 330-338.
62. Bossley CJ, Fleming L, Gupta A, Regamey N, Frith J, Oates T, Tsartsali L, Lloyd CM, Bush A, Saglani S. Pediatric severe asthma is characterized by eosinophilia and remodeling without T(H)2 cytokines. *J Allergy Clin Immunol* 2012; 129(4): 974-982 e913.
63. Fitzpatrick AM, Higgins M, Holguin F, Brown LA, Teague WG. The molecular phenotype of severe asthma in children. *J Allergy Clin Immunol* 2010; 125(4): 851-857 e818.
64. Dougherty RH, Sidhu SS, Raman K, Solon M, Solberg OD, Caughey GH, Woodruff PG, Fahy JV. Accumulation of intraepithelial mast cells with a unique protease phenotype in T(H)2-high asthma. *J Allergy Clin Immunol* 2010; 125(5): 1046-1053 e1048.
65. Brightling CE, Bradding P, Symon FA, Holgate ST, Wardlaw AJ, Pavord ID. Mast-cell infiltration of airway smooth muscle in asthma. *N Engl J Med* 2002; 346(22): 1699-1705.
66. Balzar S, Fajt ML, Comhair SA, Erzurum SC, Bleecker E, Busse WW, Castro M, Gaston B, Israel E, Schwartz LB, Curran-Everett D, Moore CG, Wenzel SE. Mast cell phenotype, location, and activation in severe asthma. Data from the Severe Asthma Research Program. *Am J Respir Crit Care Med* 2011; 183(3): 299-309.

67. Shannon J, Ernst P, Yamauchi Y, Olivenstein R, Lemiére C, Foley S, Cicora L, Ludwig M, Hamid Q, Martin JG. Differences in airway cytokine profile in severe asthma compared to moderate asthma. *Chest* 2008; 133(2): 420-426.
68. Nguyen LT, Lim S, Oates T, Chung KF. Increase in airway neutrophils after oral but not inhaled corticosteroid therapy in mild asthma. *Respir Med* 2005; 99(2): 200-207.
69. McKinley L, Alcorn JF, Peterson A, Dupont RB, Kapadia S, Logar A, Henry A, Irvin CG, Piganelli JD, Ray A, Kolls JK. TH17 cells mediate steroid-resistant airway inflammation and airway hyperresponsiveness in mice. *J Immunol* 2008; 181(6): 4089-4097.
70. Lajoie S, Lewkowich IP, Suzuki Y, Clark JR, Sproles AA, Dienger K, Budelsky AL, Wills-Karp M. Complement-mediated regulation of the IL-17A axis is a central genetic determinant of the severity of experimental allergic asthma. *Nat Immunol* 2010; 11(10): 928-935.
71. Al-Ramli W, Prefontaine D, Chouiali F, Martin JG, Olivenstein R, Lemiére C, Hamid Q. T(H)17-associated cytokines (IL-17A and IL-17F) in severe asthma. *J Allergy Clin Immunol* 2009; 123(5): 1185-1187.
72. Macedo P, Hew M, Torrego A, Jouneau S, Oates T, Durham A, Chung KF. Inflammatory biomarkers in airways of patients with severe asthma compared with non-severe asthma. *Clin Exp Allergy* 2009; 39(11): 1668-1676.
73. Fens N, Roldaan AC, van der Schee MP, Boksem RJ, Zwinderman AH, Bel EH, Sterk PJ. External validation of exhaled breath profiling using an electronic nose in the discrimination of asthma with fixed airways obstruction and chronic obstructive pulmonary disease. *Clin Exp Allergy* 2011; 41(10): 1371-1378.
74. Fens N, de Nijs SB, Peters S, Dekker T, Knobel HH, Vink TJ, Willard NP, Zwinderman AH, Krouwels FH, Janssen HG, Lutter R, Sterk PJ. Exhaled air molecular profiling in relation to inflammatory subtype and activity in COPD. *Eur Respir J* 2011; 38(6): 1301-1309.
75. Dweik RA, Boggs PB, Erzurum SC, Irvin CG, Leigh MW, Lundberg JO, Olin AC, Plummer AL, Taylor DR. An Official ATS Clinical Practice Guideline: Interpretation of Exhaled Nitric Oxide Levels (FENO) for Clinical Applications. *Am J Respir Crit Care Med* 2011; 184(5): 602-615.

76. Stirling RG, Kharitonov SA, Campbell D, Robinson DS, Durham SR, Chung KF, Barnes PJ. Increase in exhaled nitric oxide levels in patients with difficult asthma and correlation with symptoms and disease severity despite treatment with oral and inhaled corticosteroids. *Asthma and Allergy Group. Thorax* 1998; 53(12): 1030-1034.
77. Dweik RA, Sorkness RL, Wenzel S, Hammel J, Curran-Everett D, Comhair SA, Bleecker E, Busse W, Calhoun WJ, Castro M, Chung KF, Israel E, Jarjour N, Moore W, Peters S, Teague G, Gaston B, Erzurum SC. Use of exhaled nitric oxide measurement to identify a reactive, at-risk phenotype among patients with asthma. *Am J Respir Crit Care Med* 2010; 181(10): 1033-1041.
78. Jackson DJ, Gangnon RE, Evans MD, Roberg KA, Anderson EL, Pappas TE, Printz MC, Lee WM, Shult PA, Reisdorf E, Carlson-Dakes KT, Salazar LP, DaSilva DF, Tisler CJ, Gern JE, Lemanske RF, Jr. Wheezing rhinovirus illnesses in early life predict asthma development in high-risk children. *Am J Respir Crit Care Med* 2008; 178(7): 667-672.
79. Wos M, Sanak M, Soja J, Olechnowicz H, Busse WW, Szczeklik A. The presence of rhinovirus in lower airways of patients with bronchial asthma. *Am J Respir Crit Care Med* 2008; 177(10): 1082-1089.
80. Turchiarelli V, Schinkel J, Molenkamp R, Foschino Barbaro MP, Carpagnano GE, Spanevello A, Lutter R, Bel EH, Sterk PJ. Repeated virus identification in the airways of patients with mild and severe asthma during prospective follow-up. *Allergy* 2011; 66(8): 1099-1106.
81. Kowalski ML, Cieslak M, Perez-Novo CA, Makowska JS, Bachert C. Clinical and immunological determinants of severe/refractory asthma (SRA): association with Staphylococcal superantigen-specific IgE antibodies. *Allergy* 2011; 66(1): 32-38.
82. Pasternack R, Huhtala H, Karjalainen J. Chlamydophila (Chlamydia) pneumoniae serology and asthma in adults: a longitudinal analysis. *J Allergy Clin Immunol* 2005; 116(5): 1123-1128.
83. Hilty M, Burke C, Pedro H, Cardenas P, Bush A, Bossley C, Davies J, Ervine A, Poulter L, Pachter L, Moffatt MF, Cookson WO. Disordered microbial communities in asthmatic airways. *PLoS One* 2010; 5(1): e8578.

84. Zhang Q, Illing R, Hui C, Downey K, Carr D, Stearn M, Alshafi K, Menzies-Gow A, Zhong N, Chung KF. Bacteria in sputum of stable severe asthma and increased airway wall thickness. *Respir Res* 2012; 13(1): 35.
85. Huynh ML, Malcolm KC, Kotaru C, Tilstra JA, Westcott JY, Fadok VA, Wenzel SE. Defective apoptotic cell phagocytosis attenuates prostaglandin E2 and 15-hydroxyeicosatetraenoic acid in severe asthma alveolar macrophages. *Am J Respir Crit Care Med* 2005; 172(8): 972-979.
86. Fitzpatrick AM, Holguin F, Teague WG, Brown LA. Alveolar macrophage phagocytosis is impaired in children with poorly controlled asthma. *J Allergy Clin Immunol* 2008; 121(6): 1372-1378, 1378 e1371-1373.
87. Wark PA, Johnston SL, Bucchieri F, Powell R, Puddicombe S, Laza-Stanca V, Holgate ST, Davies DE. Asthmatic bronchial epithelial cells have a deficient innate immune response to infection with rhinovirus. *J Exp Med* 2005; 201(6): 937-947.
88. Chu HW, Thaikoottathil J, Rino JG, Zhang G, Wu Q, Moss T, Refaeli Y, Bowler R, Wenzel SE, Chen Z, Zdunek J, Breed R, Young R, Allaire E, Martin RJ. Function and regulation of SPLUNC1 protein in Mycoplasma infection and allergic inflammation. *J Immunol* 2007; 179(6): 3995-4002.
89. Beisswenger C, Kandler K, Hess C, Garn H, Felgentreff K, Wegmann M, Renz H, Vogelmeier C, Bals R. Allergic airway inflammation inhibits pulmonary antibacterial host defense. *J Immunol* 2006; 177(3): 1833-1837.
90. Doe C, Bafadhel M, Siddiqui S, Desai D, Mistry V, Rugman P, McCormick M, Woods J, May R, Sleeman MA, Anderson IK, Brightling CE. Expression of the T helper 17-associated cytokines IL-17A and IL-17F in asthma and COPD. *Chest* 2010; 138(5): 1140-1147.
91. Shikotra A, Choy DF, Ohri CM, Doran E, Butler C, Hargadon B, Shelley M, Abbas AR, Austin CD, Jackman J, Wu LC, Heaney LG, Arron JR, Bradding P. Increased expression of immunoreactive thymic stromal lymphopoietin in patients with severe asthma. *J Allergy Clin Immunol* 2012; 129(1): 104-111 e101-109.

92. Yamamoto M, Tochino Y, Chibana K, Trudeau JB, Holguin F, Wenzel SE. Nitric oxide and related enzymes in asthma: relation to severity, enzyme function and inflammation. *Clin Exp Allergy* 2011; 42(5): 760-768.
93. Stern G, de Jongste J, van der Valk R, Baraldi E, Carraro S, Thamrin C, Frey U. Fluctuation phenotyping based on daily fraction of exhaled nitric oxide values in asthmatic children. *J Allergy Clin Immunol* 2011; 128(2): 293-300.
94. van Veen IH, Ten Brinke A, Sterk PJ, Sont JK, Gauw SA, Rabe KF, Bel EH. Exhaled nitric oxide predicts lung function decline in difficult-to-treat asthma. *Eur Respir J* 2008; 32(2): 344-349.
95. Greenwald R, Fitzpatrick AM, Gaston B, Marozkina NV, Erzurum S, Teague WG. Breath formate is a marker of airway S-nitrosothiol depletion in severe asthma. *PLoS One* 2010; 5(7): e11919.
96. Comhair SA, Ricci KS, Arroliga M, Lara AR, Dweik RA, Song W, Hazen SL, Bleecker ER, Busse WW, Chung KF, Gaston B, Hastie A, Hew M, Jarjour N, Moore W, Peters S, Teague WG, Wenzel SE, Erzurum SC. Correlation of systemic superoxide dismutase deficiency to airflow obstruction in asthma. *Am J Respir Crit Care Med* 2005; 172(3): 306-313.
97. Berry MA, Hargadon B, Shelley M, Parker D, Shaw DE, Green RH, Bradding P, Brightling CE, Wardlaw AJ, Pavord ID. Evidence of a role of tumor necrosis factor alpha in refractory asthma. *N Engl J Med* 2006; 354(7): 697-708.
98. Brasier AR, Victor S, Ju H, Busse WW, Curran-Everett D, Bleecker E, Castro M, Chung KF, Gaston B, Israel E, Wenzel SE, Erzurum SC, Jarjour NN, Calhoun WJ. Predicting intermediate phenotypes in asthma using bronchoalveolar lavage-derived cytokines. *Clin Transl Sci* 2010; 3(4): 147-157.
99. Baines KJ, Simpson JL, Wood LG, Scott RJ, Gibson PG. Transcriptional phenotypes of asthma defined by gene expression profiling of induced sputum samples. *J Allergy Clin Immunol* 2011; 127(1): 153-160, 160 e151-159.
100. Wenzel SE, Barnes PJ, Bleecker ER, Bousquet J, Busse W, Dahlen SE, Holgate ST, Meyers DA, Rabe KF, Antczak A, Baker J, Horvath I, Mark Z, Bernstein D, Kerwin E, Schlenker-Herceg R, Lo KH, Watt R, Barnathan ES, Chanez P. A randomized, double-blind, placebo-controlled

study of tumor necrosis factor-alpha blockade in severe persistent asthma. *Am J Respir Crit Care Med* 2009; 179(7): 549-558.

101. Vachier I, Bonnans C, Chavis C, Farce M, Godard P, Bousquet J, Chanez P. Severe asthma is associated with a loss of LX4, an endogenous anti-inflammatory compound. *J Allergy Clin Immunol* 2005; 115(1): 55-60.

102. Levy BD, Bonnans C, Silverman ES, Palmer LJ, Marigowda G, Israel E, Severe Asthma Research Program NHL, Blood I. Diminished lipoxin biosynthesis in severe asthma. *Am J Respir Crit Care Med* 2005; 172(7): 824-830.

103. Bhavsar PK, Levy BD, Hew MJ, Pfeffer MA, Kazani S, Israel E, Chung KF. Corticosteroid suppression of lipoxin A4 and leukotriene B4 from alveolar macrophages in severe asthma. *Respir Res* 2010; 11: 71.

104. Tillie-Leblond I, de Blic J, Jaubert F, Wallaert B, Scheinmann P, Gosset P. Airway remodeling is correlated with obstruction in children with severe asthma. *Allergy* 2008; 63(5): 533-541.

105. Cohen L, E X, Tarsi J, Ramkumar T, Horiuchi TK, Cochran R, DeMartino S, Schechtman KB, Hussain I, Holtzman MJ, Castro M. Epithelial cell proliferation contributes to airway remodeling in severe asthma. *Am J Respir Crit Care Med* 2007; 176(2): 138-145.

106. Gras D, Bourdin A, Vachier I, de Senneville L, Bonnans C, Chanez P. An ex vivo model of severe asthma using reconstituted human bronchial epithelium. *J Allergy Clin Immunol* 2012; 129(5): 1259-1266 e1251.

107. James AL, Bai TR, Mauad T, Abramson MJ, Dolhnikoff M, McKay KO, Maxwell PS, Elliot JG, Green FH. Airway smooth muscle thickness in asthma is related to severity but not duration of asthma. *Eur Respir J* 2009; 34(5): 1040-1045.

108. Kaminska M, Foley S, Maghni K, Storness-Bliss C, Coxson H, Ghezzi H, Lemiere C, Olivenstein R, Ernst P, Hamid Q, Martin J. Airway remodeling in subjects with severe asthma with or without chronic persistent airflow obstruction. *J Allergy Clin Immunol* 2009; 124(1): 45-51 e41-44.

109. Hassan M, Jo T, Risse PA, Tolloczko B, Lemiere C, Olivenstein R, Hamid Q, Martin JG. Airway smooth muscle remodeling is a dynamic process in severe long-standing asthma. *J Allergy Clin Immunol* 2010; 125(5): 1037-1045 e1033.
110. Komakula S, Khatri S, Mermis J, Savill S, Haque S, Rojas M, Brown L, Teague GW, Holguin F. Body mass index is associated with reduced exhaled nitric oxide and higher exhaled 8-isoprostanes in asthmatics. *Respir Res* 2007; 8: 32.
111. Saunders R, Siddiqui S, Kaur D, Doe C, Sutcliffe A, Hollins F, Bradding P, Wardlaw A, Brightling CE. Fibrocyte localization to the airway smooth muscle is a feature of asthma. *J Allergy Clin Immunol* 2009; 123(2): 376-384.
112. Wang CH, Huang CD, Lin HC, Lee KY, Lin SM, Liu CY, Huang KH, Ko YS, Chung KF, Kuo HP. Increased circulating fibrocytes in asthma with chronic airflow obstruction. *Am J Respir Crit Care Med* 2008; 178(6): 583-591.
113. Payne DN, Rogers AV, Adelroth E, Bandi V, Guntupalli KK, Bush A, Jeffery PK. Early thickening of the reticular basement membrane in children with difficult asthma. *Am J Respir Crit Care Med* 2003; 167(1): 78-82.
114. Bourdin A, Neveu D, Vachier I, Paganin F, Godard P, Chanez P. Specificity of basement membrane thickening in severe asthma. *J Allergy Clin Immunol* 2007; 119(6): 1367-1374.
115. Dolhnikoff M, da Silva LF, de Araujo BB, Gomes HA, Fernezlían S, Mulder A, Lindeman JH, Mauad T. The outer wall of small airways is a major site of remodeling in fatal asthma. *J Allergy Clin Immunol* 2009; 123(5): 1090-1097, 1097 e1091.
116. Gupta S, Siddiqui S, Haldar P, Raj JV, Entwistle JJ, Wardlaw AJ, Bradding P, Pavord ID, Green RH, Brightling CE. Qualitative analysis of high-resolution CT scans in severe asthma. *Chest* 2009; 136(6): 1521-1528.
117. Aysola RS, Hoffman EA, Gierada D, Wenzel S, Cook-Granroth J, Tarsi J, Zheng J, Schechtman KB, Ramkumar TP, Cochran R, Xueping E, Christie C, Newell J, Fain S, Altes TA, Castro M. Airway remodeling measured by multidetector CT is increased in severe asthma and correlates with pathology. *Chest* 2008; 134(6): 1183-1191.

118. Busacker A, Newell JD, Jr., Keefe T, Hoffman EA, Granroth JC, Castro M, Fain S, Wenzel S. A multivariate analysis of risk factors for the air-trapping asthmatic phenotype as measured by quantitative CT analysis. *Chest* 2009; 135(1): 48-56.
119. Saglani S, Papaioannou G, Khoo L, Ujita M, Jeffery PK, Owens C, Hansell DM, Payne DN, Bush A. Can HRCT be used as a marker of airway remodelling in children with difficult asthma? *Respir Res* 2006; 7: 46.
120. de Lange EE, Altes TA, Patrie JT, Gaare JD, Knake JJ, Mugler JP, 3rd, Platts-Mills TA. Evaluation of asthma with hyperpolarized helium-3 MRI: correlation with clinical severity and spirometry. *Chest* 2006; 130(4): 1055-1062.
121. The ENFUMOSA cross-sectional European multicentre study of the clinical phenotype of chronic severe asthma. European Network for Understanding Mechanisms of Severe Asthma. *Eur Respir J* 2003; 22(3): 470-477.
122. in 't Veen JC, Beekman AJ, Bel EH, Sterk PJ. Recurrent exacerbations in severe asthma are associated with enhanced airway closure during stable episodes. *Am J Respir Crit Care Med* 2000; 161(6): 1902-1906.
123. Sorkness RL, Bleecker ER, Busse WW, Calhoun WJ, Castro M, Chung KF, Curran-Everett D, Erzurum SC, Gaston BM, Israel E, Jarjour NN, Moore WC, Peters SP, Teague WG, Wenzel SE. Lung function in adults with stable but severe asthma: air trapping and incomplete reversal of obstruction with bronchodilation. *J Appl Physiol* 2008; 104(2): 394-403.
124. Vignola AM, Riccobono L, Mirabella A, Profita M, Chanez P, Bellia V, Mautino G, D'Accardi P, Bousquet J, Bonsignore G. Sputum metalloproteinase-9/tissue inhibitor of metalloproteinase-1 ratio correlates with airflow obstruction in asthma and chronic bronchitis. *Am J Respir Crit Care Med* 1998; 158(6): 1945-1950.
125. Bumbacea D, Campbell D, Nguyen L, Carr D, Barnes PJ, Robinson D, Chung KF. Parameters associated with persistent airflow obstruction in chronic severe asthma. *The European Respiratory Journal : official journal of the European Society for Clinical Respiratory Physiology* 2004; 24(1): 122-128.

126. Thamrin C, Nydegger R, Stern G, Chanez P, Wenzel SE, Watt RA, FitzPatrick S, Taylor DR, Frey U. Associations between fluctuations in lung function and asthma control in two populations with differing asthma severity. *Thorax* 2011; 66(12): 1036-1042.
127. Lee JH, Haselkorn T, Borish L, Rasouliyan L, Chipps BE, Wenzel SE. Risk factors associated with persistent airflow limitation in severe or difficult-to-treat asthma: insights from the TENOR study. *Chest* 2007; 132(6): 1882-1889.
128. Gelb AF, Schein A, Nussbaum E, Shinar CM, Aelony Y, Aharonian H, Zamel N. Risk factors for near-fatal asthma. *Chest* 2004; 126(4): 1138-1146.
129. Mauad T, Silva LF, Santos MA, Grinberg L, Bernardi FD, Martins MA, Saldiva PH, Dolhnikoff M. Abnormal alveolar attachments with decreased elastic fiber content in distal lung in fatal asthma. *Am J Respir Crit Care Med* 2004; 170(8): 857-862.
130. Frey U, Brodbeck T, Majumdar A, Taylor DR, Town GI, Silverman M, Suki B. Risk of severe asthma episodes predicted from fluctuation analysis of airway function. *Nature* 2005; 438(7068): 667-670.
131. Thamrin C, Zindel J, Nydegger R, Reddel HK, Chanez P, Wenzel SE, FitzPatrick S, Watt RA, Suki B, Frey U. Predicting future risk of asthma exacerbations using individual conditional probabilities. *J Allergy Clin Immunol* 2011; 127(6): 1494-1502 e1493.
132. Robinson DS, Campbell DA, Durham SR, Pfeffer J, Barnes PJ, Chung KF. Systematic assessment of difficult-to-treat asthma. *Eur Respir J* 2003; 22(3): 478-483.
133. Aaron SD, Vandemheen KL, Boulet LP, McIvor RA, Fitzgerald JM, Hernandez P, Lemiere C, Sharma S, Field SK, Alvarez GG, Dales RE, Doucette S, Fergusson D. Overdiagnosis of asthma in obese and nonobese adults. *CMAJ* 2008; 179(11): 1121-1131.
134. Pakhale S, Doucette S, Vandemheen K, Boulet LP, McIvor RA, Fitzgerald JM, Hernandez P, Lemiere C, Sharma S, Field SK, Alvarez GG, Dales RE, Aaron SD. A comparison of obese and nonobese people with asthma: exploring an asthma-obesity interaction. *Chest*; 137(6): 1316-1323.
135. Standards for the diagnosis and care of patients with chronic obstructive pulmonary disease (COPD) and asthma. This official statement of the American Thoracic Society was adopted by the ATS Board of Directors, November 1986. *Am Rev Respir Dis* 1987; 136(1): 225-244.

136. Fitzpatrick AM, Gaston BM, Erzurum SC, Teague WG. Features of severe asthma in school-age children: Atopy and increased exhaled nitric oxide. *J Allergy Clin Immunol* 2006; 118(6): 1218-1225.
137. Simon MR, Chinchilli VM, Phillips BR, Sorkness CA, Lemanske RF, Jr., Szeffler SJ, Taussig L, Bacharier LB, Morgan W, Childhood Asthma R, Education Network of the National Heart L, Blood I. Forced expiratory flow between 25% and 75% of vital capacity and FEV1/forced vital capacity ratio in relation to clinical and physiological parameters in asthmatic children with normal FEV1 values. *J Allergy Clin Immunol* 2010; 126(3): 527-534 e521-528.
138. Heaney LG, Conway E, Kelly C, Johnston BT, English C, Stevenson M, Gamble J. Predictors of therapy resistant asthma: outcome of a systematic evaluation protocol. *Thorax* 2003; 58(7): 561-566.
139. Bracken M, Fleming L, Hall P, Van Stiphout N, Bossley C, Biggart E, Wilson NM, Bush A. The importance of nurse-led home visits in the assessment of children with problematic asthma. *Arch Dis Child* 2009; 94(10): 780-784.
140. Bush A, Saglani S. Management of severe asthma in children. *Lancet* 2010; 376(9743): 814-825.
141. Gamble J, Stevenson M, Heaney LG. A study of a multi-level intervention to improve non-adherence in difficult to control asthma. *Respir Med* 2011; 105(9): 1308-1315.
142. Moore WC, Bleecker ER, Curran-Everett D, Erzurum SC, Ameredes BT, Bacharier L, Calhoun WJ, Castro M, Chung KF, Clark MP, Dweik RA, Fitzpatrick AM, Gaston B, Hew M, Hussain I, Jarjour NN, Israel E, Levy BD, Murphy JR, Peters SP, Teague WG, Meyers DA, Busse WW, Wenzel SE. Characterization of the severe asthma phenotype by the National Heart, Lung, and Blood Institute's Severe Asthma Research Program. *J Allergy Clin Immunol* 2007; 119(2): 405-413.
143. Bossley CJ, Saglani S, Kavanagh C, Payne DN, Wilson N, Tsartsali L, Rosenthal M, Balfour-Lynn IM, Nicholson AG, Bush A. Corticosteroid responsiveness and clinical characteristics in childhood difficult asthma. *Eur Respir J* 2009; 34(5): 1052-1059.
144. Morgan WJ, Crain EF, Gruchalla RS, O'Connor GT, Kattan M, Evans R, 3rd, Stout J, Malindzak G, Smartt E, Plaut M, Walter M, Vaughn B, Mitchell H. Results of a home-based

environmental intervention among urban children with asthma. *N Engl J Med* 2004; 351(11): 1068-1080.

145. ten Brinke A, Grootendorst DC, Schmidt JT, De Bruine FT, van Buchem MA, Sterk PJ, Rabe KF, Bel EH. Chronic sinusitis in severe asthma is related to sputum eosinophilia. *J Allergy Clin Immunol* 2002; 109(4): 621-626.

146. Good JT, Jr., Kolakowski CA, Groshong SD, Murphy JR, Martin RJ. Refractory Asthma: Importance of Bronchoscopy to Identify Phenotypes and Direct Therapy. *Chest* 2011.

147. Mastronarde JG, Anthonisen NR, Castro M, Holbrook JT, Leone FT, Teague WG, Wise RA. Efficacy of esomeprazole for treatment of poorly controlled asthma. *N Engl J Med* 2009; 360(15): 1487-1499.

148. Holbrook JT, Wise RA, Gold BD, Blake K, Brown ED, Castro M, Dozor AJ, Lima JJ, Mastronarde JG, Sockrider MM, Teague WG. Lansoprazole for children with poorly controlled asthma: a randomized controlled trial. *Jama* 2012; 307(4): 373-381.

149. Friedman MS, Powell KE, Hutwagner L, Graham LM, Teague WG. Impact of changes in transportation and commuting behaviors during the 1996 Summer Olympic Games in Atlanta on air quality and childhood asthma. *Jama* 2001; 285(7): 897-905.

150. Vamos M, Kolbe J. Psychological factors in severe chronic asthma. *The Australian and New Zealand journal of psychiatry* 1999; 33(4): 538-544.

151. Sales J, Fivush R, Teague GW. The role of parental coping in children with asthma's psychological well-being and asthma-related quality of life. *J Pediatr Psychol* 2008; 33(2): 208-219.

152. Heaney LG, Conway E, Kelly C, Gamble J. Prevalence of psychiatric morbidity in a difficult asthma population: relationship to asthma outcome. *Respir Med* 2005; 99(9): 1152-1159.

153. Yorke J, Fleming SL, Shulldham CM. Psychological interventions for adults with asthma. *Cochrane database of systematic reviews* 2006(1): CD002982.

154. Green RH, Brightling CE, McKenna S, Hargadon B, Parker D, Bradding P, Wardlaw AJ, Pavord ID. Asthma exacerbations and sputum eosinophil counts: a randomised controlled trial. *Lancet* 2002; 360(9347): 1715-1721.

155. Pavord ID, Brightling CE, Woltmann G, Wardlaw AJ. Non-eosinophilic corticosteroid unresponsive asthma. *Lancet* 1999; 353(9171): 2213-2214.

156. Woodruff PG, Modrek B, Choy DF, Jia G, Abbas AR, Ellwanger A, Koth LL, Arron JR, Fahy JV. T-helper type 2-driven inflammation defines major subphenotypes of asthma. *Am J Respir Crit Care Med* 2009; 180(5): 388-395.
157. Horn BR, Robin ED, Theodore J, Van Kessel A. Total eosinophil counts in the management of bronchial asthma. *N Engl J Med* 1975; 292(22): 1152-1155.
158. Brown L, Parrot H, Porter EC. Farmer's lung; case report. *The Journal of the Maine Medical Association* 1958; 49(12): 447-449.
159. Haldar P, Brightling CE, Hargadon B, Gupta S, Monteiro W, Sousa A, Marshall RP, Bradding P, Green RH, Wardlaw AJ, Pavord ID. Mepolizumab and exacerbations of refractory eosinophilic asthma. *N Engl J Med* 2009; 360(10): 973-984.
160. Fleming L, Wilson N, Regamey N, Bush A. Use of sputum eosinophil counts to guide management in children with severe asthma. *Thorax* 2012; 67(3): 193-198.
161. ten Brinke A, Zwinderman AH, Sterk PJ, Rabe KF, Bel EH. "Refractory" eosinophilic airway inflammation in severe asthma: effect of parenteral corticosteroids. *Am J Respir Crit Care Med* 2004; 170(6): 601-605.
162. Ogirala RG, Aldrich TK, Prezant DJ, Sinnett MJ, Enden JB, Williams MH, Jr. High-dose intramuscular triamcinolone in severe, chronic, life-threatening asthma [published erratum appears in *N Engl J Med* 1991 May 9;324(19):1380] [see comments]. *NEnglJMed* 1991; 324(9): 585-589.
163. Bhavsar P, Hew M, Khorasani N, Torrego A, Barnes PJ, Adcock I, Chung KF. Relative corticosteroid insensitivity of alveolar macrophages in severe asthma compared with non-severe asthma. *Thorax* 2008; 63(9): 784-790.
164. Hew M, Bhavsar P, Torrego A, Meah S, Khorasani N, Barnes PJ, Adcock I, Chung KF. Relative corticosteroid insensitivity of peripheral blood mononuclear cells in severe asthma. *Am J Respir Crit Care Med* 2006; 174(2): 134-141.
165. Goleva E, Hauk PJ, Hall CF, Liu AH, Riches DW, Martin RJ, Leung DY. Corticosteroid-resistant asthma is associated with classical antimicrobial activation of airway macrophages. *J Allergy Clin Immunol* 2008; 122(3): 550-559 e553.

166. Chang P, Bhavsar PK, Michaeloudes C, Khorasani N, Chung KF. Corticosteroid insensitivity of chemokine expression in airway smooth muscle of severe asthma. *J All Clin Immunol* 2012; 130(4): 877-885 e875.
167. Sutherland ER, Goleva E, Strand M, Beuther DA, Leung DY. Body mass and glucocorticoid response in asthma. *AmJRespirCrit Care Med* 2008; 178(7): 682-687.
168. Chalmers GW, MacLeod KJ, Little SA, Thomson LJ, McSharry CP, Thomson NC. Influence of cigarette smoking on inhaled corticosteroid treatment in mild asthma. *Thorax* 2002; 57(3): 226-230.
169. Xystrakis E, Kusumakar S, Boswell S, Peek E, Urry Z, Richards DF, Adikibi T, Pridgeon C, Dallman M, Loke TK, Robinson DS, Barrat FJ, O'Garra A, Lavender P, Lee TH, Corrigan C, Hawrylowicz CM. Reversing the defective induction of IL-10-secreting regulatory T cells in glucocorticoid-resistant asthma patients. *JClinInvest* 2006; 116(1): 146-155.
170. Gupta A, Sjoukes A, Richards D, Banya W, Hawrylowicz C, Bush A, Saglani S. Relationship between serum vitamin D, disease severity, and airway remodeling in children with asthma. *AmJRespirCrit Care Med* 2011; 184(12): 1342-1349.
171. Berry M, Morgan A, Shaw DE, Parker D, Green R, Brightling C, Bradding P, Wardlaw AJ, Pavord ID. Pathological features and inhaled corticosteroid response of eosinophilic and non-eosinophilic asthma. *Thorax* 2007; 62(12): 1043-1049.
172. Jatakanon A, Uasuf C, Maziak W, Lim S, Chung KF, Barnes PJ. Neutrophilic inflammation in severe persistent asthma. *Am J Respir Crit Care Med* 1999; 160(5 Pt 1): 1532-1539.
173. McGrath KW, Icitovic N, Boushey HA, Lazarus SC, Sutherland ER, Chinchilli VM, Fahy JV. A large subgroup of mild-to-moderate asthma is persistently noneosinophilic. *AmJRespirCrit Care Med* 2012; 185(6): 612-619.
174. Ito K, Chung KF, Adcock IM. Update on glucocorticoid action and resistance. *J Allergy Clin Immunol* 2006; 117(3): 522-543.
175. Hew M, Chung KF. Corticosteroid insensitivity in severe asthma: significance, mechanisms and aetiology. *InternMedJ* 2010; 40(5): 323-334.
176. Davies H, Olson L, Gibson P. Methotrexate as a steroid sparing agent for asthma in adults. *Cochrane database of systematic reviews* 2000(2): CD000391.

177. Nierop G, Gijzel WP, Bel EH, Zwinderman AH, Dijkman JH. Auranofin in the treatment of steroid dependent asthma: a double blind study. *Thorax* 1992; 47(5): 349-354.
178. Lock SH, Kay AB, Barnes NC. Double-blind, placebo-controlled study of cyclosporin A as a corticosteroid-sparing agent in corticosteroid-dependent asthma [see comments]. *Am J Respir Crit Care Med* 1996; 153(2): 509-514.
179. Salmun LM, Barlan I, Wolf HM, Eibl M, Twarog FJ, Geha RS, Schneider LC. Effect of intravenous immunoglobulin on steroid consumption in patients with severe asthma: a double-blind, placebo-controlled, randomized trial. *J Allergy Clin Immunol* 1999; 103(5 Pt 1): 810-815.
180. Kishiyama JL, Valacer D, Cunningham-Rundles C, Sperber K, Richmond GW, Abramson S, Glovsky M, Stiehm R, Stocks J, Rosenberg L, Shames RS, Corn B, Shearer WT, Bacot B, DiMaio M, Tonetta S, Adelman DC. A multicenter, randomized, double-blind, placebo-controlled trial of high-dose intravenous immunoglobulin for oral corticosteroid-dependent asthma. *Clin Immunol* 1999; 91(2): 126-133.
181. Adams NP, Bestall JC, Jones P, Lasserson TJ, Griffiths B, Cates CJ. Fluticasone at different doses for chronic asthma in adults and children. *CochraneDatabaseSystRev* 2008(4): CD003534.
182. Bateman ED, Boushey HA, Bousquet J, Busse WW, Clark TJ, Pauwels RA, Pedersen SE. Can guideline-defined asthma control be achieved? The Gaining Optimal Asthma Control study. *Am J Respir Crit Care Med* 2004; 170(8): 836-844.
183. Osborne J, Mortimer K, Hubbard RB, Tattersfield AE, Harrison TW. Quadrupling the dose of inhaled corticosteroid to prevent asthma exacerbations: a randomized, double-blind, placebo-controlled, parallel-group clinical trial. *Am J Respir Crit Care Med* 2009; 180(7): 598-602.
184. Reddel HK, Barnes DJ, Exacerbation Advisory P. Pharmacological strategies for self-management of asthma exacerbations. *Eur Respir J* 2006; 28(1): 182-199.
185. Allen DB, Bielory L, Derendorf H, Dluhy R, Colice GL, Szeffler SJ. Inhaled corticosteroids: past lessons and future issues. *J Allergy Clin Immunol* 2003; 112(3 Suppl): S1-40.
186. van Staa TP, Cooper C, Leufkens HG, Bishop N. Children and the risk of fractures caused by oral corticosteroids. *J Bone MinerRes* 2003; 18(5): 913-918.

187. Allen DB, Mullen M, Mullen B. A meta-analysis of the effect of oral and inhaled corticosteroids on growth. *J Allergy Clin Immunol* 1994; 93: 967-976.
188. Pedersen S. Do inhaled corticosteroids inhibit growth in children? *Am J Respir Crit Care Med* 2001; 164(4): 521-535.
189. Allen DB. Effects of inhaled steroids on growth, bone metabolism and adrenal function. *Expert Rev Respir Med* 2007; 1(1): 65-74.
190. Sin DD, Sutherland ER. Obesity and the lung; 4. Obesity and asthma. *Thorax* 2008; 63(11): 1018-1023.
191. Kelly HW, Sternberg AL, Lescher R, Fuhlbrigge AL, Williams P, Zeiger RS, Raissy HH, Van Natta ML, Tonascia J, Strunk RC. Effect of inhaled glucocorticoids in childhood on adult height. *NEngl J Med* 2012; 367(10): 904-912.
192. Grossman JM, Gordon R, Ranganath VK, Deal C, Caplan L, Chen W, Curtis JR, Furst DE, McMahon M, Patkar NM, Volkman E, Saag KG. American College of Rheumatology 2010 recommendations for the prevention and treatment of glucocorticoid-induced osteoporosis. *Arthritis Care Res (Hoboken)* 2010; 62(11): 1515-1526.
193. Brutsche MH, Brutsche IC, Munawar M, Langley SJ, Masterson CM, Daley-Yates PT, Brown R, Custovic A, Woodcock A. Comparison of pharmacokinetics and systemic effects of inhaled fluticasone propionate in patients with asthma and healthy volunteers: a randomised crossover study. *Lancet* 2000; 356(9229): 556-561.
194. Pedersen SE, Bateman ED, Bousquet J, Busse WW, Yoxall S, Clark TJ, Gaining Optimal Asthma contro LSC, Investigators. Determinants of response to fluticasone propionate and salmeterol/fluticasone propionate combination in the Gaining Optimal Asthma controL study. *J Allergy Clin Immunol* 2007; 120(5): 1036-1042.
195. Lemanske RF, Jr., Mauger DT, Sorkness CA, Jackson DJ, Boehmer SJ, Martinez FD, Strunk RC, Szeffler SJ, Zeiger RS, Bacharier LB, Covar RA, Guilbert TW, Larsen G, Morgan WJ, Moss MH, Spahn JD, Taussig LM. Step-up therapy for children with uncontrolled asthma receiving inhaled corticosteroids. *NEngl J Med* 2010; 362(11): 975-985.

196. Ayres J, Fish DR, Wheeler DC, Wiggins J, Cochrane GM, Skinner C. Subcutaneous terbutaline and control of brittle asthma or appreciable morning dipping. *BrMedJClinResEd* 1984; 288(6432): 1715-1716.
197. Lai CK, Twentyman OP, Holgate ST. The effect of an increase in inhaled allergen dose after rimiterol hydrobromide on the occurrence and magnitude of the late asthmatic response and the associated change in nonspecific bronchial responsiveness. *AmRev Respir Dis* 1989; 140(4): 917-923.
198. Aldridge RE, Hancox RJ, Robin TD, Cowan JO, Winn MC, Frampton CM, Ian TG. Effects of terbutaline and budesonide on sputum cells and bronchial hyperresponsiveness in asthma. *Am J Respir Crit Care Med* 2000; 161(5): 1459-1464.
199. Lazarus SC, Boushey HA, Fahy JV, Chinchilli VM, Lemanske RF, Jr., Sorkness CA, Kraft M, Fish JE, Peters SP, Craig T, Drazen JM, Ford JG, Israel E, Martin RJ, Mauger EA, Nachman SA, Spahn JD, Szeffler SJ. Long-acting beta2-agonist monotherapy vs continued therapy with inhaled corticosteroids in patients with persistent asthma: a randomized controlled trial. *JAMA* 2001; 285(20): 2583-2593.
200. Taylor DR, Sears MR, Herbison GP, Flannery EM, Print CG, Lake DC, Yates DM, Lucas MK, Li Q. Regular inhaled beta agonist in asthma: effects on exacerbations and lung function. *Thorax* 1993; 48(2): 134-138.
201. Suissa S, Ernst P, Boivin JF, Horwitz RI, Habbick B, Cockcroft D, Blais L, McNutt M, Buist AS, Spitzer WO. A cohort analysis of excess mortality in asthma and the use of inhaled beta-agonists. *Am J Respir Crit Care Med* 1994; 149(3 Pt 1): 604-610.
202. Naqvi M, Tcheurekdjian H, DeBoard JA, Williams LK, Navarro D, Castro RA, Rodriguez-Santana JR, Chapela R, Watson HG, Meade K, Rodriguez-Cintron W, LeNoir M, Thyne SM, Avila PC, Choudhry S, Burchard EG. Inhaled corticosteroids and augmented bronchodilator responsiveness in Latino and African American asthmatic patients. *Annals of allergy, asthma & immunology : official publication of the American College of Allergy, Asthma, & Immunology* 2008; 100(6): 551-557.

203. Wechsler ME, Castro M, Lehman E, Chinchilli VM, Sutherland ER, Denlinger L, Lazarus SC, Peters SP, Israel E, Network NACR. Impact of race on asthma treatment failures in the asthma clinical research network. *Am J Respir Crit Care Med* 2011; 184(11): 1247-1253.
204. Taylor DR, Hannah D. Management of beta-agonist overuse: why and how? *J Allergy Clin Immunol* 2008; 122(4): 836-838.
205. Rodrigo GJ, Castro-Rodriguez JA. Anticholinergics in the treatment of children and adults with acute asthma: a systematic review with meta-analysis. *Thorax* 2005; 60(9): 740-746.
206. Teoh L, Cates CJ, Hurwitz M, Acworth JP, van Asperen P, Chang AB. Anticholinergic therapy for acute asthma in children. *Cochrane database of systematic reviews* 2012; 4: CD003797.
207. Sears MR, Rea HH, Fenwick J, Gillies AJ, Holst PE, O'Donnell TV, Rothwell RP. 75 deaths in asthmatics prescribed home nebulisers. *British medical journal* 1987; 294(6570): 477-480.
208. Cates CJ, Crilly JA, Rowe BH. Holding chambers (spacers) versus nebulisers for beta-agonist treatment of acute asthma. *Cochrane database of systematic reviews* 2006(2): CD000052.
209. Evans DJ, Taylor DA, Zetterstrom O, Chung KF, O'Connor BJ, Barnes PJ. Theophylline plus low dose inhaled steroid is as effective as high dose inhaled steroid in the control of asthma. *New Eng J Med* 1997; 337: 1412-1418.
210. Spears M, Donnelly I, Jolly L, Brannigan M, Ito K, McSharry C, Lafferty J, Chaudhuri R, Braganza G, Adcock IM, Barnes PJ, Wood S, Thomson NC. Effect of low-dose theophylline plus beclometasone on lung function in smokers with asthma: a pilot study. *Eur Respir J* 2009; 33(5): 1010-1017.
211. Seddon P, Bara A, Ducharme FM, Lasserson TJ. Oral xanthines as maintenance treatment for asthma in children. *CochraneDatabaseSystRev* 2006(1): CD002885.
212. Dahlen B, Nizankowska E, Szczeklik A, Zetterstrom O, Bochenek G, Kumlin M, Mastalerz L, Pinis G, Swanson LJ, Boodhoo TI, Wright S, Dube LM, Dahlen SE. Benefits from adding the 5-lipoxygenase inhibitor zileuton to conventional therapy in aspirin-intolerant asthmatics. *Am J Respir Crit Care Med* 1998; 157(4 Pt 1): 1187-1194.
213. Dahlen SE, Malmstrom K, Nizankowska E, Dahlen B, Kuna P, Kowalski M, Lumry WR, Picado C, Stevenson DD, Bousquet J, Pauwels R, Holgate ST, Shahane A, Zhang J, Reiss TF, Szczeklik A. Improvement of aspirin-intolerant asthma by montelukast, a leukotriene

antagonist: a randomized, double-blind, placebo-controlled trial. *Am J Respir Crit Care Med* 2002; 165(1): 9-14.

214. Virchow JC, Jr., Prasse A, Naya I, Summerton L, Harris A. Zafirlukast improves asthma control in patients receiving high-dose inhaled corticosteroids. *Am J Respir Crit Care Med* 2000; 162(2 Pt 1): 578-585.

215. Robinson DS, Campbell D, Barnes PJ. Addition of leukotriene antagonists to therapy in chronic persistent asthma: a randomised double-blind placebo-controlled trial. *Lancet* 2001; 357(9273): 2007-2011.

216. Kerstjens HA, Disse B, Schroder-Babo W, Bantje TA, Gahlemann M, Sigmund R, Engel M, van Noord JA. Tiotropium improves lung function in patients with severe uncontrolled asthma: a randomized controlled trial. *J Allergy Clin Immunol* 2011; 128(2): 308-314.

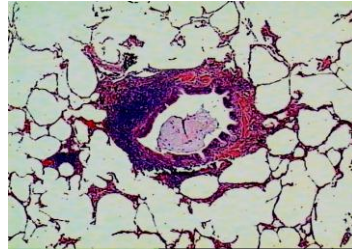
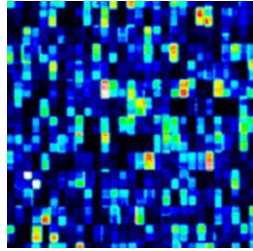
217. Peters SP, Kunselman SJ, Icitovic N, Moore WC, Pascual R, Ameredes BT, Boushey HA, Calhoun WJ, Castro M, Cherniack RM, Craig T, Denlinger L, Engle LL, DiMango EA, Fahy JV, Israel E, Jarjour N, Kazani SD, Kraft M, Lazarus SC, Lemanske RF, Jr., Lugogo N, Martin RJ, Meyers DA, Ramsdell J, Sorkness CA, Sutherland ER, Szeffler SJ, Wasserman SI, Walter MJ, Wechsler ME, Chinchilli VM, Bleecker ER. Tiotropium bromide step-up therapy for adults with uncontrolled asthma. *N Engl J Med* 2010; 363(18): 1715-1726.

218. Kerstjens HA, Engel M, Dahl R, Paggiaro P, Beck E, Vandewalker M, Sigmund R, Seibold W, Moroni-Zentgraf P, Bateman ED. Tiotropium in Asthma Poorly Controlled with Standard Combination Therapy. *N Engl J Med* 2012; 367(13): 1198-1207.

219. Flood-Page P, Swenson C, Faierman I, Matthews J, Williams M, Brannick L, Robinson D, Wenzel S, Busse W, Hansel TT, Barnes NC. A study to evaluate safety and efficacy of mepolizumab in patients with moderate persistent asthma. *Am J Respir Crit Care Med* 2007; 176(11): 1062-1071.

220. Jia G, Erickson RW, Choy DF, Mosesova S, Wu LC, Solberg OD, Shikotra A, Carter R, Audusseau S, Hamid Q, Bradding P, Fahy JV, Woodruff PG, Harris JM, Arron JR. Periostin is a systemic biomarker of eosinophilic airway inflammation in asthmatic patients. *J Allergy Clin Immunol* 2012; 130(3): 647-654.

221. Corren J, Busse W, Meltzer EO, Mansfield L, Bensch G, Fahrenholz J, Wenzel SE, Chon Y, Dunn M, Weng HH, Lin SL. A randomized, controlled, phase 2 study of AMG 317, an IL-4/Ralpha antagonist, in patients with asthma. *Am J Respir Crit Care Med* 2010; 181(8): 788-796.
222. Humbert M, de Blay F, Garcia G, Prud'homme A, Leroyer C, Magnan A, Tunon-de-Lara JM, Pison C, Aubier M, Charpin D, Vachier I, Purohit A, Gineste P, Bader T, Moussy A, Hermine O, Chanez P. Masitinib, a c-kit/PDGF receptor tyrosine kinase inhibitor, improves disease control in severe corticosteroid-dependent asthmatics. *Allergy* 2009; 64(8): 1194-1201.
223. Busse WW, Israel E, Nelson HS, Baker JW, Charous BL, Young DY, Vexler V, Shames RS. Daclizumab improves asthma control in patients with moderate to severe persistent asthma: a randomized, controlled trial. *Am J Respir Crit Care Med* 2008; 178(10): 1002-1008.
224. Nair P, Gaga M, Zervas E, Alagha K, Hargreave FE, O'Byrne PM, Stryszak P, Gann L, Sadeh J, Chanez P. Safety and efficacy of a CXCR2 antagonist in patients with severe asthma and sputum neutrophils: a randomized, placebo controlled clinical trial. *Clin Exp Allergy* 2012; 42(7): 1097-1103.
225. Kips JC, O'Connor BJ, Langley SJ, Woodcock A, Kerstjens HA, Postma DS, Danzig M, Cuss F, Pauwels RA. Effect of SCH55700, a humanized anti-human interleukin-5 antibody, in severe persistent asthma: a pilot study. *Am J Respir Crit Care Med* 2003; 167(12): 1655-1659.



Genes

Gene
expression

Airway
histology

Lung
function

The
patient



Severe asthma phenotyping

Genetics
Epigenetics
Transcriptome
Proteome
Metabolome
Microbiome
Immunity
Inflammation
Remodeling
BHR
Obstruction
Symptoms
Co-morbidity
Quality of life

Th2

Th1

Allergies

Pathogen/Physical/Cellular/Metabolic

Smoking

