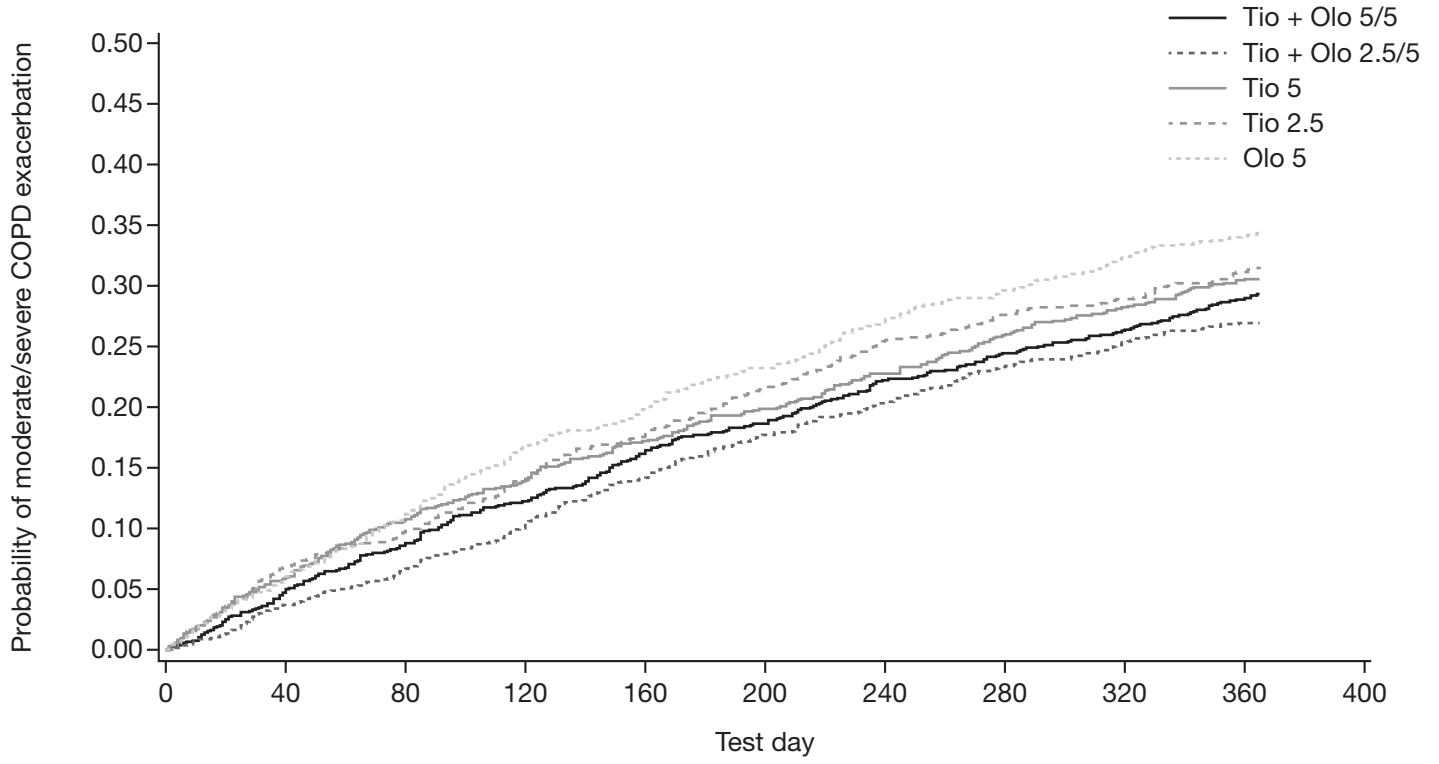


Figure S3



Number at risk

Tio + Olo 5/5	1029	964	910	863	811	775	735	706	686	646	1
Tio + Olo 2.5/5	1030	979	937	884	839	791	753	720	696	668	0
Tio 5	1033	952	880	832	786	752	716	679	647	613	2
Tio 2.5	1032	937	895	832	787	736	691	665	648	615	1
Olo 5	1038	952	874	802	752	715	671	642	607	576	1

	Risk ratio	95% CI	p-value
Tio + Olo 5/5 versus Olo 5	0.8340	0.7058, 0.9856	0.0332
versus Tio 5	0.9247	0.7811, 1.0947	0.3631
Tio + Olo 2.5/5 versus Olo 5	0.6865	0.5781, 0.8152	<0.0001
versus Tio 2.5	0.7608	0.6393, 0.9053	0.0021
versus Tio 5	0.7611	0.6399, 0.9054	0.0021