



Early View

Original article

Effectiveness of a specialised breathlessness service for patients with advanced disease in Germany: a pragmatic fast track randomised controlled trial (BreathEase)

Michaela Schunk, Lien Le, Zulfiya Syunyaeva, Birgit Haberland, Susanne Tänzler, Ulrich Mansmann, Larissa Schwarzkopf, Hildegard Seidl, Sabine Streitwieser, Miriam Hofmann, Thomas Müller, Tobias Weiß, Philipp Morawietz, Eva Annette Rehfuess, Rudolf Maria Huber, Ursula Berger, Claudia Bausewein

Please cite this article as: Schunk M, Le L, Syunyaeva Z, *et al.* Effectiveness of a specialised breathlessness service for patients with advanced disease in Germany: a pragmatic fast track randomised controlled trial (BreathEase). *Eur Respir J* 2021; in press (<https://doi.org/10.1183/13993003.02139-2020>).

This manuscript has recently been accepted for publication in the *European Respiratory Journal*. It is published here in its accepted form prior to copyediting and typesetting by our production team. After these production processes are complete and the authors have approved the resulting proofs, the article will move to the latest issue of the ERJ online.

Effectiveness of a specialized breathlessness service for patients with advanced disease in Germany: a pragmatic fast track randomized controlled trial (BreathEase)

Schunk Michaela^{1,6}, Le Lien², Syunyaeva Zulfiya^{3,8}, Haberland Birgit¹, Tänzler Susanne¹, Mansmann Ulrich^{2,6}, Schwarzkopf Larissa^{4,7,8}, Seidl Hildegard^{4,6,9}, Streitwieser Sabine¹, Hofmann Miriam², Müller Thomas², Weiß Tobias⁵, Morawietz Philipp⁵, Rehfuess Eva Annette^{2,6}, Huber Rudolf Maria^{3,8}, Berger Ursula^{2,6}, Bausewein Claudia¹

¹Department of Palliative Medicine, LMU Hospital, LMU Munich, Munich, Germany

²Institute for Medical Information Processing, Biometry and Epidemiology, Faculty of Medicine, LMU Munich, Munich, Germany

³Department of Medicine V, LMU Hospital, LMU Munich, Munich, Germany

⁴Health Economics and Health Care Management (IGM), Helmholtz Zentrum München (GmbH), German Research Center for Environmental Health, Munich, Germany

⁵Atem- und Physiotherapie Solln, Munich, Germany

⁶Pettenkofer School of Public Health, Munich, Germany

⁷IFT-Institut fuer Therapieforschung, Munich, Germany

⁸Member of the German Center of Lung Research (DZL, CPC-M)

⁹München Klinik gGmbH, Quality Management and Gender Medicine, Munich, Germany

Corresponding author: Dr Michaela Schunk, Department of Palliative Medicine, LMU Hospital, LMU Munich, Campus Großhadern, Marchioninistr.15, 81377 München, Germany. Fax: ++49 89 440077929; Tel.: ++49 89 440077946; michaela.schunk@med.uni-muenchen.de

Introduction

Breathlessness is a common and distressing symptom in advanced stages of malignant and non-malignant disease (1-4). Breathlessness is highly prevalent, occurring in up to 80% of patients with advanced cancer, in around 56-98% of patients with chronic obstructive pulmonary disease (COPD) and in up to 90% of patients with chronic heart failure (CHF) (5, 6). Patients with chronic breathlessness resulting from advanced disease report high symptom burden, palliative care needs (7-9) and suffer from anxiety and depression (10). Negative consequences on health and quality of life (QoL) have been shown, e.g. for COPD patients (11). Breathlessness is one of the most common reasons for emergency department visits and hospital admissions in cancer patients (12-14). With ageing populations and the current Covid-19 pandemic with potential post-infectious fibrotic lung damage (15), the prevalence of breathlessness is likely to increase further, demanding innovative healthcare approaches. Multidisciplinary research to improve the management of chronic breathlessness has been called for by the American Thoracic Society (4). In developing and assessing interventions, it is necessary to capture the multidimensional impact of chronic breathlessness on physical, emotional and social health and well-being using a range of patient-reported outcomes (2). Specialist breathlessness services have been developed within palliative medicine offering a complex multidisciplinary intervention that integrates evidence-based non-pharmacological and pharmacological interventions (16) to help in coping with chronic breathlessness. In Cambridge, the Breathlessness Intervention Service (BIS) mainly sees patients at home, offering both medical and physiotherapy input (17). In London, a joint palliative care and respiratory medicine outpatient service (BSS) has been established for patients with advanced disease offering two clinic appointments and a physiotherapy home visit. These services showed improvements in patients' distress from breathlessness (16) and mastery of breathlessness respectively (18). However, similar services have not yet been established and evaluated outside the UK. As healthcare systems differ in ways that may affect the effectiveness of specialized breathlessness services, for example, a greater provision of specialist respiratory services in Germany compared with the UK, we developed and evaluated the Munich Breathlessness Service (MBS).

The main aim of this trial (BreathEase NCT 02622412) was to determine the effect of the MBS on mastery of breathlessness, QoL and symptom burden in patients suffering from breathlessness resulting from advanced disease, compared to usual care. Further objectives were to examine the effect of MBS attendance i) on the burden for the patients' informal carers, ii) on breathlessness severity, psychological outcomes and physical performance, iii) on healthcare resource use and costs and, iv) the influence of factors such as cancer status, existence of an informal carer, demographic characteristics and other underlying conditions.

This paper addresses the effectiveness of the MBS regarding the main objective, i.e. mastery of breathlessness, QoL and symptom burden, as well as regarding objectives relating to the burden for informal carers, breathlessness severity, psychological outcomes and physical performance. Further publications will cover analyses of the other objectives.

Methods

Trial design

We conducted a single-blinded randomized controlled fast track trial between March 2014 and April 2019, which we report following the CONSORT 2010 statement (19), the CONSORT PRO Extension (20) and the CONSORT Statement for Randomized Trials of Nonpharmacologic Treatments (21). The intervention group received immediate access to the MBS, whereas the control group gained access after a waiting time of 8 weeks. All patients, irrespective of their allocation, continued with standard care throughout the trial with access to respiratory specialists, general practitioners, any disease-orientated treatment (e.g. anti-obstructive treatment, oxygen supply if indicated, maintenance chemotherapy) as well as palliative care services as needed.

Participants

Inclusion in the trial was based on the following criteria: patients i) affected by breathlessness on exertion or at rest resulting from any advanced life-limiting and progressive disease such as cancer, COPD, CHF, interstitial lung disease (ILD) or pulmonary hypertension despite best practice medical treatment of the underlying condition, and ii) able to engage (in a cognitive and functional manner) in a multi-faceted intervention programme including physiotherapy and self-management. If patients were suffering from acute exacerbations of the underlying conditions at the time of recruitment, they were put on a waiting list for several weeks and then entered the trial after recovery. Exclusion criteria were: patients i) suffering from breathlessness as a result of chronic hyperventilation syndrome, asthma or any other unknown cause, ii) unable to provide informed consent or to physically attend at least one outpatient appointment at the hospital, and iii) currently treated for malignant disease (concurrent radiotherapy or systemic treatment other than maintenance therapy) or participating in any drug trial focusing on the underlying condition.

Patients' carers were asked to participate in the trial if they were the main informal carer (henceforth referred to as carers) and in almost daily contact. Professional carers were excluded from participation.

Intervention

The MBS operates from Munich University Hospital as a multi-professional outpatient clinic. It is staffed by doctors from palliative medicine and provides access to specialist physiotherapists and, if needed, respiratory specialists, psychologists and social workers. Conceived as a short-term intervention, patients have up to two personal contacts with palliative care specialists and three or four specialist respiratory physiotherapy treatments within 6 weeks. The MBS is provided within the German healthcare system. Under statutory health insurance, clinic visits for outpatients are free of charge, but co-payments are required towards physiotherapy and for privately insured patients.

Intervention procedures followed a step-by-step intervention manual, which was fully described in the study protocol before the beginning of the trial. Intervention fidelity was documented for each patient enrolled in the study and for care providers. In view of a dense network of local respiratory specialists in private practice serving the study population, the MBS adapted intervention procedures during the second half of the trial, offering consultation with in-house respiratory specialists only as needed. For an overview of the intervention, see Table 1.

Table 1 Step-by-step MBS intervention

Time	Type of contact	Professional	Action
1 st week	Clinic visit	Physicians from palliative and respiratory medicine	<p>Palliative medicine:</p> <ul style="list-style-type: none">- assessment of intensity and quality of breathlessness, including emotional stress of patient and carer- review of symptom burden and concerns in advanced illness (IPOS)- non-pharmacological measures for symptom control (e.g. information brochure, hand-held fan, mantras, relaxation CD)- development of breathlessness plan for emergency situations- if needed: referral to social worker or psychologist- if needed: medication (e.g. morphine) <p>Respiratory medicine (either from hospital or in practices):</p> <ul style="list-style-type: none">- assessment of cause of breathlessness- review of treatment plan (incl. medication and long-term oxygen use)- review of results from functional tests

and physical examinations

	Letter to patients	Physician (palliative medicine)	Summary of assessment and recommendations, development of MBS treatment plan Copy to referring physician(s)
2 nd to 5 th week	Physiotherapy visits	Physiotherapist	- exercise and positions to facilitate breathing - breathing techniques - exercise plan - assessment of need for medical aids
3 rd week	Telephone (optional)	Physician (palliative medicine)	Follow-up on response to recommendations
6 th week	Clinic visit	Physician (palliative medicine)	- assessment of intensity and quality of breathlessness, including emotional stress of patient and carer - review of symptom burden and concerns in advanced illness (IPOS) - review of MBS treatment plan (incl. individualized recommendations for non-medical treatments and medication use - if needed: referral to specialists
	Letter to patients	Physician (palliative medicine)	Summary of progress in breathlessness management, further recommendations Copy to referring physician(s)

Outcome measurement

Effects of interventions are often multidimensional (22, 23). A single primary endpoint may not provide a comprehensive picture of the important effects of an intervention. This study investigates the impact of the MBS, ordered hierarchically by their clinical importance, on four primary outcome variables:

1. Change in patients' mastery of breathlessness measured using the Chronic Respiratory Disease Questionnaire CRQ (domain mastery)
2. Change in patients' QoL measured by the CRQ (all items)
3. Change in symptom burden and concerns related to advanced illness assessed with the Integrated Palliative care Outcome Scale (IPOS) (all items)
4. Change in carer burden assessed with the Zarit Burden Inventory (ZBI) (all items)

In the following, these outcome variables are referred to as 'change scores'.

The CRQ is a validated and reliable QoL measure for patients with chronic lung disease (27, 28). The CRQ contains of 20 items across four domains: dyspnoea (5 items), fatigue (4 items), emotional function (7 items) and mastery (4 items). QoL is calculated by adding the responses to all 20 items. Scale range in the CRQ is 1–7, with higher values indicating lower burden. We used the self-administered individualized format, which requires eliciting the activities that made respondents feel most short of breath. Symptom burden and concerns related to advanced illness were assessed with the German version of the IPOS (Patient version, 1-week recall period) (24). Carer burden was assessed with the 22-item version of the ZBI, measuring personal and role strain (25, 26).

Secondary outcome variables were the numerical rating scales (NRS) for average breathlessness over the last 24 hours, anxiety and depression assessed with the Hospital Anxiety and Depression Scale (HADS) (27) and lower extremity function measured with the Short Physical Performance Battery (SPPB) (28). Further measurements included NRS scales for breathlessness at rest and on exertion, the EQ5D-5L as a generic QoL measure (29), as well as lung function tests (forced expiratory volume in 1 second [FEV1], forced vital capacity [FVC]), measured with spirometry using a handheld device (CareFusion Micro I) and pulse oximetric saturation (SpO₂).

Outcomes were measured at T0 = baseline (prior to randomization); T1 = end of intervention (intervention group)/end of waiting period (control group) (from T0 + week 8); T2 = after intervention (intervention group)/end of intervention (control group) (from T0 + week 16); FU = follow-up by telephone (from T0 + week 28). T2 and FU data are not included in the present analysis. The study nurse facilitated the completion of the self-administered questionnaires through home visits to the patients (T0–T2) and with one telephone interview (FU). Carers completed paper-based questionnaires. Study procedures were specified in advance and described in a manual to ensure consistency over the course of the study. Any unfavourable medical occurrence, severe or non-severe, was recorded during the study and examined by the lead clinician.

Sample size

Sample size estimation performed prior to recruitment required 80 patients per group to detect a mean difference of 0.45 in the change score of CRQ QoL and CRQ Mastery with a standard deviation of 1 (30) at a significance level of $\alpha=0.05$ with a power of 80%. This sample size also allows for the detection of medium effects in IPOS scores and the ZBI, expecting n=60 carers per group. Mid-term blinded sample size re-estimation based on outcome data suggested no adjustment. DrawingBased

on experience from the London BSS trial (18), we expected an uptake of 50% and 25% attrition and planned screening of 430 patients to have 160 patients with complete data for analysis at T1.

Randomization

Baseline assessment of patients was undertaken before allocation to the intervention group (fast track) or the control group (waiting group). Patients were randomized by the Institute for Medical Information Processing, Biometry and Epidemiology, LMU Munich, immediately following the baseline interview using a 1:1 allocation ratio, with a web-based application (eCRF) that accessed the randomization list stored in a central database. Randomization was stratified by disease (cancer/non-cancer) and the existence of a carer (yes/no). Results led to a predetermined handling within the eCRF system, notifying medical and administrative staff in the MBS team to arrange appointments for the intervention.

Blinding

The study nurse collecting the outcome assessment was blinded to group allocation. Patients were asked in a telephone call from the study coordinator before the interview not to disclose their allocation group to the study nurse. Blinding failures related to outcome assessment were documented. The statistician responsible for data analysis was blinded to the allocation of patients. Care providers implementing the intervention or standard care were not informed about the group allocation of patients; however, there was no enforcement or assessment of blinding.

Statistical methods

Patients' characteristics and baseline measurements were reported using descriptive statistics (mean, mode, median, IQR and/or standard deviation). The evaluation of the impact of the MBS on outcomes was based on an intention-to-treat (ITT) approach. We tested the four different outcomes CRQ Mastery, CRQ QoL, IPOS and Zarit Burden Inventory (ZBI) step by step in this order. In case of a non-significant result in the hierarchical testing procedure in the primary efficacy analysis, the following test procedure is stopped and further analyses of the primary outcomes are performed as secondary analyses (31). This procedure requires no adjustment for multiple testing. We also report the exploratory analyses of secondary outcomes (NRS 24 h, HADS, and SPPB).

Missing data were treated with multiple imputation (MI), assuming missing values at random (32). Model-based MI included study group, stratification variables and baseline variables (endpoints, diagnosis, gender, age, household composition, Charlson's comorbidity index, Australian Karnofsky performance status). Carers were excluded from analyses if baseline values of the main endpoint (ZBI) were missing.

To assess the mean effect of the intervention on each outcome, separate multiple linear regression analyses compared the change score achieved (i.e. difference in the outcome's value at T1 and T0 respectively) between intervention and control group. The regression coefficient represents the mean effect that the intervention has on the changes in outcomes (i.e. change scores). The analyses were adjusted for the baseline score and the stratification variables (diagnosed with cancer (yes/no), having an informal carer (yes/no)). For the outcome ZBI, covariates considered were baseline values of the endpoint and cancer diagnosis.

Sensitivity analyses applied a worst-case imputation (CRQ mastery=1, CRQ QoL=1, IPOS=50). For the primary endpoint ZBI, sensitivity analyses were conducted using complete cases. Supplementary ITT analyses were conducted to assess the influence of potential confounders on the effect of the MBS regarding the four primary outcomes. Primary efficacy analyses were also conducted with the per-protocol study population who had not dropped out before T1 and showed no time- or therapy-based protocol deviations.

Main efficacy analyses as well as the secondary analyses, including the hierarchical testing and the order of the tested outcomes, were planned in advance and fully described in the study protocol and the statistical analysis plan, following the ICH Guidelines (33). Analyses were carried out using the software program R version 3.5.2 (2018-12-20).

Results

Participant flow

439 patients were screened, of whom 183 patients were included in the study (uptake: 41.7%). The first patient was randomized in March 2015. After reaching the required sample size, the last follow-up was in April 2019. Figure 1 shows the enrolment, allocation and follow-up of all patients until T1 assessment. Randomization allocated 92 and 91 patients to the intervention and control groups, respectively.

> Figure 1 Study flow diagram<

Median time between baseline assessment and T1 was 8.0 weeks (range: 6.3 to 11.0 weeks). The full CONSORT 2010 flow diagram is presented in Figure A1 (Appendix). The attrition rate of the study at T1 was 22/183=12.0%. Loss to follow-up clustered around the intervention in both groups (Figure A1,

Appendix). At T1, drop-out was (17/92 (18.5%)) in the intervention group compared with (5/91 (5.5%)) in the control group. At T2, drop-out in both groups was equal.

Reasons for drop-out are provided in Table A2 (Appendix).

Baseline data

Baseline characteristics of the study sample are shown in Tables 2 and 3. Randomization achieved a well-balanced sample.

Table 2 Demographics and baseline characteristics (given as n (%) or as mean (SD); median (IQR); (min; max))

		Total	Intervention group	Control group
Sex	Female	93/183 (50.82)	48/92 (52.17)	45/91 (49.45)
	Male	90/183 (49.18)	44/92 (47.83)	46/91 (50.55)
Age (years)		71.30 (8.59)	71.87 (8.90)	70.72 (8.28)
		71.78 (10.24)	72.67 (8.43)	71.24 (10.42)
		(39.48; 94.24)	(41.06; 94.24)	(39.48; 86.06)
Charlson comorbidity index		1.62 (1.68)	1.71 (1.54)	1.53 (1.82)
		1 (2); (0; 8)	1.5 (1); (0; 7)	1 (2); (0; 8)
Household composition	Living alone	71/183 (38.80)	36/92 (39.13)	35/91 (38.46)
	Living with partner/others	112/183 (61.20)	56/92 (60.87)	56/91 (61.54)
Is there a carer?	Yes	138/183 (75.41)	70/92 (76.09)	68/91 (74.73)
	No	45/183 (24.59)	22/92 (23.91)	23/91 (25.27)
Main diagnosis	COPD	115/183 (62.84)	54/92 (58.70)	61/91 (67.03)
	Chronic heart failure	14/183 (7.65)	7/92 (7.61)	7/91 (7.69)
	Interstitial lung disease	17/183 (9.29)	10/92 (10.87)	7/91 (7.69)
	Pulmonary hypertension	10/183 (5.46)	6/92 (6.52)	4/91 (4.40)
	Cancer	13/183 (7.10)	7/92 (7.61)	6/91 (6.59)
	Other	14/183 (7.65)	8/92 (8.70)	6/91 (6.59)
Long-term oxygen therapy	Yes	41/183	22/41 (53.66)	19/41 (46.35)
	No	142/183	70/142 (49.30)	72/142 (50.70)
Functional status (Australian Karnofsky performance status)	100 pts (no symptoms)	0/183 (0)	0/92 (0)	0/91 (0)
	90 pts (minor symptoms)	18/183 (9.84)	10/92 (10.87)	8/91 (8.79)
	80 pts (some symptoms)	75/183 (40.98)	34/92 (36.96)	41/91 (45.05)
	70 pts (unable normal activity)	59/183 (32.24)	30/92 (32.61)	29/91 (31.87)
	60 pts (occasional assistance)	24/183 (13.11)	13/92 (14.13)	11/91 (12.09)
	50 pts (considerable assistance)	6/183 (3.28)	5/92 (5.43)	1/91 (1.10)
	40 pts (bed 50% time)	1/183 (0.55)	0/92 (0)	1/91 (1.10)
Less than 40 pts	0/183 (0)	0/92 (0)	0/91 (0)	
Australian Karnofsky index	n (total/intervention/control)	3.61 (0.98)	3.66 (1.03)	3.55 (0.93)
	183/91/91	3 (1)	4 (1)	3 (1)
		(2; 7)	(2; 6)	(2; 7)
FVC [L] at T0	n (total/intervention/control)	60.57 (21.81)	61.64 (21.68)	59.49 (22.01)
	175/88/87	57 (33)	58 (35.5)	56 (32)
		(12; 119)	(16; 109)	(12; 119)
FEV1 [L] at T0	n (total/intervention/control)	1.24 (0.65)	1.27 (0.66)	1.21 (0.65)
	182/92/90	1.15 (0.95)	1.16 (0.97)	1.11 (0.94)
		(0.22; 3.42)	(0.29; 3.01)	(0.22; 3.42)
FEV1/FVC [%] at T0	n (total/intervention/control)	65.93 (19.98)	68.15 (20.2)	63.69 (19.6)
	175/88/87	68 (34)	71 (29.5)	64 (32)
		(24; 99)	(24; 99)	(26; 99)
SpO ₂ % at T0 in patients w/o	n (total/intervention/control)	95.05 (2.25)	95.16 (2.31)	94.94 (2.20)
	141/70/71	96 (3)	96 (3)	96 (4)

LTOT	(87; 98)	(88; 98)	(87; 98)
SpO ₂ % at T0 in n (total/intervention/control)	94.35 (4.66)	94.86 (3.36)	93.72 (5.93)
patients with 40/22/18	96 (4)	95.5 (5)	96 (3)
LTOT	(80; 99)	(85; 99)	(80; 99)

Abbreviations: SD: standard deviation; IQR: interquartile range; COPD: chronic obstructive pulmonary disease; FVC: forced vital capacity; FEV1 [L] forced expiratory volume (in litres) in 1 second; SpO₂: pulse oximetric saturation; w/o=without; LTOT: long-term oxygen therapy

Table 3 Outcome measurements at T0 (given as mean (SD); median (IQR); (min; max))

	Total	Intervention group	Control group	n
CRQ Mastery	4.09 (1.20) 4.25 (1.75) (1; 7)	4.17 (1.25) 4.25 (2.06) (1; 7)	4.00 (1.15) 4.25 (1.50) (1; 6.25)	183/92/91
CRQ QoL	3.72 (0.82) 3.83 (1.10) (1.65; 5.8)	3.77 (0.80) 3.73 (1.01) (1.8; 5.8)	3.67 (0.84) 3.85 (1.22) (1.65; 5.45)	183/92/91
CRQ Dyspnoea	2.81 (0.71) 2.8 (0.8) (1; 4.6)	2.88 (0.65) 2.8 (0.85) (1.4; 4.6)	2.74 (0.77) 2.8 (1) (1; 4.6)	183/92/91
CRQ Fatigue	3.65 (1.06) 3.5 (1.5) (1.25; 6.5)	3.69 (1.07) 3.5 (1.25) (1.25; 6.5)	3.6 (1.06) 3.75 (1.5) (1.5; 6.5)	183/92/91
CRQ Emotional function	4.19 (1.14) 4.14 (1.57) (1.86; 6.57)	4.22 (1.11) 4.29 (1.43) (1.86; 6.57)	4.16 (1.17) 4.14 (1.71) (1.86; 6.57)	183/92/91
IPOS Sum score	22.79 (8.27) 22 (12) (4; 43)	22.97 (7.83) 22 (10) (4; 42)	22.6 (8.74) 21 (12.5) (5; 43)	183/92/91
IPOS Symptoms score	12.59 (5.17) 12 (7) (2; 26)	12.8 (5.15) 13 (7) (2; 26)	12.37 (5.20) 11 (8) (2; 24)	183/92/91
IPOS Communication score	3.84 (2.59) 4 (3) (0; 12)	3.91 (2.5) 4 (3) (0; 11)	3.77 (2.68) 4 (3) (0; 12)	183/92/91
IPOS Emotional score	6.36 (3.35) 6 (5) (0; 15)	6.25 (3.24) 6 (4.25) (0; 15)	6.46 (3.48) 6 (5) (0; 15)	183/92/91
ZBI Sum score	21.35 (12.86) 22 (19) (0; 56)	20.77 (13.58) 21.5 (21.5) (0; 56)	21.85 (12.32) 22 (16) (0; 54)	95/44/51
NRS on average in the last 24 h	5.36 (1.79) 5 (3) (1; 10)	5.04 (1.75) 5 (2) (1; 8)	5.67 (1.78) 6 (2) (1; 10)	183/92/91
NRS at rest	2.81 (1.74) 2 (2.5) (1; 10)	2.63 (1.59) 2 (2.25) (1; 8)	2.99 (1.86) 2 (2) (1; 10)	183/92/91
NRS on exertion	7.42 (1.87) 8 (2) (1; 10)	7.08 (1.86) 7.5 (2) (2; 10)	7.76 (1.83) 8 (2) (1; 10)	183/92/91
HADS Anxiety	6.93 (3.85) 7 (6) (0; 17)	6.87 (3.8) 7 (6) (0; 15)	6.99 (3.92) 7 (5.5) (0; 17)	183/92/91
HADS Depression	7.92 (4.24) 8 (6) (1; 21)	7.78 (3.89) 8 (6) (1; 16)	8.07 (4.59) 8 (6) (1; 21)	183/92/91
EQ-5D-5L	0.86 (0.19) (0.15; 1) 0.94 (0.18)	0.86 (0.19) (0.26; 1) 0.92 (0.20)	0.87 (0.19) (0.15; 1) 0.94 (0.16)	183/92/91
EQ VAS	59.27 (17.91) (10; 100) 60 (20)	59.57 (16.08) (19; 90) 60 (20)	58.98 (19.67) (10; 100) 60 (30)	183/92/91

	Total	Intervention group	Control group	n
SPPB Total score	7.75 (2.8) 8 (2) (0; 12)	7.75 (2.93) 8 (2.25) (0; 12)	7.74 (2.68) 8 (2.75) (0; 12)	182/92/90
SPPB Balance	3.4 (1.16) 4 (1) (0; 4)	3.45 (1.19) 4 (0.25) (0; 4)	3.36 (1.13) 4 (1) (0; 4)	182/92/90
SPPB Gait speed	3.04 (1.12) 3 (1) (0; 4)	3.01 (1.21) 3 (1) (0; 4)	3.07 (1.03) 3 (1) (0; 4)	182/92/90
SPPB Chair stand	1.31 (1.14) 1 (1) (0; 4)	1.29 (1.16) 1 (1.25) (0; 4)	1.32 (1.12) 1 (1) (0; 4)	182/92/90

Abbreviations: SD: standard deviation; IQR: interquartile range; CRQ: Chronic Respiratory Disease Questionnaire; IPOS: Integrated Palliative care Outcome Scale; ZBI: Zarit Burden Inventory; NRS: numerical rating scales; HADS: Hospital Anxiety and Depression Scale; EQ5D-5L: generic health status instrument by the EuroQol Group with 5 dimensions and 5 levels; VAS: EuroQol visual analogue scale; SPPB: Short Physical Performance Battery

Numbers analysed

The complete study population (n=183) entered efficacy analysis for the primary outcomes. We observed no single missing items in the primary outcomes CRQ Mastery, CRQ QoL and IPOS in participants continuing the study. All missing values in these outcomes resulted from drop-out of the respective study participants. For details on time- and therapy-based protocol deviations, see Figure 1. Blinding failed in some instances because of patients' unmasking their allocation or logistical defects (11/161 at T1, 6.8%). Per-protocol analyses were conducted with 153 patients; other sensitivity and supplementary analyses were conducted with the complete study population.

Outcomes

The main analysis (ITT with MI) showed a statistically significant improvement in CRQ Mastery of 0.367 [95% CI: 0.065; 0.669] score units at T1 for the early intervention group (see Table 4). For the endpoint CRQ QoL, there was a statistically significant improvement of 0.226 [95% CI: 0.012; 0.440]. We could not detect significant changes in IPOS. Exploratory analyses with the outcomes ZBI, NRS, HADS Anxiety, HADS Depression and SPPB sum score could only identify small effects of the intervention that were not statistically significant.

Table 4 Results of the primary and secondary analyses

Adjusted	Standard	95% CI	P value†
-----------------	-----------------	---------------	-----------------

	regression coefficient*	error		
CRQ Mastery‡	0.367	0.154	[0.065; 0.669]	0.017
CRQ QoL‡	0.226	0.109	[0.012; 0.440]	0.037
IPOS	-1.864	1.116	[-4.051; 0.323]	0.095§
ZBI	-2.533	2.13	[-6.708; 1.642]	–
NRS (average 24 h)	-0.550	0.283	[-1.105; 0.005]	–
HADS Anxiety	-0.407	0.462	[-1.313; 0.499]	–
HADS Depression	-0.583	0.427	[-1.420; 0.254]	–
SPPB Sum score	-0.095	0.346	[-0.773; 0.583]	–

*Adjusted regression coefficients (adjusted for the CRQ Mastery Score at T0, cancer status and the presence of an informal carer) of the multiple linear regression analyses on the change scores show the intervention effects for the main outcomes

†Wald tests of multiple linear regression models on change scores adjusted for the CRQ Mastery Score at T0, cancer status and the presence of a carer

‡Higher value of CRQ indicates better outcome of the patients

§Non-significant result, in the hierarchy of testing consequently no further tests of significance

For CRQ Mastery, CRQ QoL and IPOS, baseline values had a significant impact on the change scores. The higher the score at T0 (indicating less breathlessness and better QoL), the smaller the differences at T1 (results not shown). Stratification variables controlled for in the analysis had no significant effect except for HADS Depression, where having an informal carer was associated with less burden (-1.255; 95% CI: -2.231; -0.279).

Regarding the primary outcomes, the results of the supplementary and per-protocol analyses supported the results of the main analyses. The sensitivity analyses using worst-score imputation showed non-significant effect estimates for all primary outcomes (Tables A3–A5 (Appendix)).

Adverse events

Of 156 adverse events recorded up to T1, n=72 (46%) were reported by the intervention group, and two of them (3%) were related to the intervention. Both were minor and of short duration, i.e. side-effects of medication prescribed by the MBS (subsequently stopped) and a temporary skin reaction following an allergy test recommended by the MBS.

Discussion

The MBS constitutes a novel service in Germany, providing a multi-professional, symptom-based short-term intervention for people experiencing poor health-related QoL caused by breathlessness in advanced stages of disease. Led by palliative care specialists, in cooperation with respiratory specialists and specialized respiratory physiotherapy lasting 5–6 weeks, the MBS is characterized by its holistic treatment approach and self-management support.

This study presents the results of a randomized controlled fast track trial testing the effectiveness of the intervention. We found statistically significant improvements in the primary endpoints CRQ Mastery and CRQ QoL over standard care, providing evidence that the intervention succeeded in reducing the burden caused by chronic breathlessness. The findings demonstrate that patients with diverse advanced diseases at different stages benefit from this add-on to usual care in the German healthcare system, which emphasizes a coordinated, multiprofessional and interdisciplinary approach to care (34). The new MBS, which is anchored in a variety of medical specialities, contributes to high-quality healthcare provision beyond treatment of the underlying disease. This underlines the call for chronic breathlessness being defined as a ‘syndrome’, delineating systematic clinical enquiry and targeted intervention (2).

Locating findings in the literature

The observed difference of 0.367 [95% CI: 0.065; 0.669] in the change score for CRQ Mastery is in line with the findings of three previous studies examining breathlessness support services. Higginson et al. found a difference between intervention and control groups of 0.58 [95% CI: 0.01, 1.15] comparing absolute measurements at 6 weeks, using a two-sided Student’s test for independent samples (20). Farquhar et al. reported a difference of 0.43 [95% CI: –0.02, 0.89] at 4 weeks in their study of patients with advanced non-malignant disease, adjusting for baseline values (35). In a study of patients with advanced cancer, CRQ Mastery scores adjusted for baseline values improved by 0.20 [95% CI: –0.35, 0.76] at 2 weeks (16). The last two studies had smaller sample sizes and results were not statistically significant but support a consistently positive impact of the intervention. In comparison, our results refer to an observation period of 8 weeks.

Adding the data of our study to a recently conducted meta-analysis of five trials (n=420) the overall body of evidence assessing the effectiveness of breathlessness support services increases considerably, yielding a greater precision of effect estimates (36, 37). The outcome measurements chosen in our study are widely used in studies on the effectiveness of interventions for chronic breathlessness in advanced disease and reflect the multidimensional effects of chronic breathlessness (38, 39). Notably, the CRQ Mastery domain relates to important psychological

outcomes, such as appraisal and a feeling of control whereas other measures capture physical changes (NRS) and psychological distress (HADS)(40, 41).

Strengths and limitations of this study

The strengths of this study are the large sample size and the heterogeneity of patients participating, thus approximating real-world conditions to a greater extent than previous studies. As a potential limitation, an increased awareness of breathlessness management over the long duration of our study could have affected our findings. However, there was no indication of improved services or any change in standard care over the time period. Furthermore, within the scope of the MBS, offering consultation with an in-house respiratory physician was provided as default at first and later switched to optional. This did not change the quality of care and, for this reason, there was no need to change the analysis. Limitations are that blinding of study participants was not possible because of the nature of the intervention, the imbalance in drop-out rates at T1 and the small effect size, discussed further in the following.

The CRQ mastery change score did not reach the threshold of the minimum clinically important difference (MCID) of 0.5, which is reported most frequently although some lower estimations can be found in the literature (42). However, this threshold lies within the confidence interval of the estimated effect in our study. The small effect size may partly result from bias introduced by the Hawthorne effect, where enrolment in the trial also affects expectations in the control group, which the CRQ may have picked up. Moreover, trial populations in the studies setting an MCID for the CRQ may not be comparable to our study. Farquhar refers to 'the smaller margins of benefit and the greater spread of benefits in palliative care interventions, with a cumulative effect from the addition of several smaller quantitative outcome benefits' (35). Although the results of our trial cannot establish clinical significance of the intervention effect, they signal the need for further investigation regarding factors that may impact the size of the intervention effect.

Trials with outcome measures that reflect subjective experience are particularly susceptible to overestimating treatment effects unless blinding procedures are used (43). However, practical difficulties with blinding were substantial, particularly because outcome assessment took place in participants' homes. Blinding of study participants was not possible on account of the nature of the intervention. This may have affected reporting of outcomes by patients and may have led to larger than expected differences in change scores between the intervention and control groups.

Attrition rates in our trial (21.9%) were lower than the 25% assumed in the power calculation. Drop-out was highest in the subgroup with cancer similar to previous palliative care trials (44). Over the

course of the study, drop-out rates between intervention and control groups were balanced (20 participants in both groups). However, at the T1 measurement, the intervention group shows a higher proportion of patients who were lost to follow-up, possibly caused by the burden relating to participating in the multi-component intervention. Importantly, comparison of the two groups at baseline shows that they were well-balanced regarding stratification and baseline variables.

Conclusions

Improvements in mastery of breathlessness and in QoL in patients with advanced disease were previously reported for UK patients. Our study confirmed these for patients in the German healthcare system, where direct access to respiratory specialists is provided. This emphasizes the importance of a holistic treatment approach combined with self-management support, as well as the feasibility of implementing a short-term intervention that could be expanded more equitably across the German health system (45, 46). With pooled data across trials, improvements should be analysed for different subgroups. Further analysis of our data, drawing on findings from qualitative and mixed methods studies conducted alongside the efficacy trial will provide a deeper understanding of intervention effectiveness.

Other information

ClinicalTrials.gov Identifier: NCT02622412

We first submitted the record to clinicaltrials.gov on 31 October 2015, 7 months after the first patient had been enrolled. At that time, we had recruited n=32 patients (17% of the total). The submission was posted on 4 December 2015. The delay in registration was caused by the heavy workload at the beginning of the trial. We had obtained approval from the ethics committee on 8 January 2015. In July 2015, we dropped an inclusion criterion (requiring mMRC \geq 2 for inclusion of patients) in an amendment to the study protocol. At that time, we had become aware that we had not intended to exclude patients with an intermittent burden of breathlessness. No further changes to inclusion and exclusion criteria were made throughout the study.

Support statement: The German Federal Ministry of Education and Research funded this study (Reference numbers: 01GY1331).

References

1. Gysels MH, Higginson IJ. The lived experience of breathlessness and its implications for care: a qualitative comparison in cancer, COPD, heart failure and MND. *BMC Palliat Care*. 2011;10:15.

2. Johnson MJ, Yorke J, Hansen-Flaschen J, Lansing R, Ekstrom M, Similowski T, et al. Towards an expert consensus to delineate a clinical syndrome of chronic breathlessness. *Eur Respir J*. 2017;49(5).
3. Hutchinson A, Barclay-Klinge N, Galvin K, Johnson MJ. Living with breathlessness: a systematic literature review and qualitative synthesis. *Eur Respir J*. 2018;51(2).
4. Parshall MB, Schwartzstein RM, Adams L, Banzett RB, Manning HL, Bourbeau J, et al. An official American Thoracic Society statement: update on the mechanisms, assessment, and management of dyspnea. *Am J Respir Crit Care Med*. 2012;185(4):435-52.
5. Moens K, Higginson IJ, Harding R, Euro I, Euro I. Are There Differences in the Prevalence of Palliative Care-Related Problems in People Living With Advanced Cancer and Eight Non-Cancer Conditions? A Systematic Review. *J Pain Symptom Manage*. 2014;48(4):660-77.
6. Smith AK, Currow DC, Abernethy AP, Johnson MJ, Miao Y, Boscardin WJ, et al. Prevalence and Outcomes of Breathlessness in Older Adults: A National Population Study. *J Am Geriatr Soc*. 2016;64(10):2035-41.
7. Bausewein C, Booth S, Gysels M, Kuhnback R, Haberland B, Higginson IJ. Understanding breathlessness: cross-sectional comparison of symptom burden and palliative care needs in chronic obstructive pulmonary disease and cancer. *J Palliat Med*. 2010;13(9):1109-18.
8. Sundh J, Ekstrom M. Persistent disabling breathlessness in chronic obstructive pulmonary disease. *Int J Chron Obstruct Pulmon Dis*. 2016;11:2805-12.
9. Yorke J, Deaton C, Campbell M, McGowen L, Sephton P, Kiely DG, et al. Symptom severity and its effect on health-related quality of life over time in patients with pulmonary hypertension: a multisite longitudinal cohort study. *BMJ Open Respir Res*. 2018;5(1):e000263.
10. Currow DC, Chang S, Reddel HK, Kochovska S, Ferreira D, Kinchin I, et al. Breathlessness, Anxiety, Depression, and Function-The BAD-F Study: A Cross-Sectional and Population Prevalence Study in Adults. *J Pain Symptom Manage*. 2020;59(2):197-205 e2.
11. Currow DC, Dal Grande E, Ferreira D, Johnson MJ, McCaffrey N, Ekstrom M. Chronic breathlessness associated with poorer physical and mental health-related quality of life (SF-12) across all adult age groups. *Thorax*. 2017;72(12):1151-3.
12. Hutchinson A, Pickering A, Williams P, Bland JM, Johnson MJ. Breathlessness and presentation to the emergency department: a survey and clinical record review. *BMC Pulm Med*. 2017;17(1):53.
13. Kelly AM, Keijzers G, Klim S, Graham CA, Craig S, Kuan WS, et al. An Observational Study of Dyspnea in Emergency Departments: The Asia, Australia, and New Zealand Dyspnea in Emergency Departments Study (AANZDEM). *Acad Emerg Med*. 2017;24(3):328-36.
14. Dzingina MD, Reilly CC, Bausewein C, Jolley CJ, Moxham J, McCrone P, et al. Variations in the cost of formal and informal health care for patients with advanced chronic disease and refractory breathlessness: A cross-sectional secondary analysis. *Palliat Med*. 2017;31(4):369-77.
15. Spagnolo P, Balestro E, Aliberti S, Cocconcelli E, Biondini D, Casa GD, et al. Pulmonary fibrosis secondary to COVID-19: a call to arms? *The Lancet Respiratory medicine*. 2020.
16. Farquhar MC, Prevost A, McCrone P, Brafman-Price B, Bentley A, Higginson IJ, et al. Is a specialist breathlessness service more effective and cost-effective for patients with advanced cancer and their carers than standard care? Findings of a mixed-method randomised controlled trial. *BMC Med*. 2014;12(1):194.
17. Booth S, Moffat C, Farquhar M, Higginson IJ, Burkin J. Developing a breathlessness intervention service for patients with palliative and supportive care needs, irrespective of diagnosis. *J Palliat Care*. 2011;27(1):28-36.
18. Higginson I, Bausewein C, Reilly C, Gao W, Gysels M, Dzingina M, et al. An integrated palliative and respiratory care service for patients with advanced disease and refractory breathlessness: a randomised controlled trial. *Lancet Respir Med*. 2014.
19. Schulz KF, Altman DG, Moher D. CONSORT 2010 statement: Updated guidelines for reporting parallel group randomised trials. *J Pharmacol Pharmacother*. 2010;1(2):100-7.

20. Calvert M, Brundage M, Jacobsen PB, Schunemann HJ, Efficace F. The CONSORT Patient-Reported Outcome (PRO) extension: implications for clinical trials and practice. *Health Qual Life Outcomes*. 2013;11:184.
21. Boutron I, Altman DG, Moher D, Schulz KF, Ravaud P, Group CN. CONSORT Statement for Randomized Trials of Nonpharmacologic Treatments: A 2017 Update and a CONSORT Extension for Nonpharmacologic Trial Abstracts. *Ann Intern Med*. 2017;167(1):40-7.
22. Hamasaki T, Evans SR, Asakura K. Design, data monitoring, and analysis of clinical trials with co-primary endpoints: A review. *J Biopharm Stat*. 2018;28(1):28-51.
23. US_Food_and_Drug_Administration. Multiple endpoints in clinical trials: guidance for industry (Draft)
<https://www.fda.gov/downloads/Drugs/GuidanceComplianceRegulatoryInformation/Guidances/UCM536750.pdf>.: Accessed October 15, 2020; 2017.
24. Murtagh FE, Ramsenthaler C, Firth A, Groeneveld EI, Lovell N, Simon ST, et al. A brief, patient- and proxy-reported outcome measure in advanced illness: Validity, reliability and responsiveness of the Integrated Palliative care Outcome Scale (IPOS). *Palliat Med*. 2019;33(8):1045-57.
25. Higginson IJ, Gao W. Caregiver assessment of patients with advanced cancer: concordance with patients, effect of burden and positivity. *Health Qual Life Outcomes*. 2008;6:42.
26. Zarit SH, Todd PA, Zarit JM. Subjective burden of husbands and wives as caregivers: a longitudinal study. *Gerontologist*. 1986;26(3):260-6.
27. Zigmond AS, Snaith RP. The hospital anxiety and depression scale. *Acta Psychiatr Scand*. 1983;67(6):361-70.
28. Guralnik JM, Simonsick EM, Ferrucci L, Glynn RJ, Berkman LF, Blazer DG, et al. A short physical performance battery assessing lower extremity function: association with self-reported disability and prediction of mortality and nursing home admission. *J Gerontol*. 1994;49(2):M85-94.
29. Ludwig K, Graf von der Schulenburg JM, Greiner W. German Value Set for the EQ-5D-5L. *Pharmacoeconomics*. 2018;36(6):663-74.
30. Schunemann HJ, Puhan M, Goldstein R, Jaeschke R, Guyatt GH. Measurement properties and interpretability of the Chronic respiratory disease questionnaire (CRQ). *COPD*. 2005;2(1):81-9.
31. Neuhauser M. How to deal with multiple endpoints in clinical trials. *Fundam Clin Pharmacol*. 2006;20(6):515-23.
32. Rubin DB. *Multiple Imputation for Nonresponse in Surveys*. New York: John Wiley & Sons, Inc. ; 1987.
33. ICH. ICH Harmonised Tripartite Guideline. Statistical principles for clinical trials. International Conference on Harmonisation E9 Expert Working Group. *Stat Med*. 1999;18(15):1905-42.
34. Schunk M, Schulze F, Bausewein C. What Constitutes Good Health Care for Patients with Breathlessness? Perspectives of Patients, Caregivers, and Health Care Professionals. *J Palliat Med*. 2019;22(6):656-62.
35. Farquhar MC, Prevost AT, McCrone P, Brafman-Price B, Bentley A, Higginson IJ, et al. The clinical and cost effectiveness of a Breathlessness Intervention Service for patients with advanced non-malignant disease and their informal carers: mixed findings of a mixed method randomised controlled trial. *Trials*. 2016;17:185.
36. Maddocks M, Brighton LJ, Farquhar M, Booth S, Miller S, Klass L, et al. Holistic services for people with advanced disease and chronic or refractory breathlessness: a mixed-methods evidence synthesis. Southampton (UK)2019.
37. Brighton LJ, Miller S, Farquhar M, Booth S, Yi D, Gao W, et al. Holistic services for people with advanced disease and chronic breathlessness: a systematic review and meta-analysis. *Thorax*. 2019;74(3):270-81.
38. Bausewein C, Farquhar M, Booth S, Gysels M, Higginson IJ. Measurement of breathlessness in advanced disease: a systematic review. *Respir Med*. 2007;101(3):399-410.
39. Similowski T, Serresse L. Lessons from negative dyspnoea studies: arguments for the multidimensional evaluation of multidirectional therapeutic approaches. *Eur Respir J*. 2019;53(1).
40. Guyatt GH, Berman LB, Townsend M, Pugsley SO, Chambers LW. A measure of quality of life for clinical trials in chronic lung disease. *Thorax*. 1987;42(10):773-8.

41. Lovell N, Etkind SN, Bajwah S, Maddocks M, Higginson IJ. To What Extent Do the NRS and CRQ Capture Change in Patients' Experience of Breathlessness in Advanced Disease? Findings From a Mixed-Methods Double-Blind Randomized Feasibility Trial. *J Pain Symptom Manage*. 2019;58(3):369-81 e7.
42. Chauvin A, Rupley L, Meyers K, Johnson K, Eason J. Outcomes in Cardiopulmonary Physical Therapy: Chronic Respiratory Disease Questionnaire (CRQ). *Cardiopulm Phys Ther J*. 2008;19(2):61-7.
43. Balk EM, Bonis PA, Moskowitz H, Schmid CH, Ioannidis JP, Wang C, et al. Correlation of quality measures with estimates of treatment effect in meta-analyses of randomized controlled trials. *JAMA*. 2002;287(22):2973-82.
44. Johnson MJ, Kanaan M, Richardson G, Nabb S, Torgerson D, English A, et al. A randomised controlled trial of three or one breathing technique training sessions for breathlessness in people with malignant lung disease. *BMC Med*. 2015;13:213.
45. Bausewein C, Schumacher P, Bolzani A. Integrated breathlessness services for people with chronic conditions. *Curr Opin Support Palliat Care*. 2018;12(3):227-31.
46. Smallwood N, Thompson M, Warrender-Sparkes M, Eastman P, Le B, Irving L, et al. Integrated respiratory and palliative care may improve outcomes in advanced lung disease. *ERJ Open Res*. 2018;4(1).

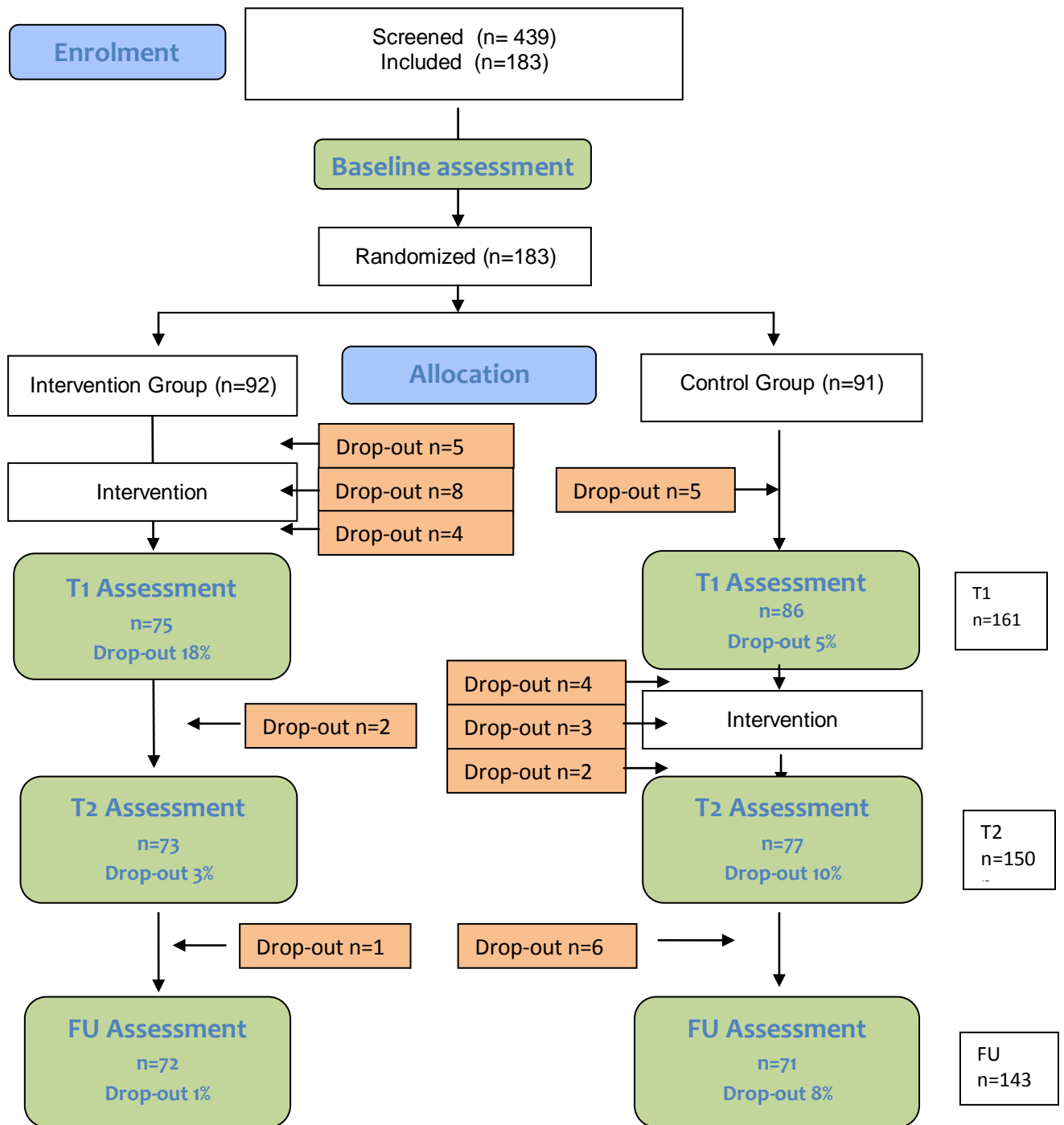
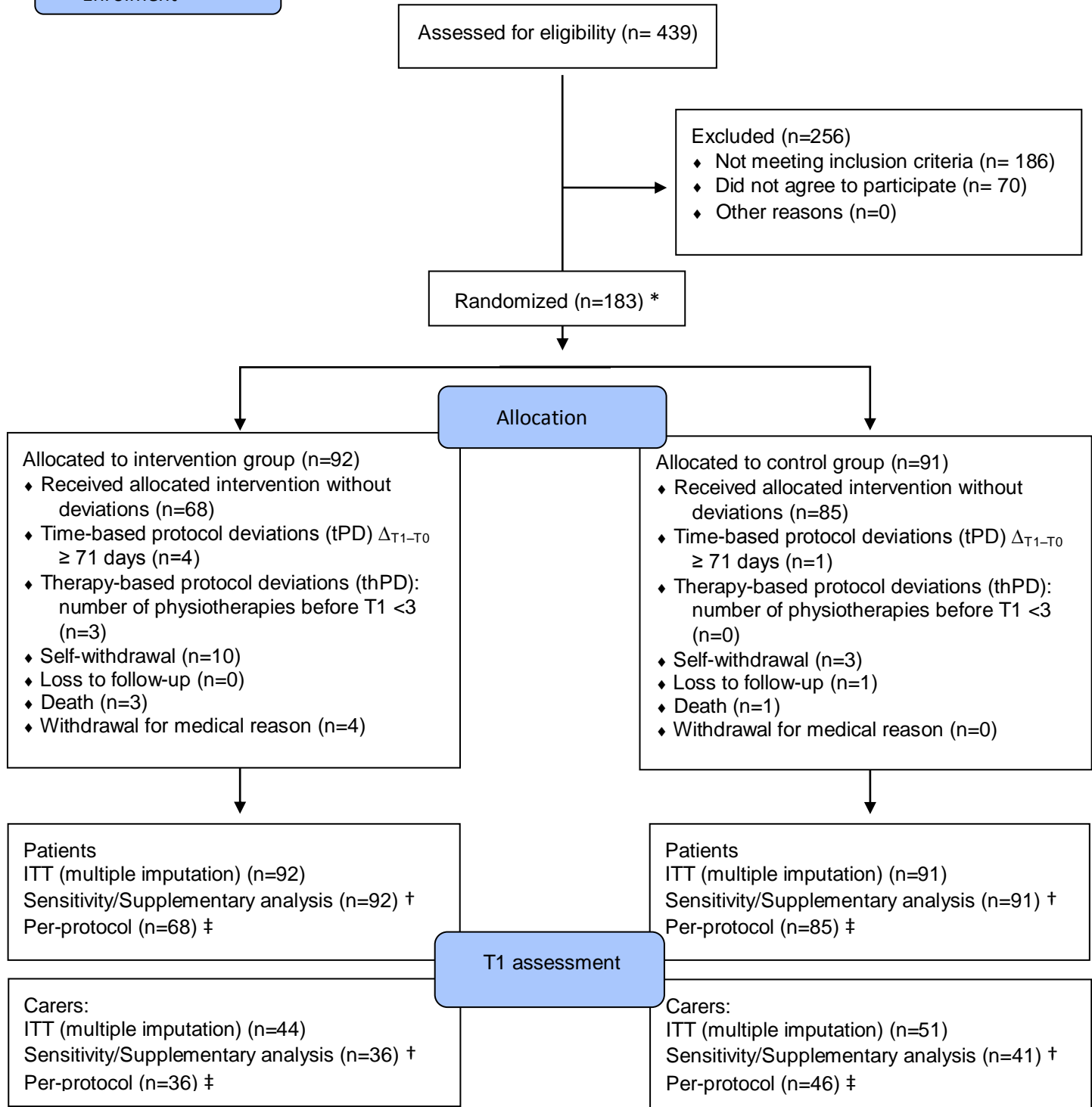


Figure 1: Study Flow Diagram

Appendix

Enrolment



*One patient initially randomized had to be retrospectively excluded because of not fulfilling the inclusion criteria.

† For the sensitivity analysis, CRQ Mastery, CRQ QoL and IPOS sum score are based on the intention-to-treat population with a worst case imputation, i.e. missing values are imputed by the worst possible score value. Supplementary analyses are based on the intention-to-treat population, employing a wider range of covariables and potential confounders. For ZBI, sensitivity/supplementary analyses are performed using complete cases.

‡ For the per-protocol analysis, patients (and carers of patients) with time-based protocol deviations ($\Delta_{T1-T0} \geq 71$ days), therapy-based protocol deviations (number of physiotherapies at time of the interview $T1 < 3$) and T1 drop-outs were excluded.

Figure A1: CONSORT 2010 flow diagram

Table A2: Drop-out

	Study arm	Time	Reason
	Intervention group (IG); control group (CG)	Between T0 and T1=vT1 Between T1 and T2=vT2 Between T2 and FU=vFU vInt =preceding intervention wInt =during intervention nInt =after intervention	
1	IG	vT1wInt	Patient's health deteriorated due to underlying condition → consent withdrawn by patient 'too burdened'
2	CG	vT2vInt	Patient's health deteriorated due to underlying condition → exclusion for medical considerations
3	IG	vT1vInt	Patient's health deteriorated due to underlying condition → consent withdrawn by patient 'too burdened'
4	CG	vT1vInt	Patient's health deteriorated due to underlying condition → consent withdrawn by patient 'too burdened'
5	CG	vT2nInt	Death
6	CG	vT1vInt	Patient's health deteriorated due to underlying condition → consent withdrawn by patient 'too burdened'
7	IG	vT1wInt	Death
8	CG	vT2wInt	Patient's health deteriorated due to underlying condition → consent withdrawn by patient 'too burdened'
9	IG	vT1wInt	Patient's health deteriorated due to underlying condition → exclusion for medical considerations
10	CG	vFU	Patient withdraws consent 'lost interest because intervention did not help'
11	IG	vT1wInt	Death
12	IG	vT1vInt	Patient's health deteriorated due to underlying condition → consent withdrawn by patient 'too burdened'
13	IG	vT2nInt	Patient's health deteriorated due to underlying condition → consent withdrawn by patient 'too burdened'
14	CG	vT2wInt	Death
15	CG	vT1vInt	Patient withdraws consent 'lost interest'

16	IG	vT2nInt	Death
17	CG	vT2vInt	Patient's health deteriorated due to underlying condition → consent withdrawn by patient 'too burdened'
18	CG	vT2vInt	Patient withdraws consent 'lost interest'
19	IG	vT1vInt	Patient's health deteriorated due to underlying condition → consent withdrawn by patient 'too burdened'
20	IG	vT1vInt	Patient's health deteriorated due to underlying condition → exclusion for medical considerations
21	IG	vT1nInt	Patient's health deteriorated due to underlying condition → consent withdrawn by patient 'too burdened'
22	IG	vT1nInt	Patient withdraws consent 'lost interest'
23	CG	vT1vInt	Death
24	CG	vFU	Death
25	IG	vT1wInt	Patient's health deteriorated due to underlying condition → exclusion for medical considerations
26	IG	vT1nInt	Patient's health deteriorated due to underlying condition → consent withdrawn by patient 'too burdened'
27	CG	vFU	Death
28	CG	vFU	Death
29	IG	vT1vInt	Patient's health deteriorated due to underlying condition → exclusion for medical considerations
30	CG	vFU	Patient's health deteriorated due to underlying condition → consent withdrawn by patient 'too burdened'
31	IG	vT1wInt	Patient withdraws consent 'lost interest'
32	CG	vT2wInt	Patient withdraws consent 'lost interest because of co-payments for physio'
33	IG	vT1wInt	Death
34	IG	vT1wInt	Patient withdraws consent 'lost interest because of holiday plans'
35	IG	vT1wInt	Patient withdraws consent 'lost interest because intervention did not help'
36	CG	vFU	Patient withdraws consent 'lost interest'
37	CG	vT2nInt	Patient withdraws consent 'lost interest because of concerns regarding data protection'
38	CG	vT1vInt	Could no longer be contacted → exclusion due to organizational considerations

39	CG	nT1vInt	Patient withdraws consent 'lost interest'
40	IG	nT2nInt	Patient's health deteriorated due to underlying condition → exclusion for medical considerations

Table A3 Results of the per-protocol analysis*

	Adjusted regression coefficient †	Standard error	95% CI
CRQ Mastery‡	0.42	0.15	[0.13; 0.72]
CRQ QoL‡	0.21	0.10	[0.01; 0.41]
IPOS	-1.98	1.05	[-4.04; 0.08]
ZBI	-2.67	2.13	[-6.03; 0.70]

*n=153/68/85 (ZBI n=82/36/46). For the per-protocol analysis, patients (and carers of patients) with time-based protocol deviations ((tPD) $\Delta T1-T0 \geq 71$ days), therapy-based protocol deviations (number of physiotherapies at time of the interview $T1 < 3$) and T1 drop-outs were excluded.

† Multiple linear regression models on change scores adjusted for the CRQ Mastery Score at T0, cancer status and the presence of a carer

‡ Higher value of CRQ indicates better outcome of the patients

Table A4 Results of the sensitivity analysis*

	Adjusted regression coefficient †	Standard error	95% CI
CRQ Mastery‡	-0.16	0.21	[-0.58; 0.26]
CRQ QoL‡	-0.22	0.17	[-0.55; 0.11]
IPOS	1.84	1.62	[-1.34 5.02]
ZBI	-2.13	1.39	[-4.86; 0.60]

*n=183/92/91 (ZBI n=75/36/41). For sensitivity analysis, CRQ Mastery, CRQ QoL and IPOS sum score are based on the intention-to-treat population with a worst case imputation, i.e. missing values are imputed by the worst possible score value. For ZBI, sensitivity analysis is performed using complete cases

† Multiple linear regression models on change scores adjusted for the CRQ Mastery Score at T0, cancer status and the presence of a carer

‡ Higher value of CRQ indicates better outcome of the patients

Table A5 Results of the supplementary analysis*

	Adjusted regression coefficient §	Standard error	95% CI
CRQ Mastery‡	0.34	0.15	[0.03; 0.64]
CRQ QoL‡	0.23	0.11	[0.02; 0.45]
IPOS	-1.58	1.13	[-3.78; 0.63]
ZBI	-2.89	2.42	[-7.62; 1.85]

* n=183/92/91(ZBI n=75/36/41). Supplementary analyses were based on the intention-to-treat population
† Multiple linear regression models on change scores adjusted for the CRQ Mastery Score at T0, cancer status and the presence of a carer with consideration of a wider range of covariables and potential confounders.
‡ Higher value of CRQ indicates better outcome of the patients