



Early View

Original article

Real world effects of COPD medications: a cohort study with validation against RCT results

Kevin Wing, Elizabeth Williamson, James R Carpenter, Lesley Wise, Sebastian Schneeweiss, Liam Smeeth, Jennifer K Quint, Ian Douglas

Please cite this article as: Wing K, Williamson E, Carpenter JR, *et al.* Real world effects of COPD medications: a cohort study with validation against RCT results. *Eur Respir J* 2020; in press (<https://doi.org/10.1183/13993003.01586-2020>).

This manuscript has recently been accepted for publication in the *European Respiratory Journal*. It is published here in its accepted form prior to copyediting and typesetting by our production team. After these production processes are complete and the authors have approved the resulting proofs, the article will move to the latest issue of the ERJ online.

Copyright ©ERS 2020

TITLE PAGE

Title: Real world effects of COPD medications: a cohort study with validation against RCT results

Authors:

Kevin Wing^{1*}

Elizabeth Williamson²

James R Carpenter²

Lesley Wise¹

Sebastian Schneeweiss^{3,4}

Liam Smeeth¹

Jennifer K Quint⁵

Ian Douglas¹

¹Department of Non-communicable Disease Epidemiology, Faculty of Epidemiology and Population Health, London School of Hygiene and Tropical Medicine, London, UK

²Department of Medical Statistics, Faculty of Epidemiology and Population Health, London School of Hygiene and Tropical Medicine, London, UK

³Department of Epidemiology, Harvard Medical School.

⁴Division of Pharmacoepidemiology and Pharmacoeconomics, Department of Medicine, Brigham & Women's Hospital

⁵National Heart and Lung Institute, Imperial College London, London, United Kingdom

***Submitting and corresponding author:** Kevin Wing (kevin.wing@lshtm.ac.uk), London School of Hygiene and Tropical Medicine, Keppel Street, London WC1E 7HT. Tel: +44 20 7636 8636, Fax: +44 20 7436 5389

Word count (not including title, abstract, acknowledgement, references, tables, and figure legends): 3000

Take home message

In COPD patients selected from real-world data based on similarity to participants of the TORCH RCT, non-interventional methods generated comparable results to the TORCH analysis of LABA-ICS vs LABA in relation to exacerbations, mortality and pneumonia.

Abstract

Real-world data provide the potential for generating evidence on drug treatment effects in groups excluded from trials, but rigorous, validated methodology for doing so is lacking. We investigated whether non-interventional methods applied to real-world data could reproduce results from the landmark TORCH COPD trial.

We performed a historical cohort study (2000-2017) of COPD drug treatment effects in the UK Clinical Practice Research Datalink (CPRD). Two control groups were selected from CPRD by applying TORCH inclusion/exclusion criteria and 1:1 matching to TORCH participants: control group 1 - people with COPD not prescribed fluticasone propionate-salmeterol (FP-SAL), control group 2 - people with COPD prescribed salmeterol (SAL). FP-SAL exposed groups were then selected from CPRD by propensity-score matching to each control group. Outcomes studied were COPD exacerbations, death from any cause and pneumonia.

2652 FP-SAL exposed people were propensity-score matched to 2652 FP-SAL unexposed people while 991 FP-SAL exposed people were propensity-score matched to 991 SAL exposed people. Exacerbation rate ratio was comparable to TORCH for FP-SAL versus SAL (0.85, 95% CI 0.74-0.97 vs 0.88, 0.81-0.95) but not for FP-SAL versus no FP-SAL (1.30, 1.19-1.42 vs 0.75, 0.69-0.81). Active comparator results were also consistent with TORCH for mortality (hazard ratio 0.93, 0.65-1.32 vs 0.93, 0.77-1.13) and pneumonia (risk ratio 1.39, 1.04-1.87 vs 1.47, 1.25-1.73).

We obtained very similar results to the TORCH trial for active comparator analyses, but were unable to reproduce placebo-controlled results. Application of these validated methods for active comparator analyses to groups excluded from RCTs provides a practical way for contributing to the evidence base and supporting COPD treatment decisions.

Introduction

The long-acting β_2 agonist - inhaled corticosteroid (LABA-ICS) combination product fluticasone propionate + salmeterol (FP-SAL) is one of the most widely used chronic obstructive pulmonary disease (COPD) treatments. It was studied in large randomised trials (such as the landmark TORCH study²) but the effects of treatment in important patient groups who were either not included or underrepresented in trials are unknown. Whilst real-world observational data has the potential to be used to carry out non-interventional studies of COPD drug treatment effects in groups excluded from trials, the use of these data for estimating treatment effectiveness is in its infancy. Demonstrating that non-interventional methods can account for the absence of treatment randomisation in real-world settings is a particular challenge. Rigorous, validated methodology is needed to translate these complex data into reliable evidence.[2]

One approach is to analyse “RCT-analogous” cohorts from non-interventional data sources - if results are comparable to those generated by the reference RCT, this should increase confidence in the validity of the results, and in the non-interventional methods used to obtain them. The validated non-interventional methodology could then go on to be used for the analysis of treatment effects within people prescribed drugs in clinical practice who would have been excluded from (or were underrepresented in) RCTs.[2]

In this study, we:

- (1) Applied trial inclusion and exclusion criteria to detect trial “eligible” participants from real-world data
- (2) Selected from these “eligible” participants to obtain a group who were as similar to the TORCH participants as possible by individual matching using TORCH data.
- (3) Applied standard observational methods to account for confounding.[1]

We then assessed whether treatment effects in this real-world cohort were comparable to those measured by the TORCH trial in terms of the effect of the FP-SAL fixed combination product on (1) exacerbations (2) mortality and (3) pneumonia.

Materials and methods

Study design

A historical cohort study, with validation against randomised controlled trial results.

Setting/data sources

This study uses individual trial data from the TORCH RCT (obtained via www.clinicalstudydatarequest.com), and non-interventional data from the UK Clinical Practice Research Datalink (CPRD) linked to Hospital Episodes Statistics (HES) data. We have described the use of CPRD in this study and the characteristics of TORCH in a previous publication (also replicated in appendix 1).[2]

Diagnostic and therapeutic codelists

All diagnostic and therapeutic codelist files are available for download (<https://datacompass.lshtm.ac.uk/1655/>).

Selection of participants - FP-SAL exposed vs unexposed

Step 1 – selection of all potentially eligible patients

An initial cohort was selected from all HES-linked patients actively registered in the CPRD between 1st January 2004 and 1st January 2017, who fulfilled the TORCH inclusion criteria (Appendix Table A1-1).[1] The date that an individual met all inclusion criteria with at least 12 months prior registration in the CPRD was the eligible-for-TORCH-inclusion date.

Step 2 – selection of pool of unexposed patients

Unexposed to FP-SAL time periods that occurred on or after the eligible-for-TORCH-inclusion date and did not meet any of the TORCH drug exposure exclusion criteria (Appendix Table A1-1) were selected (Appendix Figure A1-1).[1] The start of follow-up date (index date) for the unexposed time period was selected as a random date between the start and end of the unexposed period (Appendix Figure A1-1). Individuals in CPRD were able to contribute more than one such unexposed time period to the total pool of unexposed time periods (Appendix Figure A1-1). Unexposed time periods were then removed from the cohort if the patient met any of the remaining TORCH study exclusion criteria prior to the index date.[1]

Step 3 - selection of unexposed to FP-SAL people by 1:1 matching FP-SAL time periods to TORCH participants

Each individual TORCH participant from the TORCH RCT (obtained via www.clinicalstudydatarequest.com as described in the setting/data sources section above) was matched 1:1 with the closest available unexposed to FP-SAL time period on the following TORCH baseline characteristics: age, sex, body mass index, 1-year history of exacerbations requiring hospitalisation, history of cardiovascular disease and lung function (FEV₁) (see Appendix 1). An individual could only contribute one unexposed period to the final TORCH-matched unexposed cohort (Appendix Figure A1-1), therefore the output of this step was a cohort of unexposed to FP-SAL people.

Step 4 - selection of exposed to FP-SAL time periods and application of TORCH exclusion criteria

All prescriptions for FP-SAL that started (1) on or after the initial eligible-for-TORCH-inclusion date specified in Step 1 above and (2) at least 4 weeks after the end of a prescription for any of the TORCH study drugs were identified. FP-SAL exposed time periods were created with the index date assigned as the start of an FP-SAL prescription. The same exclusion criteria as applied to the unexposed FP-SAL time periods (Step 3) were applied. If an individual contributed time periods to both the unexposed (Step 2) and exposed (Step 4) cohorts, they were contributing different periods

of their person-time to each cohort (pre-FP-SAL treatment for Step 2 vs post-FP-SAL treatment for Step 4) (Appendix Figure A1-1).

Step 5 – selection of comparable FP-SAL exposed participants by matching FP-SAL exposed time periods to FP-SAL unexposed people

Using the index date baseline characteristics, propensity scores for receiving FP-SAL were calculated for the (TORCH-matched) FP-SAL unexposed people selected in Step 3 and the FP-SAL exposed time periods selected in Step 4. Each FP-SAL unexposed (TORCH-matched) person selected in Step 3 was matched 1:1 with the FP-SAL exposed time period from Step 4 with the closest propensity score. An individual could only appear once as an exposed participant in the final propensity-score matched cohort, meaning that this step selected FP-SAL exposed participants from the initial pool of FP-SAL exposed time periods. It was possible for the same person to be included in the FP-SAL unexposed and FP-SAL exposed cohorts, with different start of follow-up dates in each cohort.

Note that we did not apply matching to the TORCH trial in order to select our FP-SAL exposed group, because we wanted to develop propensity score methodology for obtaining balanced groups that could then be applied to the study of groups of patients who were not included in the trial at all.

Selection of participants - FP-SAL exposed vs SAL exposed

The participant selection approach was analogous to the FP-SAL exposed v versus FP-SAL unexposed participant selection, except the comparator group was those exposed to SAL, and the study period was 2000-2017 (to obtain sufficient SAL-exposed numbers). The other differences in participant selection are detailed in Appendix 1.

Exposures, outcomes and co-variates

Exposures

Exposure status was determined using CPRD prescribing records. Being prescribed FP-SAL was the primary exposure of interest and the comparison exposure groups were (1) people not being

prescribed FP-SAL and (2) people being prescribed salmeterol (SAL) only. See Appendix 1 for further details.

Outcomes

Outcomes were COPD exacerbation, all cause mortality, pneumonia and time to treatment discontinuation (see Appendix A1, Outcomes – further details on outcome definitions).

Covariates

Covariates available for inclusion in the propensity score models have been detailed previously and are listed in Appendix 1.[2]

Statistical analysis

Propensity score for addressing confounding

A pool of Initial variables were selected based upon a-priori knowledge/clinical expertise. Those not associated with outcome in crude analysis were then removed, before applying multivariable logistic regression (on drug exposure status) to generate propensity scores.[2] Variables were selected for inclusion in the final propensity score multivariable logistic regression model using LRT tests for goodness of fit. Starting from an initial fully adjusted model that included all initial variables found to be associated with outcome, goodness of fit was tested after removing variables sequentially from the logistic regression model (starting with the variable most weakly associated with exposure in the fully adjusted model). Variables with an LRT p-value of >0.1 were removed from the model. Separate propensity scores were developed in this way for each outcome. Standardised differences were used to assess any residual imbalances after matching (with $sd > 0.1$ indicating substantial/important imbalance).[3]

Methods of analysis

Comparisons were made for each outcome over 3 years between (a) people exposed to FP-SAL vs people unexposed to FP-SAL (matched on propensity score) and (b) people exposed to FP-SAL vs people exposed to SAL (matched on propensity score). All analyses were performed according to the

'intention-to-treat' principle (Appendix A1), estimating the same effect measures as TORCH. The number of exacerbations was modelled using a negative binomial model with the log of treated time as an offset variable. Time to mortality and treatment discontinuation were analysed using Cox proportional hazards regression, pneumonia risk using Poisson regression.

Validation of results against TORCH

Detailed criteria for considering results to be comparable with TORCH were pre-specified and published previously (Appendix A1).[2]

Missing data

Complete records analysis was applied given the low proportion of missing data (only SES, alcohol or BMI had any missing data, and all <5% missing).

Analysis of impact of (1) TORCH matching (2) TORCH criteria (post-hoc analysis)

A post-hoc analysis was performed assessing the impact of (1) omitting TORCH matching and (2) omitting both TORCH matching and application of TORCH trial inclusion/exclusion criteria (see Appendix 1 for details).

Ethics

Scientific approval was provided by the LSHTM Research Ethics Committee (Ref 11997) and the Independent Scientific Advisory Committee of the Medicines and Healthcare Products Regulatory Agency (protocol no. 17_114R). CPRD data are already approved via a National Research Ethics Committee for purely non-interventional research of this type. Approval for use of the TORCH trial data was obtained from the Wellcome Trust, the relevant sponsor (GSK) and an independent review panel.

Results

Participants

FP-SAL exposed vs FP-SAL unexposed

Between 1st January 2004 and 1st January 2017 there were 125671 people in CPRD with a diagnosis of COPD, 73889 (59%) of whom were from HES-linked CPRD practices (Figure 1). Application of TORCH inclusion criteria reduced this to 18715 people, contributing 35746 unexposed to FP-SAL time periods and 26390 exposed to FP-SAL time periods. After applying TORCH exclusion criteria, dropping records with missing covariate data and matching the unexposed patients to TORCH participants, there were 4196 unexposed patients available for propensity-score matching to 10463 FP-SAL-exposed time periods. The final propensity-score matched cohorts included 2652 patients in each exposure group for the exacerbations analysis, 2708 for mortality and 2779 for pneumonia.

[Figure 1 Flow of number of individuals included in the exposed to FP-SAL vs unexposed to FP-SAL cohort analysis]

Note: Current/previous use of COPD drugs relates to any of the drugs studied in TORCH, long-acting bronchodilators and oral corticosteroids; see supplementary material Table A1-1 for specific details

FP-SAL exposed vs SAL exposed

For the FP-SAL vs SAL analysis, there were 154785 people with a diagnosis for COPD in CPRD between 1st January 2000 and 1st January 2017, 91733 (59%) of whom were from HES-linked CPRD practices (Figure 2). 1146 SAL exposed patients were available for propensity-score matching to 11235 FP-SAL-exposed periods. The final propensity-score matched cohorts included 991 (exacerbations), 432 (mortality), 935 (pneumonia) and 996 (treatment discontinuation) patients per exposure group.

[Figure 2 Flow of number of individuals included in the exposed to FP-SAL vs exposed to SAL cohort analysis]

Note: Current/previous use of COPD drugs relates to any of the drugs studied in TORCH, long-acting bronchodilators and oral corticosteroids; see supplementary material Table A1-1 for specific details

Application of TORCH inclusion/exclusion criteria and matching to TORCH

Applying the TORCH inclusion/exclusion criteria and matching to TORCH resulted in cohorts that were much more similar to those recruited to the TORCH trial (e.g. FEV₁ % of predicted for the FP-SAL vs unexposed to FP-SAL analysis was 66.3 in CPRD before applying any criteria or matching, compared to 47.2 after these steps, compared to a TORCH placebo group value of 44.2 – Appendix Table A2-1). The largest residual difference to the TORCH placebo group was for prior cardiovascular disease for both comparisons (Appendix tables A2-1 and A2-2).

Propensity score matching of CPRD cohorts

Details of the variables included in the final propensity score models are provided in Appendix 2 Table A2-3.

FP-SAL exposed vs FP-SAL unexposed

Prior to propensity score matching, differences by exposure status were noted for sex, FEV₁, BMI, prior exacerbations, coronary heart disease, peripheral vascular disease, cerebrovascular disease, prescriptions for aspirin, COPD medications, number of GP consultations and number of distinct medications (Table 1). After propensity score matching, only the difference with respect to coronary heart disease, peripheral vascular disease and LABA persisted (Table 1). Plots of propensity score distributions indicated close propensity score matching for exacerbations and all other outcomes under study (Appendix Figure A2-1).

Table 1: Characteristics of the FP-SAL vs unexposed to FP-SAL cohort before and after propensity score matching for the exacerbations analysis

Variable – n(%) unless specified	CPRD non-interventional population					
	Before propensity score matching			After propensity score ¹ matching		
	Unexposed to FP-SAL ² (N=4196 people)	Exposed to FP-SAL ³ (N=10463 exposed time periods from 4259 people)	Standardised difference	Unexposed to FP-SAL (N=2652 people)	Exposed to FP-SAL (N=2652 people)	Standardised difference
Age* – year (median(IQR))	67 (61-73)	68 (62-74)	0.103	68 (61-73)	68 (62-74)	0.083
Male sex*	3175 (76)	6515 (62)	0.293	1868 (70)	1850 (70)	0.015
Lung function*⁴						
FEV ₁ ⁵ . % of predicted (median (IQR))	47 (38-56)	50 (40-60)	0.297	49 (39-57)	48 (38-56)	0.024
FEV ₁ :FVC ⁶ - % (median (IQR))	53 (44-61)	53 (44-63)	0.073	53 (44-62)	52 (43-61)	0.045
Body-mass index*⁴ (median (IQR))	26 (22-29)	26 (23-31)	0.191	26 (23-30)	26 (22-30)	0.024
Prior exacerbations¹¹ ((mean (SD))	0.51 (0.92)	0.66 (1.13)	0.148	0.56 (0.96)	0.62 (1.04)	0.060
Cardiovascular disease⁷						
Coronary heart disease	1114 (27)	1783 (17)	0.232	720 (27)	441 (17)	0.257
Peripheral vascular disease	390 (9)	648 (6)	0.116	253 (10)	166 (6)	0.122
Cerebrovascular disease*	434 (10)	714 (7)	0.126	212 (8)	222 (8)	0.014
Other atherosclerosis	11 (0)	20 (0)	0.015	7 (0)	7 (0)	0.008
Statin prescription*⁸	2066 (49)	4614 (44)	0.103	1227 (46)	1238 (47)	0.008
Aspirin prescription⁸	1563 (37)	3129 (30)	0.156	954 (36)	828 (31)	0.101
Other COPD medication prescriptions⁸:						
LABA ⁹	295 (7)	333 (3)	0.175	197 (7)	106 (4)	0.148
ICS* ⁹	530 (13)	842 (8)	0.151	280 (11)	333 (13)	0.063
LAMA* ⁹	1450 (35)	6284 (60)	0.528	1166 (44)	1177 (44)	0.008
ICS plus LABA* ¹⁰	526 (13)	488 (5)	0.284	196 (7)	258 (10)	0.084
Type 2 diabetes⁷	543 (13)	1496 (14)	0.040	373 (14)	337 (13)	0.04
History of cancer⁷	696 (17)	2105 (20)	0.091	486 (18)	451 (17)	0.035
Chronic kidney disease⁷	540 (13)	1477 (14)	0.037	389 (15)	333 (13)	0.062
Healthcare utilisation¹¹						
# of GP consultations (median (IQR))*	154 (79-242)	202 (132-299)	0.409	172 (104-264)	172 (107-260)	0.044
# of distinct medications (median (IQR))*	4 (2-7)	5 (3-8)	0.180	4 (2-7)	5 (3-8)	0.073
# of hospitalisations (median (IQR))*	0 (0-1)	0 (0-1)	0.008	0 (0-1)	0 (0-1)	0.007
# of hospital procedures (median (IQR))*	0 (0-0)	0 (0-1)	0.022	0 (0-0)	0 (0-0)	0.011

Note 1: See Appendix Table A2-3 for list of variables included in final exacerbations propensity score model. Variables in this table that were included in the propensity score are annotated with an “*”. **Note 2:** TORCH inclusion/exclusion criteria applied and matched to TORCH individual patient data. **Note 3:** TORCH inclusion/exclusion criteria applied. **Note 4:** Closest record prior to index date. **Note 5:** FEV₁=Forced expiratory volume in 1 second. **Note 6:** FVC=Forced vital capacity **Note 7:** Any diagnosis for condition prior to index date. **Note 8:** Number who had at least one prescription within the previous year. LABA=long acting beta-agonist, ICS=inhaled corticosteroid, LAMA=long-acting muscarinic antagonist **Note 9:** Single product only. **Note 10:** Combination product. **Note 11:** All counted within the year prior to index, includes exacerbations recorded in primary or secondary care.

FP-SAL exposed vs SAL exposed

For the FP-SAL vs SAL exacerbations analysis, after propensity score matching there were notable imbalances in prior prescriptions for a LABA or an ICS and frequency of consultations, with smaller imbalances for lung function, body-mass index, coronary heart disease, statin prescription, aspirin prescription, LAMA, ICS plus LABA, and prior GP consultations (Table 2). Plots of propensity score distribution indicated that overall groups were well matched on propensity score for each outcome (Appendix Figure A2-1).

Table 2: Characteristics of the FP-SAL vs SAL cohort before and after propensity score matching for the exacerbations analysis

Variable – n(%) unless specified	CPRD non-interventional population					
	Before propensity score matching			After propensity score ¹ matching		
	SAL ² (N=1146 people)	FP-SAL ³ (N=11235 exposed time periods from 4523 people)	Standardised difference	SAL (N=991 people)	FP-SAL (N=991 people)	Standardised difference
Age – year (median(IQR))	68 (62-73)	68 (62-74)	0.051	68 (62-73)	67 (61-73)	0.038
Male sex*	728 (64)	6960 (62)	0.033	628 (63)	637 (64)	0.019
Lung function⁴						
FEV ₁ ⁵ .% of predicted (median (IQR))*	49 (41-57)	50 (40-60)	0.272	50 (41-57)	49 (40-57)	0.107
FEV ₁ :FVC ⁶ - % (median (IQR))	53 (44-61)	53 (44-62)	0.022	53 (45-62)	51 (42-60)	0.122
Body-mass index⁴ (median (IQR))	26 (23-30)	26 (22-30)	0.057	26 (23-30)	26 (22-29)	0.123
Prior exacerbations¹¹ ((mean(SD))	0.63 (1.02)	0.61 (1.07)	0.017	0.62 (1.01)	0.61 (1.03)	0.010
Cardiovascular disease⁷						
Coronary heart disease	207 (18)	1958 (17)	0.017	175 (18)	129 (13)	0.129
Peripheral vascular disease	71 (6)	749 (7)	0.019	62 (6)	62 (6)	0.000
Cerebrovascular disease	87 (8)	792 (7)	0.021	81 (8)	64 (6)	0.066
Other atherosclerosis	1 (0)	21 (0)	0.027	1 (0)	1 (0)	0.026
Statin prescription⁸	462 (40)	4906 (44)	0.068	411 (41)	344 (35)	0.140
Aspirin prescription⁸	333 (29)	3376 (30)	0.022	297 (30)	246 (25)	0.116
Other COPD medication prescriptions⁸:						
LABA ⁹	793 (69)	98 (1)	2.052	648 (65)	15 (2)	1.839
ICS* ⁹	419 (37)	862 (8)	0.742	275 (28)	387 (39)	0.241
LAMA ⁹	477 (42)	6598 (59)	0.347	432 (44)	487 (49)	0.111
ICS plus LABA ¹⁰	28 (2)	537 (5)	0.125	24 (2)	50 (5)	0.139
Type 2 diabetes*⁷	116 (10)	1549 (14)	0.113	101 (10)	100 (10)	0.003
History of cancer⁷	200 (17)	2252 (20)	0.066	178 (18)	163 (16)	0.040
Chronic kidney disease*⁷	104 (9)	1535 (14)	0.145	89 (9)	85 (9)	0.014
Healthcare utilisation¹¹						
# of GP consultations (median (IQR))*	101 (0-215)	207 (136-301)	0.765	124 (0-237)	147 (91-218)	0.175
# of distinct medications (median (IQR))	5 (3-8)	5 (3-8)	0.039	5 (3-8)	5 (3-8)	0.019
# of hospitalisations (median (IQR))*	0 (0-1)	0 (0-1)	0.063	0 (0-1)	0 (0-1)	0.005
# of hospital procedures (median (IQR))*	0 (0-0)	0 (0-1)	0.065	0 (0-0)	0 (0-0)	0.035

Note 1: See Appendix Table A2-3 for list of variables included in final exacerbations propensity score model. Variables in this table that were included in the propensity score are annotated with an “*”. **Note 2:** TORCH inclusion/exclusion criteria applied and matched to individual TORCH patients. **Note 3:** TORCH inclusion/exclusion criteria applied. **Note 4:** Closest record prior to index date. **Note 5:** FEV₁=Forced expiratory volume in 1 second. **Note 6:** FVC=Forced vital capacity **Note 7:** Any diagnosis for condition prior to index date. **Note 8:** Number who had at least one prescription within the previous year. LABA=long acting beta-agonist, ICS=inhaled corticosteroid, LAMA=long-acting muscarinic antagonist **Note 9:** Single product only. **Note 10:** Combination product. **Note 11:** All counted within the year prior to index.

Main results

FP-SAL exposed vs FP-SAL unexposed

For the exacerbations analysis, the rate ratio in the propensity score matched groups was 1.30 (95% CI 1.19-1.42) (Table 3). According to our pre-specified protocol this (harmful) association was not considered to be consistent with the (protective) TORCH placebo-controlled result for the same outcome (0.75, 95% CI 0.69-0.81).[2] Similarly, our result for the mortality outcome (HR 1.11, 95% CI 0.95-1.26) was in the opposite direction to the TORCH placebo-controlled result (0.83, 0.68-1.00). For the pneumonia analysis, we found weak evidence for a 14% increased risk associated with FP-SAL (risk ratio 1.14, 0.96-1.34) which was not consistent with the stronger harmful association found by the TORCH placebo-controlled analysis (1.59, 1.35-1.88).

Table 3: Results for the analysis of exacerbations, mortality, pneumonia and time to treatment discontinuation for FP-SAL vs no FP-SAL (compared to TORCH results)

	CPRD non-interventional population		TORCH trial population ¹	
	Unexposed to FP-SAL (n=4196)	Exposed to FP-SAL (n=10463)	Placebo (n=1524)	FP-SAL (n=1533)
Exacerbations				
Person-years at risk	9330	22054	-	-
Events	4994	15944	-	-
Rate ²	0.53	0.72	1.13	0.85
Crude rate ratio	1	1.35 (1.28-1.43)	-	-
Propensity matched rate ratio	1	1.30 (1.19-1.42) ³	1	0.75 (0.69-0.81)
Mortality				
Person-years at risk	9330	22054	-	-
Events	543	1245	-	-
Prob ⁴ at 3 yrs (%)	16.13	16.04	15.16	12.59
Crude hazard ratio	1	0.98 (0.88-1.08)	-	-
Propensity matched hazard ratio	1	1.11 (0.95-1.26) ⁵	1	0.83 (0.68-1.00)
Pneumonia				
Events	350	998	-	-
% of total patients	8.34	9.54	12.31	19.60
Crude risk ratio	1	1.14 (1.01-1.28)	-	-
Propensity matched risk ratio	1	1.14 (0.96-1.34) ⁷	1	1.59 (1.35-1.88)
Time to treatment discontinuation				
Person-years at risk	- ⁶	20402	-	-
Events	-	2255	-	-
Prob ⁴ at 3 yrs (%)	-	28.20	43.50	33.70
Crude hazard ratio	-	-	-	-
Propensity matched hazard ratio	-	-	1	0.69 (0.62-0.78)

Note 1: Only results reported in the TORCH trial publication are shown. **Note 2:** Per person per year. **Note 3:** 2652 in each exposure group after propensity score matching. See Appendix Table A2-3 for list of variables contributing to propensity score for exacerbations analysis. **Note 4:** Probability of event at 3 years, calculated using a Cox proportional-hazards model. **Note 5:** 2708 in each exposure group after propensity score matching. See Appendix Table A2-3 for list of variables contributing to propensity score for mortality analysis. **Note 6:** Time to treatment discontinuation analysis not applicable for unexposed to FP-SAL group **Note 7:** 2779 in each exposure group after propensity score matching. See Appendix Table A2-3 for list of variables contributing to propensity score for pneumonia analysis.

FP-SAL exposed vs SAL exposed

For the exacerbations analysis, we obtained a propensity score matched rate ratio of 0.85 (95% CI 0.74-0.97). According to our pre-specified protocol this (protective) effect was considered to be consistent with the TORCH FP-SAL vs SAL result for the same outcome (0.88, 0.81-0.95) (Table 4).[2] Similarly, our result for the mortality outcome (HR 0.93, 95% CI 0.65-1.32) was consistent with the TORCH FP-SAL vs SAL result (0.93, 0.77-1.13). For the pneumonia analysis, we found evidence for a 39% increased risk associated with FP-SAL (risk ratio 1.39, 95% CI 1.04-1.87) which was also consistent with the harmful association found by the TORCH FP-SAL vs SAL analysis (1.47, 1.25-1.73). For the time to treatment discontinuation analysis, the effect was apparently much stronger outside of the trial setting (non-interventional HR 0.23, 95% CI 0.20-0.27 vs TORCH 0.89, 0.79-0.99).

Table 4: Results for the analysis of exacerbations, mortality, pneumonia and time to treatment discontinuation for FP-SAL vs SAL (compared to TORCH results)

	CPRD non-interventional population		TORCH trial population ¹	
	SAL (n=1146)	FP-SAL (n=11235)	SAL (n=1521)	FP-SAL (n=1533)
Exacerbations				
Person-years at risk	2566	24062	-	-
Events	1515	14034	-	-
Rate ²	0.73	0.59	0.97	0.85
Crude rate ratio	1	0.80 (0.72-0.88)	-	-
Propensity matched rate ratio	1	0.85 (0.74-0.97) ³	1	0.88 (0.81-0.95)
Mortality				
Person-years at risk	2566	24062	-	-
Events	138	1445	-	-
Prob ⁴ at 3 yrs (%)	15.09	16.84	13.48	12.59
Crude hazard ratio	1	1.12 (0.94-1.34)	-	-
Propensity matched hazard ratio	1	0.93 (0.65-1.32) ⁵	1	0.93 (0.77-1.13)
Pneumonia				
Events	86	1137	-	-
% of total patients	7.50	10.12	13.29	19.60
Crude risk ratio	1	1.35 (1.09-1.66)	-	-
Propensity matched risk ratio	1	1.39 (1.04-1.87) ⁷	1	1.47 (1.25-1.73)
Time to treatment discontinuation				
Person-years at risk	1251	21587	-	-
Events	740	2449	-	-
Prob ⁴ at 3 yrs (%)	77.02	28.04	36.40	33.70
Crude hazard ratio	1	0.22 (0.20-0.23)	-	-
Propensity matched hazard ratio	1	0.23 (0.20-0.27) ⁶	1	0.89 (0.79-0.99)

Note 1: Only results reported in the TORCH trial publication are shown. **Note 2:** Per person per year. **Note 3:** 991 in each exposure group after propensity score matching. See Appendix Table A2-3 for list of variables contributing to propensity score for exacerbations analysis.

Note 4: Probability of event at 3 years, calculated using a Cox proportional-hazards model **Note 5:** 443 in each exposure group after propensity score matching. See Appendix Table A2-3 for list of variables contributing to propensity score for mortality analysis. **Note 6:** 935 in each exposure group after propensity score matching. See Appendix Table A2-3 for list of variables contributing to propensity score for time to treatment discontinuation analysis. **Note 7:** 996 in each exposure group after propensity score matching. See Appendix Table A2-3 for list of variables contributing to propensity score for pneumonia analysis.

Analysis of impact of (1) TORCH matching (2) TORCH criteria (post-hoc analysis)

Repeating the FP-SAL vs SAL analysis omitting the TORCH matching step led to an exacerbations rate ratio of 0.87 (0.81-0.94) (Table 5), very similar to both the main analysis and TORCH result. In contrast, applying neither the TORCH criteria nor matching led to a completely different effect estimate (1.64, 1.52-1.77).

Table 5 - Impact of choice of selection methods on ability to replicate trial results for the analysis of exacerbations, in people exposed to FP-SAL vs people exposed to SAL

	Rate ratio		n per exposure group
	SAL	FP-SAL	
TORCH trial	1	0.88 (0.81-0.95)	1524
CPRD non-interventional selection method¹			
TORCH incl and excl criteria & matched to TORCH ²	1	0.85 (0.74-0.97)	991
TORCH incl and excl criteria only	1	0.87 (0.81-0.94)	3225
No TORCH criteria or matching	1	1.64 (1.52-1.77)	5951

Note 1: SAL and FP-SAL groups propensity score matched for all selection methods **Note 2:** As per the main analysis and presented in Table 4

Discussion

We have demonstrated that methods applied to non-interventional data can generate results comparable to active comparator trials for COPD treatment effects. In contrast, we found that the same methods were unable to replicate placebo-controlled trial results.

Comparison with previous studies

Previous studies applying similar “trial-replication” approaches

Although a number of papers have compared the designs of observational studies with randomised controlled trials,[4][5][6][7][8][9], and some studies have generated results similar to an earlier or subsequent trial,[10][11][12] there are very few non-interventional studies that have set out to explicitly replicate a specific trial cohort and its results.

Hernan et al replicated the design and result of the Women’s Health Initiative randomised trial on the effect of estrogen/progestin therapy on coronary heart disease risk.[13] Smeeth et al analysed the effect of statins on a range of health outcomes and replicated the Heart Protection Study randomised trial.[14] Fralick et al applied trial criteria and utilised propensity score matching to replicate cardiovascular results from the ONTARGET trial (comparing telmisartan to ramipril).[15]

Previous studies of COPD drug treatment effects

Results of 5 (LABA/ICS vs LABA) interventional studies (including TORCH) were summarised in a Cochrane review (rate ratio 0.76, 95% CI 0.68-0.84).[16] Three out of these five studies estimated effect sizes considerably greater than TORCH - as we mirrored TORCH, our results aligned most closely to TORCH.

A number of studies have found strong survival benefits of ICS therapy after hospital discharge.[15][17][18][18] After accounting for likely time-related biases impacting these studies, a null effect was obtained (rate ratio 0.94, 95% CI 0.81 – 1.09).[19] The methodology we applied obtained a mortality effect estimate comparable to the analysis designed to account for time-related biases (0.93, 95% CI 0.65-1.32).

In-line with TORCH, previous studies have found an increased risk of pneumonia associated with ICS-containing treatments for COPD.[20][21][16] Our result (risk ratio 1.39, 1.04-1.87) was consistent with results of a meta-analysis of trials comparing LABA/ICS to LABA formulations (1.55, 1.20-2.01)[16] and very similar to a recent non-interventional study comparing LABA/ICS to LAMA formulations (HR 1.37, 1.17-1.60).[22]

Our 3 year probability of treatment discontinuation for FP-SAL (28%) is comparable to non-adherence figures from previous non-interventional real-world data studies (49%, 43%).[23, 24] The probability of discontinuation of salmeterol that we observed (77%) was higher than these two previous non-interventional studies, leading to the discrepancy with TORCH. We hypothesised that during our study period a large proportion of the patients who would have been initially prescribed salmeterol would have been likely to switch to FP-SAL due to prescribing decisions in primary care – a post-hoc analysis found that 43% of people prescribed salmeterol switched to FP-SAL during follow-up (compared to only 2% switching from FP-SAL to salmeterol).

Implications and further work

When studying COPD treatment effects, if (1) the analysis is of active comparators (2) trial exclusion and inclusion criteria are applied and (3) the propensity score models that we developed for each outcome are applied to balance exposure groups, then the results of studies carried out in routinely collected non-interventional data can be considered robust in the sense that they will be highly comparable to trial results. This now provides a methodological framework for being able to analyse COPD drug treatment effects in real-world data, focusing on groups that were either not included or underrepresented in trials.[2]

Our inability to replicate placebo-controlled analyses suggests uncontrolled confounding by indication.[25] One possibility for how this confounding by indication may be manifesting relates to the aspect of our study design that allowed people to be included in both the exposed and unexposed cohorts; the result we obtained could be strongly influenced by people initially in the unexposed group who are relatively healthy but then get sicker over time and require FP-SAL

treatment and end up in the exposed group. However in a post-hoc analysis where we dropped the 730 (out of a total of 2652 per group) people who appeared in both cohorts, our effect estimate was nearly identical (RR 1.33, 95% CI 1.20 - 1.47). We do consider however, that because COPD treatment is based on a step-up approach, it is highly likely that patients not exposed to FP-SAL in routine primary care are generally likely to be those with milder COPD.

One point of note relates to the large difference in incidence rate between the TORCH placebo group (1.13 exacerbations per person per year) and our FP-SAL unexposed group (0.53 exacerbations per person per year). In order to investigate underlying reasons for this discrepancy, we performed a post-hoc analysis where we compared the characteristics of the 1753 people from TORCH who were not able to be matched to our unexposed to FP-SAL population in Step 3 with those who were successfully matched. We found that those not matched were younger (mean age 60.7 vs 65.8), sicker (e.g. history of cardiovascular disease 93% vs 46%), had worse lung function (e.g. FEV1 34.9 vs 45.9), and included a higher proportion recruited from Eastern European trial sites (27% vs 17%). People with these characteristics may have been highly suitable for recruitment to clinical trials, but are very difficult to find in UK primary care, and illustrate why it is likely to be challenging to obtain comparable absolute rates in emulated cohorts within a single country based on historical international trials.

Previous authors have recommended that when trying to emulate trial results, it is important to choose an active comparator trial.[15] There are examples where placebo-controlled analyses have been successfully replicated, however.[13, 14] One possibility is that replication of placebo-controlled results works better when the drug studied is (1) preventative and (2) used in a generally healthy cohort (for example, the cited studies were of statins and of postmenopausal hormone therapy both prescribed in some instances to people without a specific underlying chronic disease, in contrast to the patients with COPD who received therapy in our study). We consider that further avenues of research could be followed to understand if there remains a possibility of replicating placebo-controlled studies within a non-interventional setting for COPD therapies. These could include application of high dimensional propensity scores or the use of instrumental variables. Our

work also suggests that treatment discontinuation in the setting of non-interventional data may be driven by very different factors to those seen in trials and, at least in the setting of COPD, may not be a useful outcome to study. For example, it is difficult to establish from routinely collected data whether a patient has truly stopped taking their medicine, or is just taking the medicine differently than prescribed (e.g. is taking less than has been prescribed over a longer period).

Finally, in our post-hoc analysis we found that the application of the trial matching step did not confer any advantage over application of trial criteria alone in this setting. This suggests that treatment-covariate interactions are not as critical as we initially thought in this therapeutic area.

Limitations

Some of the TORCH inclusion criteria were not fully assessable using CPRD data, meaning the inclusion/exclusion criteria are analogous with TORCH criteria but we acknowledge they are not identical. We originally planned to apply frequency of COPD therapy prescriptions in the previous year as a matching character/criteria. In practice this was not feasible. However, it appears that matching at this level of detail was not required to be able to replicate trial results for active comparator analysis. Finally, within TORCH, the dose of the fixed combination product FP-SAL was specified as 500µg of FP and 50µg of SAL (500/50), and the dose of SAL alone as 50 µg, whereas in our study we did not limit to a specific dose. The reason for this is that dosage information is incompletely captured in CPRD, but as these are the only approved doses of FP-SAL and of SAL for COPD in the UK, we consider the doses that people were prescribed in our study would have been generally similar to that administered in the TORCH trial.

Conclusions

By replicating the COPD TORCH trial selection procedures and inclusion/exclusion criteria in real-world data and developing propensity score models to account for any remaining differences between groups, we were able to obtain highly comparable relative effect estimates to the TORCH randomised controlled trial active comparator analysis for exacerbations, mortality and pneumonia. Replication of placebo-controlled analyses was not possible, and further work to investigate whether

likely residual confounding by indication can ever be accounted for in this therapeutic area is warranted. Application of the same selection procedures and propensity score models developed here to active comparator analyses of COPD drug treatment effects in groups underrepresented or excluded from trials provides a practical way for key evidence gaps to be filled.

Funding statement

This work was supported by NIHR grant number 15/80/28

References

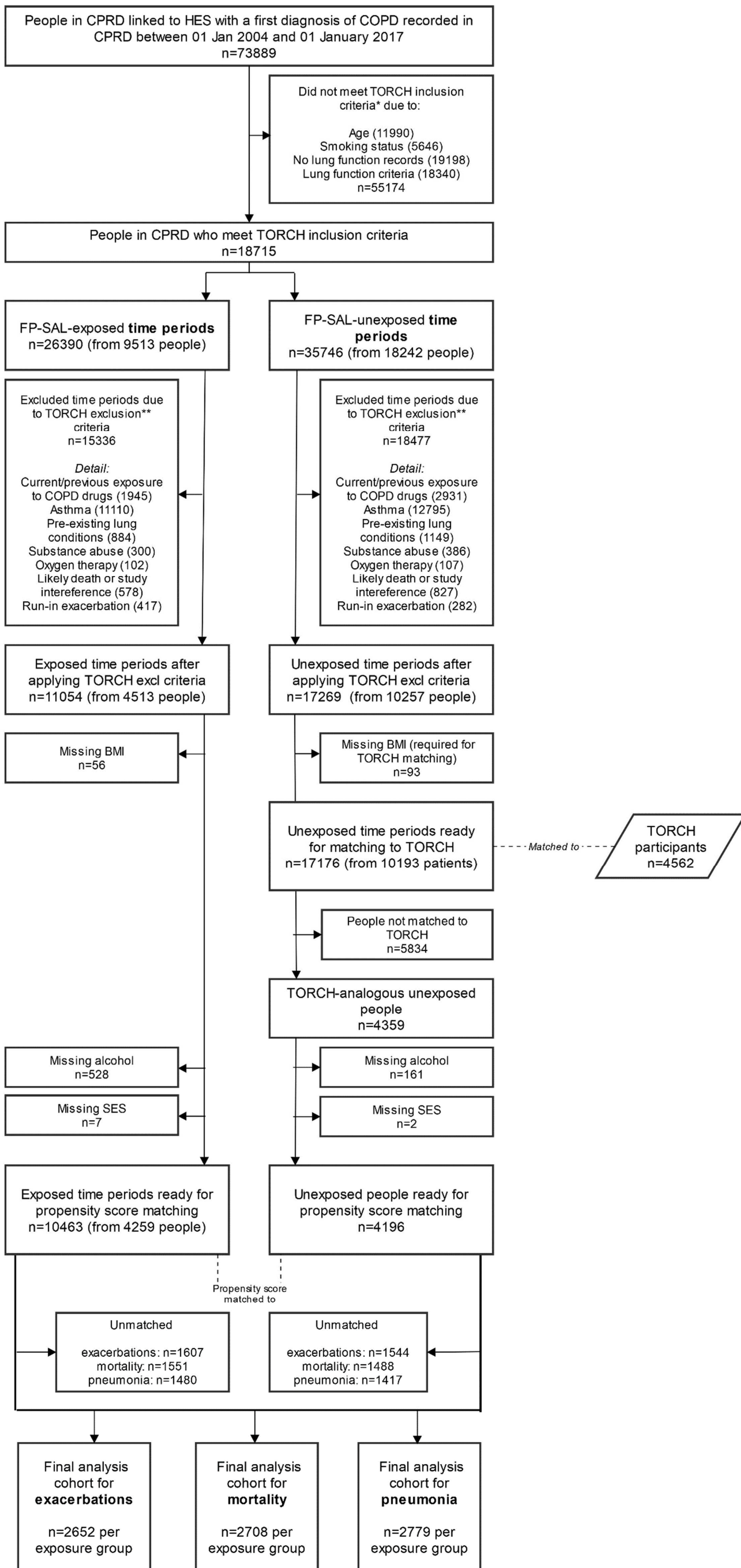
1. Calverley PMA, Anderson JA, Celli B, Ferguson GT, Jenkins C, Jones PW, Yates JC, Vestbo J. Salmeterol and Fluticasone Propionate and Survival in Chronic Obstructive Pulmonary Disease. *N. Engl. J. Med.* [Internet] Massachusetts Medical Society; 2007 [cited 2016 Aug 4]; 356: 775–789 Available from: <http://www.nejm.org/doi/abs/10.1056/NEJMoa063070>.
2. Wing K, Williamson E, Carpenter JR, Wise L, Schneeweiss S, Smeeth L, Quint JK, Douglas I. Real-world effects of medications for chronic obstructive pulmonary disease: protocol for a UK population-based non-interventional cohort study with validation against randomised trial results. *BMJ Open* [Internet] British Medical Journal Publishing Group; 2018 [cited 2018 Apr 19]; 8: e019475 Available from: <http://www.ncbi.nlm.nih.gov/pubmed/29581202>.
3. Williamson EJ, Forbes A. Introduction to propensity scores. *Respirology* 2014; 19: 625–635.
4. Concato J, Shah N, Horwitz RI. Randomized, controlled trials, observational studies, and the hierarchy of research designs. *N. Engl. J. Med.* [Internet] Massachusetts Medical Society; 2000 [cited 2016 Oct 10]; 342: 1887–1892 Available from: <http://www.nejm.org/doi/abs/10.1056/NEJM200006223422507>.
5. Golder S, Loke YK, Bland M. Meta-analyses of Adverse Effects Data Derived from Randomised Controlled Trials as Compared to Observational Studies: Methodological Overview. *PLoS Med* [Internet] Public Library of Science; 2011; 8: e1001026 Available from: <http://dx.doi.org/10.1371%2Fjournal.pmed.1001026>.
6. Deeks JJ, Dinnes J, D’Amico R, Sowden AJ, Sakarovitch C, Song F, Petticrew M, Altman DG, International Stroke Trial Collaborative Group, European Carotid Surgery Trial Collaborative Group. Evaluating non-randomised intervention studies. *Health Technol. Assess.* (Rockv). 2003.
7. Lawlor DA, Smith GD, Kundu D, Bruckdorfer KR, Ebrahim S. Those confounded vitamins: What can we learn from the differences between observational versus randomised trial evidence?

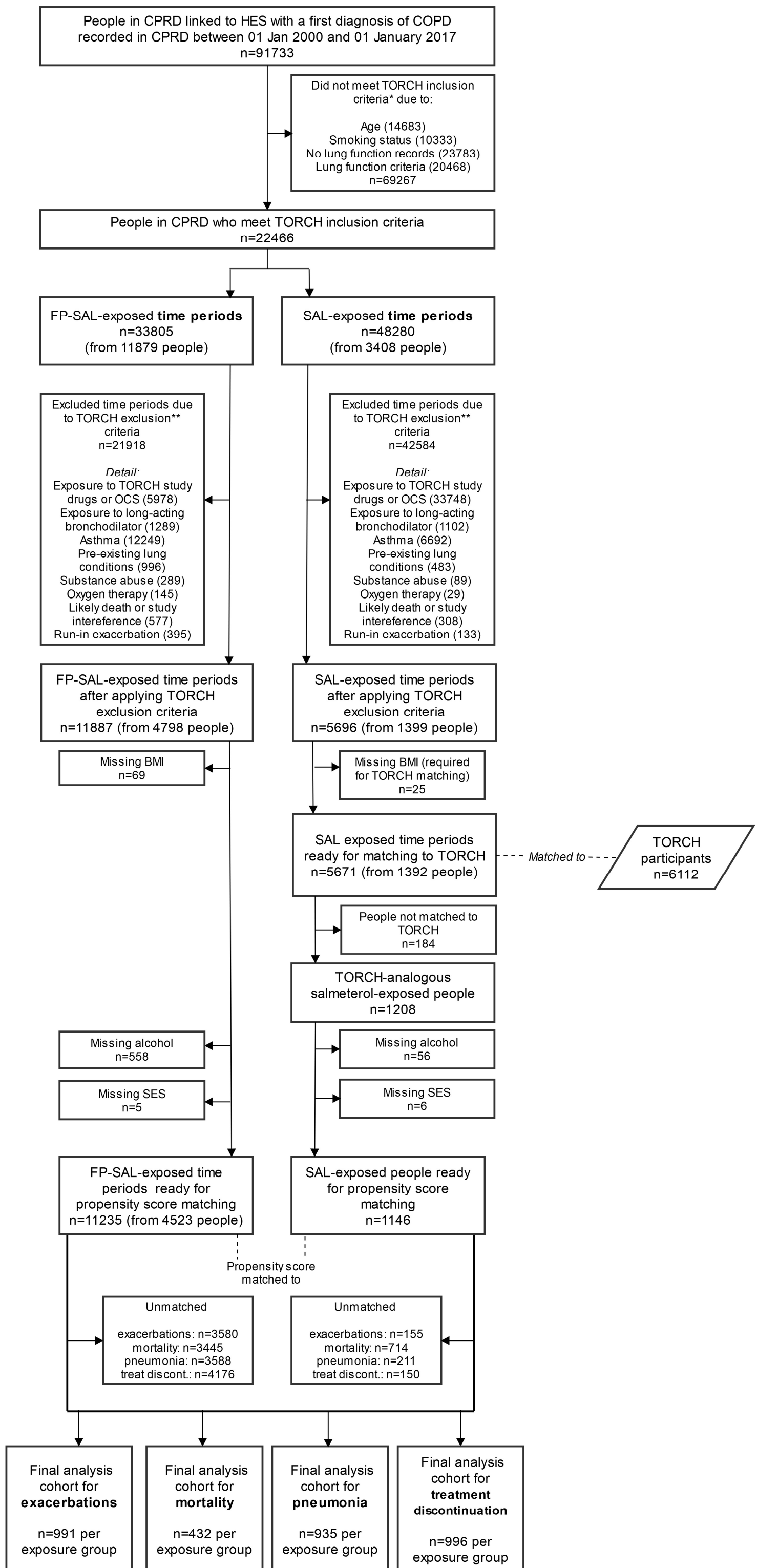
- [Internet]. *Lancet* 2004 [cited 2016 Aug 2]. p. 1724–1727 Available from: www.thelancet.com.
8. Vandenbroucke JP. The HRT controversy: observational studies and RCTs fall in line. *Lancet* 2009; 373: 1233–1235.
 9. Danaei G, Rodríguez LAG, Cantero OF, Logan R, Hernán MA. Observational data for comparative effectiveness research: an emulation of randomised trials of statins and primary prevention of coronary heart disease. *Stat. Methods Med. Res.* [Internet] NIH Public Access; 2013 [cited 2016 Nov 14]; 22: 70–96 Available from: <http://www.ncbi.nlm.nih.gov/pubmed/22016461>.
 10. Douglas IJ, Evans SJ, Pocock S, Smeeth L. The risk of fractures associated with thiazolidinediones: A self-controlled case-series study. *PLoS Med.* [Internet] Public Library of Science; 2009 [cited 2016 Sep 30]; 6: e1000154 Available from: <http://dx.plos.org/10.1371/journal.pmed.1000154>.
 11. Langan SM, Smeeth L, Margolis DJ, Thomas SL. Herpes Zoster Vaccine Effectiveness against Incident Herpes Zoster and Post-herpetic Neuralgia in an Older US Population: A Cohort Study. *PLoS Med.* [Internet] Public Library of Science; 2013 [cited 2016 Sep 30]; 10: e1001420 Available from: <http://dx.plos.org/10.1371/journal.pmed.1001420>.
 12. Schneeweiss S, Seeger JD, Landon J, Walker AM. Aprotinin during Coronary-Artery Bypass Grafting and Risk of Death. *N. Engl. J. Med.* [Internet] Massachusetts Medical Society; 2008 [cited 2020 Mar 13]; 358: 771–783 Available from: <http://www.nejm.org/doi/abs/10.1056/NEJMoa0707571>.
 13. Hernán MA, Alonso A, Logan R, Grodstein F, Michels KB, Stampfer MJ, Willett WC, Manson JE, Robins JM. Observational studies analyzed like randomized experiments: an application to postmenopausal hormone therapy and coronary heart disease. *Epidemiology* 2013; 19: 766–779.
 14. Smeeth L, Douglas I, Hall AJ, Hubbard R, Evans S. Effect of statins on a wide range of health outcomes: A cohort study validated by comparison with randomized trials. *Br. J. Clin.*

- Pharmacol.* [Internet] Wiley-Blackwell; 2009 [cited 2016 Sep 30]; 67: 99–109 Available from: <http://www.ncbi.nlm.nih.gov/pubmed/19006546>.
15. Fralick M, Kesselheim AS, Avorn J, Schneeweiss S. Use of health care databases to support supplemental indications of approved medications. *JAMA Intern. Med.* 2018; 178: 55–63.
 16. Nannini LJ, Lasserson TJ, Poole P. Combined corticosteroid and long-acting beta2-agonist in one inhaler versus long-acting beta2-agonists for chronic obstructive pulmonary disease. *Cochrane Database Syst. Rev.* John Wiley and Sons Ltd; 2012.
 17. Soriano JB, Vestbo J, Pride NB, Kin V, Maden C, Maier WC. Survival in COPD patients after regular use of fluticasone propionate and salmeterol in general practice. *Eur. Respir. J.* European Respiratory Society; 2002; 20: 819–825.
 18. Mapel DW, Hurley JS, Roblin D, Roberts M, Davis KJ, Schreiner R, Frost FJ. Survival of COPD patients using inhaled corticosteroids and long-acting beta agonists. *Respir. Med. W.B.* Saunders; 2006; 100: 595–609.
 19. Suissa S. Inhaled steroids and mortality in COPD: Bias from unaccounted immortal time. *Eur. Respir. J. Eur Respir J*; 2004; 23: 391–395.
 20. Suissa S, Patenaude V, Lapi F, Ernst P. Inhaled corticosteroids in COPD and the risk of serious pneumonia. *Thorax* BMJ Publishing Group Ltd; 2013; 68: 1029–1036.
 21. Ernst P, Gonzalez A V., Brassard P, Suissa S. Inhaled Corticosteroid Use in Chronic Obstructive Pulmonary Disease and the Risk of Hospitalization for Pneumonia. *Am. J. Respir. Crit. Care Med.* [Internet] American Thoracic Society; 2007 [cited 2020 Feb 19]; 176: 162–166 Available from: <http://www.atsjournals.org/doi/abs/10.1164/rccm.200611-1630OC>.
 22. Suissa S, Dell’Aniello S, Ernst P. Comparative effectiveness of LABA-ICS versus LAMA as initial treatment in COPD targeted by blood eosinophils: a population-based cohort study. *Lancet Respir. Med.* Lancet Publishing Group; 2018; 6: 855–862.
 23. Bogart M, Stanford RH, Laliberté F, Germain G, Wu JW, Duh MS. Medication adherence and

persistence in chronic obstructive pulmonary disease patients receiving triple therapy in a USA commercially insured population. *Int. J. COPD* Dove Medical Press Ltd.; 2019; 14: 343–352.

24. Mueller S, Wilke T, Bechtel B, Puneekar YS, Mitzner K, Virchow JC. Non-persistence and non-adherence to long-acting COPD medication therapy: A retrospective cohort study based on a large German claims dataset. *Respir. Med.* W.B. Saunders Ltd; 2017; 122: 1–11.
25. Kyriacou DN, Lewis RJ, Rothman K, Andersen L, Greenland S, Tolles J, Haukoos J, Szklo M, Z F. Confounding by Indication in Clinical Research. *JAMA* [Internet] American Medical Association; 2016 [cited 2016 Nov 7]; 316: 189–212 Available from: <http://jama.jamanetwork.com/article.aspx?doi=10.1001/jama.2016.16435>.





Supplementary Material

Appendix 1 – supplementary materials for methods and analysis

Appendix 2 – supplementary material for results

Appendix 1 – supplementary materials for methods and analysis

Setting/data sources

TORCH

TORCH was a placebo controlled randomised trial of the combined inhaler fluticasone propionate (FP) + salmeterol (SAL) (FP-SAL) for the treatment of COPD, published in 2007 [ref to TORCH]. Key findings were a lower rate of exacerbations associated with use of FP-SAL, and a higher rate of pneumonia (when compared to placebo and when compared to the active comparator SAL). As one of the largest trials of COPD drug treatments, and with a three year follow up, TORCH is a landmark study, providing a validation point for our study. Individual patient data from the TORCH study were obtained from the study sponsor (GSK) via www.clinicalstudydatarequest.com.

CPRD

The CPRD is a very large database of nationally representative prospectively collected, anonymised UK population-based electronic health records containing comprehensive information on clinical diagnoses, prescribing, referrals, tests and demographic/lifestyle factors.[1] In order to contribute to the database, general practices and other health centres must meet prespecified standards for research-quality data (i.e. be “up to standard”).[1, 2] A patient starts contributing follow-up time to the database at the date they join an “up to standard” practice (or the date that their practice starts contributing up to standard data), and stop contributing follow-up time on either their death date, their transfer out date (the date that they leave the database due to reasons other than death) or on the last collection date for their practice. Linkage between the primary care records in CPRD and hospital episode statistics (HES) is well established for around 60% of practices in the CPRD, providing a data set augmented with detailed secondary care diagnostic and procedural records. Algorithms have been established to detect COPD, COPD exacerbations and pneumonia (both hospital and primary care managed) in CPRD/HES linked data (including validated algorithms for COPD and exacerbations).[3, 4] See supplementary materials of Wing et al for a high-level overview of these algorithms.[5]

Selection of participants – TORCH inclusion and exclusion criteria

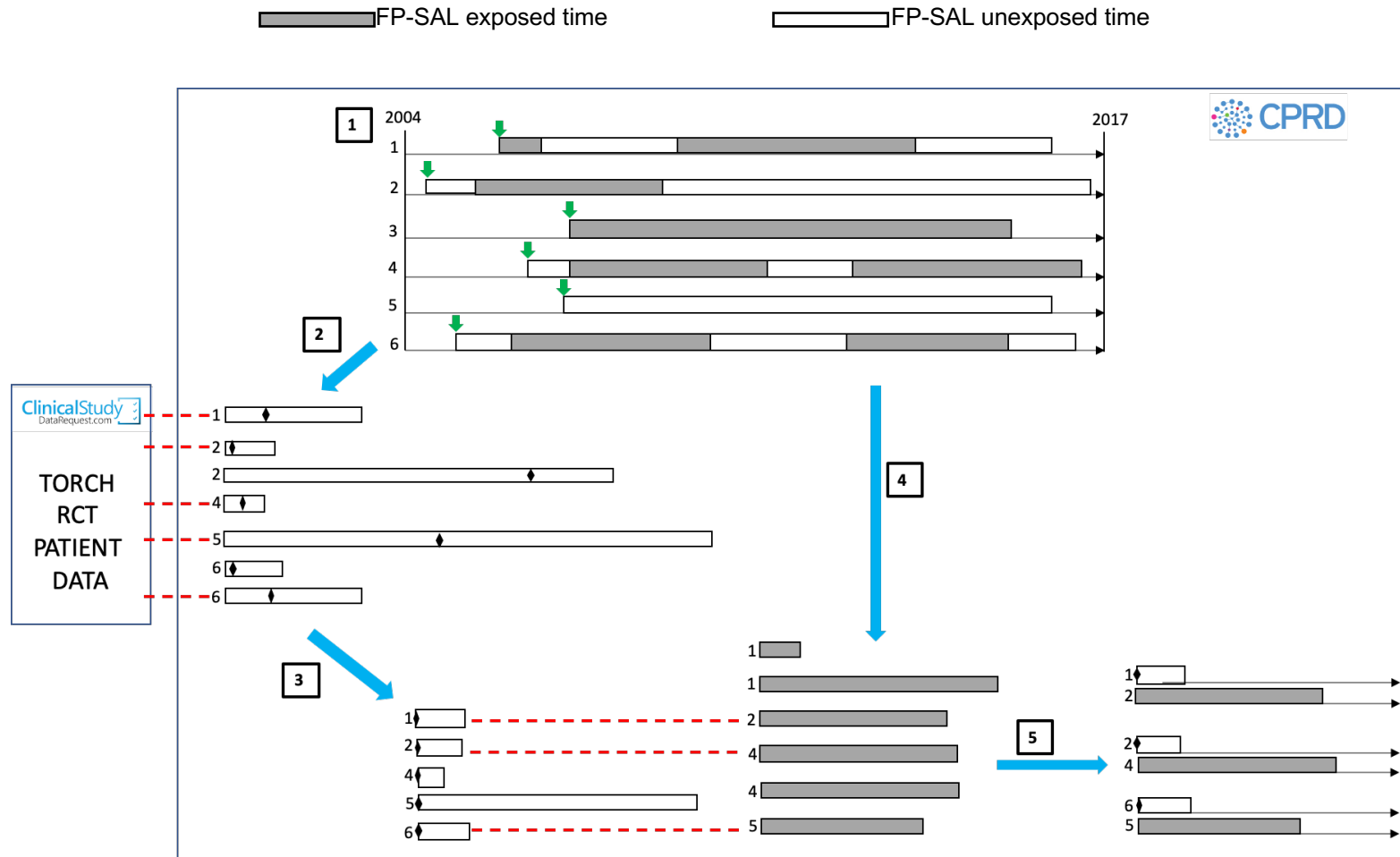
Table A1-1 – TORCH inclusion and exclusion criteria applied

TORCH inclusion criteria applied to cohort
1. a diagnosis of COPD
2. 40-80 years of age
3. smoking status of “current” or “ex-“
4. lung function criteria of FEV ₁ <60% predicted and FEV ₁ /FVC ratio <70% (where FEV ₁ is the forced expiratory volume in 1 second and FVC is the forced vital capacity).
TORCH exclusion criteria applied to cohort
Previous drug exposure criteria
1. any exposure to any of the TORCH study drugs (FP-SAL, SAL or FP) within the previous 4 weeks
2. current use of a long-acting bronchodilator ¹
3. current use of oral corticosteroid therapy ²
Remaining exclusion criteria (after applying drug exposure criteria) – all at any time prior to the index date unless specified
1. a diagnosis of asthma (within the previous 5 years)
2. a diagnosis for any (non-COPD) respiratory disorder
3. a record of lung surgery
4. a diagnosis of alpha-1 antitrypsin deficiency
5. a record of having received long-term oxygen therapy
6. diagnoses for conditions likely to interfere with the TORCH trial or to cause death within the 3 years following the index date
7. record of an exacerbation requiring oral corticosteroid therapy or hospitalisation during the period equivalent to the trial “run-in” period (the 2-week period following the index date)

¹: current use of a long-acting bronchodilator defined in the CPRD population as any prescription for a long-acting bronchodilator occurring within the period that one of the study drugs was prescribed (or that ended within 7 days prior to the start of a prescription for one of the study drugs).

²: current use of oral corticosteroid therapy in TORCH was defined as continuous use for >6 weeks, with courses of oral corticosteroids separated by a period of <7 days considered as continuous use. We applied the same approach to the CPRD population to define exclusion due to exposure to OCS.

Figure A1-1: Management of FP-SAL exposed and FP-SAL unexposed time periods in selection of people from CPRD



Step 1 – selection of all potentially eligible patients. 6 example patients in CPRD. Green arrow=date at which individual meets TORCH inclusion criteria. Grey time periods=FP-SAL exposed, white time periods=FP-SAL unexposed. **Step 2 - selection of pool of unexposed patients.** Green arrows: date at which patient meets all TORCH inclusion criteria. Unexposed time periods selected and exclusion criteria related to drug exposures applied. Unexposed record index date is then assigned as a random date within each unexposed period (indicated by diamond symbols), and further TORCH exclusion criteria applied based upon this date. In this example one unexposed record from each of person 1, 4 and 6 are excluded prior to step 3. **Step 3 – selection of unexposed to FP-SAL time periods by 1:1 matching to TORCH participants.** Dotted red lines indicate matching, matching characteristics assessed on index date of specific unexposed time period, only one time period per person could be matched to TORCH. **Step 4 - selection of exposed to FP-SAL time periods and application of TORCH exclusion criteria.** In this example, one exposed time period from person 3 and 6 is excluded based on TORCH exclusion criteria. **Step 5 – selection of comparable FP-SAL exposed participants.** Pre-matching, there is one record per person for the FP-SAL unexposed cohort and one or more per person for the FP-SAL exposed cohort, after matching there are an equal number of each. The same individual could appear in both unexposed and exposed cohorts, with

differing date of start of follow-up. Exposed and unexposed records are then followed up and analysed from index date onwards following an “intention to treat” approach.

Selection of participants – note related to Step 3

Based on the fact that TORCH randomisation resulted in highly comparable groups (Table 1 of [6]), we assumed that it would not matter whether we matched our FP-SAL unexposed time periods to the TORCH placebo group only or to all of the TORCH participants. The approach we selected was to match our FP-SAL unexposed records to all of the TORCH participants. As a post-hoc analysis to test our assumption, we examined the matched TORCH participants by intervention group – if our assumption was valid then we would expect to see that the proportion of matched TORCH participants from each intervention group was the same. The results are tabulated below, showing that there was an equal distribution by intervention group across the 4359 matched TORCH participants.

TORCH treatment group	n	%
FP-SAL	1090	25.00
Placebo	1111	25.48
Salmeterol	1071	24.58
Fluticasone	1087	24.95
	(4359)	(100.00)

Selection of participants – FP-SAL exposed vs SAL exposed (differences in participant selection procedure compared to FP-SAL exposed vs unexposed)

The participant selection approach was analogous to the FP-SAL exposed v versus FP-SAL unexposed participant selection, except the comparator group selected was those exposed to SAL (rather than those unexposed to FP-SAL). The resulting differences in participant selection are as follows. For Step 1, the study period was from 1st January 2000 to 1st January 2017 (increased to ensure sufficient numbers of eligible SAL-exposed individuals). For Step 2, instead of selecting unexposed to FP-SAL time periods occurring on or after the eligible-for-TORCH inclusion date, we selected periods of SAL exposure. Individuals in CPRD who had more than one SAL-exposed eligibility period within their record were able to contribute more than once to the pool of SAL-exposed participants (with the covariates and person-time contributed unique to the specific SAL-exposed eligibility period). The index date for each SAL-exposed record was the first date of the eligible SAL exposure period (i.e. first day of the SAL prescription). All other aspects of Step 2 and Steps 3 – 6 were then as described for the FP-SAL exposed vs FP-SAL unexposed participant selection (with SAL exposed records in place of FP-SAL unexposed records wherever mentioned).

Exposures, outcomes and co-variables

Exposures – further details on management of drug exposure data

In addition to FP-SAL and SAL, periods of exposure to oral corticosteroids (OCS), inhaled corticosteroids (ICS), fluticasone propionate (FP), any long action muscarinic antagonist (LAMA) or any long-acting beta agonist (LABA) were identified, in order to facilitate application of the inclusion and exclusion criteria described in the “Selection of participants” section.

For all drug exposures, duration of an exposure period was derived by multiplying the CPRD *quantity* variable by any relevant dose information stored in the *packtype* variable and then dividing by the value in the *numeric daily dose* CPRD variable. For example, for a prescription record with *quantity*=1, *packtype*="60 dose inhaler", and *numeric daily dose*=2, the duration of the exposure period was $(1*60)/2=30$ days. For prescription records where it was not possible to calculate this exposure period (due to e.g. a missing *quantity* variable), the median value for that specific drug substance and packtype combination was imputed as the exposure duration. In order to attempt to account for any uncertainty in the end date of an exposure period (due to, for example, people not taking the medicine as directed or relying on additional medication previously described and kept at home), a grace period of half the median duration for the specific drug substance/pack type combination was added to the calculated exposure duration in order to estimate the end date of the exposure period.

Outcomes – further details on outcome definitions

Outcomes were defined as follows:

1. COPD exacerbation: defined using a CPRD-HES algorithm developed previously by authors of this study. [3]
2. All-cause mortality: as recorded in Office of National Statistics (ONS) mortality statistics (data that is linked to CPRD data).
3. Pneumonia: as defined using a CPRD-HES algorithm published previously by authors of this study.[7]
4. Time to COPD treatment discontinuation, with treatment discontinuation classified as a period of 90 days or more with no further prescription for the specific drug.

Covariates

Covariates available for inclusion in the propensity score models included lung function, age, sex, alcohol consumption, vascular disease, prescriptions for aspirin or statins, prior treatment with other COPD medication, type II diabetes, history of cancer, renal disease and healthcare utilisation (rate of: consultations, hospitalisations, hospital procedures, drug prescriptions).

Statistical analysis

Methods of analysis – intention to treat

The “intention to treat” design meant that if a participant entered the study as either an FP-SAL exposed or an FP-SAL unexposed participant (or a SAL exposed participant), they remained assigned to that exposure category for the entire duration of their follow-up (irrespective as to whether their true exposure status changes). This mirrored the TORCH design.

Validation of results against TORCH - comparability criteria

Our FP-SAL vs no FP-SAL treatment analysis results were validated against TORCH by determining compatibility with the TORCH exacerbations rate ratio for FP-SAL versus placebo (0.75; 95% CI 0.69 to 0.81). We set two criteria that needed to be met for us to conclude that results were consistent [protocol ref]. First, the effect size needed to be clinically comparable with TORCH findings; the rate ratio for exacerbations in CPRD must be between 0.65 and 0.9. As this rule could have been met with a poorly powered, inconclusive result, our second criterion was that the 95% CI for the rate ratio must exclude 1. For the FP-SAL vs SAL, the criterion we set were that the 95% CI needed to exclude 1, and the rate ratio needed to be between 0.81 and 0.95 (compared with the TORCH FP-SAL vs SAL result of 0.88, 95% CI 0.81 to 0.95).

Analysis of impact of (1) TORCH matching (2) TORCH criteria (post-hoc analysis)

A post-hoc analysis was performed assessing the impact of (1) omitting TORCH matching and (2) omitting both TORCH matching and the application of TORCH trial inclusion/exclusion criteria. This was performed for the FP-SAL vs SAL exacerbations analysis, and effect estimates tabulated and compared with TORCH and each other. As for the main analysis, all exposure comparison groups were propensity score matched to each other, and the final number in each propensity score matched group was tabulated along with the effect estimates and 95% confidence intervals, in order to help assess the impact on both effect size/precision and sample size of applying the different selection methods.

Appendix 2 – supplementary materials for results

Table A2-1: Characteristics of the CPRD non-interventional COPD cohort for the FP-SAL vs no FP-SAL comparison showing (1) the cohort of all HES-linked patients in CPRD with a COPD diagnosis (2) the cohort after applying TORCH inclusion/exclusion criteria (unexposed to FP-SAL group only) and (2) the cohort after applying TORCH and inclusion/criteria and matching to TORCH participants (unexposed to FP-SAL group only), in comparison to the baseline characteristics of the TORCH trial placebo group.

Variable – n(%) unless specified	CPRD non-interventional population			TORCH trial
	All	Unexposed to FP-SAL		Placebo group
	No TORCH criteria or TORCH matching applied ¹ (N=45939 patients)	After applying TORCH inclusion/exclusion criteria ² (N=17176 unexposed time periods from 10193 people)	After matching ³ to individual TORCH patients (N=4359 unexposed people)	(N=1524 trial participants)
Age – year (median(IQR))	65 (58-74)	68.0 (61.0-73.0)	67.0 (61.0-73.0)	65 (59-71)
Male sex	24182 (53)	10671 (62)	3307 (76)	1163 (76)
Body-mass index (median(IQR))	26.7 (23.4-30.7)	26.3 (22.6-30.4)	25.5 (22.1-29.0)	25.0 (22.0-28.4)
Exacerbations requiring hospitalisation (mean±SD) ⁴	0.1 (0.9)	0.0 (0.3)	0.1 (0.3)	0.2 (0.7)
History of cardiovascular disease	11564 (25)	4888 (28)	1987 (46)	784 (51)
Lung function: FEV₁ - % of predicted ⁵ (median(IQR))	66.3 (51.6-81.33)	51.7 (41.8-59.0)	47.2 (37.3-56.1)	44.2 (35.0-54.0)

Note 1: Includes all people in CPRD between 2004 – 2016 with a diagnosis for COPD who have spirometry data recorded. All variables in this column measured at the date of COPD diagnosis recorded in CPRD. **Note 2:** Inclusion criteria: diagnosis of COPD, age 40-80 years, all current or ex-smokers, lung function FEV₁<60% predicted, FEV₁/FVC ratio<70%. Exclusion criteria: diagnosis of asthma within the previous 5 years, diagnosis for any non-COPD respiratory disorder, a record of lung surgery, a diagnosis of alpha-1 antitrypsin deficiency, evidence of drug or alcohol abuse, a record of having received long-term oxygen therapy, diagnoses likely to interfere with the TORCH trial or cause death within 3 years, current use of oral corticosteroid therapy, any exposure to FP/SAL within the previous 4 weeks. All variables in this column measured at the earliest date that all inclusion criteria were met and all exclusion criteria were not met. **Note 3:** Matched on all variables in this table. **Note 4:** Within prior year. **Note 5:** FEV₁=Forced expiratory volume in 1 second.

Table A2-2: Characteristics of the CPRD non-interventional COPD cohort for the FP-SAL vs SAL analysis showing (1) the cohort of patients in CPRD with a COPD diagnosis (2) the cohort after applying TORCH inclusion/exclusion criteria (exposed to SAL group) and (2) the cohort after applying TORCH and inclusion/criteria and matching to TORCH participants (exposed to SAL group), in comparison to the baseline characteristics of the TORCH trial salmeterol group.

Variable – n(%) unless specified	CPRD non-interventional population			TORCH trial
	All	Exposed to salmeterol		Salmeterol group
	No TORCH criteria or TORCH matching applied ¹ (N=53099 people)	After applying TORCH inclusion/exclusion criteria ² (N=5671 salmeterol-exposed time periods from 1392 people)	After matching ³ to individual TORCH patients (N=1208 salmeterol-exposed people)	(N=1524 trial participants)
Age – year (median(IQR))	66.0 (58.0-74.0)	68.0 (63.0-74.0)	68.0 (62.0-73.0)	65.1 (60.0-71.0)
Male sex	35045 (53)	3415 (60)	767 (63)	1160 (76)
Body-mass index (median(IQR))	25.8 (23.0-29.1)	26.9 (23.3-30.8)	26.2 (23.0-29.9)	24.8 (21.9-28.3)
Exacerbations requiring hospitalisation (mean±SD) ⁴	0.0 (0.3)	0.0 (0.1)	0.0 (0.2)	0.2 (0.6)
History of cardiovascular disease	13274 (25)	1689 (30)	374 (31)	807 (53)
Lung function: FEV₁ - % of predicted⁵ (median(IQR))	63.2 (49.1-76.8)	52.6 (43.4-61.1)	49.4 (40.5-57.1)	43.4 (33.8-53.4)

Note 1: Includes all people in CPRD between 2000 – 2016 with a diagnosis for COPD who have spirometry data recorded. All variables in this column measured at the date of first salmeterol exposure. **Note 2:** Inclusion criteria: diagnosis of COPD, age 40-80 years, all current or ex-smokers, lung function FEV₁<60% predicted, FEV₁/FVC ratio<70%. Exclusion criteria: diagnosis of asthma within the previous 5 years, diagnosis for any non-COPD respiratory disorder, a record of lung surgery, a diagnosis of alpha-1 antitrypsin deficiency, evidence of drug or alcohol abuse, a record of having received long-term oxygen therapy, diagnoses likely to interfere with the TORCH trial or cause death within 3 years, current use of oral corticosteroid therapy, any exposure to any of the study drugs within the previous 4 weeks. All variables in this column measured at the earliest date that all inclusion criteria were met and all exclusion criteria were not met. **Note 3:** Matched on all variables in this table. **Note 4:** Within prior year. **Note 5:** FEV₁=Forced expiratory volume in 1 second.

Propensity score matching of CPRD cohorts

Table A2-3 - Variables included in the final propensity score models

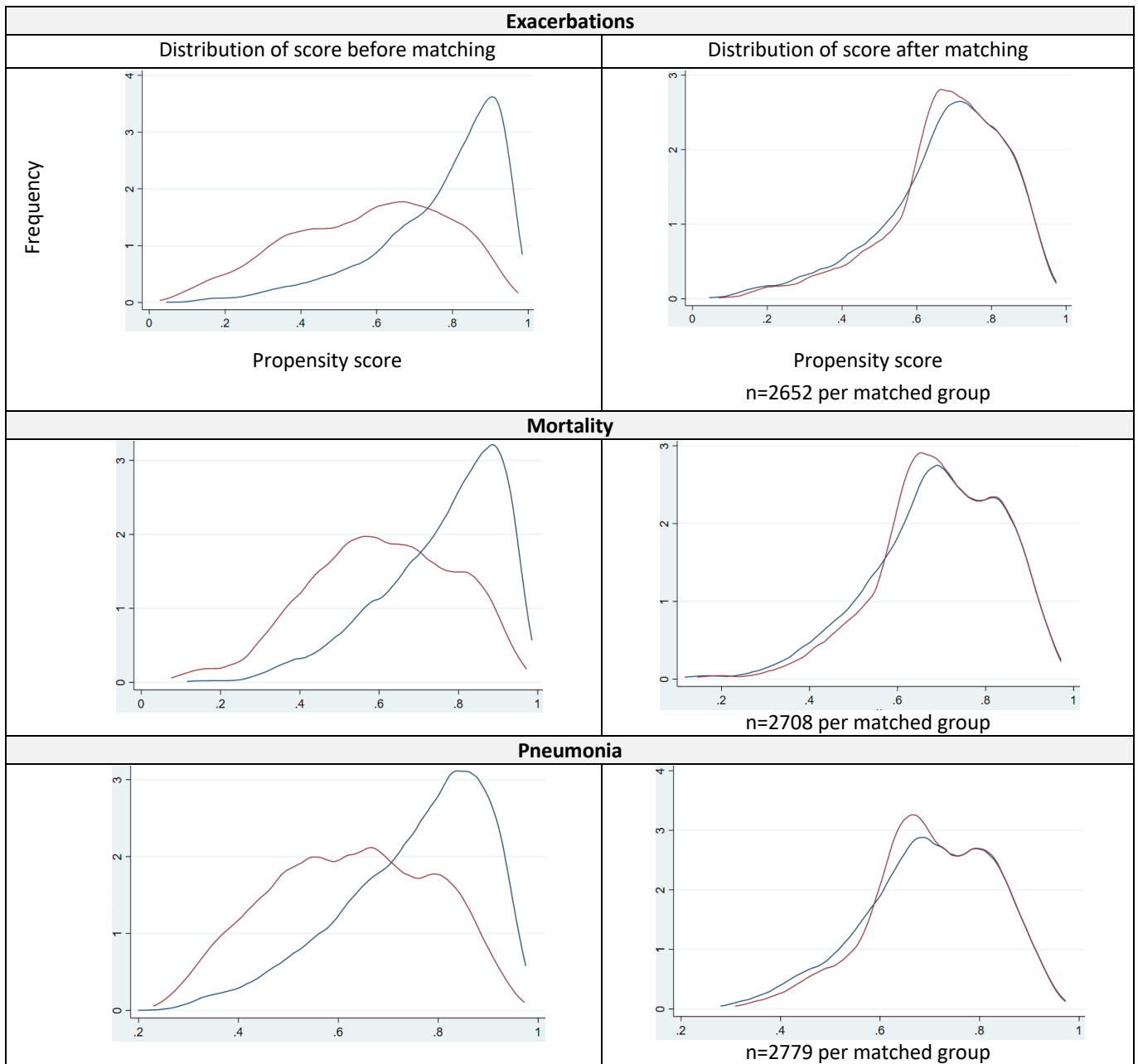
Analysis	Variables included in propensity score model	Matching
FP-SAL versus unexposed to FP-SAL analysis		
Exacerbations	Sex, age, FEV ₁ , FEV ₁ /FVC ₂ , BMI, year of index date, previous diagnosis of cerebrovascular disease, having at least one prescription of (1) statin (2) ICS (3) LABA_ICS (4) LAMA in the previous year and the frequency of consultations, prescriptions, hospitalisations, hospital procedures and exacerbations in the previous year.	1:1 nearest neighbour, caliper of 0.03
Mortality	Sex, age, FEV ₁ , FEV ₁ /FVC ₂ , BMI, SES, previous diagnosis of (1) coronary heart disease (2) peripheral vascular disease (3) cerebrovascular disease, having at least one prescription of (1) LAMA (2) LABA_ICS in the previous year and the frequency of consultations, prescriptions, hospitalisations and exacerbations in the previous year.	1:1 nearest neighbour, caliper of 0.03
Pneumonia	Sex, age, FEV ₁ , FEV ₁ /FVC ₂ , BMI, alcohol, previous diagnosis of (1) coronary heart disease (2) peripheral vascular disease (3) cerebrovascular disease, having at least one prescription of (1) LAMA (2) aspirin in the previous year and the frequency of prescriptions, hospitalisations and exacerbations in the previous year.	1:1 nearest neighbour, caliper of 0.03
FP-SAL versus SAL analysis		
Exacerbations	Sex, FEV ₁ , previous diagnoses for (1) Type 2 diabetes (2) chronic kidney disease, year of index date, having at least one prescription of an ICS in the previous year and the frequency of, consultations, hospitalisations and hospital procedures in the previous year.	1:1 nearest neighbour, caliper of 0.03
Mortality	Sex, age, year of index date, BMI, SES, FEV ₁ , FEV ₁ /FVC ₂ , diagnoses for: (1) peripheral vascular disease (2) coronary heart disease (3) cerebrovascular disease (4) Type 2 diabetes (5) cancer (6) chronic kidney disease; having at least one prescription of (1) statin (2) aspirin (3) LAMA (4) LABA (5) LABA_ICS in the previous year and the frequency of consultations, exacerbations, prescriptions, hospitalisations and hospital procedures in the previous year.	1:1 nearest neighbour, caliper of 0.03
Pneumonia	FEV ₁ , year of index date, SES, diagnoses for chronic kidney disease, and the frequency of: consultations, prescriptions, hospitalisations and hospital procedures in the previous year.	1:1 nearest neighbour, caliper of 0.03
Time to treatment discontinuation	FEV ₁ , FEV ₁ /FVC ₂ , alcohol intake, SES, year of index date, diagnoses for: (1) peripheral vascular disease (2) coronary heart disease (3) cancer (4) chronic kidney disease; having	1:1 nearest neighbour, caliper of 0.03

Analysis	Variables included in propensity score model	Matching
	at least one prescription of (1) statin (2) aspirin (3) ICS (4) LABA_ICS in the previous year and the frequency of consultations, exacerbations, prescriptions, hospitalisations and hospital procedures in the previous year.	

Figure A2-1 – propensity score distributions before and after matching*

FP-SAL exposed (n=10926 before matching) versus FP-SAL unexposed (n=4391 before matching)

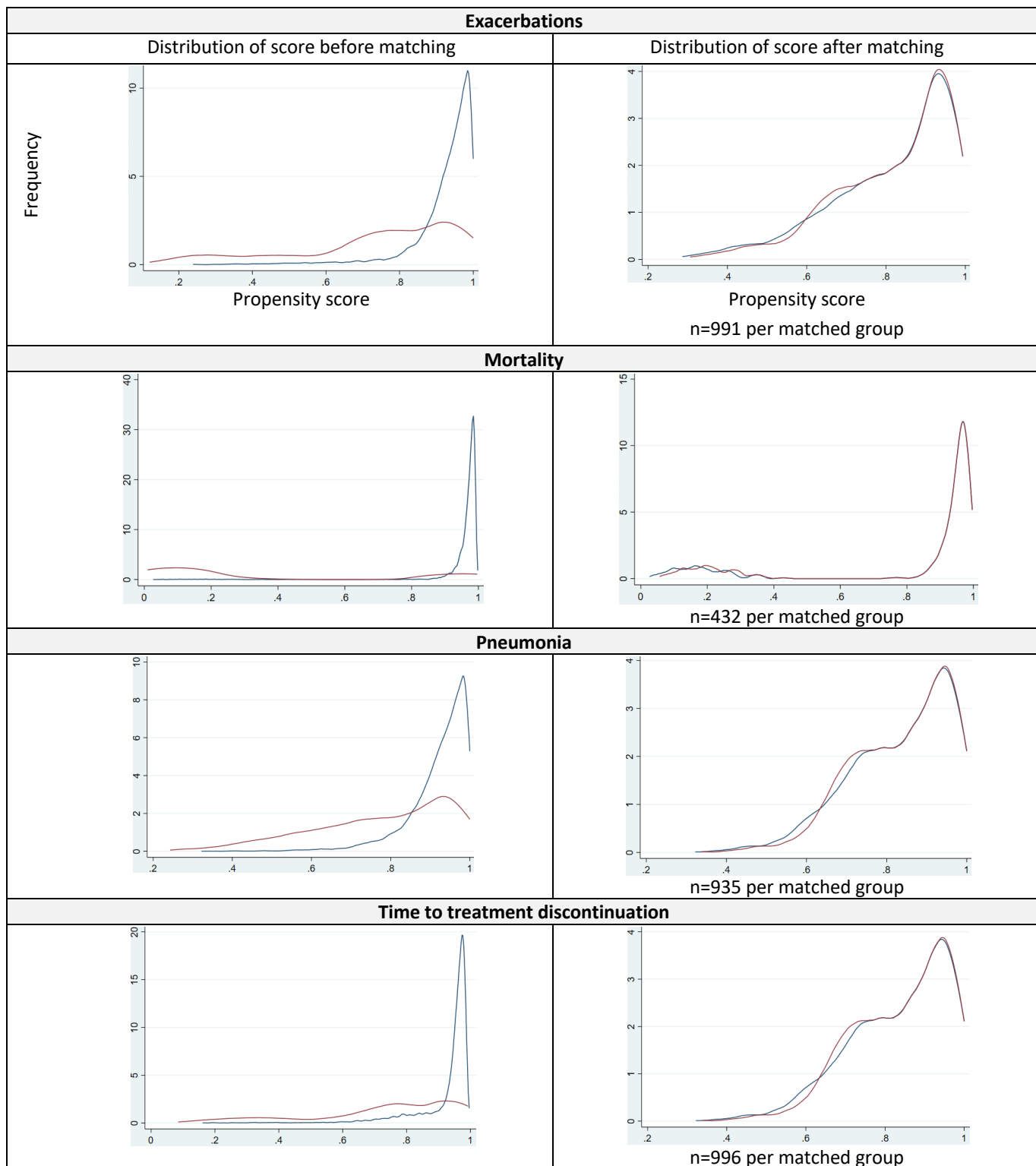
— exposed to FP-SAL
 — unexposed to FP-SAL



*Treatment discontinuation not included for this analysis as only one of the exposure groups was receiving treatment

FP-SAL exposed (n=11235 before matching) versus SAL exposed (n=1146 before matching)

— exposed to FP-SAL
 — exposed to SAL



References for the supplementary material

1. Herrett E, Gallagher AM, Bhaskaran K, Forbes H, Mathur R, Staa T van, Smeeth L. Data Resource Profile: Clinical Practice Research Datalink (CPRD). *Int. J. Epidemiol.* [Internet] Oxford University Press; 2015 [cited 2016 Sep 30]; 44: 827–836 Available from: <http://www.ncbi.nlm.nih.gov/pubmed/26050254>.
2. Herrett E, Thomas SL, Schoonen WM, Smeeth L, Hall AJ. Validation and validity of diagnoses in the General Practice Research Database: a systematic review. *Br. J. Clin. Pharmacol.* [Internet] Wiley-Blackwell; 2010 [cited 2017 May 26]; 69: 4–14 Available from: <http://www.ncbi.nlm.nih.gov/pubmed/20078607>.
3. Quint JK, Müllerova H, DiSantostefano RL, Forbes H, Eaton S, Hurst JR, Davis K, Smeeth L. Validation of chronic obstructive pulmonary disease recording in the Clinical Practice Research Datalink (CPRD-GOLD). *BMJ Open* [Internet] British Medical Journal Publishing Group; 2014 [cited 2016 Sep 30]; 4: e005540 Available from: <http://www.ncbi.nlm.nih.gov/pubmed/25056980>.
4. Rothnie KJ, Müllerová H, Hurst JR, Smeeth L, Davis K, Thomas SL, Quint JK. Validation of the Recording of Acute Exacerbations of COPD in UK Primary Care Electronic Healthcare Records. Chotirmall SH, editor. *PLoS One* [Internet] Public Library of Science; 2016 [cited 2017 May 26]; 11: e0151357 Available from: <http://dx.plos.org/10.1371/journal.pone.0151357>.
5. Wing K, Williamson E, Carpenter JR, Wise L, Schneeweiss S, Smeeth L, Quint JK, Douglas I. Real-world effects of medications for chronic obstructive pulmonary disease: protocol for a UK population-based non-interventional cohort study with validation against randomised trial results. *BMJ Open* [Internet] British Medical Journal Publishing Group; 2018 [cited 2018 Apr 19]; 8: e019475 Available from: <http://www.ncbi.nlm.nih.gov/pubmed/29581202>.
6. Calverley PMA, Anderson JA, Celli B, Ferguson GT, Jenkins C, Jones PW, Yates JC, Vestbo J. Salmeterol and Fluticasone Propionate and Survival in Chronic Obstructive Pulmonary Disease. *N. Engl. J. Med.* [Internet] Massachusetts Medical Society; 2007 [cited 2016 Aug 4]; 356: 775–789 Available from: <http://www.nejm.org/doi/abs/10.1056/NEJMoa063070>.
7. Millett ERC, Quint JK, Smeeth L, Daniel RM, Thomas SL. Incidence of Community-Acquired Lower Respiratory Tract Infections and Pneumonia among Older Adults in the United Kingdom: A Population-Based Study. Heimesaat MM, editor. *PLoS One* [Internet] Department of Health; 2013 [cited 2017 May 26]; 8: e75131 Available from: <http://dx.plos.org/10.1371/journal.pone.0075131>.