



Early View

Original article

The Associations of Interstitial Lung Abnormalities with Cancer Diagnoses and Mortality

Gisli T. Axelsson, Rachel K. Putman, Thor Aspelund, Elias F. Gudmundsson, Tomayuki Hida, Tetsuro Araki, Mizuki Nishino, Hiroto Hatabu, Vilmundur Gudnason, Gary M. Hunninghake, Gunnar Gudmundsson

Please cite this article as: Axelsson GT, Putman RK, Aspelund T, *et al.* The Associations of Interstitial Lung Abnormalities with Cancer Diagnoses and Mortality. *Eur Respir J* 2020; in press (<https://doi.org/10.1183/13993003.02154-2019>).

This manuscript has recently been accepted for publication in the *European Respiratory Journal*. It is published here in its accepted form prior to copyediting and typesetting by our production team. After these production processes are complete and the authors have approved the resulting proofs, the article will move to the latest issue of the ERJ online.

The Associations of Interstitial Lung Abnormalities with Cancer Diagnoses and Mortality

Gisli T. Axelsson BSc¹, Rachel K. Putman MD MPH², Thor Aspelund PhD^{1,3}, Elias F. Gudmundsson MSc³, Tomayuki Hida^{4,5}, Tetsuro Araki MD^{4,5}, Mizuki Nishino MD MPH^{4,5}, Hiroto Hatabu MD PhD^{4,5}, Vilmundur Gudnason MD PhD^{1,3}, Gary M. Hunninghake MD MPH^{2,5}, Gunnar Gudmundsson MD PhD^{1,6}

¹University of Iceland, Faculty of Medicine, Reykjavik, Iceland; ²Pulmonary and Critical Care Division, Brigham and Women's Hospital, Harvard Medical School, Boston MA; ³Icelandic Heart Association, Kopavogur, Iceland; ⁴Department of Radiology, Brigham and Women's Hospital, Harvard Medical School, Boston, MA; ⁵Center for Pulmonary Functional Imaging, Brigham and Women's Hospital, Harvard Medical School, Boston, MA; ⁶Department of Respiratory Medicine, Landspítali University Hospital, Reykjavik, Iceland.

Correspondence:

Gisli Thor Axelsson, BSc
Faculty of Medicine
University of Iceland
Saemundargata 2
102 Reykjavik
Iceland
E-mail: gtha7@hi.is
Phone: +354-845-7944

Author contributions:

Study Design: GTA, RKP, TA, HH, VG, GMH and GG

Acquisition or interpretation of the data: GTA, RKP, TA, EFG, TH, TA, MN, HH, VG, GMH and GG.

Critical revision of the manuscript for important intellectual content: GTA, RKP, TA, EFG, TH, TA, MN, HH, VG, GMH and GG.

Statistical analysis: GTA, TA, GMH and EFG.

Obtained funding: GG, VG, and GMH.

Supported by NIH grants K08 HL140087 (RKP); R01 CA203636 (MN), R01 HL111024, R01 HL130974, R01 135142 (GMH). Supported by NIA grant 27120120022C (VG). Supported by the Icelandic Research Fund, project grant 141513-051 (GG, VG and GMH). Supported by Oddur Olafsson Fund, and Landspítali Scientific Fund A-2015-030 and A-2016-023 (GG). The Age, Gene/Environment Susceptibility-Reykjavik Study was supported by NIH contracts N01-AG-1-2100 and HHSN27120120022C, the NIA Intramural Research Program, Hjartavernd (the Icelandic Heart Association), and the Althingi (the Icelandic Parliament).

Keywords: interstitial lung abnormalities, idiopathic pulmonary fibrosis, lung cancer, lung cancer mortality, cancer mortality.

Summary:

Interstitial lung abnormalities are associated with an increased hazard of lung cancer diagnosis and mortality from lung cancer in a general population cohort. Cancers other than lung cancer were not associated with interstitial lung abnormalities.

Abstract

An increased incidence of lung cancer is well-known among patients with idiopathic pulmonary fibrosis. It is unknown whether interstitial lung abnormalities, early fibrotic changes of the lung, are a risk factor for lung cancer in the general population.

The study's objective was to assess whether interstitial lung abnormalities were associated with diagnoses of, and mortality from, lung cancer and other cancers. Data from the AGES-Reykjavik study, a cohort of 5,764 elderly Icelanders, were used. Outcome data were ascertained from electronic medical records. Gray's tests, Cox proportional hazards models and proportional subdistribution hazards models were used to analyse associations of interstitial lung abnormalities with lung cancer diagnoses and lung cancer mortality as well as diagnoses and mortality from all cancers.

Participants with interstitial lung abnormalities had greater cumulative incidence of lung cancer diagnoses ($p < 0.001$) and lung cancer mortality ($p < 0.001$) than others. Interstitial lung abnormalities were associated with an increased hazard of lung cancer diagnosis (HR = 2.77) and lung cancer mortality (HR = 2.89) in adjusted Cox models. Associations of interstitial lung abnormalities with all cancers were found in models including lung cancers but not in models excluding lung cancers.

People with interstitial lung abnormalities are at increased risk of lung cancer and lung cancer mortality, but not of other cancers. This implies that an association between fibrotic and neoplastic lung diseases of the lung exists from the early stages of lung fibrosis and suggests interstitial lung abnormalities as a risk factor in lung cancer screening efforts.

Introduction

Interstitial lung abnormalities (ILA) are commonly defined as abnormalities noted on chest computed tomography (CT) scans, similar in appearance to those noted in patients with interstitial lung disease (ILD) but occurring in a person without a known diagnosis of ILD [1]. There is evidence to suggest that some research participants with ILA may share a common syndrome noted in patients with IPF that includes the development of a restrictive lung deficit [1], accelerated lung function decline [2], imaging progression [2, 3], shared genetic determinants [4, 5], poorer subjective health and physical function, as well as increased rates of mortality [6-8]. ILA have been further categorised into specific subtypes and imaging patterns [1, 3]. Associations with restrictive lung deficits, genetic polymorphisms, imaging progression and mortality have been found to vary between these subtypes and patterns [1, 3, 9].

A number of studies have demonstrated an increased incidence of lung cancer among IPF patients compared to the general population, even when adjusted for confounders such as cigarette smoking [10, 11]. The development of lung cancer in IPF patients has been shown to severely impair their survival [12]. While ILA have been associated with increased prevalence of, and mortality from, lung cancer in cohorts of smokers intended for lung cancer screening [13-16], there is less known about these risks in the general population. In addition, data are scarce regarding whether there is an increased risk of non-pulmonary malignancies among people with ILA.

Thus, the objectives of this study were to explore the associations of ILA with diagnoses of both lung cancer and other cancers and to assess whether ILA were associated with increased mortality from lung cancer and other malignancies.

Methods

Data acquisition and materials

The Age, Gene/Environment Susceptibility - Reykjavik (AGES Reykjavik) study is a longitudinal birth cohort study, derived from the previous Reykjavik study, in which older individuals were recruited between 2002-2006 in an effort to identify the causal factors of diseases and disabilities associated with aging. Additional details on the study design have been previously published [17].

Of the 5,764 AGES-Reykjavik participants, chest computed tomography (CT) imaging of the thorax was characterized for the presence of ILA in 5,320 (92%) participants by up to three readers as previously described [1]. ILA were defined as nondependent ground-glass or reticular abnormalities, diffuse centrilobular nodularity, nonemphysematous cysts, honeycombing, and traction bronchiectasis that affected more than 5% of any lung zone [1]. Participants that had focal or unilateral ground-glass attenuation, focal or unilateral reticulation and patchy ground glass abnormalities present in less than 5% of any lung zone were regarded as having indeterminate changes [1]. Images from participants with ILA were further classified by the presence of the definite fibrosis imaging pattern, defined as pulmonary parenchymal architectural distortion consistent with a fibrotic lung disease [3].

Data on cancer diagnoses were available in 5,270 (99%) of the 5,320 AGES-Reykjavik participants previously characterized for ILA.

Participants were followed from their entry into the study (between 2002 and 2006) until their first diagnosis of cancer or until the end of observation (31st August 2016). Information regarding cancer diagnoses were ascertained from electronic medical records from Landspítali University Hospital, Iceland's largest, and only tertiary care, hospital. Participants' hospital visits with a registered ICD-10 diagnosis ranging from C00 to C97 were defined as cancer diagnoses with the date of the first such visit defined as the date of first diagnosis. Lung cancer diagnoses were likewise defined from hospital visits with a registered ICD-10 diagnosis starting with C34. Information on mortality and causes of death was obtained from the Icelandic Directorate of Health, with follow up from study entry through August 2016. Mortality from cancer was defined as having cause of death registered as C00-C97, coded according to the ICD-10, while mortality from lung cancer was defined as having C34 as registered cause of death.

Statistical analyses

Comparable to previous studies [4, 6], in analyses of the associations between ILA, cancer diagnoses, and cancer-associated mortality, participants indeterminate for ILA were excluded. The cumulative incidences of lung cancer diagnoses and diagnoses of other cancers among participants with and without ILA were calculated, with the risk of mortality regarded as a competing risk. Gray's tests were used to assess for differences in these cumulative incidences. The cumulative incidences of mortality from lung cancer, mortality from non-pulmonary cancers and mortality from other causes were calculated and compared between participants with and without ILA using Gray's tests with all risks regarded as competing.

Cox proportional hazards models were used to quantify the associations of ILA and several outcomes; lung cancer diagnoses, diagnoses of all cancers, mortality from lung cancers and mortality from all cancers. The proportional hazards assumption was tested and graphically verified for all models. The covariates included in all adjusted models were age, gender, pack years of smoking and smoking at the beginning of the study. In addition, models analysing the associations of ILA with diagnoses of all cancers and mortality from all cancers were constructed in which lung cancer diagnoses and lung cancer mortality were excluded from the outcomes. Identical Cox proportional hazards models were

created in which participants with ILA were compared to both participants indeterminate for ILA and participants without ILA. Results from these models are shown in the Supplement.

Proportional subdistribution hazards models [18] were created to verify results from Cox models using regression methods accounting for competing risks. To assess whether lung cancer outcomes differed depending on the presence of the definite fibrosis pattern, adjusted and unadjusted Cox proportional hazards models were created. In these models, the associations of lung cancer diagnoses and mortality from lung cancer were assessed, comparing participants with ILA and definite fibrosis or ILA without definite fibrosis to participants without ILA.

Statistical analyses were done using R, version 3.5.2.

Results

Participants' characteristics

Demographic variables and the incidence of cancer diagnoses between participants stratified by ILA status are included in Table 1. Comparable to previous reports [8], participants with ILA were on average older, more likely to be male, and were more likely to be exposed to tobacco smoke compared to participants without ILA.

ILA and cancer diagnoses

Subsequent to study entry, participants with ILA were more likely to have received a diagnosis of cancer overall, and lung cancer specifically, compared to participants without ILA (Table 1).

The cumulative incidences of lung cancer diagnoses and other cancer diagnoses are graphically displayed in Figure 1. Participants with ILA had a greater cumulative incidence of lung cancer diagnoses compared to participants without ILA ($P < 0.001$). Significant differences in the cumulative incidences of other cancer diagnoses were not found between participants with and without ILA (Figure 1).

In Cox proportional hazards models, participants with ILA were at increased risk of lung cancer diagnosis compared to those without ILA both in an unadjusted model (hazard ratio [HR] = 3.76, 95% confidence interval [CI] = 2.42-5.84, $P = 3.59 \cdot 10^{-9}$) and in a model adjusting for age, gender, pack years of smoking and smoking at the time of the study (HR = 2.77, 95% CI = 1.76-4.36, $P = 1.08 \cdot 10^{-5}$) (Table 2). In adjusted models, the increase in risk of lung cancer diagnosis was statistically significant for both participants with the definite fibrosis imaging pattern (HR = 3.95, 95% CI = 2.07-7.57, $P = 3.32 \cdot 10^{-5}$) and without it (HR = 2.26, 95% CI = 1.29-3.96, $P = 0.004$) although participants with fibrosis were at greater risk (Table 4). Participants with ILA were at an increased risk of diagnosis of cancer overall in adjusted models (HR = 1.35, 95% CI 1.09-1.68, $P = 0.006$). In contrast, the increase in risk of a diagnosis of all cancers excluding lung cancers was not statistically significant among participants with ILA (HR = 1.24, 95% CI = 0.98-1.57, $P = 0.07$) (Table 2).

ILA and mortality from cancer

The cumulative incidences of mortality from lung cancer and mortality from cancers other than lung cancer are displayed in Figure 2. Participants with ILA had greater mortality from lung cancer than participants with ILA ($P < 0.001$), as well as greater mortality from causes other than cancer. However, mortality from cancers other than lung cancer was not increased among participants with ILA (Figure 2).

In unadjusted Cox proportional hazards models, participants with ILA were at increased risk of death from all cancers (HR = 1.81, 95% CI = 1.39-2.37, $P = 1.23 \cdot 10^{-5}$) and from lung cancer specifically (HR = 4.19, 95% CI = 2.64-6.66, $P = 1.27 \cdot 10^{-9}$) compared to those without ILA. In models adjusting for age, gender, pack years of smoking and smoking at the time of the study, the same was true for death from cancer overall (HR = 1.47, 95% CI = 1.12-1.94, $P = 0.005$) and from lung cancer (HR = 2.89, 95% CI = 1.80-4.66, $P = 1.26 \cdot 10^{-5}$). However, the risk of death from all cancers excluding lung cancer was not statistically significantly increased among those with ILA (HR = 1.15, 95% CI = 0.82-1.61, $P = 0.43$) (Table 3). Participants with definite fibrosis were, in adjusted models, at increased risk of death from lung cancer (HR = 5.98, 95% CI = 3.29-10.9, $P = 4.17 \cdot 10^{-9}$). Meanwhile, this increase was not statistically significant for participants with ILA without definite fibrosis (HR = 1.68, 95% CI = 0.86-3.29, $P = 0.13$) (Table 4).

In proportional subdistribution hazards models adjusted for covariates, ILA was also found to be associated with an increased risk of lung cancer diagnoses (HR 2.63, 95% CI = 1.58-4.38, $P = 1.9 \cdot 10^{-4}$) and mortality from lung cancer (HR 2.55, 95% CI = 1.56-4.18, $P = 2.1 \cdot 10^{-4}$).

Discussion

These results demonstrate that AGES-Reykjavik participants with ILA are at an increased risk of both lung cancer diagnosis and mortality from lung cancer. These associations between ILA, lung cancer, and lung cancer associated mortality were consistent between Cox proportional hazards models and methods accounting for the competing risks of other cancer diagnoses or other causes of mortality. Associations varied with ILA patterns; participants with the definite fibrosis pattern were at greater risk of lung cancer diagnosis than participants without definite fibrosis and an increase in lung cancer associated mortality was only found among participants with definite fibrosis. The associations of ILA, which in some cases may represent early fibrotic changes of the lung [19], with pulmonary malignancies are in concordance with the well-established increase in risk of lung cancer among patients with more advanced pulmonary fibrosis such as IPF [10, 11]. These results also support previous findings from lung cancer screening studies of smokers that demonstrate an increased prevalence of ILA among patients with lung cancer [14, 15] as well as increased mortality from lung cancer among participants with ILA [13, 15]. However, associations of ILA with lung cancer diagnoses and lung cancer mortality have not been reported in a population-based cohort.

The mechanisms underlying these associations are yet to be clarified. It is possible that a common pathobiologic process exists for fibrotic lung disease and lung cancer. Several studies have explored this possibility with regards to lung cancer and IPF [20-22]. Among similarities noted in the pathogenesis of these diseases are genetic alterations, [22-25], epigenetic similarities including in DNA methylation and altered mRNA expression profiles [20, 24, 26], in addition to altered cell-to-cell communication, abnormalities in intracellular signalling pathways and overexpression of several signalling molecules [21, 24, 27, 28]. Besides a common biological pathway, the possibility remains that the results could be explained by a common, unmeasured risk factor via residual confounding. However, the mechanisms underlying these results cannot be determined from the cohort data shown here and thus remain a topic of research.

The results oppose the suggestion that participants with ILA are at an increased risk of diagnoses and mortality from cancers other than lung cancers. While there were small associations between ILA and these outcomes, they did not reach statistical significance when lung cancer diagnoses were excluded. This is supported by the lack of difference in the cumulative incidence of non-pulmonary cancer diagnoses and mortality from non-pulmonary cancers between participants with and without ILA (Figure 1, Figure 2).

The study has several limitations. Cancer diagnoses were obtained from medical records, from the National Hospital of Iceland. Thus, the outcome data regarding both cancer diagnoses and mortality are separately registered health record data, meaning that the quality of the data is dependent on the quality of clinicians' diagnoses and clinical registration. Among other limitations is the possibility that unknown confounding factors were not adjusted for. This is especially a concern in analyses regarding diagnoses of all cancers since various cancers have different risk factors that were not all adjusted for in these analyses. The association of ILA with mortality from lung cancer was dependent on the presence of the definite fibrosis pattern. That supports the notion that some of the associations presented could be limited to very extensive or progressive abnormalities, similar to changes seen in ILD that are known to be associated with lung cancer [10, 11]. Finally, while our

findings suggest that ILA preceded the diagnosis of lung cancer in the AGES-Reykjavik study, and we excluded cancer diagnoses that were present on participant entry, we can't exclude the possibility some slowly growing lung cancers could have occurred coincident with, or preceded the development of, ILA in some participants.

Despite these limitations, these findings have several implications for further research. The associations presented here between ILA and lung cancer indicate that studies and theories investigating the biological relationship between cancer and fibrotic lung diseases, such as IPF, could extend their approach to earlier stages of pulmonary fibrosis. In addition, the increased risk of lung cancer among people with ILA could, if replicated in studies of other populations, put early fibrotic changes of the lung such as ILA for consideration as a risk factor in lung cancer screening.

In conclusion, interstitial lung abnormalities were found to be associated with an increased hazard of lung cancer diagnosis as well as increased mortality from lung cancer. Such associations were not found for non-pulmonary malignancies.

References

1. Washko GR, Hunninghake GM, Fernandez IE, Nishino M, Okajima Y, Yamashiro T, Ross JC, Estepar RS, Lynch DA, Brehm JM, Andriole KP, Diaz AA, Khorasani R, D'Aco K, Sciruba FC, Silverman EK, Hatabu H, Rosas IO. Lung volumes and emphysema in smokers with interstitial lung abnormalities. *N Engl J Med* 2011; 364(10): 897-906.
2. Araki T, Putman RK, Hatabu H, Gao W, Dupuis J, Latourelle JC, Nishino M, Zazueta OE, Kurugol S, Ross JC, San Jose Estepar R, Schwartz DA, Rosas IO, Washko GR, O'Connor GT, Hunninghake GM. Development and Progression of Interstitial Lung Abnormalities in the Framingham Heart Study. *Am J Respir Crit Care Med* 2016; 194(12): 1514-1522.
3. Putman RK, Gudmundsson G, Axelsson GT, Hida T, Honda O, Araki T, Yanagawa M, Nishino M, Miller ER, Eiriksdottir G, Gudmundsson EF, Tomiyama N, Honda H, Rosas IO, Washko GR, Cho MH, Schwartz DA, Gudnason V, Hatabu H, Hunninghake GM. Imaging Patterns are Associated with Interstitial Lung Abnormality Progression and Mortality. *Am J Respir Crit Care Med* 2019.
4. Hunninghake GM, Hatabu H, Okajima Y, Gao W, Dupuis J, Latourelle JC, Nishino M, Araki T, Zazueta OE, Kurugol S, Ross JC, San Jose Estepar R, Murphy E, Steele MP, Loyd JE, Schwarz MI, Fingerlin TE, Rosas IO, Washko GR, O'Connor GT, Schwartz DA. MUC5B promoter polymorphism and interstitial lung abnormalities. *N Engl J Med* 2013; 368(23): 2192-2200.
5. Hobbs BD, Putman RK, Araki T, Nishino M, Gudmundsson G, Gudnason V, Eiriksdottir G, Zilhao Nogueira NR, Dupuis J, Xu H, O'Connor GT, Manichaikul A, Nguyen J, Podolanczuk AJ, Madahar P, Rotter JI, Lederer DJ, Barr RG, Rich SS, Ampleford EJ, Ortega VE, Peters SP, O'Neal WK, Newell JD, Jr., Bleecker ER, Meyers DA, Allen RJ, Oldham JM, Ma SF, Noth I, Jenkins RG, Maher TM, Hubbard RB, Wain LV, Fingerlin TE, Schwartz DA, Washko GR, Rosas IO, Silverman EK, Hatabu H, Cho MH, Hunninghake GM. Overlap of Genetic Risk between Interstitial Lung Abnormalities and Idiopathic Pulmonary Fibrosis. *Am J Respir Crit Care Med* 2019; 200(11): 1402-1413.
6. Axelsson GT, Putman RK, Araki T, Sigurdsson S, Gudmundsson EF, Eiriksdottir G, Aspelund T, Miller ER, Launer LJ, Harris TB, Hatabu H, Gudnason V, Hunninghake GM, Gudmundsson G. Interstitial lung abnormalities and self-reported health and functional status. *Thorax* 2018.
7. Axelsson GT, Putman RK, Miller ER, Araki T, Sigurdsson S, Gudmundsson EF, Eiriksdottir G, Siggeirsdottir K, Aspelund T, Launer LJ, Harris TB, Hatabu H, Gudnason V, Hunninghake GM, Gudmundsson G. Interstitial lung abnormalities and physical function. *ERJ open research* 2018; 4(3).
8. Putman RK, Hatabu H, Araki T, Gudmundsson G, Gao W, Nishino M, Okajima Y, Dupuis J, Latourelle JC, Cho MH, El-Chemaly S, Coxson HO, Celli BR, Fernandez IE, Zazueta OE, Ross JC, Harmouche R, Estepar RS, Diaz AA, Sigurdsson S, Gudmundsson EF, Eiriksdottir G, Aspelund T, Budoff MJ, Kinney GL, Hokanson JE, Williams MC, Murchison JT, MacNee W, Hoffmann U, O'Donnell CJ, Launer LJ, Harris TB, Gudnason V, Silverman EK, O'Connor GT, Washko GR, Rosas IO, Hunninghake GM. Association Between Interstitial Lung Abnormalities and All-Cause Mortality. *JAMA* 2016; 315(7): 672-681.
9. Putman RK, Gudmundsson G, Araki T, Nishino M, Sigurdsson S, Gudmundsson EF, Eiriksdottir G, Aspelund T, Ross JC, San José Estepar R, Miller ER, Yamada Y, Yanagawa M, Tomiyama N, Launer LJ, Harris TB, El-Chemaly S, Raby BA, Cho MH, Rosas IO, Washko GR, Schwartz DA, Silverman EK, Gudnason V, Hatabu H, Hunninghake GM. The MUC5B promoter polymorphism is associated with specific interstitial lung abnormality subtypes. *Eur Respir J* 2017; 50(3).
10. Le Jeune I, Gribbin J, West J, Smith C, Cullinan P, Hubbard R. The incidence of cancer in patients with idiopathic pulmonary fibrosis and sarcoidosis in the UK. *Respir Med* 2007; 101(12): 2534-2540.
11. Hubbard R, Venn A, Lewis S, Britton J. Lung Cancer and Cryptogenic Fibrosing Alveolitis. *Am J Respir Crit Care Med* 2000; 161(1): 5-8.
12. Tomassetti S, Gurioli C, Ryu JH, Decker PA, Ravaglia C, Tantalocco P, Buccioli M, Piciocchi S, Sverzellati N, Dubini A, Gavelli G, Chilosi M, Poletti V. The Impact of Lung Cancer on Survival of Idiopathic Pulmonary Fibrosis. *Chest* 2015; 147(1): 157-164.

13. Hoyer N, Wille MMW, Thomsen LH, Wilcke T, Dirksen A, Pedersen JH, Saghir Z, Ashraf H, Shaker SB. Interstitial lung abnormalities are associated with increased mortality in smokers. *Respir Med* 2018; 136: 77-82.
14. Wille MM, Thomsen LH, Petersen J, de Bruijne M, Dirksen A, Pedersen JH, Shaker SB. Visual assessment of early emphysema and interstitial abnormalities on CT is useful in lung cancer risk analysis. *Eur Radiol* 2016; 26(2): 487-494.
15. Whittaker Brown S-A, Padilla M, Mhango G, Powell C, Salvatore M, Henschke C, Yankelevitz D, Sigel K, de-Torres JP, Wisnivesky J. Interstitial Lung Abnormalities and Lung Cancer Risk in the National Lung Screening Trial. *Chest* 2019.
16. Nishino M, Cardarella S, Dahlberg SE, Araki T, Lydon C, Jackman DM, Rabin MS, Hatabu H, Johnson BE. Interstitial lung abnormalities in treatment-naive advanced non-small-cell lung cancer patients are associated with shorter survival. *Eur J Radiol* 2015; 84(5): 998-1004.
17. Harris TB, Launer LJ, Eiriksdottir G, Kjartansson O, Jonsson PV, Sigurdsson G, Thorgeirsson G, Aspelund T, Garcia ME, Cotch MF, Hoffman HJ, Gudnason V. Age, Gene/Environment Susceptibility – Reykjavik Study: Multidisciplinary Applied Phenomics. *Am J Epidemiol* 2007; 165(9): 1076-1087.
18. Fine JP, Gray RJ. A Proportional Hazards Model for the Subdistribution of a Competing Risk. *Journal of the American Statistical Association* 1999; 94(446): 496-509.
19. Miller ER, Putman RK, Vivero M, Hung Y, Araki T, Nishino M, Washko GR, Rosas IO, Hatabu H, Sholl LM, Hunninghake GM. Histopathology of Interstitial Lung Abnormalities in the Context of Lung Nodule Resections. *Am J Respir Crit Care Med* 2018; 197(7): 955-958.
20. Antoniou KM, Tomassetti S, Tsitoura E, Vancheri C. Idiopathic pulmonary fibrosis and lung cancer: a clinical and pathogenesis update. *Curr Opin Pulm Med* 2015; 21(6): 626-633.
21. Vancheri C. Common pathways in idiopathic pulmonary fibrosis and cancer. *European Respiratory Review* 2013; 22(129): 265.
22. Buendía-Roldán I, Mejía M, Navarro C, Selman M. Idiopathic pulmonary fibrosis: Clinical behavior and aging associated comorbidities. *Respir Med* 2017; 129: 46-52.
23. Carpagnano GE, Lacedonia D, Soccio P, Caccavo I, Patricelli G, Foschino Barbaro MP. How strong is the association between IPF and lung cancer? An answer from airway's DNA. *Med Oncol* 2016; 33(11): 119.
24. Ballester B, Milara J, Cortijo J. Idiopathic Pulmonary Fibrosis and Lung Cancer: Mechanisms and Molecular Targets. *Int J Mol Sci* 2019; 20(3).
25. Wang Y, Kuan PJ, Xing C, Cronkhite JT, Torres F, Rosenblatt RL, DiMaio JM, Kinch LN, Grishin NV, Garcia CK. Genetic defects in surfactant protein A2 are associated with pulmonary fibrosis and lung cancer. *Am J Hum Genet* 2009; 84(1): 52-59.
26. Rabinovich EI, Kapetanaki MG, Steinfeld I, Gibson KF, Pandit KV, Yu G, Yakhini Z, Kaminski N. Global methylation patterns in idiopathic pulmonary fibrosis. *PLoS One* 2012; 7(4): e33770.
27. Mercer PF, Woodcock HV, Eley JD, Platé M, Sulikowski MG, Durrenberger PF, Franklin L, Nanthakumar CB, Man Y, Genovese F, McAnulty RJ, Yang S, Maher TM, Nicholson AG, Blanchard AD, Marshall RP, Lukey PT, Chambers RC. Exploration of a potent PI3 kinase/mTOR inhibitor as a novel anti-fibrotic agent in IPF. *Thorax* 2016; 71(8): 701.
28. Vancheri C. Idiopathic pulmonary fibrosis and cancer: do they really look similar? *BMC Med* 2015; 13(1): 220.

Tables

Table 1 - The baseline characteristics of participants

PARTICIPANTS NO.	NO ILA¹ 3183	INDETERMINATE FOR ILA 1712	ILA 375
Mean age (SD)	76.0 (5.4)	77.4 (5.7)	77.8 (5.6)
Women – No. (%)	1887 (59)	953 (56)	170 (45)
BMI – mean (SD)	27.2 (4.4)	26.8 (4.4)	27.0 (4.6)
History of smoking – No. (%)	1732 (54)	1013 (59)	269 (72)
Median pack-years (IQR)	0 (0-16)	2.5 (0-23)	11 (0-28)
Current smoker – No. (%)	368 (12)	203 (12)	68 (18)
Days of follow up to all-cause mortality – Mean (SD)	3675 (1228)	3396 (1347)	2981 (1433)
Imaging patterns			
Without fibrosis – No. (%)			246 (66)
Definite fibrosis – No. (%)			129 (34)
Number of participants diagnosed with cancer before beginning of study			
Overall - No. (%)	194 (6.1)	132 (7.7)	32 (8.5)
Number of participants diagnosed with cancer after beginning of study			
Overall - No. (%)	668 (21)	383 (22)	97 (26)
Lung cancer (C34) - No. (%)	77 (2.4)	58 (3.4)	27 (7.2)
GI cancer (C15-C26) - No. (%)	176 (5.5)	86 (5.0)	20 (5.3)
Skin cancers (C43-C44) - No. (%)	45 (1.4)	30 (1.8)	4 (1.1)
Cancers of breasts and female genitalia (C50-C58) - No. (%)	108 (3.4)	44 (2.6)	8 (2.1)
Cancers of male genitalia (C60-C63)- No. (%)	124 (3.9)	71 (4.1)	20 (5.3)
Urinary tract cancers (C64- C68) - No. (%)	81 (2.5)	49 (2.9)	11 (2.9)
Hematologic malignancies (C81-C96 - No. (%)	57 (1.8)	34 (2.0)	9 (2.4)
Mortality due to cancer during study follow-up			
Cancer overall – No. (%)	388 (12)	232 (14)	63 (17)
Lung cancer (C34) – No. (%)	65 (2.0)	61 (3.6)	25 (6.7)

Table 2 - The associations of ILA and cancer diagnoses

Model	HR	95% CI	P-value
Lung cancer diagnoses			
Unadjusted	3.76	2.42-5.84	$3.59 \cdot 10^{-9}$
Adjusted	2.77	1.76-4.36	$1.08 \cdot 10^{-5}$
Cancer diagnoses of all causes			
Unadjusted	1.57	1.27-1.95	$3.07 \cdot 10^{-5}$
Adjusted	1.35	1.09-1.68	0.006
Cancer diagnoses of all causes excluding lung cancer			
Unadjusted	1.39	1.11-1.76	0.005
Adjusted	1.24	0.98-1.57	0.07

All models are Cox proportional hazards models of the association of interstitial lung abnormalities (ILA) with the specified cancer diagnoses.

Adjusted models are adjusted for age, gender, pack years and smoking at entry.

HR: Cause specific Hazard ratio

95% CI: 95% confidence interval

Table 3 - The associations of ILA and mortality from cancer

Model	HR	95% CI	P-value
Mortality from lung cancer			
Unadjusted	4.19	2.64-6.66	$1.27 \cdot 10^{-9}$
Adjusted	2.89	1.80-4.66	$1.26 \cdot 10^{-5}$
Mortality from all cancers			
Unadjusted	1.81	1.39-2.37	$1.23 \cdot 10^{-5}$
Adjusted	1.47	1.12-1.94	0.005
Mortality from all cancers excluding lung cancer			
Unadjusted	1.32	0.94-1.85	0.10
Adjusted	1.15	0.82-1.61	0.43

All models are Cox proportional hazards models of the association of interstitial lung abnormalities (ILA) with mortality from the specified cancers.

Adjusted models are adjusted for age, gender, pack years and smoking at entry.

HR: Cause specific Hazard ratio

95% CI: 95% confidence interval

Table 4 - The associations of imaging patterns with lung cancer diagnoses and mortality

Model	HR	95% CI	P-value
Definite fibrosis			
Lung cancer diagnoses			
Unadjusted	5.49	2.91-10.4	$1.56 \cdot 10^{-7}$
Adjusted	3.95	2.07-7.57	$3.32 \cdot 10^{-5}$
Mortality from lung cancer			
Unadjusted	8.86	4.94-15.9	$2.37 \cdot 10^{-13}$
Adjusted	5.98	3.29-10.9	$4.17 \cdot 10^{-9}$
Without fibrosis			
Lung cancer diagnoses			
Unadjusted	3.10	1.81-5.32	$3.90 \cdot 10^{-5}$
Adjusted	2.26	1.29-3.96	0.004
Mortality from lung cancer			
Unadjusted	2.53	1.33-4.79	0.005
Adjusted	1.68	0.86-3.29	0.13

All models are Cox proportional hazards models of the association of the specified pattern of interstitial lung abnormalities (ILA) with diagnoses of, or mortality from, lung cancer. All comparisons are made with participants without ILA. Adjusted models are adjusted for age, gender, pack years and smoking at entry.

HR: Cause specific Hazard ratio

95% CI: 95% confidence interval

Figures

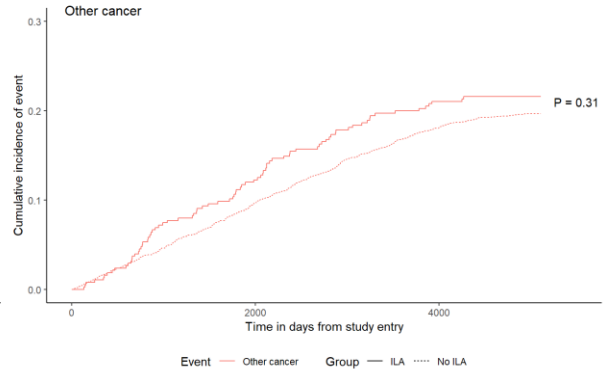
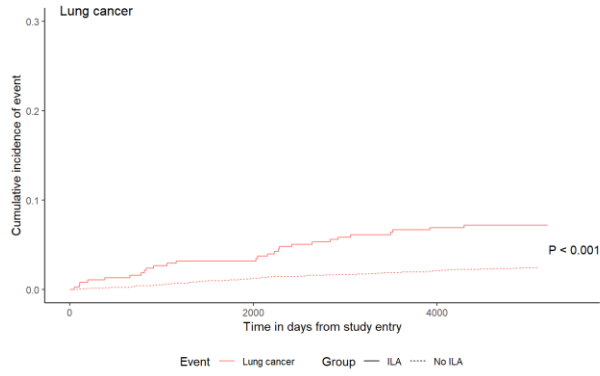
Figure 1 - Cumulative incidence of cancer diagnoses among participants with and without ILA
Legend:

P-values are for differences in the cumulative incidence of cancer diagnoses between participants with interstitial lung abnormalities and participants without interstitial lung abnormalities using Gray's tests.

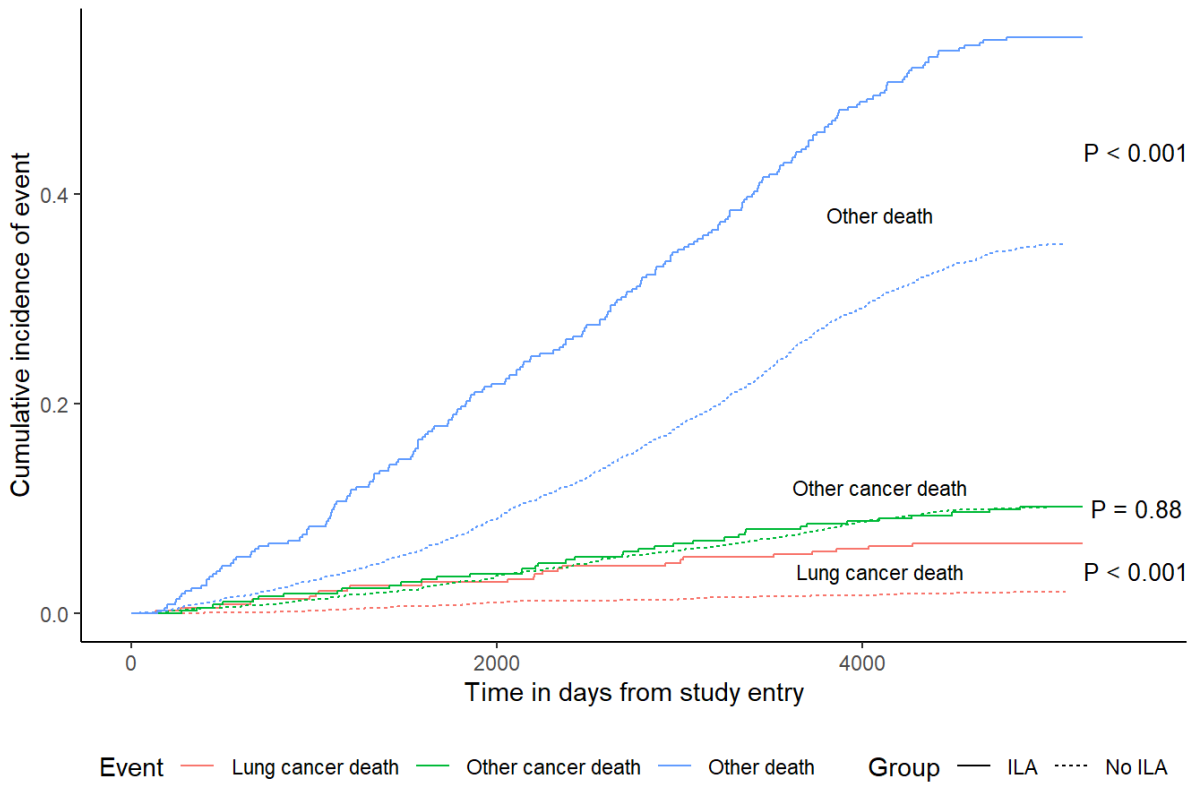
Figure 2 - Cumulative incidence of cancer mortality among participants with and without ILA
Legend:

P-values are for differences in the cumulative incidence of mortality due to the specified cause between participants with interstitial lung abnormalities and participants without interstitial lung abnormalities using Gray's tests.

Cumulative incidence of cancer diagnoses among participants with and without ILA



Cumulative incidence of cancer mortality among participants with and without ILA



Online Supplement

The Associations of Interstitial Lung Abnormalities with Cancer Diagnoses and Mortality

Gisli T. Axelsson BSc, Rachel K. Putman MD MPH, Thor Aspelund PhD, Elias F. Gudmundsson MSc, Tomayuki Hida, Tetsuro Araki MD, Mizuki Nishino MD MPH, Hiroto Hatabu MD PhD, Vilmundur Gudnason MD PhD, Gary M. Hunninghake MD MPH, Gunnar Gudmundsson MD PhD

Supplement Tables

Table S1 - The associations of ILA and cancer diagnoses with indeterminate participants included

Table S2 - The associations of ILA and mortality from cancer with indeterminate participants included

Table S1 - The associations of ILA and cancer diagnoses (indeterminate participants included)

Model	HR	95% CI	P-value
Lung cancer diagnoses			
Unadjusted	3.18	2.10-4.82	4.21·10 ⁻⁸
Adjusted	2.45	1.60-3.75	3.52·10 ⁻⁵
Cancer diagnoses of all causes			
Unadjusted	1.49	1.21-1.84	0.0002
Adjusted	1.30	1.05-1.61	0.014
Cancer diagnoses of all causes excluding lung cancer			
Unadjusted	1.35	1.07-1.69	0.01
Adjusted	1.20	0.96-1.51	0.11

All models are Cox proportional hazards models of the association of interstitial lung abnormalities (ILA) with the specified cancer diagnoses. Participants with indeterminate ILA are included with participants that do not have ILA.

Adjusted models are adjusted for age, gender, pack years and smoking at entry.

HR: Cause specific Hazard ratio

95% CI: 95% confidence interval

Table S2 - The associations of ILA and mortality from cancer (indeterminate participants included)

Model	HR	95% CI	P-value
Mortality from lung cancer			
Unadjusted	3.23	2.10-4.96	9.11·10 ⁻⁸
Adjusted	2.34	1.51-3.65	0.0002
Mortality from all cancers			
Unadjusted	1.68	1.30-2.18	8.75·10 ⁻⁵
Adjusted	1.39	1.07-1.81	0.01
Mortality from all cancers excluding lung cancer			
Unadjusted	1.28	0.92-1.78	0.15
Adjusted	1.12	0.80-1.56	0.50

All models are Cox proportional hazards models of the association of interstitial lung abnormalities (ILA) with mortality from the specified cancers. Participants with indeterminate ILA are included with participants that do not have ILA.

Adjusted models are adjusted for age, gender, pack years and smoking at entry.

HR: Cause specific Hazard ratio

95% CI: 95% confidence interval