

Figure E1: Effect of helmet NIV compared to facemask NIV on mortality. Observational data only. Df = degrees of freedom

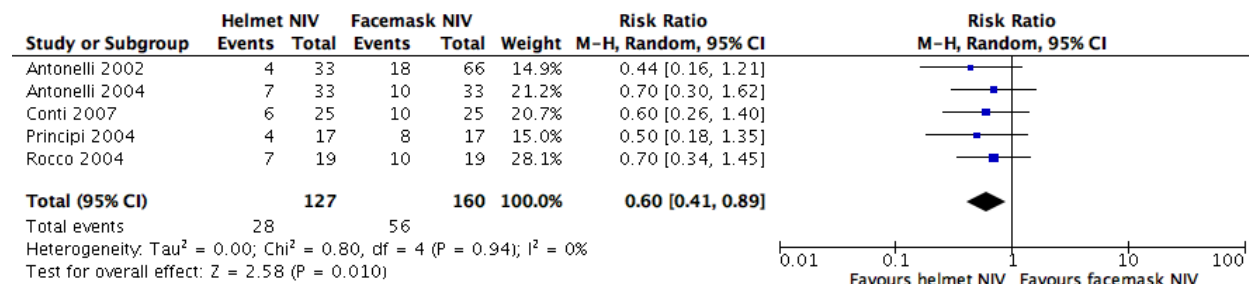


Figure E2: Effect of helmet NIV compared to facemask NIV on intubation. Observational data only. Studies are grouped by type of respiratory failure. Df = degrees of freedom

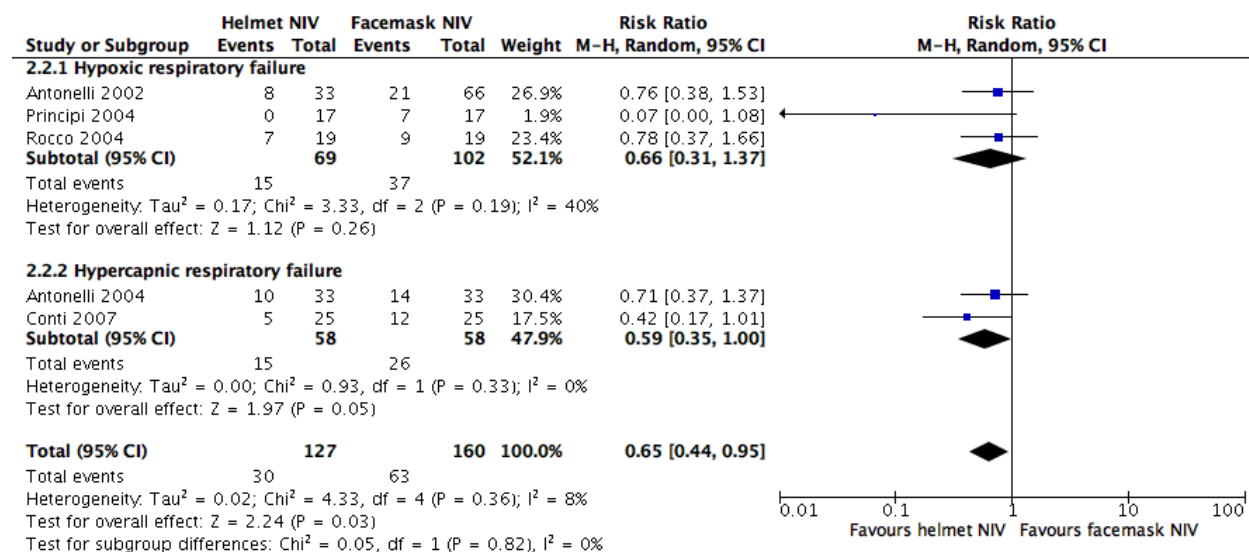


Figure E3: Effect of helmet NIV compared to facemask NIV on ICU length of stay. Observational data only. Df = degrees of freedom

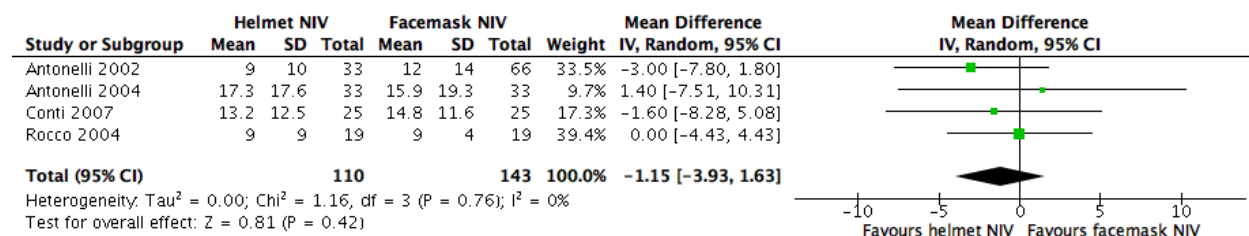


Figure E4: Effect of helmet NIV compared to facemask NIV on duration of NIV. Observational data only. Df = degrees of freedom

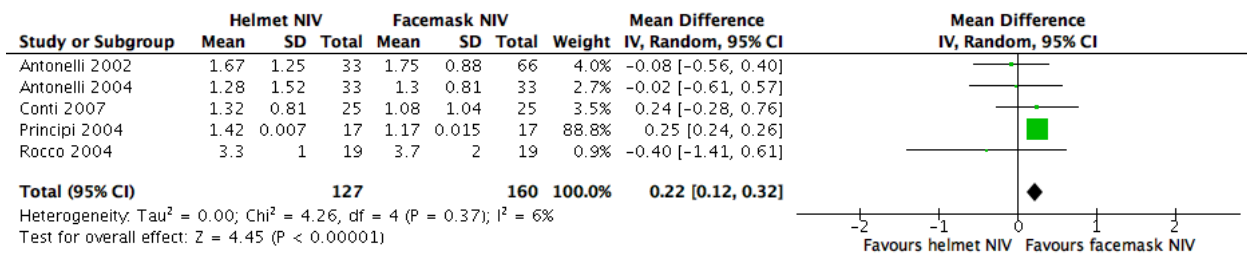


Figure E5: Effect of helmet NIV compared to high flow nasal cannula on intubation. Observational data only. Df = degrees of freedom

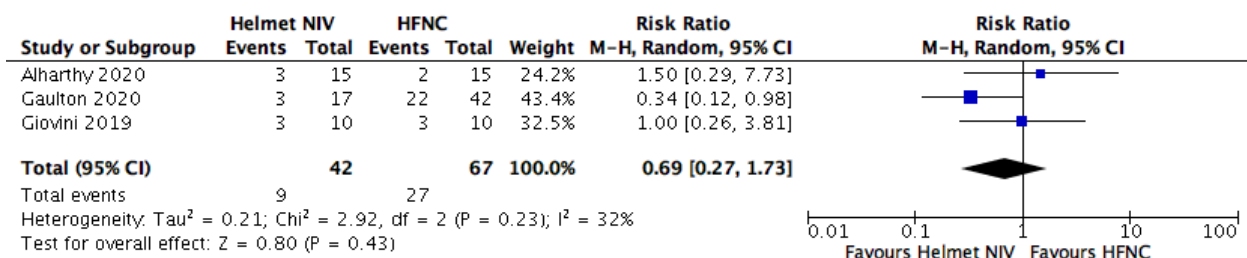


Figure E6: Effect of helmet NIV compared to high flow nasal cannula on mortality. Observational data only. Df = degrees of freedom

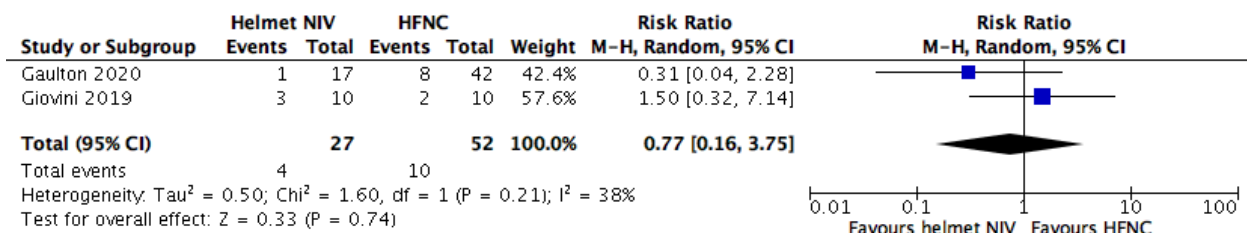


Figure E7: Effect of helmet NIV compared to facemask NIV on facial pressure sores. RCT data only. Df = degrees of freedom

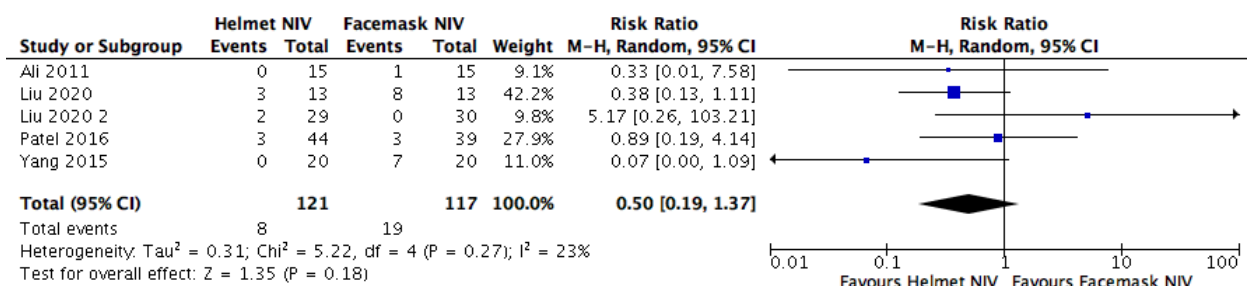


Figure E8: Effect of helmet NIV compared to facemask NIV on intubation. Studies are group by risk of bias. RCT data only. Df = degrees of freedom

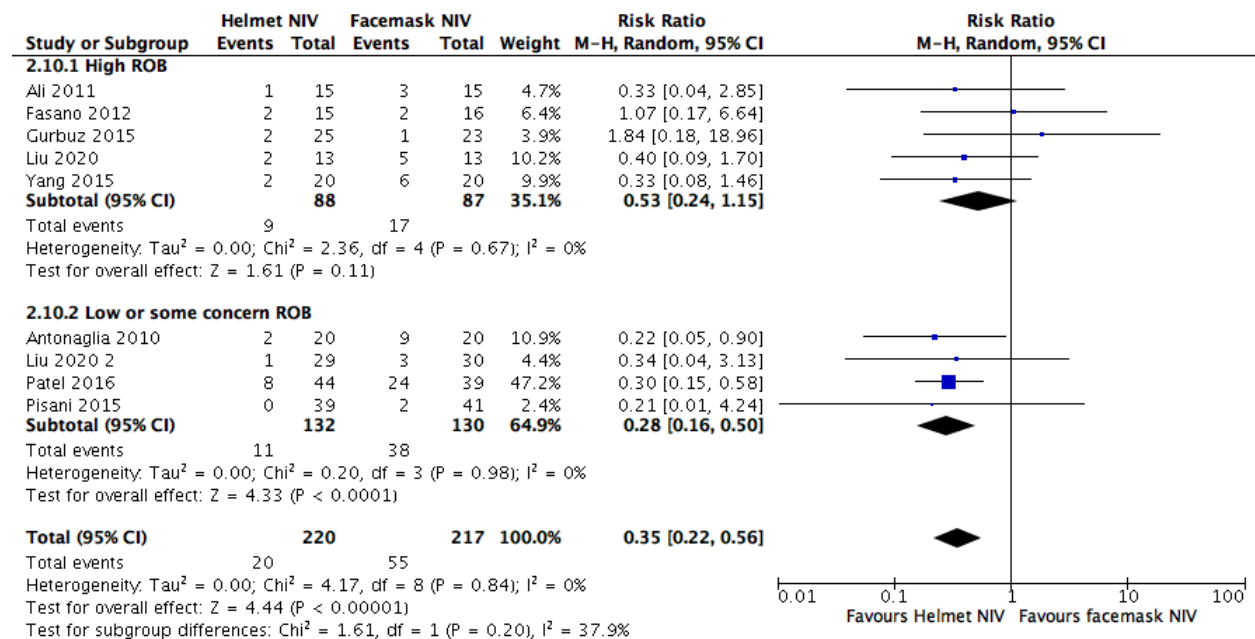


Figure E9: Funnel plot of helmet NIV compared to facemask NIV for the outcome of mortality

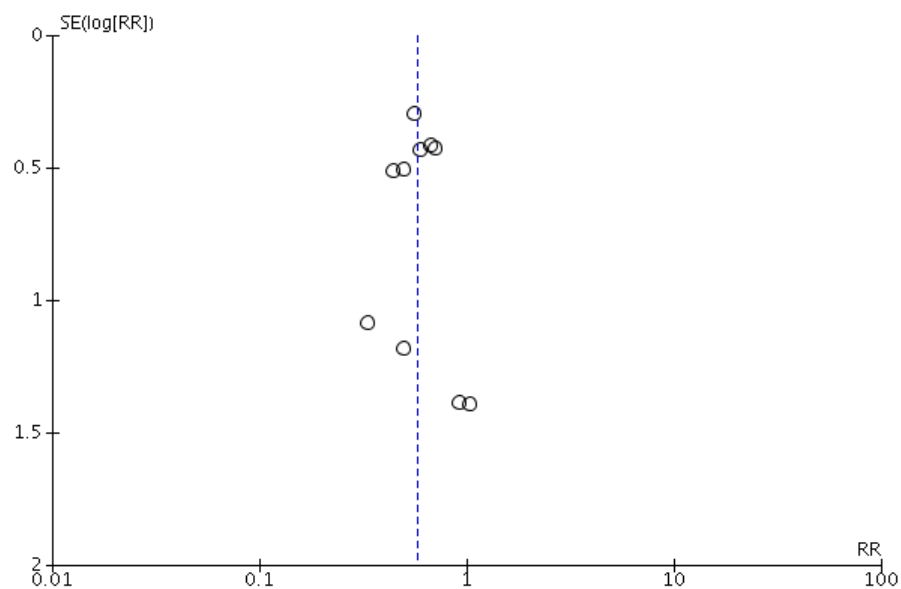


Figure E10: Funnel plot of helmet NIV compared to facemask NIV for the outcome of intubation

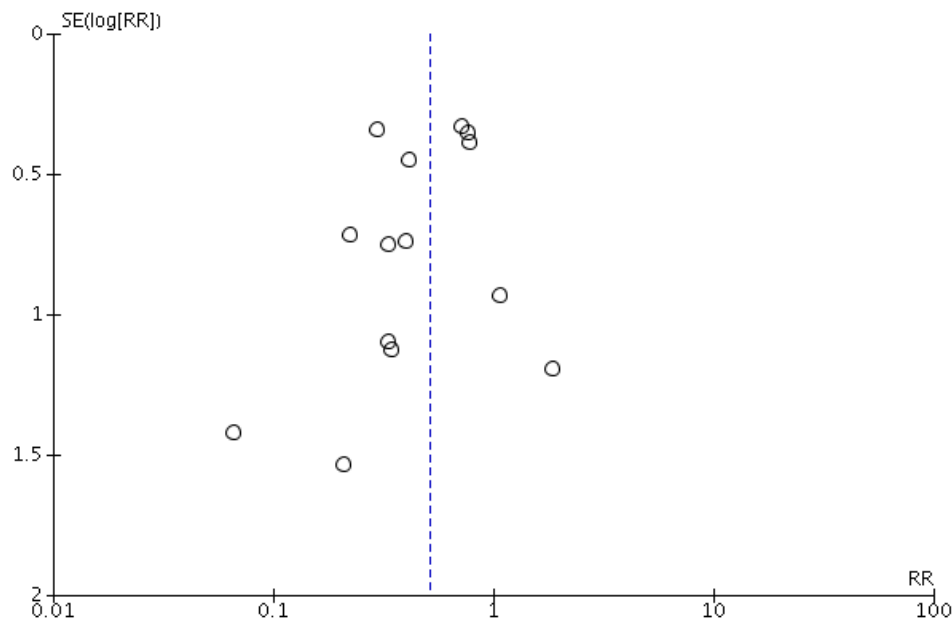


Figure E11: Effect of helmet NIV compared to facemask NIV on mortality. Studies are group by risk of bias. RCT data only. Df = degrees of freedom

