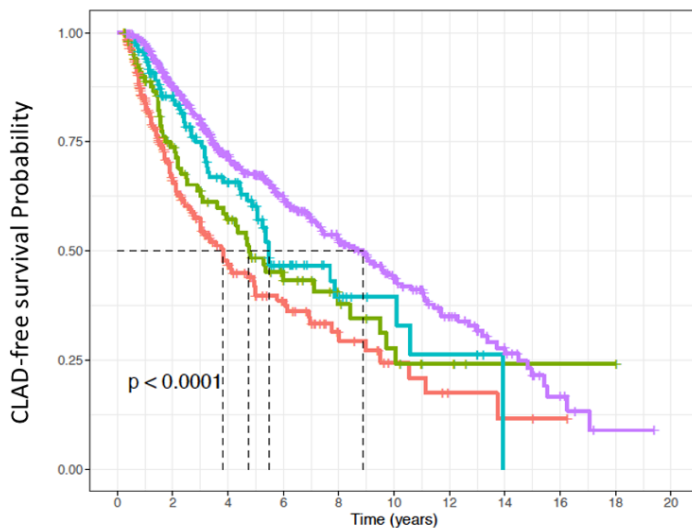


Supplementary Figure S3A. Kaplan-Meier curves for 4 groups demonstrating the relative contribution of low or normal baseline FVC and DLCO_{cor} on CLAD-free survival. Dashed lines indicate median survival. Among patients with normal baseline FVC, those with low baseline DLCO_{cor} had reduced CLAD-free survival compared to those with normal baseline DLCO_{cor}.

3B. Kaplan-Meier curves for 4 groups demonstrating the relative contribution of low or normal baseline FVC and DLCO_{cor} on graft survival. Dashed lines indicate median survival. Among patients with normal baseline FVC, patients with low baseline DLCO_{cor} showed significantly worse survival than patients with normal baseline DLCO_{cor}.

Supplementary Figure 3A.

- +— Low Baseline FVC and Low Baseline DLCO_{cor} (n=284)
- +— Low Baseline FVC and Normal Baseline DLCO_{cor} (n=103)
- +— Normal Baseline FVC and Low Baseline DLCO_{cor} (n=139)
- +— Normal Baseline FVC and Normal Baseline DLCO_{cor} (n=580)

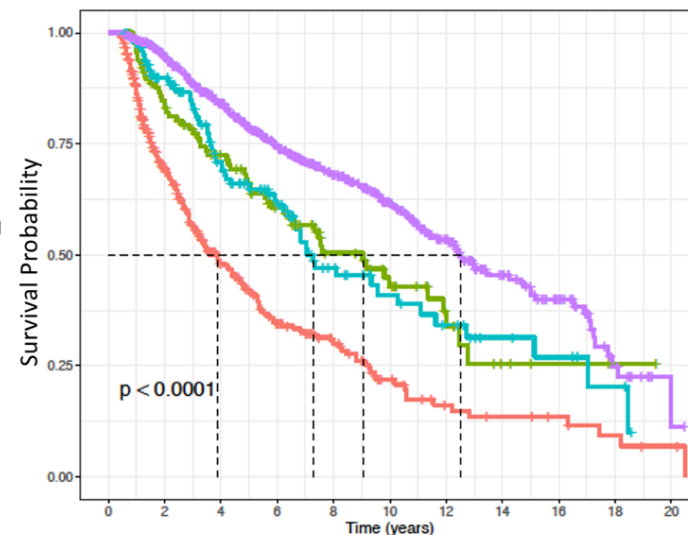


Number at risk

—+—	284	106	53	31	15	7	3	2	1	0	0
—+—	103	61	41	20	13	8	4	1	1	1	0
—+—	139	90	52	22	10	6	4	0	0	0	0
—+—	580	444	290	183	119	70	35	19	6	1	0

Supplementary Figure 3B.

- +— Low Baseline FVC and Low Baseline DLCO_{cor} (n=344)
- +— Low Baseline FVC and Normal Baseline DLCO_{cor} (n=118)
- +— Normal Baseline FVC and Low Baseline DLCO_{cor} (n=156)
- +— Normal Baseline FVC and Normal Baseline DLCO_{cor} (n=641)



Number at risk

—+—	344	187	99	62	41	22	12	9	7	4	2
—+—	118	91	70	50	30	22	11	4	2	1	0
—+—	156	112	73	50	29	19	14	8	6	3	0
—+—	641	554	423	300	221	156	100	58	33	11	1