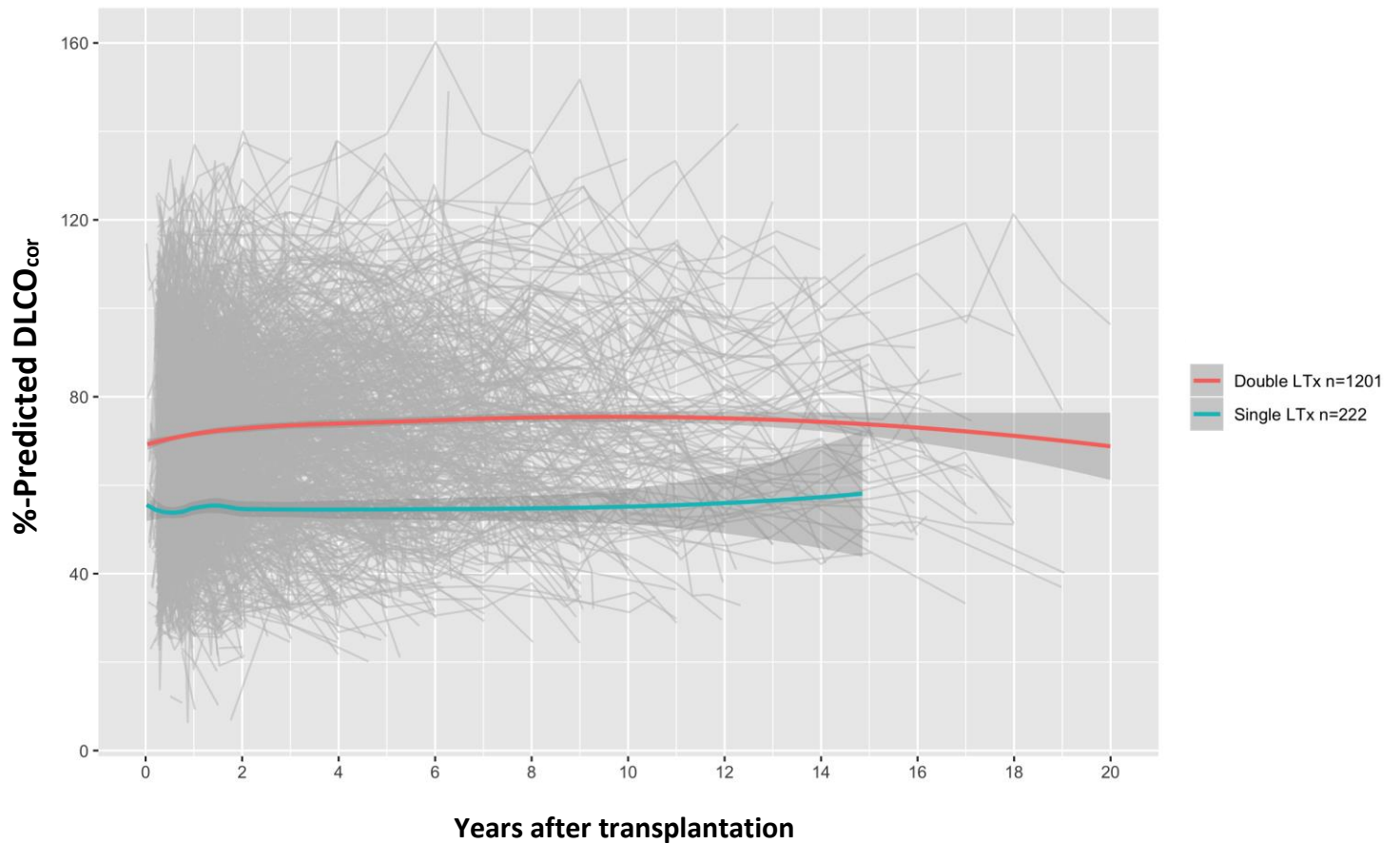
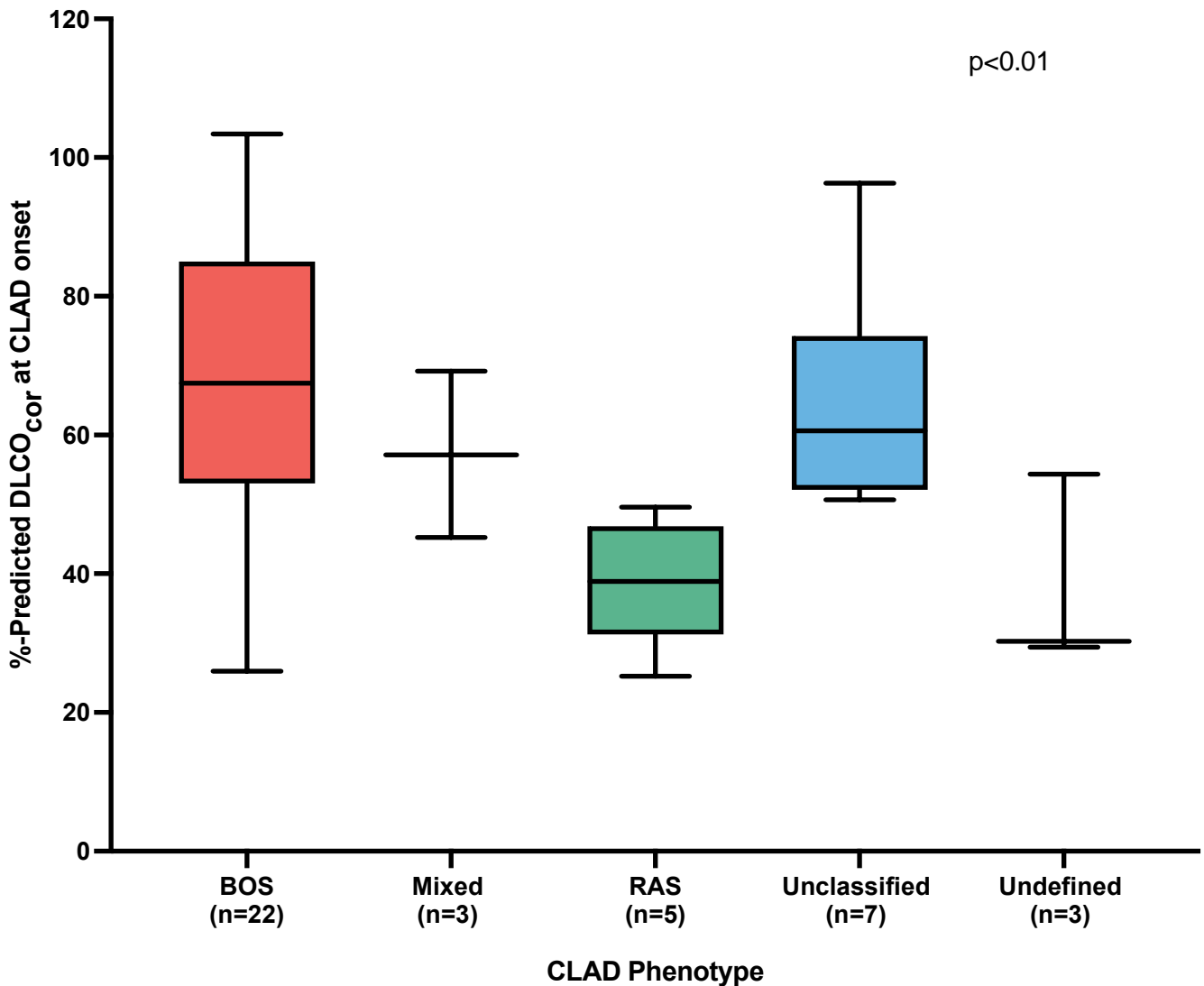


Supplementary Figure S1. The DLCO_{cor} trajectories are visualised for patients diagnosed with double lung transplant (n=1201) versus those single lung transplant (n=222). The trendline for each group is added with 95% confidence error bars. Lower values are observed after single lung transplant compared with double lung transplant.



Supplementary Figure S2. Tukey box plots for %-Predicted DLCO_{cor} at CLAD onset (+/- 30 days) for each CLAD phenotype with BOS (n=22), Mixed (n=3), RAS (n=5), Unclassified (n=7) and Undefined (n=3). There is a significant difference between phenotypes, with lowest values in the RAS and Undefined groups.



Abbreviations: CLAD = chronic lung allograft dysfunction; BOS = bronchiolitis obliterans syndrome; RAS = restrictive allograft syndrome. Boxes represent median with inter-quartile range.