

## ANNEX D: DETAILS OF YIELD META-ANALYSIS BY BURDEN AND TB INCIDENCE

Table 5. Results of yield meta-analysis by Tuberculosis incidence and burden. Yields per 100,000 population.

	Low incidence		Moderate incidence		Medium incidence		High incidence		High TB burden		non-High TB burden	
	Yield (CI95%)	NNS (CI95%)	Yield (CI95%)	NNS (CI95%)	Yield (CI95%)	NNS (CI95%)	Yield (CI95%)	NNS (CI95%)	Yield (CI95%)	NNS (CI95%)	Yield (CI95%)	NNS (CI95%)
General populations	4 (0-8)	25,000 (12,500-)	158 (44-272)	633 (368-2,273)	500 (421-579)	200 (173-238)	603 (457-749)	166 (134-219)	504 (438-571)	198 (175-228)	248 (60-436)	403 (229-1,667)
At-risk groups	572 (446-698)	175 (143-224)	1,194 (1,035-1,353)	84 (74-97)	1,563 (1,453-1,672)	64 (60-69)	4,159 (3,525-4,794)	24 (21-28)	1,734 (1,625-1,843)	58 (54-62)	987 (891-1,082)	101 (92-112)
Drug users	1,122 (822-1,530)	89 (65-122)	-	-	4,000 (1,846-8,451)	25 (12-54)	-	-	4,000 (1,846-8,451)	25 (12-54)	1,122 (822-1,530)	89 (65-122)
Health workers	-	-	119 (60-234)	840 (427-1,667)	1,481 (1,388-1,573)	68 (64-72)	680 (402-958)	147 (104-249)	2,501 (738-4,265)	40 (23-136)	148 (68-227)	676 (441-1,471)
Contacts/HHCs	1,993 (1,079-2,907)	50 (34-93)	595 (350-840)	168 (119-286)	1,719 (1,488-1,951)	58 (51-67)	3,052 (2,189-3,916)	33 (26-46)	1,633 (1,424-1,842)	61 (54-70)	2,065 (1,499-2,632)	48 (38-67)
PLHIV	-	-	6,159 (3,568-8,750)	16 (11-28)	8,843 (6,516-11,171)	11 (9-15)	10,085 (5,811-14,360)	10 (7-17)	10,002 (7,349-12,656)	10 (8-14)	7,163 (4,454-9,872)	14 (10-22)
Poor and marginalized	905 (249-3,239)	110 (31- 402)	1,031 (748-1,315)	97 (76-134)	995 (820-1,170)	101 (85-122)	2,159 (1,450-2,869)	46 (35-69)	1,130 (956-1,305)	88 (77-105)	2,694 (1,929-3,458)	37 (29-52)
Prison inmates	-	-	3,105 (2,254-3,956)	32 (25-44)	1,174 (860-1,487)	85 (67-116)	22,685 (20,287-25,277)	4 (4-5)	2,447 (2,020-2,873)	41 (35-50)	3,274 (939-5,609)	31 (18-106)
Refugees and immigrants	244 (163-324)	410 (309-613)	1,420 (689-2,902)	70 (34-145)	246 (230-263)	407 (380-435)	-	-	346 (284-423)	289 (236-352)	246 (173-320)	407 (313-578)
Mixed groups	502 (352-715)	199 (140-284)	497 (316-679)	201 (147-316)	2,112 (1,612-2,611)	47 (38-62)	379 (230-624)	264 (160-435)	1,400 (1,022-1,779)	71 (56-98)	548 (365-730)	182 (137-274)

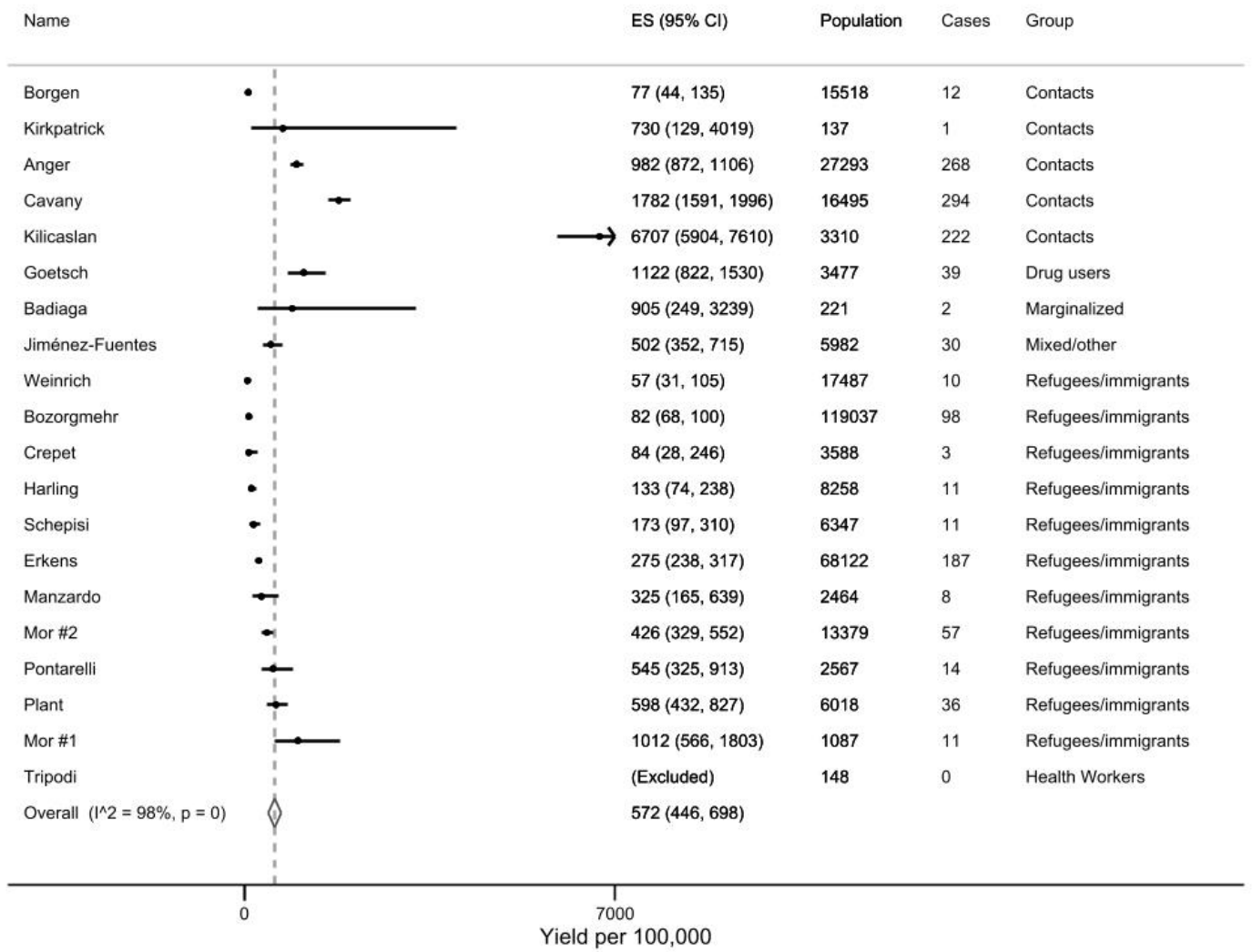
TB=Tuberculosis; HHC=household contact; PLHIV=People living with human immunodeficiency virus; NNS=Number needed to screen.

**Table 6. Results of yield/prevalence ratio meta-analysis by Tuberculosis incidence and burden. CI95% in parentheses.**

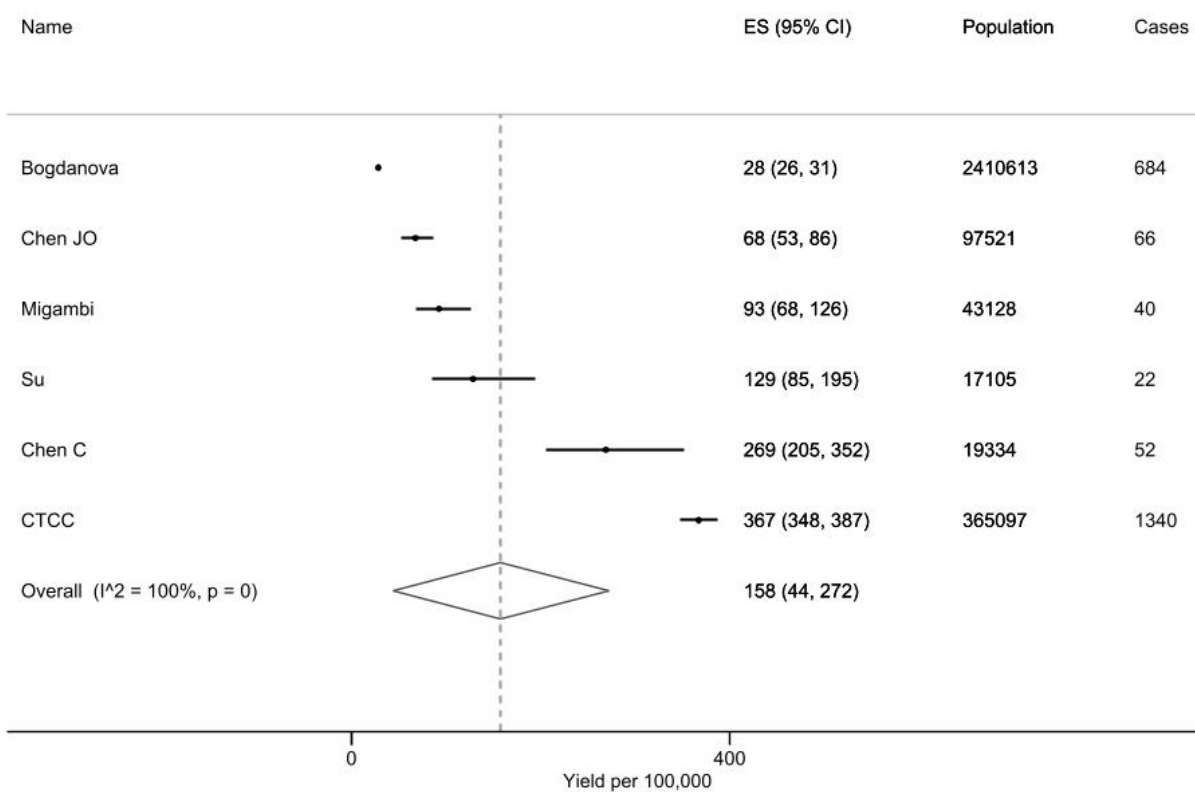
	Low incidence	Moderate incidence	Medium incidence	High incidence	High TB burden	non-High TB burden
General population	-	1.0 (0.2-1.8)	1.4 (0.6-2.2)	1.5 (0.7-2.3)	1.4 (0.8-2.0)	1.3 (0.2-2.5)
At-risk groups	-	35.1 (19.3-50.9)	9.1 (6.5-11.7)	8.0 (3.6-12.5)	12.9 (9.2-16.6)	9.2 (3.0-15.4)
Drug users	-	-	11.9 (11.1-12.7)	-	11.9 (11.1-12.7)	-
Health workers	-	-	19.4 (0-47.3)	-	19.4 (0-47.3)	-
Contacts/HHCs	-	5.5 (3.5-7.5)	9.0 (5.3-12.7)	6.5 (2.9-10.1)	7.8 (5.0-10.8)	9.0 (1.6-16.4)
PLHIV	-	23.7 (23.1-24.4)	21.0 (14.3-27.7)	16.5 (2.6-30.4)	20.2 (13.8-26.5)	17.4 (0-38.2)
Poor and marginalized	-	-	2.7 (1.4-4.0)	3.5 (2.2-4.8)	2.7 (1.8-3.6)	5.6 (0.4-10.9)
Prison inmates	-	49.9 (32.1-67.7)	2.9 (1.8-4.1)	-	26.5 (12.4-40.6)	1.1 (0.8-1.5)
Refugees and immigrants	-	-	1.1 (0.9-1.3)	-	1.2 (1.0-1.4)	1.0 (0.9-1.1)
Mixed groups	-	1.4 (0.7-2.1)	12.0 (0-28.0)	0.5 (0-1.1)	8.8 (0-20.6)	-

**TB=Tuberculosis; HHC=household contact; PLHIV=People living with human immunodeficiency virus.**

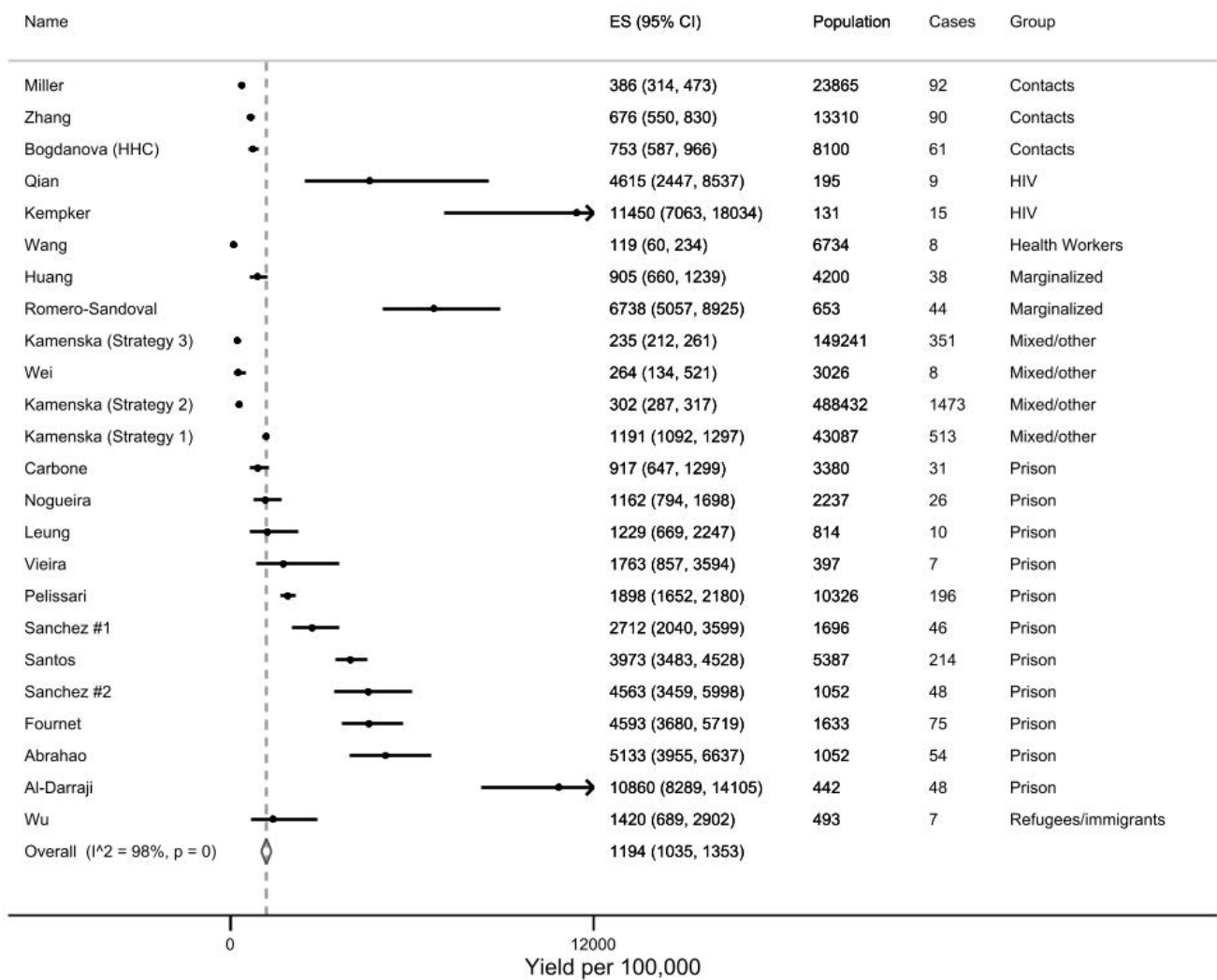
## Low incidence, at-risk groups



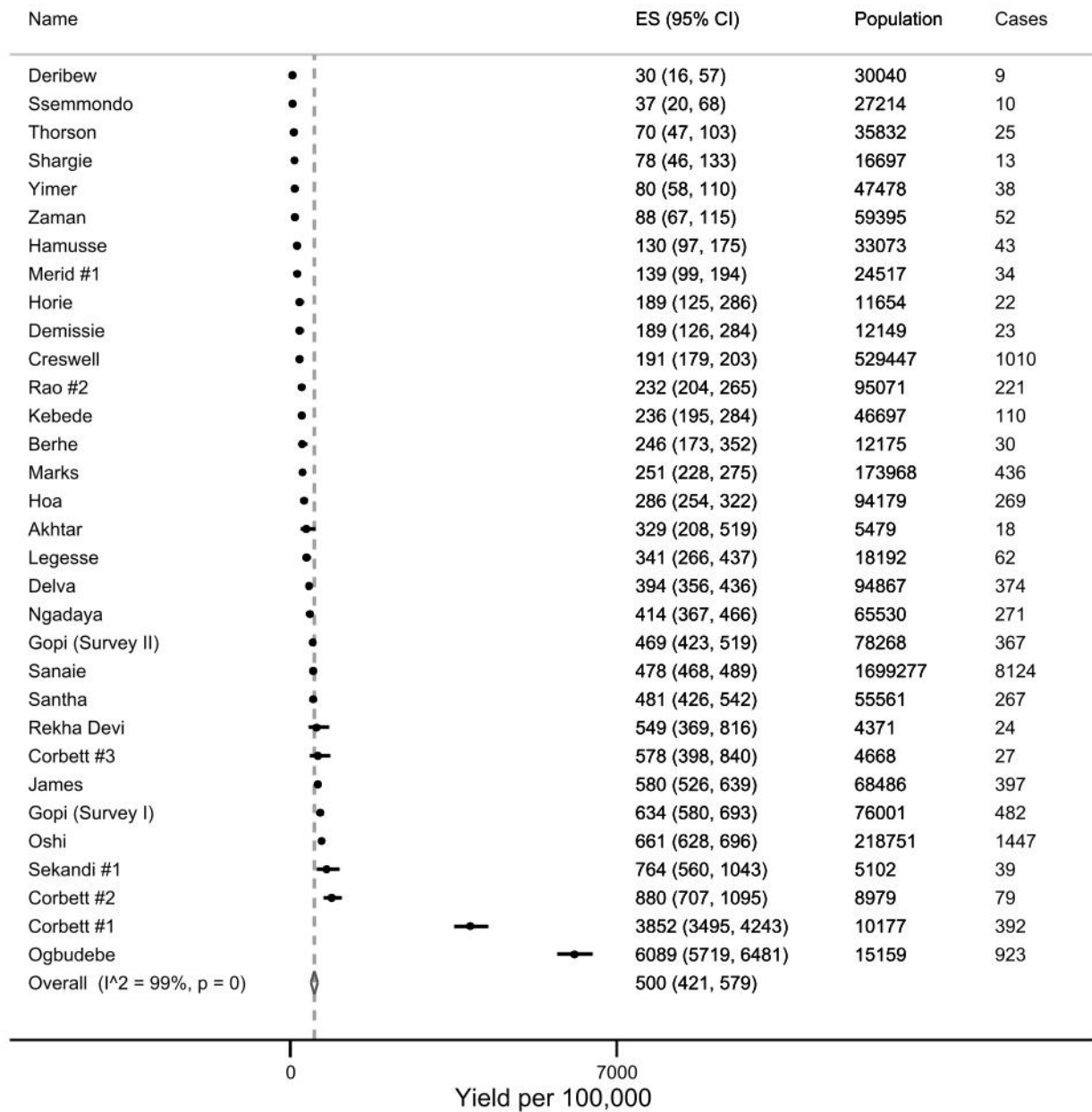
### Moderate incidence, general populations



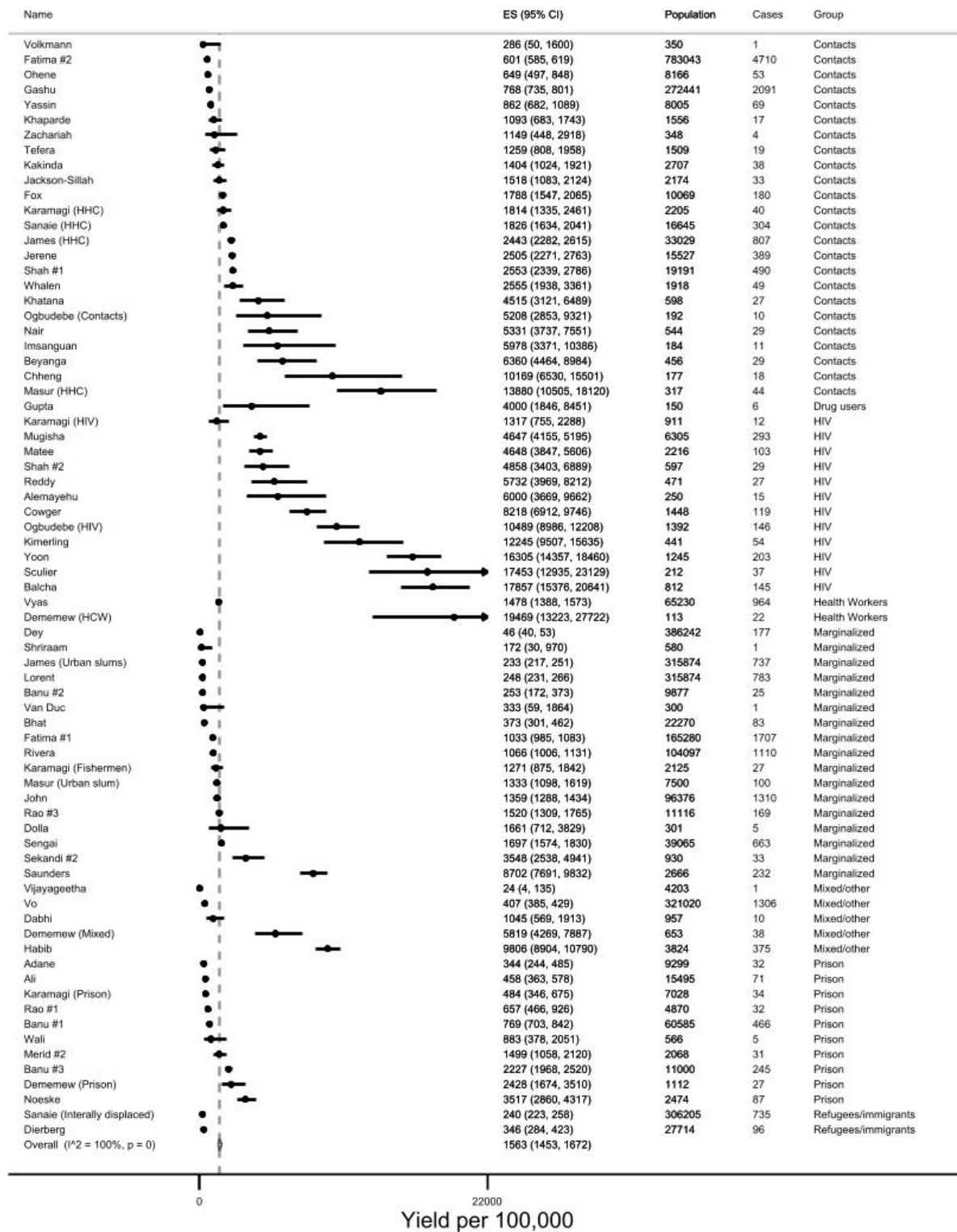
## Moderate incidence, at-risk groups



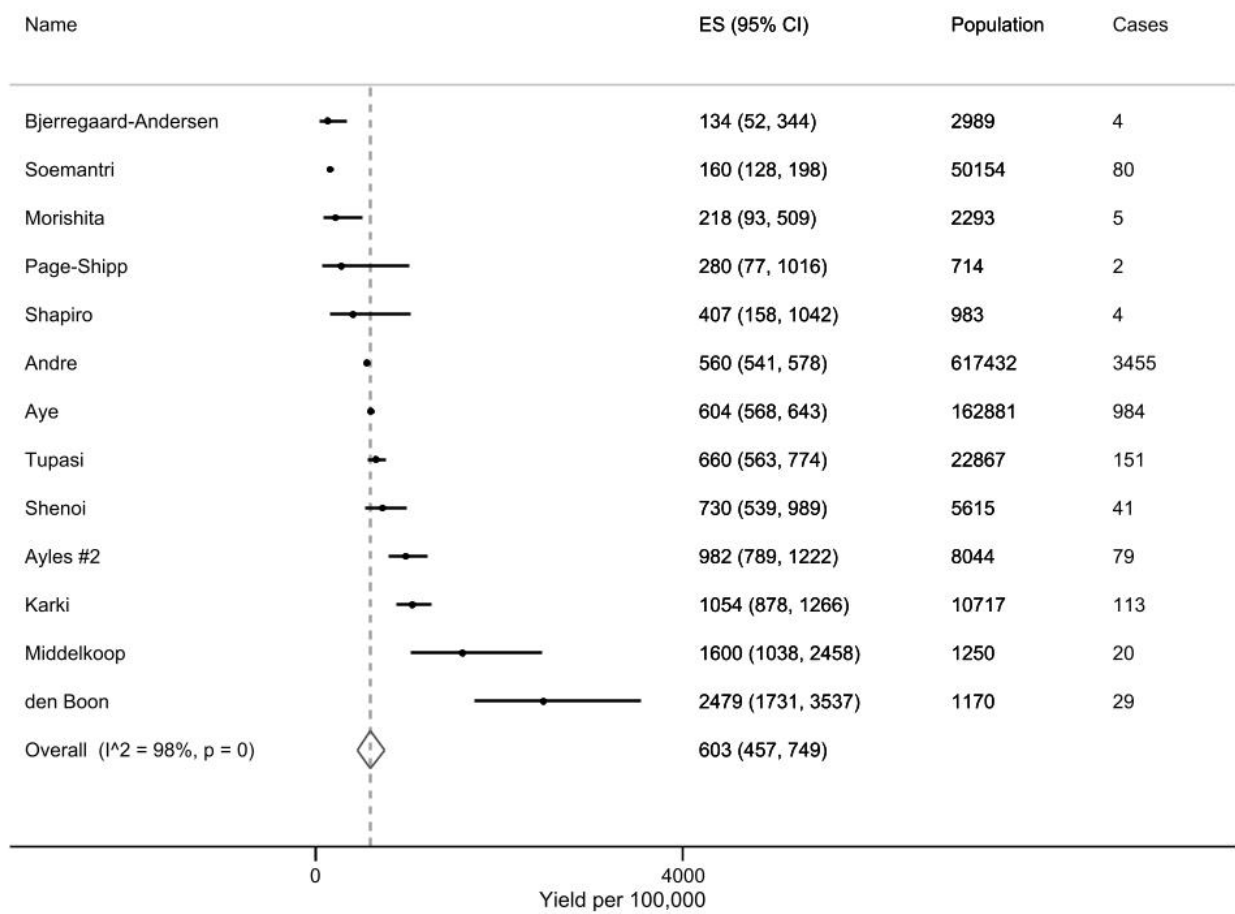
## Medium incidence, general populations



## Medium incidence, at-risk groups



### High incidence, general populations





### High incidence, at-risk groups

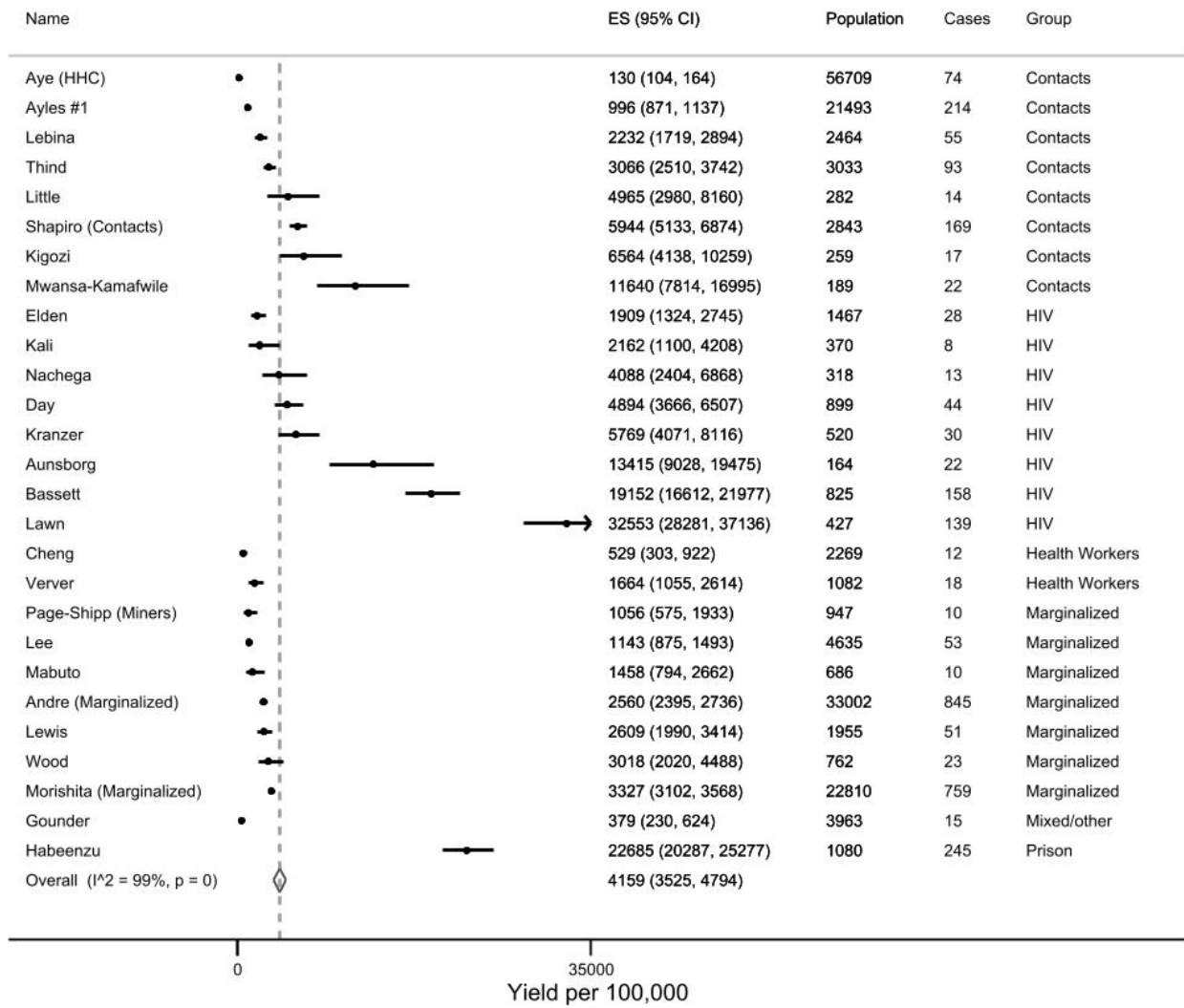


Figure 3.A-G. Forest plot of yields of studies by incidence levels and population type. ES=Yield estimates (prevalence of previously undiagnosed active Tuberculosis per 100,000 screened). “Low incidence countries, general populations” consisted of only two studies<sup>1,2</sup> and is consequently not presented as a forest plot here.