




Morphine alters respiratory control but not other key obstructive sleep apnoea phenotypes: a randomised trial

Rodrigo T. Martins^{1,2}, Jayne C. Carberry^{1,3}, David Wang^{4,5}, Luke Rowsell⁴, Ronald R. Grunstein^{4,5} and Danny J. Eckert ^{1,2,3}

Affiliations: ¹Neuroscience Research Australia (NeuRA), Sydney, Australia. ²School of Medical Sciences, University of New South Wales, Sydney, Australia. ³Adelaide Institute for Sleep Health, Flinders University, Bedford Park, Australia. ⁴CIRUS, Centre for Sleep and Chronobiology, Woolcock Institute of Medical Research, Faculty of Medicine and Health, The University of Sydney, Sydney, Australia. ⁵Royal Prince Alfred Hospital, Camperdown, Australia.

Correspondence: Danny J. Eckert, 5 Laffer Drive, Bedford Park, SA, Australia 5042. E-mail: danny.eckert@flinders.edu.au

 @ERSpublications

Contrary to previous concerns, 40 mg of MS-Contin (morphine) does not impair pharyngeal muscle activity, airway collapsibility or alter arousal threshold, but breathing responses to CO₂ are reduced, which could place certain OSA patients at risk of harm <http://bit.ly/32Ljkac>

Cite this article as: Martins RT, Carberry JC, Wang D, *et al.* Morphine alters respiratory control but not other key obstructive sleep apnoea phenotypes: a randomised trial. *Eur Respir J* 2020; 55: 1901344 [<https://doi.org/10.1183/13993003.01344-2019>].

ABSTRACT Accidental opioid-related deaths are increasing. These often occur during sleep. Opioids such as morphine may worsen obstructive sleep apnoea (OSA). Thus, people with OSA may be at greater risk of harm from morphine. Possible mechanisms include respiratory depression and reductions in drive to the pharyngeal muscles to increase upper airway collapsibility. However, the effects of morphine on the four key phenotypic causes of OSA (upper airway collapsibility (pharyngeal critical closure pressure; P_{crit}), pharyngeal muscle responsiveness, respiratory arousal threshold and ventilatory control (loop gain) during sleep) are unknown.

21 males with OSA (apnoea–hypopnoea index range 7–67 events·h⁻¹) were studied on two nights (1-week washout) according to a double-blind, randomised, cross-over design (ACTRN12613000858796). Participants received 40 mg of MS-Contin on one visit and placebo on the other. Brief reductions in continuous positive airway pressure (CPAP) from the therapeutic level were delivered to induce airflow limitation during non-rapid eye movement (REM) sleep to quantify the four phenotypic traits. Carbon dioxide was delivered via nasal mask on therapeutic CPAP to quantify hypercapnic ventilatory responses during non-REM sleep.

Compared to placebo, 40 mg of morphine did not change P_{crit} (-0.1 ± 2.4 versus -0.4 ± 2.2 cmH₂O, $p=0.58$), genioglossus muscle responsiveness (-2.2 (-0.87 to -5.4) versus -1.2 (-0.3 to -3.5) $\mu V \cdot \text{cmH}_2\text{O}^{-1}$, $p=0.22$) or arousal threshold (-16.7 ± 6.8 versus -15.4 ± 6.0 cmH₂O, $p=0.41$), but did reduce loop gain (-10.1 ± 2.6 versus -4.4 ± 2.1 , $p=0.04$) and hypercapnic ventilatory responses (7.3 ± 1.2 versus 6.1 ± 1.5 L·min⁻¹, $p=0.006$).

Concordant with recent clinical findings, 40 mg of MS-Contin does not systematically impair airway collapsibility, pharyngeal muscle responsiveness or the arousal threshold in moderately severe OSA patients. However, consistent with blunted chemosensitivity, ventilatory control is altered.

This study is registered at www.anzctr.org.au with identifier number ACTRN12613000858796. Individual data are provided in the manuscript. Additional data sharing is possible for non-commercial research purposes by contacting the authors subject to ethical approval.

Received: 8 July 2019 | Accepted after revision: 25 Feb 2020

Copyright ©ERS 2020

Introduction

Opioids are commonly prescribed for acute and chronic pain management and as an adjunct to anaesthesia. Global usage rates of opioids including morphine have increased substantially [1–3]; so too have the number of opioid-related deaths (>33 000 in the US in 2015 alone) [4–6]. >40% of unintentional medication poisoning deaths in the US are caused by opioid analgesics [2, 5–7], which pain management experts believe occur as a result of patients trying to manage unrelenting pain [8]. Most opioid-related deaths occur in people aged 22–54 years [5, 7]. Breathing can slow and become irregular with high doses of opioids, leading to hypercapnia and hypoxia [9]. Deaths nearly always occur during sleep [10]. While the precise mechanisms are unclear, opioid-induced changes combined with sleep-related reductions in respiratory control and chemoresponsiveness are probably important contributors.

People with obstructive sleep apnoea (OSA), a common condition characterised by intermittent cessation of airflow and blood gas disturbances, may be particularly vulnerable to harm with opioids. There are at least four key causes of OSA. These include impaired anatomy/upper airway collapsibility, poor pharyngeal muscle responsiveness during sleep, heightened arousal responses to airway narrowing (low respiratory arousal threshold) and unstable respiratory control (high loop gain) [11, 12].

The effects of morphine on each of these traits in people with OSA are unknown. Animal studies indicate that opioids activate laryngeal adductors and depress abductor motoneuron pools to reduce airway patency [13]. In addition, fentanyl can suppress hypoglossal motoneuron output to the largest upper airway dilator muscle, the genioglossus [14]. These findings suggest that opioids may reduce pharyngeal muscle activity, which would worsen OSA.

In humans, naloxone, an opioid antagonist, reduces upper airway collapsibility [15]. This suggests that opioids may increase upper airway collapsibility. Indeed, opioids can reduce upper airway reflexes when combined with anaesthesia [16, 17]. Post-operatively, sufentanil, alfentanil and remifentanil are all associated with upper airway obstruction [18–20]. During wakefulness, opioids blunt responsiveness to hypercapnia [21] and hypoxia [22]. Thus, opioids may paradoxically stabilise breathing in certain OSA patients by reducing unstable ventilatory control (high loop gain) [23, 24]. However, individuals with poor ventilatory responses to carbon dioxide (CO₂) are more vulnerable to ventilatory depression and blood gas disturbances with narcotic drugs [25]. The effects of opioids on respiratory-induced arousals in humans are unknown. However, acutely, morphine disrupts sleep and reduces N3 and rapid eye movement (REM) sleep [26, 27].

Our recent double-blind randomised clinical study indicated that neither 30 mg (n=10) nor 40 mg (n=60) of oral controlled-released morphine systematically worsen OSA severity [23, 28]. However, there is considerable interindividual variability which is explained, at least in part, by differences in baseline chemosensitivity and blood morphine concentration [23, 28]. Accordingly, given the absence of data on the effects of morphine on the key contributors to OSA and the potential for harm, this study aimed to determine the effects of morphine on the key phenotypic causes of OSA.

Materials and methods

The current detailed upper airway physiology/phenotyping during sleep investigation was designed as a sub-study of a larger randomised trial that focused on wakefulness breathing responses and the clinical effect (measured *via* standard overnight polysomnography) of morphine on OSA severity (ACTRN12613000858796) [28]. All participants enrolled in the larger clinical trial (middle-aged males with untreated OSA, n=60), were approached in person by a member of the research team during their first visit or *via* follow-up phone call to participate in the current detailed physiology sub-study (figure 1). Our target recruitment rate from the main clinical study was one in three.

Inclusion criteria for the main clinical study and the current physiology sub-study were males aged between 18 and 65 years, body mass index ≤ 40 kg·m⁻², awake peripheral oxygen saturation (S_{pO₂}) >90%, sleep S_{pO₂} nadir >60% and apnoea–hypopnoea index (AHI) ≥ 5 events·h⁻¹. Exclusion criteria included shift workers, other significant sleep disorders such as periodic limb movements in sleep, severe medical and/or psychiatric disorders, history of drug abuse and/or positive urine drug test to narcotic or other illicit drugs, history of allergy to morphine, concurrent continuous positive air pressure (CPAP) users and medication use that could interfere with the study objectives (*e.g.* sedatives). People with current acute illnesses (*e.g.* respiratory infections or rhinitis) were not studied until they had been clear of symptoms for ≥ 4 weeks. Other than their recent participation in the main clinical study [28], participants had no or minimal prior exposure to MS-Contin or other opioids.

Participants recruited from the main clinical study completed two additional detailed overnight studies in the sleep physiology laboratory for the current physiology sub-study with a 1-week wash-out between visits according to a double-blind, randomised, placebo-controlled, cross-over design (figure 1).

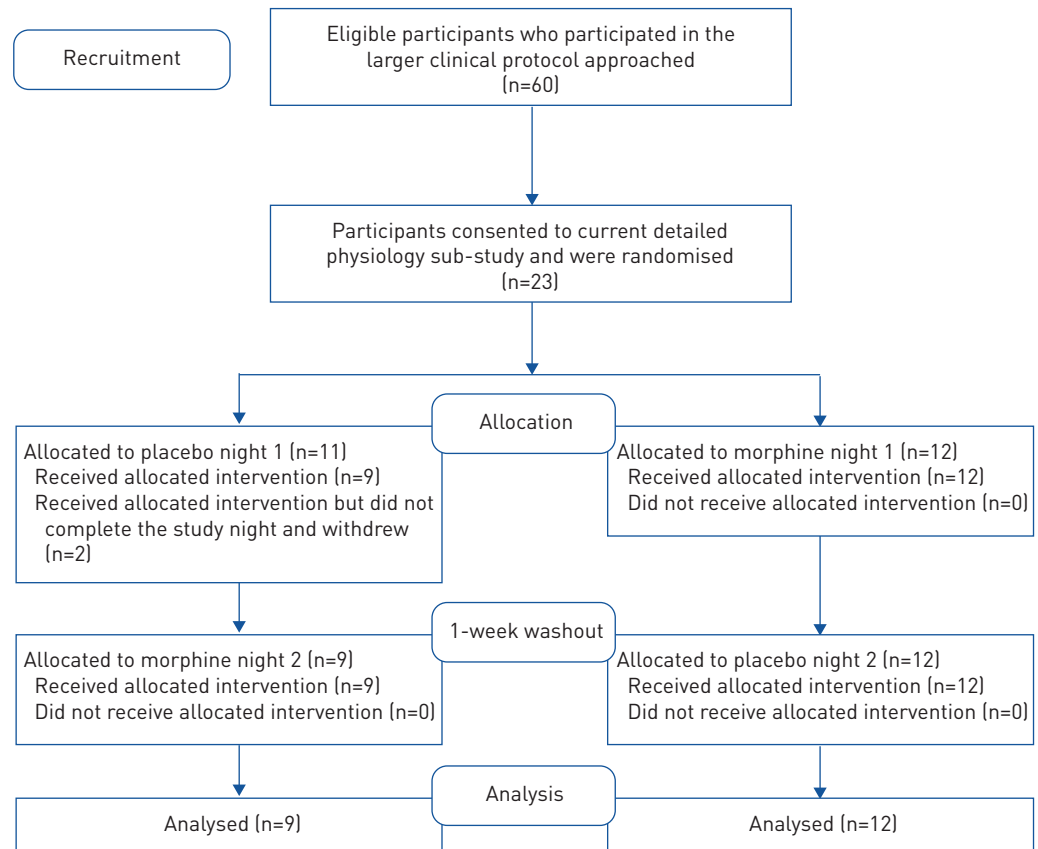


FIGURE 1 Consolidated Standards of Reporting Trials diagram highlighting the recruitment and enrolment approach and participant flow through the protocol and analysis steps for this double-blind, randomised, placebo-controlled, cross-over, physiology sleep study. Participants were recruited and studied in the current protocol between August 2013 and August 2015.

Participants were admitted at 17:00 h following informed written consent. Shortly after arrival, the allocated study intervention was given (40 mg of MS-Contin or placebo). Electroencephalograms, electro-oculograms and ECG leads were fitted. A blood sample was drawn at 21:30 h to assess blood morphine concentration at the anticipated peak concentration level. Participants were then instrumented with two intramuscular genioglossus electrodes by mouth to create a bipolar electromyogram (EMG) recording after topical anaesthesia with 1% lignocaine as described previously [29]. An epiglottic pressure catheter (MPR-500; Millar, Houston, TX, USA) was inserted nasally to measure pharyngeal pressures during sleep [29]. A nasal mask (Philips Respironics Comfort Gel; Pittsburgh, PA, USA) was fitted with a pressure sensor (Validyne CD19A; Northridge, CA, USA), pneumotachograph (3700A; Hans Rudolph, Shawnee, KS, USA) and an end-tidal carbon dioxide tension (P_{ETCO_2}) sensor (17630 CO₂ Analyser; VacuMed, Ventura, CA, USA) in series. A finger pulse oximeter (Nonin 7500; Plymouth, MN, USA) was attached.

Participants were asked to sleep supine as much as possible throughout the night. If an individual rolled onto their side for more than a few minutes, a researcher entered the room to remind them to return to their back. Body position was monitored continuously *via* infrared camera. Signals were acquired using a 1401 analogue to digital converter and Spike 2 software (CED, Cambridge, UK).

During the night, participants were connected to a modified CPAP device capable of delivering positive and negative pressure (Philips P_{crit} 3000). Initially, the optimal holding pressure required to eliminate inspiratory flow limitation was determined. Transient CPAP reductions were then performed during stable non-REM sleep to induce upper airway narrowing or collapse. CPAP reductions lasted up to 3 min and were performed as many times as possible throughout the night to allow quantification of the phenotypic traits [11, 30]. Specifically, the priority was to quantify pharyngeal critical closure pressure (P_{crit}), genioglossus muscle responsiveness and the respiratory arousal threshold. Where possible, loop gain data were also obtained as a secondary outcome, given that quantification of this trait typically requires an additional night of study [11]. Accordingly, given the importance of gaining knowledge of the effects of

morphine on respiratory control parameters during sleep, steady-state hypercapnic ventilatory responses were also acquired in a sub-sample of participants. External CO₂ was administered *via* the nasal mask for up to 5 min in each condition while on therapeutic CPAP to achieve 5 and 7.5 mmHg above baseline during stable non-REM sleep. A further blood sample was drawn upon awakening the following morning.

Data analysis

Sleep staging and arousal scoring was performed by a single experienced sleep technician blinded to the study intervention. To calculate P_{crit} , peak inspiratory flow was plotted against mask pressure for breaths 3–5 following each transient CPAP reduction if flow-limited. Linear regression to zero flow was then performed to calculate passive P_{crit} [11, 12]. Muscle responsiveness was calculated by plotting nadir epiglottic pressure *versus* genioglossus peak EMG activity for every artefact-free breath during CPAP reductions and linear regression performed to calculate the slope of the relationship [11, 12]. Arousal threshold was calculated as the nadir epiglottic pressure immediately prior to the scored arousal, as described previously [11].

When available, steady-state loop gain was calculated as the ventilatory disturbance (reduction in minute ventilation during the last 60 s of a CPAP reduction) to ventilatory response (increase in minute ventilation upon reintroduction of CPAP) ratio, as described previously [30]. During the steady-state hypercapnic ventilatory response protocol, 30 s of breath-by-breath ventilatory and genioglossus muscle data were analysed and averaged for the pre-CO₂ baseline period. Similarly, the last arousal-free 30 s of each CO₂ increment level (P_{ETCO_2} +5 and +7.5 mmHg) were analysed [31, 32].

Statistical analyses

Two-tailed paired t-tests or a Mann–Whitney rank test were used to compare the effects of morphine *versus* placebo on the four key causes of OSA, as appropriate. α was set at $p < 0.05$. We estimated that a sample size of $n = 20$ would be sufficient to detect a mean \pm SD 1.2 \pm 1.8 cmH₂O change in P_{crit} [33], a 3 \pm 4.6 cmH₂O change in the respiratory arousal threshold [34] and a 2.3 \pm 3.4 μ V·cmH₂O^{−1} epiglottic pressure in genioglossus muscle responsiveness (in-house reproducibility data) between morphine and placebo conditions with a two-tailed, paired t-test with ~80% power. Linear mixed model analyses for repeated measures were used to compare ventilatory and genioglossus parameters during the CO₂ protocol (SPSS version 24; IBM, Armonk, NY, USA). Parameters included were condition (placebo or morphine), experiment (baseline, +5 mmHg and +7.5 mmHg) and actual P_{ETCO_2} level.

Results

Participant characteristics

23 participants were recruited for this study. Two withdrew during their first overnight visit as they could not tolerate CPAP. The study intervention was well tolerated. Anthropomorphic, demographic, lung function and polysomnographic characteristics for the 21 study participants who completed both study nights are summarised in table 1.

Effects of morphine on the phenotypic traits

Peak blood morphine concentration was mean \pm SD 8.6 \pm 3.8 ng·mL^{−1} (range 1.7–16.9 ng·mL^{−1}). Morning blood morphine concentration was 2.2 \pm 0.8 ng·mL^{−1} (0.9–3.8 ng·mL^{−1}). 21 \pm 6 CPAP reductions were

TABLE 1 Anthropometric, sleep and lung function parameters

Subjects	21
Age years	51 \pm 10
BMI kg·m^{−2}	28 \pm 4
AHI events·h^{−1}	26 \pm 17
Nadir S_{pO₂} %	85 \pm 6
ESS	8 \pm 3
Sleep efficiency %	84 \pm 9
Neck circumference cm	40 \pm 4
FEV₁ % pred	106 \pm 11
FVC % pred	110 \pm 13
FEV₁/FVC	0.8 \pm 0.1

Data are presented as n or mean \pm SD. BMI: body mass index; AHI: apnoea-hypopnoea index; S_{pO₂}: peripheral oxygen saturation; ESS: Epworth Sleepiness Scale; FEV₁: forced expiratory volume in 1 s; FVC: forced vital capacity.

delivered on the placebo night and 22 ± 6 on the morphine night. Artefact-free data from 14 ± 3 CPAP reductions during non-REM sleep were used to quantify the traits during the placebo night and 14 ± 6 during the morphine night. Compared to placebo, 40 mg of morphine did not change upper airway collapsibility as measured by P_{crit} (figure 2a, $p=0.58$), genioglossus muscle responsiveness to increased negative pharyngeal pressure (figure 2b, $p=0.22$) or the respiratory arousal threshold (figure 2c, $p=0.41$). However, while the number of participants in whom data were acquired during both conditions was small for the secondary outcome of loop gain ($n=4$), morphine significantly reduced loop gain (more positive value) compared to placebo (figure 2d, $p=0.04$).

Ventilatory and genioglossus muscle responses to increased CO_2 on CPAP

Effects of hypercapnia on respiratory parameters

The hypercapnia protocol was introduced after the first two participants completed the study. Of the remaining 19 participants, there was a technical issue (e.g. target hypercapnia levels were not achieved or a major mask leak) in five participants. Thus, 14 participants successfully completed the hypercapnia protocol, and whose data were analysed. Overall, with increasing CO_2 levels epiglottic pressure swings became more negative ($p=0.04$), inspiratory time tended to decrease ($p=0.05$) and expiratory time

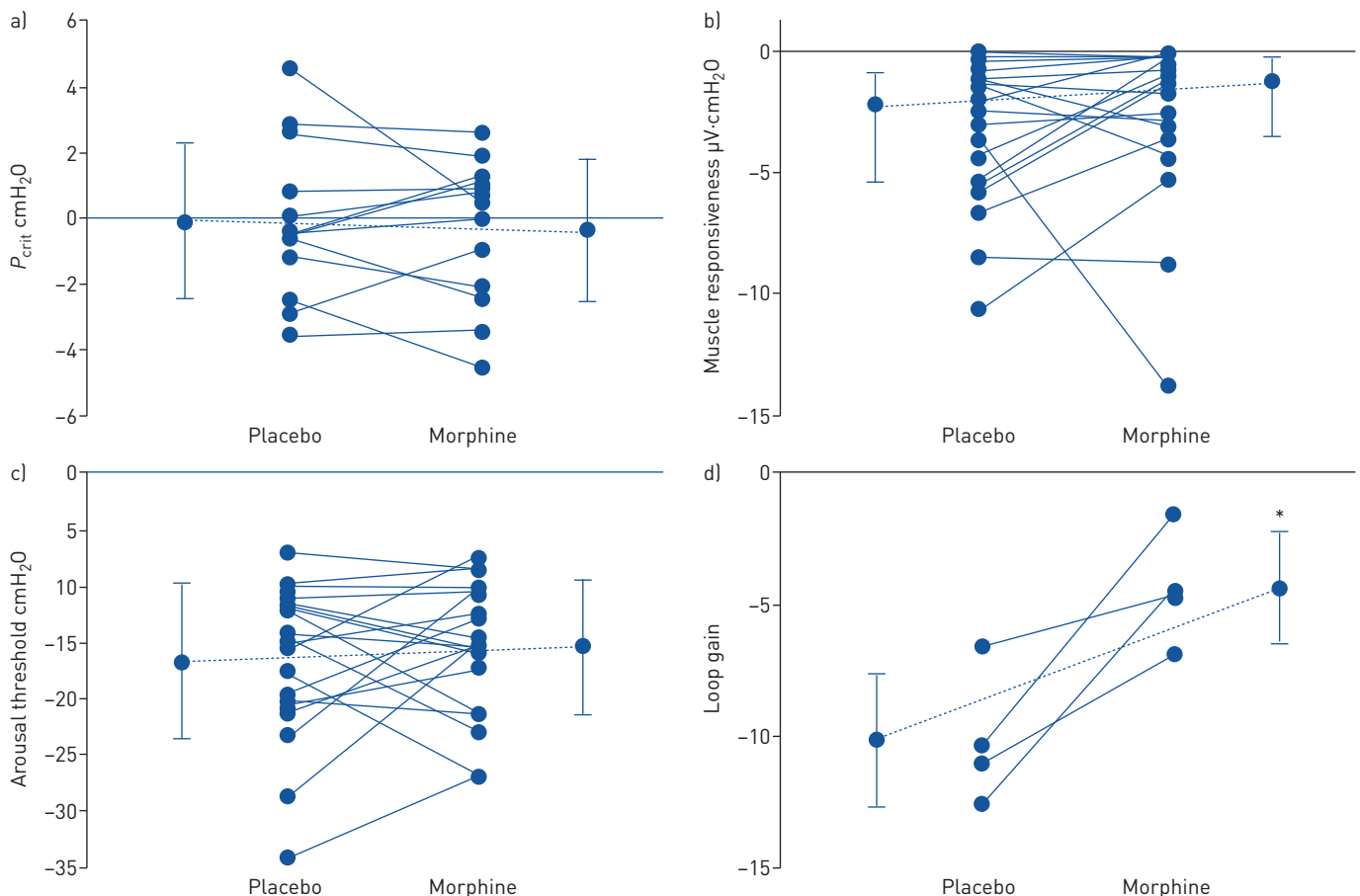


FIGURE 2 a) Pharyngeal critical closure pressure (P_{crit}) on morphine versus placebo during non-rapid eye movement (REM) sleep. Individual data from 13 participants in whom P_{crit} data were available during both conditions are displayed (P_{crit} data was obtained for only one night in four participants and no P_{crit} data were obtained during either night in four additional participants). Adjacent data indicate the group mean \pm SD for each condition. b) Slope of the relationship between peak genioglossus muscle activity to increasing negative epiglottic pressure (muscle responsiveness) on morphine versus placebo during non-REM sleep. Individual data from 20 participants in whom muscle responsiveness data were available during both conditions are displayed (data were not obtained in one participant as he was unable to obtain sufficient sleep on continuous positive airway pressure therapy). Adjacent data indicate the group median and interquartile range for each condition. c) Respiratory arousal threshold on morphine versus placebo during non-REM sleep. Individual data from 19 participants in whom arousal threshold data were available during both conditions are displayed (inadequate data for arousal threshold quantification in two participants). Adjacent data indicate the group mean \pm SD for each condition. d) Loop gain on morphine versus placebo during non-REM sleep. Individual data from four participants in whom loop gain data were available during both conditions are displayed (data were obtained in a single night for six participants and in 11 participants there were insufficient replicate trials to quantify loop gain). Adjacent data indicate the group mean \pm SD for each condition.

*: significant difference between conditions.

TABLE 2 Respiratory parameters during the hypercapnic protocol on continuous positive airway pressure (CPAP)

	Placebo			Morphine		
	Baseline [#]	+5 mmHg [¶]	+7.5 mmHg ⁺	Baseline [#]	+5 mmHg [¶]	+7.5 mmHg ⁺
CO ₂ change from baseline mmHg		4.87±0.53	8.03±0.80		5.33±0.29	7.95±0.51
PIF L·s ⁻¹	0.57±0.04	0.68±0.04	0.76±0.05	0.62±0.03	0.68±0.03	0.70±0.04
V _T L	0.50±0.02	0.55±0.02	0.56±0.03	0.50±0.01	0.53±0.02	0.51±0.03
f _R breaths/min	13.0±0.6	14.1±0.4	15.2±0.6	11.1±0.5 [§]	12.3±0.5 [§]	13.0±0.7 [§]
t _I s	2.08±0.10	1.94±0.07	1.84±0.09	1.94±0.08 [§]	1.85±0.06 [§]	1.77±0.08 [§]
t _E s	2.69 ±0.14	2.39±0.06	2.20±0.10	3.57±0.18 [§]	3.26±0.15 [§]	3.09±0.17 [§]

Data are presented as mean±SEM. CO₂: carbon dioxide; PIF: peak inspiratory flow; V_T: tidal volume; f_R: respiratory frequency; t_I: inspiratory time; t_E: expiratory time. [#]: therapeutic CPAP during non-rapid eye movement sleep; [¶]: 5 mmHg increase in end-tidal CO₂ above baseline condition; ⁺: 7.5 mmHg increase in end-tidal CO₂ above baseline condition; [§]: significant difference compared to the equivalent condition during placebo. Refer to the text for overall changes in respiratory parameters with increasing CO₂ levels.

decreased ($p=0.02$), whereas peak inspiratory flow ($p<0.01$), breathing frequency ($p<0.01$), tidal volume ($p=0.047$) and minute ventilation increased (table 2 and figure 3).

Effects of morphine versus placebo on respiratory parameters during hypercapnia

The targeted increases in P_{ETCO_2} from baseline were achieved during both conditions (table 2, figure 3a). However, consistent with reduced minute ventilation with morphine (figure 3b, $p<0.01$), absolute P_{ETCO_2} levels tended to be higher during the morphine night, including at baseline (figure 3a).

Minute ventilation increased to a similar extent from baseline during morphine and placebo nights during the +5 mmHg condition. However, this was not the case during the +7.5 mmHg condition, in which the ventilatory response to hypercapnia was reduced during the morphine condition (figure 3b, interaction effect $p=0.02$). Furthermore, epiglottic pressure swings were less during morphine compared to placebo (figure 3c, $p=0.04$). Inspiratory time was lower ($p=0.04$), while expiratory time was prolonged ($p<0.01$) and respiratory frequency was less ($p<0.01$) during morphine *versus* placebo. Tidal volume ($p=0.37$) and peak inspiratory flow ($p=0.89$) did not differ between conditions (table 2).

Genioglossus muscle activity

Peak (24.0 ± 24.1 *versus* 25.4 ± 33.1 μV , $p=0.85$) and tonic (10.1 ± 11.2 *versus* 8.3 ± 10.3 μV , $p=0.59$) genioglossus muscle activity were similar between morphine and placebo conditions on stable therapeutic CPAP. Peak genioglossus EMG activity increased with hypercapnia (figure 4a, $p=0.03$). There was no overall increase in tonic activity with hypercapnia (figure 4b, $p=0.24$). The pairwise comparisons indicated that increases in peak genioglossus EMG from baseline were significant at the +5 mmHg ($p=0.01$) and +7.5 mmHg ($p=0.02$) levels during placebo, whereas there were no significant changes from baseline during the morphine condition (figure 4a, $p>0.11$). Similarly, the pairwise comparisons indicated that tonic EMG tended to increase from baseline to the +7.5 mmHg condition during placebo ($p=0.05$), but there was no change from baseline during the morphine condition ($p>0.33$).

Discussion

The main findings of this study are that a single dose of 40 mg of MS-Contin does not systematically impair upper airway collapsibility, muscle responsiveness or the respiratory arousal threshold in males with predominantly moderately severe OSA. This is consistent with our recent clinical trial data in which 30 and 40 mg of morphine (pilot study and main trial, respectively) did not systematically worsen OSA severity as measured by the AHI or time with arterial oxygen saturation $<90\%$ in males with mild–moderately severe OSA [23, 28]. In contrast, respiratory control as measured by loop gain and ventilatory responses to CO₂ were reduced by morphine, particularly at increased CO₂ levels, consistent with blunted chemosensitivity [28, 35]. Similarly, genioglossus activity increased with hypercapnia during the placebo condition, but not during the morphine condition. These findings provide novel insights into the effects of a moderate dose of morphine on upper airway physiology and respiratory control during sleep in OSA.

Pharyngeal critical closure pressure

In contrast to the current findings, a previous study conducted in five healthy young males aged between 27 and 31 years found that the opioid antagonist naloxone reduces P_{crit} post-sleep fragmentation by blocking the effects of endorphin [15]. This suggests that endogenous opioids increase pharyngeal

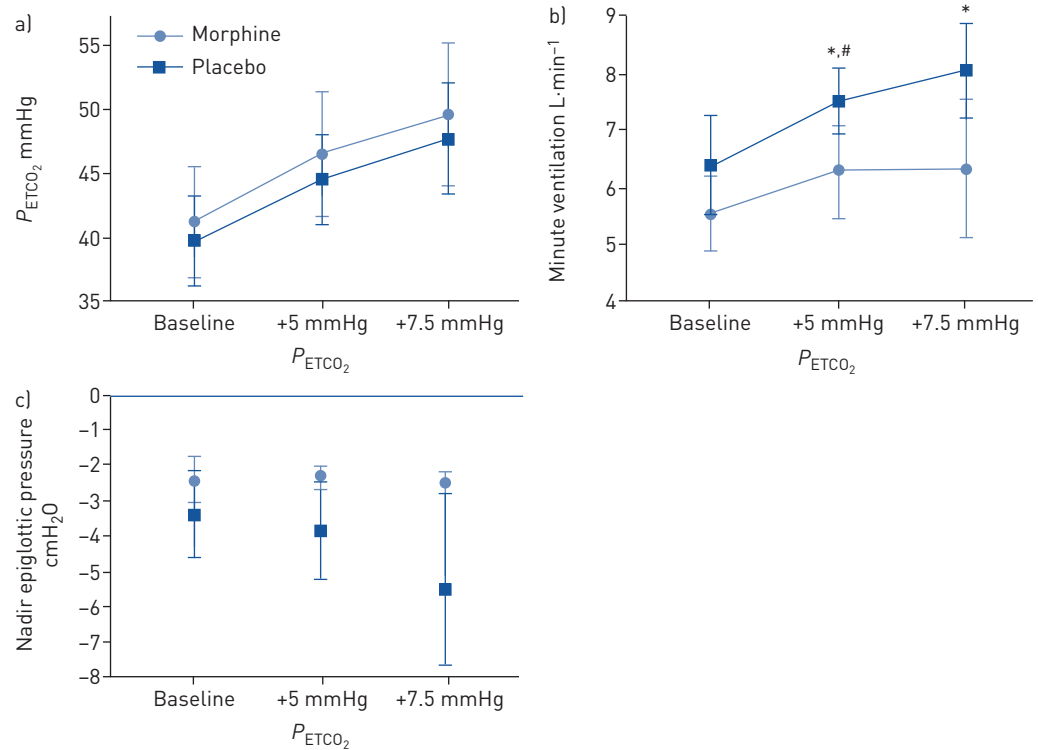


FIGURE 3 a) End-tidal carbon dioxide tension (P_{ETCO_2}), b) minute ventilation and c) epiglottic pressure values with morphine *versus* placebo during the hypercapnia protocol (baseline on therapeutic continuous positive airway pressure during non-rapid eye movement sleep and with 5 and 7.5 mmHg increases in P_{ETCO_2} above baseline (+5 mmHg and +7.5 mmHg, respectively). Values are estimated group mean and 95% confidence intervals from the mixed model analyses (n=14 individuals successfully completed this sub-protocol). *: statistically significant difference from baseline within the placebo condition; #: statistically significant difference from baseline within the morphine condition.

collapsibility under these conditions. The reason for the apparent difference between this finding and the current study include differences in participant characteristics (five healthy young males *versus* middle-aged males with OSA), study intervention and experimental protocols. Consistent with the current findings during sleep, two standard doses of hydromorphone (2 and 4 mg) did not increase upper airway resistance during wakefulness in healthy individuals [36].

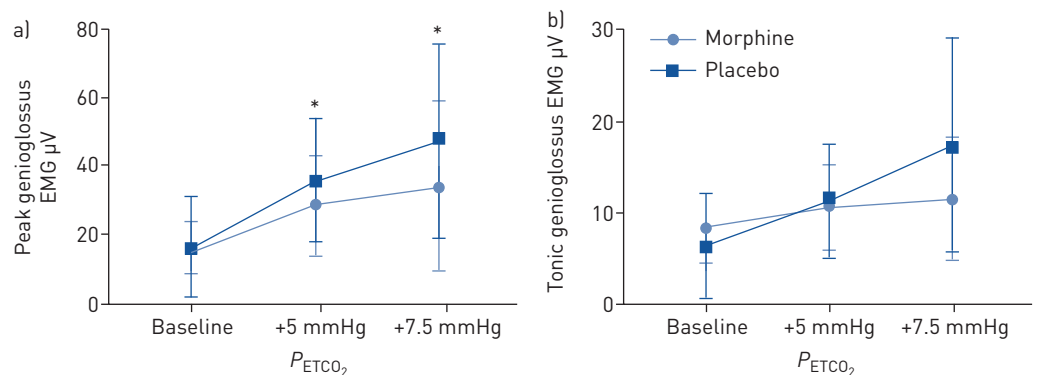


FIGURE 4 a) Peak and b) tonic genioglossus muscle responsiveness on morphine *versus* placebo during the hypercapnia protocol (baseline on therapeutic continuous positive airway pressure during non-rapid eye movement sleep and with 5 and 7.5 mmHg increases in end-tidal carbon dioxide tension (P_{ETCO_2}) above baseline (+5 mmHg and +7.5 mmHg, respectively). Values are estimated group mean and 95% confidence intervals from the mixed model analyses (n=14 individuals successfully completed this sub-protocol). EMG: electromyography. *: statistically significant difference from baseline within the placebo condition.

Genioglossus muscle activity and responsiveness to negative pressure and hypercapnia

Experiments conducted on anaesthetised rats indicate that morphine reduces hypoglossal motoneuron activity *via* increases in acetylcholine [37] to inhibit genioglossus muscle activity [14]. In contrast, but consistent with the wakefulness data obtained with hydromorphone in healthy individuals [36], the current findings in males with OSA did not reveal any systematic reductions in pharyngeal muscle activity on therapeutic CPAP or during transient airway narrowing during sleep with morphine. While the reasons for the apparent discrepancy are unknown, factors such as the use of different opioid classes and doses, location of administration and species differences may be important. Nonetheless, the current findings on nasal CPAP which minimises negative pharyngeal pressure changes suggest that 40 mg of morphine does not reduce central neural drive to genioglossus during sleep. Similarly, pharyngeal reflexes to the epiglottic pressure swings that occur during airway narrowing and closure prior to arousal are not impaired with 40 mg of morphine. However, consistent with diminished reflex activation to hypercapnia, genioglossus muscle activity increased with hypercapnia during placebo, but not during the morphine condition. Thus, while larger follow-up studies are required, impairment of this important protective mechanism with morphine may perpetuate blood gas disturbances in susceptible individuals.

Respiratory arousal threshold

Opioids are often associated with sedation *via* suppression of cortical arousal systems [38]. Thus, morphine would be expected to increase the arousal threshold to respiratory stimuli. However, acute opioid administration is also known to cause sleep disruption and changes in the sleep architecture [39]. These contrasting effects likely explain the lack of overall change in the respiratory arousal threshold in the current study and considerable interparticipant variability in response to morphine. These findings are consistent with recent wakefulness physiology data, in which 40 mg of MS-Contin did not alter upper airway tactile sensation, respiratory load detection thresholds or respiratory load magnitude perception in people with obstructive sleep apnoea [40]. In future studies it will be important to determine whether higher doses and more prolonged use result in sustained increases in the threshold to arousal from respiratory stimuli such as airway narrowing, which, if severe, could place OSA patients at risk of harm.

Ventilatory response to hypercapnia and loop gain

Reduced ventilatory responses to hypercapnia with morphine during sleep as detected in the current study are consistent with prior wakefulness data in healthy individuals [22, 36] and our recent findings in males with OSA [28]. Indeed, several studies have shown that acute opioid use reduces central respiratory responses to increased CO₂ levels [35, 41], the slope of the hypercapnic [22] and hypoxic [22, 42] ventilatory responses during wakefulness. Interestingly, it was only at the higher level of hypercapnia (+7.5 mmHg above baseline) that diminished ventilatory responses during morphine were observed. Thus, these protective mechanisms seem to be preserved with this dose of morphine up to +5 mmHg, but not beyond. Accordingly, patients who experience more severe changes in blood gases (*e.g.* severe OSA in the morbidly obese) may be especially at risk of harm with opioids.

Methodological considerations

While these detailed physiological experiments are the first to quantify changes in the key phenotypic causes of OSA with morphine during sleep, there are several limitations that need to be acknowledged. Firstly, only untreated males with OSA were studied. Given the relatively small sample size of this complex repeated-measures study, this design was felt necessary to avoid the confounding influence of fluctuating hormonal levels throughout menstrual cycle in females, which are known to alter respiratory control [43]. Thus, it will be crucial to include females in larger, appropriately designed future trials. Indeed, to detect differences in P_{crit} , arousal threshold and muscle responsiveness between morphine and placebo of the magnitude observed in the current study (which are arguably not of physiological/clinical importance), a sample in the order of 100 or more would be required. In addition, the number of participants in whom loop gain data were available during both conditions was small. This reflects the complexity of the measurement techniques and the primary objective of the current study to quantify the other three traits. Indeed, quantification of all four traits typically requires two nights of data collection [11], which was not feasible for this study. Nonetheless, despite the small sample size we did detect important changes in loop gain, which were further complemented by the data obtained during the hypercapnia protocol. However, these findings would benefit from replication in a larger cohort. Finally, we studied people who predominantly had untreated moderately severe OSA and who were largely MS-Contin/opioid naïve, during a standard single dose of oral morphine. Thus, the current findings may not be generalisable beyond these conditions. Accordingly, it remains a priority to investigate the effects of different doses of morphine including higher doses beyond the moderate 40-mg dose used in the current study. In addition, it will be important for future appropriately designed studies on sleep, breathing and upper airway

physiology to investigate different durations of exposure, types of opioids and patient characteristics that include both males and females with a wide range of OSA severities.

Clinical implications and conclusions

In the light of the current opioid epidemic and its widespread adverse consequences, the current study provides important, novel insights into the mechanisms of morphine on upper airway physiology and respiratory control during sleep in OSA. Specifically, while caution is warranted, the lack of systematic impairment in upper airway collapsibility, pharyngeal muscle responsiveness and respiratory arousal threshold using gold-standard methodology is important from a safety perspective, at least at the acute dose of morphine tested and in this patient population. In the absence of changes in these key traits with 40 mg of morphine, the detected changes in respiratory control may have differential effects on OSA severity. Indeed, consistent with pilot data with 30 mg of acute morphine [23], reductions in loop gain with 40 mg of morphine may stabilise breathing and improve blood gases for certain OSA patients (*i.e.* those with mild-moderate OSA with unstable respiratory control). Conversely, it may put others at risk, due to centrally mediated hypoventilation effects of morphine and diminished ability to respond to high levels of CO₂ *via* impairment of protective respiratory/upper airway reflexes during obstructive events (*i.e.* morbidly obese patients with severe disease or with co-administration of other central nervous system depressants). Similar to our previous report [23] and clinical findings from the larger cohort [28], there was substantial interindividual variability in blood morphine concentrations. This may explain, at least in part, some of the variability in responses with morphine to some of the traits detected. Ultimately, accurate detection tools are required to determine which patients are most at risk of harm *versus* those in whom they can be used safely. Given the scope of the opioid problem, there is an urgent need for further research on this important topic, including investigation into the effects on sleep and breathing using different classes of opioids, different patient populations and longer durations of use.

Acknowledgements: The authors would like to thank our collaborators at the Woolcock Institute of Medical Research (The University of Sydney, Sydney, Australia) (Keith Wong and Brendon Yee) and the Prince of Wales Hospital (Sydney) (David McKenzie) who assisted with participant recruitment and/or medical oversight for this study. We would also like to thank the Prince of Wales Hospital Clinical Trials Pharmacy team for preparing the study interventions and coordinating the randomisation process. Finally, we would like to thank Andrew Somogyi and his team from the University of Adelaide for performing the blood morphine concentration analyses.

Author contributions: D.J. Eckert, D. Wang and R.R. Grunstein developed the study concepts. D.J. Eckert designed the study. R.T. Martins, J.C. Carberry and D.J. Eckert collected and analysed the data. All authors provided important insight on data interpretation and contributed to the final version of the manuscript.

Conflict of interest: R.T. Martins reports grants (1043633, 1060992) from National Health and Medical Research Council (NHMRC), during the conduct of the study. J.C. Carberry reports grants (1060992) from National Health and Medical Research Council (NHMRC) of Australia and NeuroSleep-Centre for Research Excellence, grants (1043633) from NHMRC, during the conduct of the study. D. Wang reports grants (1043633, 1060992) from National Health and Medical Research Council of Australia (NHMRC), during the conduct of the study. L. Rowsell reports grants (1043633, 1060992) from National Health and Medical Research Council of Australia (NHMRC), during the conduct of the study. R.R. Grunstein reports grants (1043633, 1060992) from National Health and Medical Research Council of Australia (NHMRC), during the conduct of the study; Collaborative Research Centre (CRC) consortium grant between the Australian government, academia and industry (Philips Healthcare as major industry partner), and has participated on advisory board for Teva and Merck, outside the submitted work. D.J. Eckert reports grants (1043633, 1060992) from National Health and Medical Research Council of Australia (NHMRC), during the conduct of the study; grants and personal fees for consultancy from Bayer, grants and personal fees for consultancy and advisory board work from Apnimed, and a Collaborative Research Centre (CRC-P) consortium grant between the Australian government, academia and industry, outside the submitted work.

Support statement: This work was supported by the National Health and Medical Research Council (NHMRC) of Australia (1043633, 1060992 and 1049814). D.J. Eckert is supported by a NHMRC Senior Research Fellowship (1116942). R.R. Grunstein is supported by a NHMRC Senior Principal Research Fellowship (1106974). Funding information for this article has been deposited with the Crossref Funder Registry.

References

- 1 Leong M, Murnion B, Haber PS. Examination of opioid prescribing in Australia from 1992 to 2007. *Intern Med J* 2009; 39: 676–681.
- 2 Ruhm CJ. Geographic variation in opioid and heroin involved drug poisoning mortality rates. *Am J Prev Med* 2017; 53: 745–753.
- 3 Volkow ND, Frieden TR, Hyde PS, *et al.* Medication-assisted therapies – tackling the opioid-overdose epidemic. *N Engl J Med* 2014; 370: 2063–2066.
- 4 Okie S. A flood of opioids, a rising tide of deaths. *N Engl J Med* 2010; 363: 1981–1985.
- 5 Rudd RA, Aleshire N, Zibbell JE, *et al.* Increases in drug and opioid overdose deaths – United States, 2000–2014. *MMWR Morb Mortal Wkly Rep* 2016; 64: 1378–1382.
- 6 Rudd RA, Seth P, David F, *et al.* Increases in drug and opioid-involved overdose deaths – United States, 2010–2015. *MMWR Morb Mortal Wkly Rep* 2016; 65: 1445–1452.

- 7 Warner M, Chen LH, Makuc DM, *et al.* Drug poisoning deaths in the United States, 1980–2008. *NCHS Data Brief* 2011; 81: 1–8.
- 8 Schiller EY, Mechanic OJ. Opioid Overdose. Treasure Island, FL, StatPearls, 2020.
- 9 Leino K, Mildh L, Lertola K, *et al.* Time course of changes in breathing pattern in morphine- and oxycodone-induced respiratory depression. *Anaesthesia* 1999; 54: 835–840.
- 10 Subramani Y, Nagappa M, Wong J, *et al.* Death or near-death in patients with obstructive sleep apnoea: a compendium of case reports of critical complications. *Br J Anaesth* 2017; 119: 885–899.
- 11 Eckert DJ, White DP, Jordan AS, *et al.* Defining phenotypic causes of obstructive sleep apnea. Identification of novel therapeutic targets. *Am J Respir Crit Care Med* 2013; 188: 996–1004.
- 12 Eckert DJ. Phenotypic approaches to obstructive sleep apnoea – new pathways for targeted therapy. *Sleep Med Rev* 2018; 37: 45–59.
- 13 Lalley PM. μ -opioid receptor agonist effects on medullary respiratory neurons in the cat: evidence for involvement in certain types of ventilatory disturbances. *Am J Physiol Regul Integr Comp Physiol* 2003; 285: R1287–R1304.
- 14 Hajiha M, DuBord MA, Liu H, *et al.* Opioid receptor mechanisms at the hypoglossal motor pool and effects on tongue muscle activity *in vivo*. *J Physiol* 2009; 587: 2677–2692.
- 15 Meurice JC, Marc I, Sériès F. Effects of naloxone on upper airway collapsibility in normal sleeping subjects. *Thorax* 1996; 51: 851–852.
- 16 Tagaito Y, Isono S, Nishino T. Upper airway reflexes during a combination of propofol and fentanyl anesthesia. *Anesthesiology* 1998; 88: 1459–1466.
- 17 Ehsan Z, Mahmoud M, Shott SR, *et al.* The effects of anesthesia and opioids on the upper airway: a systematic review. *Laryngoscope* 2016; 126: 270–284.
- 18 Abrams JT, Horrow JC, Bennett JA, *et al.* Upper airway closure: a primary source of difficult ventilation with sufentanil induction of anesthesia. *Anesth Analg* 1996; 83: 629–632.
- 19 Ni YL, Lo YL, Lin TY, *et al.* Conscious sedation reduces patient discomfort and improves satisfaction in flexible bronchoscopy. *Chang Gung Med J* 2010; 33: 443–452.
- 20 Xu J, Yao Z, Li S, *et al.* A non-tracheal intubation (tubeless) anesthetic technique with spontaneous respiration for upper airway surgery. *Clin Invest Med* 2013; 36: E151–E157.
- 21 Eckenhoff JE, Oech SR. The effects of narcotics and antagonists upon respiration and circulation in man. A review. *Clin Pharm Ther* 1960; 1: 483–524.
- 22 Weil JV, McCullough RE, Kline JS, *et al.* Diminished ventilatory response to hypoxia and hypercapnia after morphine in normal man. *N Engl J Med* 1975; 292: 1103–1106.
- 23 Wang D, Somogyi AA, Yee BJ, *et al.* The effects of a single mild dose of morphine on chemoreflexes and breathing in obstructive sleep apnea. *Respir Physiol Neurobiol* 2013; 185: 526–532.
- 24 Wang D, Eckert DJ, Grunstein RR. Drug effects on ventilatory control and upper airway physiology related to sleep apnea. *Respir Physiol Neurobiol* 2013; 188: 257–266.
- 25 Lambertsen CJ. Carbon dioxide and respiration in acid-base homeostasis. *Anesthesiology* 1960; 21: 642–651.
- 26 Keifer JC, Baghdoyan HA, Lydic R. Sleep disruption and increased apneas after pontine microinjection of morphine. *Anesthesiology* 1992; 77: 973–982.
- 27 Dimsdale JE, Norman D, DeJardin D, *et al.* The effect of opioids on sleep architecture. *J Clin Sleep Med* 2007; 3: 33–36.
- 28 Rowsell L, Wong KKH, Yee BJ, *et al.* The effect of acute morphine on obstructive sleep apnoea: a randomised double-blind placebo-controlled crossover trial. *Thorax* 2019; 74: 177–184.
- 29 Carberry JC, Hensen H, Fisher LP, *et al.* Mechanisms contributing to the response of upper-airway muscles to changes in airway pressure. *J Appl Physiol* 2015; 118: 1221–1228.
- 30 Wellman A, Eckert DJ, Jordan AS, *et al.* A method for measuring and modeling the physiological traits causing obstructive sleep apnea. *J Appl Physiol* 2011; 110: 1627–1637.
- 31 Nicholas CL, Bei B, Worsnop C, *et al.* Motor unit recruitment in human genioglossus muscle in response to hypercapnia. *Sleep* 2010; 33: 1529–1538.
- 32 Lo YL, Jordan AS, Malhotra A, *et al.* Genioglossal muscle response to CO₂ stimulation during NREM sleep. *Sleep* 2006; 29: 470–477.
- 33 Kirkness JP, Peterson LA, Squier SB, *et al.* Performance characteristics of upper airway critical collapsing pressure measurements during sleep. *Sleep* 2011; 34: 459–467.
- 34 Kehlmann GB, Owens RL, Wellman A, *et al.* Variability and reproducibility of the respiratory arousal threshold in untreated obstructive sleep apnea patients. *Am J Respir Crit Care Med* 2010; 181: A2223.
- 35 Bailey PL, Lu JK, Pace NL, *et al.* Effects of intrathecal morphine on the ventilatory response to hypoxia. *N Engl J Med* 2000; 343: 1228–1234.
- 36 Robinson RW, Zwillich CW, Bixler EO, *et al.* Effects of oral narcotics on sleep-disordered breathing in healthy adults. *Chest* 1987; 91: 197–203.
- 37 Skulsky EM, Osman NI, Baghdoyan HA, *et al.* Microdialysis delivery of morphine to the hypoglossal nucleus of Wistar rat increases hypoglossal acetylcholine release. *Sleep* 2007; 30: 566–573.
- 38 Teichtahl H, Wang D. Sleep-disordered breathing with chronic opioid use. *Expert Opin Drug Saf* 2007; 6: 641–649.
- 39 Wang D, Teichtahl H. Opioids, sleep architecture and sleep-disordered breathing. *Sleep Med Rev* 2007; 11: 35–46.
- 40 Tomazini Martins R, Carberry JC, Gandevia SC, *et al.* Effects of morphine on respiratory load detection, load magnitude perception, and tactile sensation in obstructive sleep apnea. *J Appl Physiol* 2018; 125: 393–400.
- 41 Jaekle KA, Digre KB, Jones CR, *et al.* Central neurogenic hyperventilation: pharmacologic intervention with morphine sulfate and correlative analysis of respiratory, sleep, and ocular motor dysfunction. *Neurology* 1990; 40: 1715–1720.
- 42 Berkenbosch A, Teppema LJ, Olivier CN, *et al.* Influences of morphine on the ventilatory response to isocapnic hypoxia. *Anesthesiology* 1997; 86: 1342–1349.
- 43 Behan M, Wenninger JM. Sex steroidal hormones and respiratory control. *Respir Physiol Neurobiol* 2008; 164: 213–221.