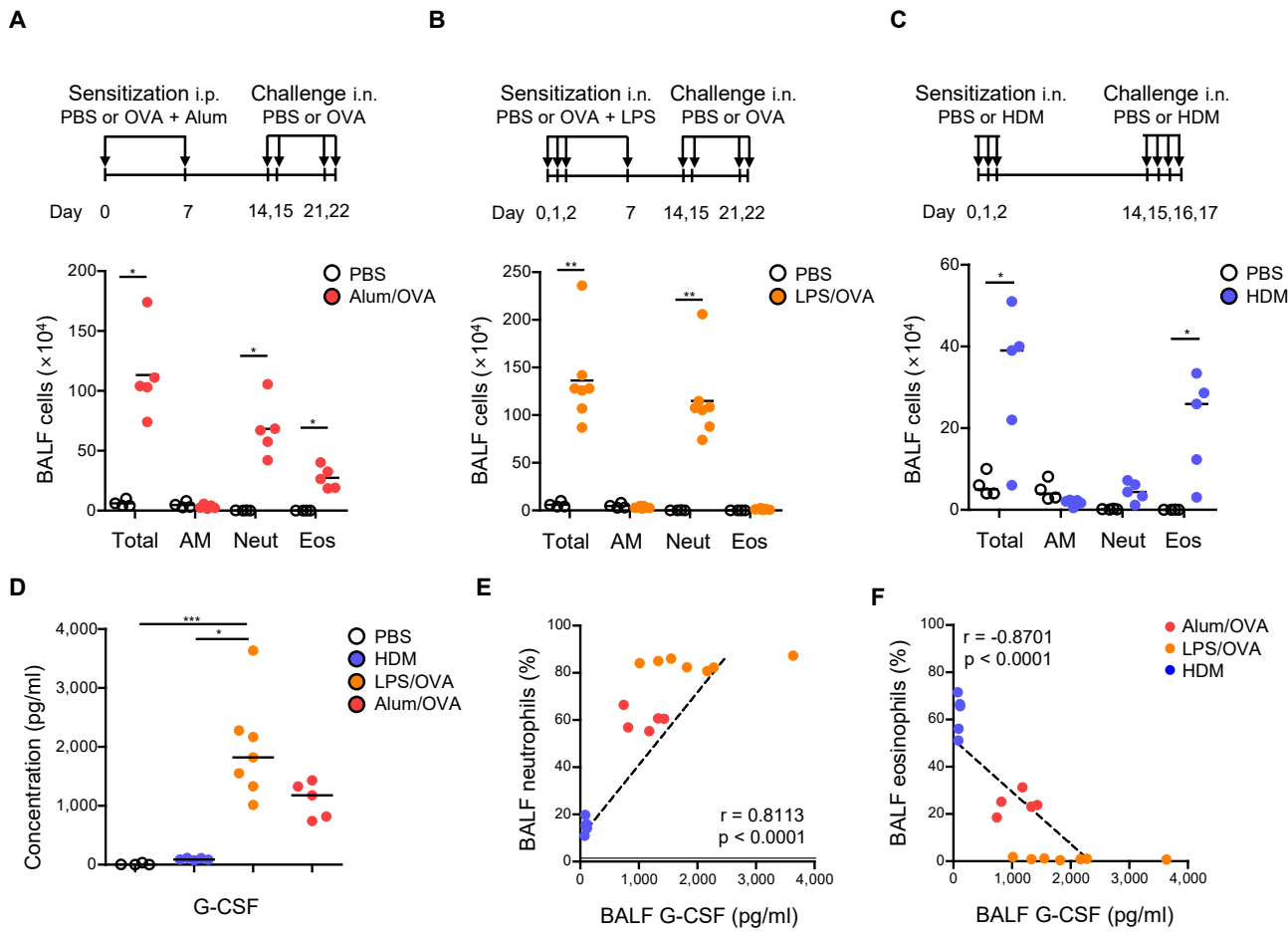
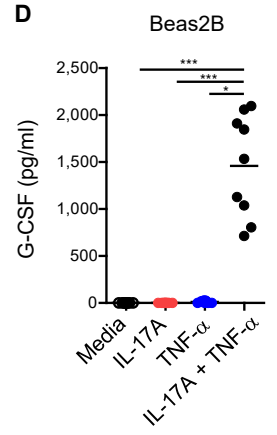
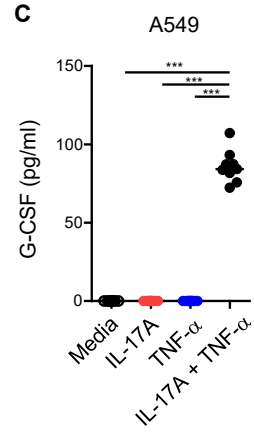
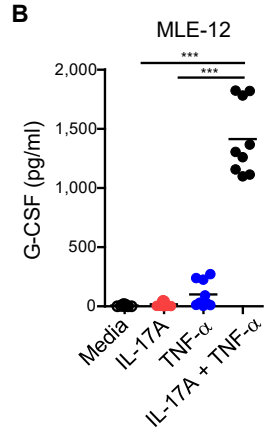
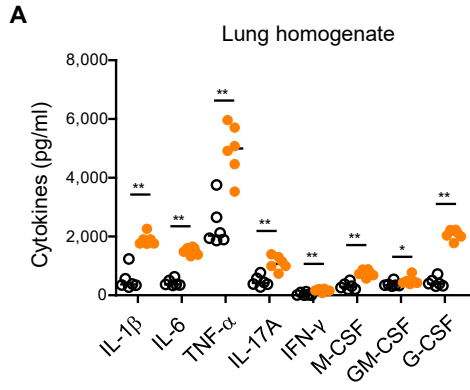


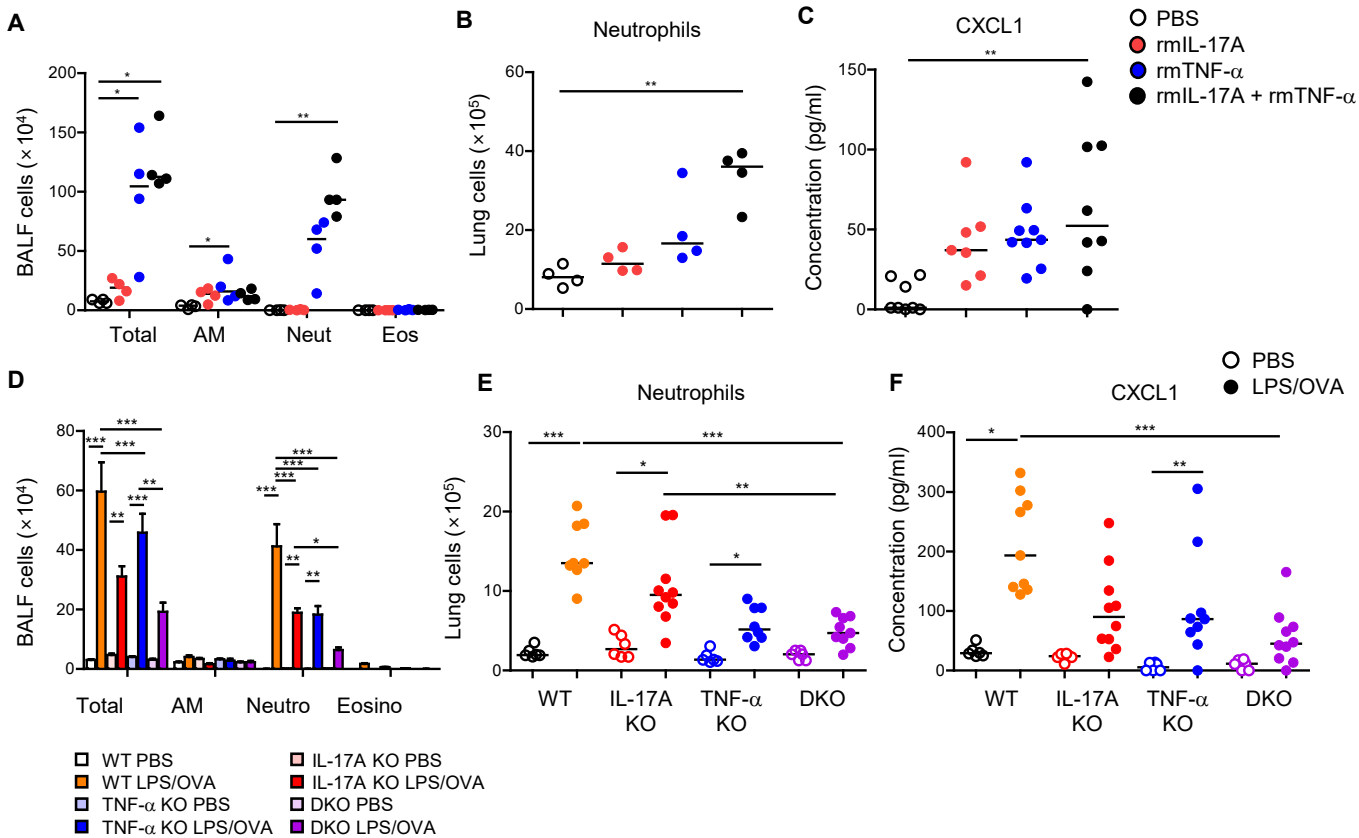
Supplemental Figure 1



Supplemental Figure 2

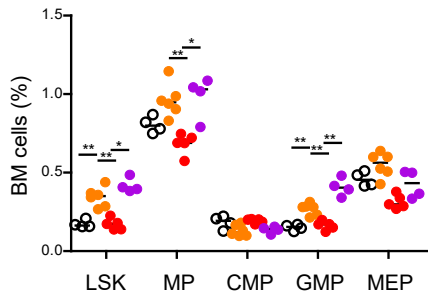


Supplemental Figure 3

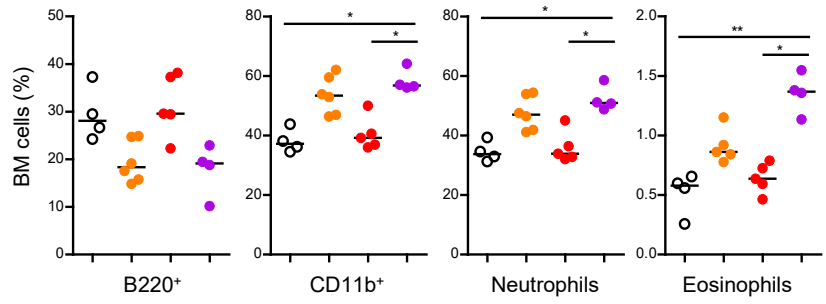


Supplemental Figure 4

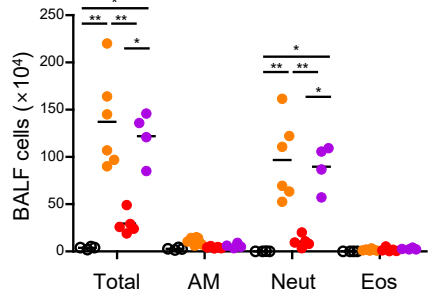
A



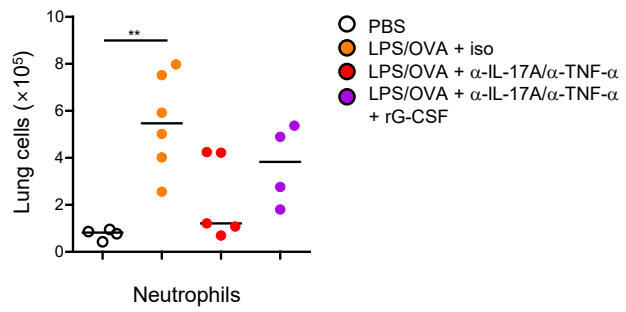
B



C



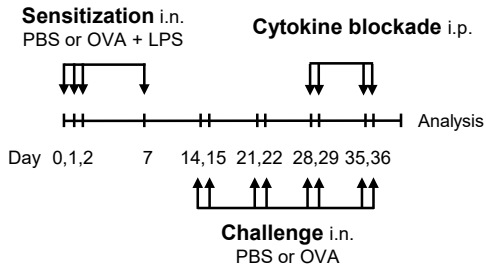
D



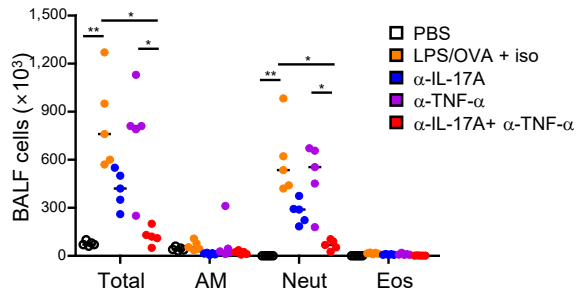
○ PBS
 ● LPS/OVA + iso
 ● LPS/OVA + α -IL-17A/ α -TNF- α
 ● LPS/OVA + α -IL-17A/ α -TNF- α + rG-CSF

Supplemental Figure 5

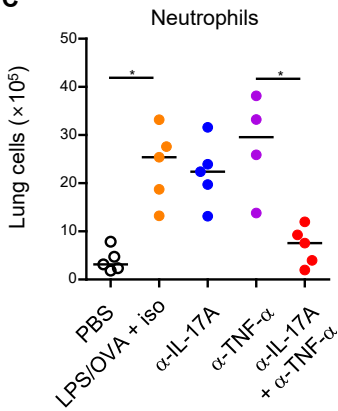
A



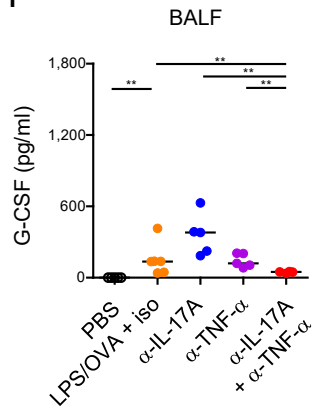
B



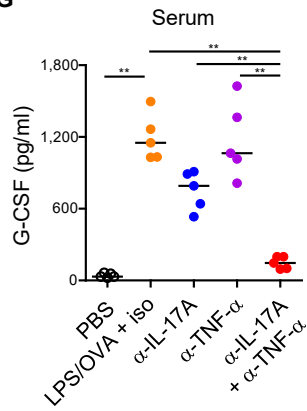
C



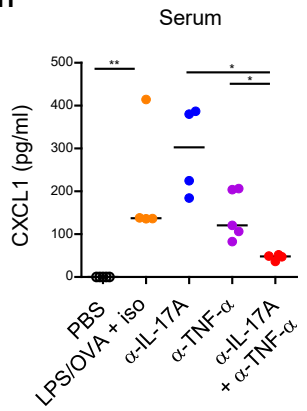
F



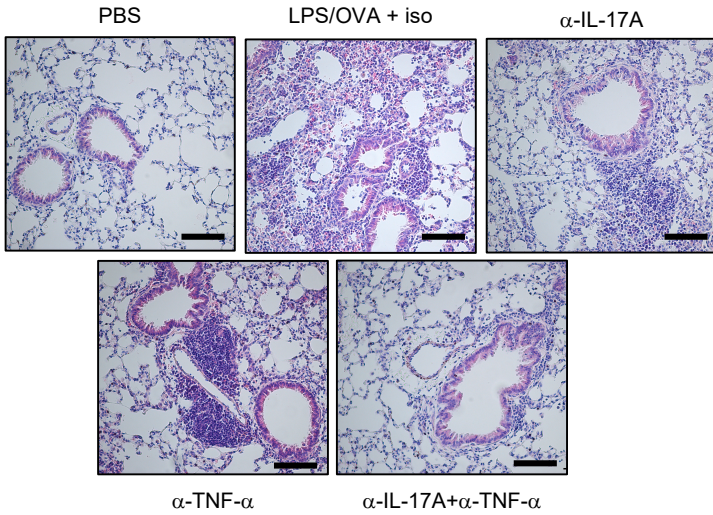
G



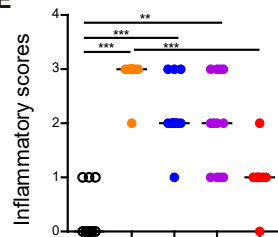
H



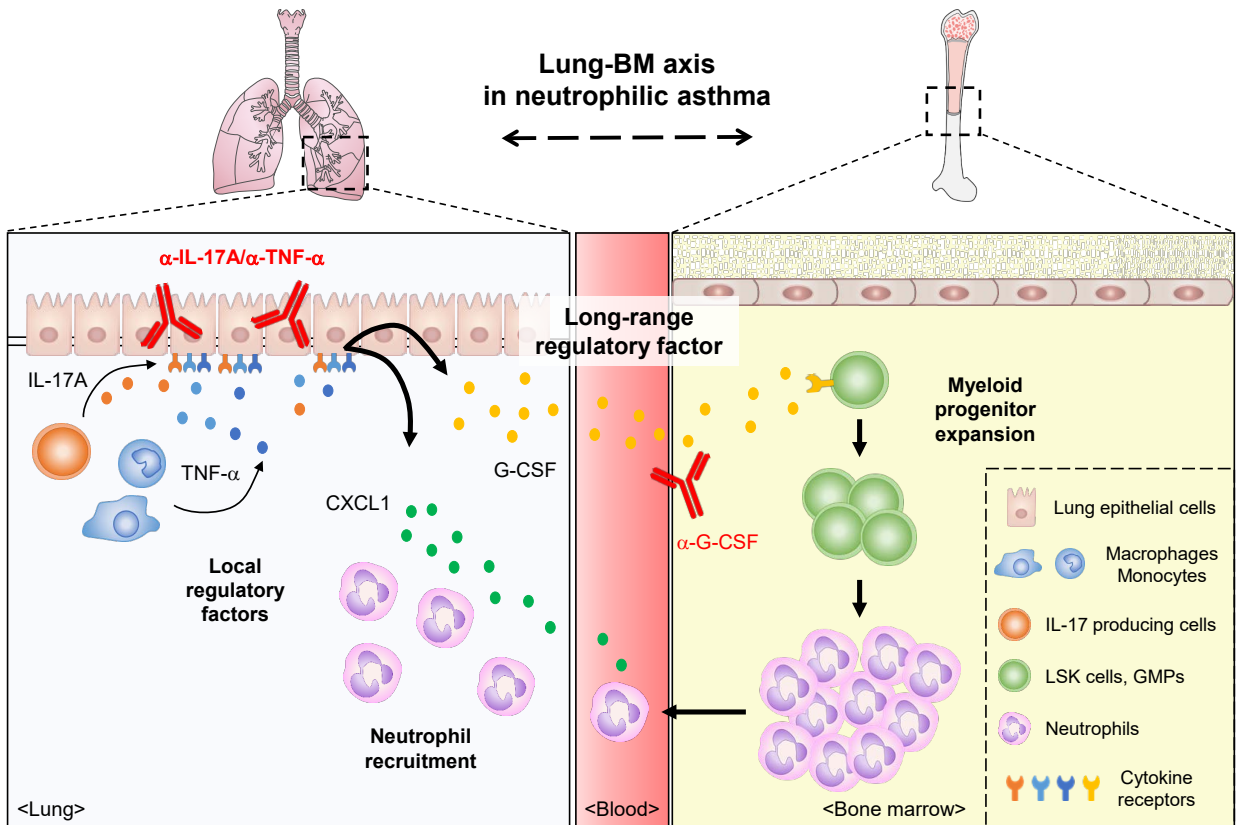
D



E



Supplemental Figure 6



Supplemental Table 1

Clinical parameters	Mixed	Neutrophilic	Eosinophilic	p-value
Number of subjects	64	95	56	-
Gender, males/females	26/38	51/44	23/33	0.1719
Age at first visit, years	57.5(45.75-72)	66(56-76) *	53(21-84) ¥	0.000022
Age at onset of asthma, years	47.18(30.85-58.34)	51.58(37.03-61.52)	39.58(17.38-73.94)	0.0131
Smoking status, NS/ES/CS	45/3/16	51/7/37	37/3/16	0.2821
Cigarettes smoked, pack years	0(0-1)	0(0-17.5)	0(0-100)	0.0396
Atopy (Y/N/ND)	37/24/3	30/57/8	32/20/4 ¥	0.0054
BMI, kg/m ²	24.22(21.66-25.9)	24.95(22.7-26.52)*	23.01(16.14-32.28) ¥	0.0091
Initial FEV1, % predicted	81.5(45-148)	78(38-119)	83(46-113)	0.1604
Initial FVC, % predicted	79.5(31-140)	77(23-125)	80(33-120)	0.298
Initial FEV1/FVC, % predicted	75(67.75-80)	72(63.5-82)	76.5(41-99)	0.1857
Number(%) of subjects undergoing >12% PFT2 _FEV1 in table	19(29.7%)	24(25.3%)	11(19.6%)	0.4484
Number(%) of subjects undergoing <10% PC20 in table	19(29.7%)	29(30.5%)	15(26.8%)	0.8849
PC ₂₀ metacholine, mg/mL	6.33(0.93-20.85)	7.47(1.65-25)	3.88(0.08-25)	0.0424
Use of inhaled steroids (µg/day)	500(160-520)	380(200-600)	535(160-1600)	0.6072
Use of systemic steroids (mg/day)	660(312.5-1987.5)	550(250-1530)	770(10-9500)	0.5494
Sputum profiles				
Sputum Total cell (x10 ⁵ /ml)	4.9(2-10)	3.2(1.5-7)	3(0.2-50)	0.3028
Macrophage (%)	4.16(1.88-8.38)	6.75(3.13-17.25) *	10.73(0-91.89) * ¥	0.001
Neutrophil (%)	83.83(77-88.88)	88.5(78.84-95.75) *	39.12(3.38-58.67) * ¥	1.20987E-28
Eosinophil (%)	7.21(4.24-12.43)	0(0-1.13) *	37.25(4.73-81.89) * ¥	8.51189E-40
Lymphocyte (%)	0(0-0.76)	0(0-0.25)	0(0-11)	0.9647
Columnar cells (%)	0(0-0)	0(0-0)	0(0-4.8)	0.6074
Annual exacerbation rate	0.12(0-0.54)	0.12(0-0.43)	0(0-3.44)	0.9886