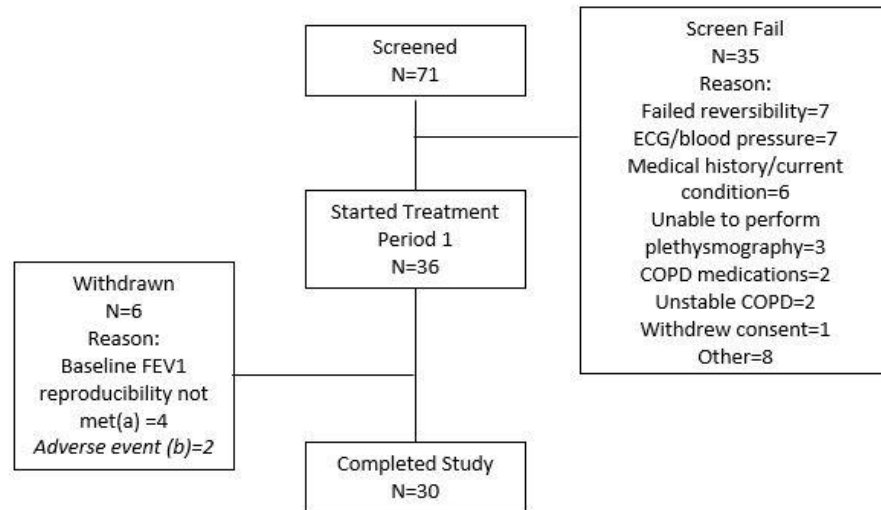


Study 1: Flow of patients



Abbreviations:

COPD=chronic obstructive pulmonary disorder

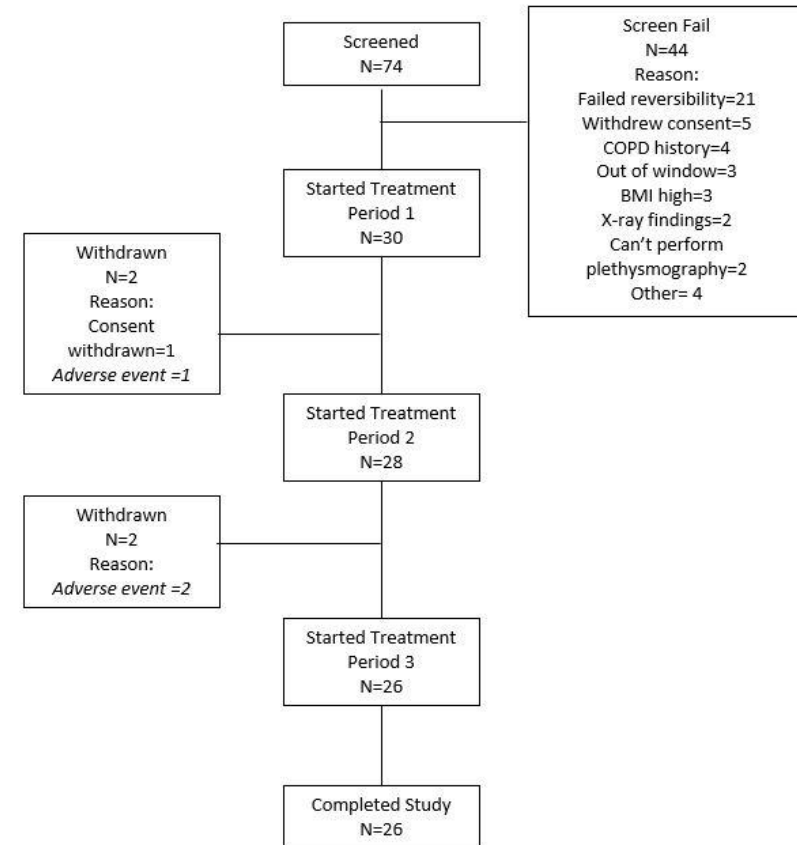
ECG= electrocardiogram

FEV1=forced expired volume in 1 second

(a) Pre-dose FEV1 not within 15% of the Visit 2 value at Visit 3 to 7 (to ensure consistent baseline for all treatments)

(b) Both were COPD exacerbations

Study 2: Flow of patients



Abbreviations:

BMI=body mass index

COPD=chronic obstructive pulmonary disorder