



“Prolonged shedding of rhinovirus and re-infection in adults with respiratory tract illness.” Kalina T. Zlateva, Jutte J.C. de Vries, Frank E.J. Coenjaerts, Anton M. van Loon, Theo Verheij, Paul Little, Christopher C. Butler, Herman Goossens, Margareta Ieven and Eric C.J. Claas on behalf of the GRACE Study Group. *Eur Respir J* 2014; 44: 169–177.

The name of one author (Margareta Ieven) was presented incorrectly in the first published versions of the above article. The error has been corrected on the online version of the article, and the full author list is presented above in its correct form.

Furthermore, an amendment has been made to figure 1 after the article was initially published. The text “11 (65%) RV infection” has been corrected to “11 (65%) RV re-infection”. The figure is presented in its correct form below.

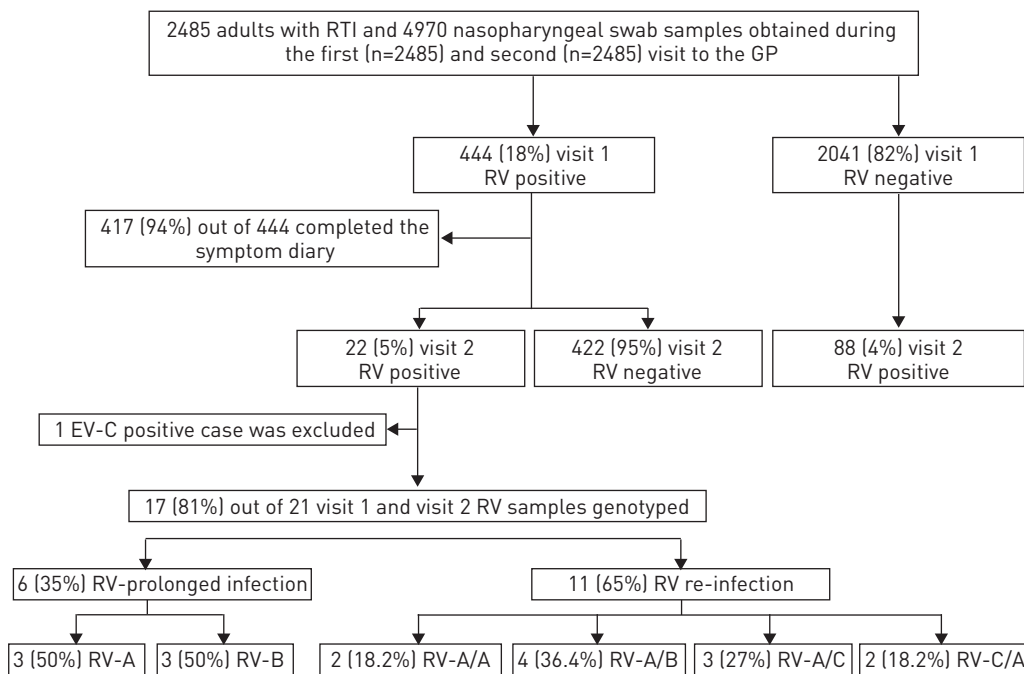


FIGURE 1 Study enrolment and results of rhinovirus (RV) testing in adults with acute cough/lower respiratory tract infection. EV-C: enterovirus C; A, B and C refer to the RV species.