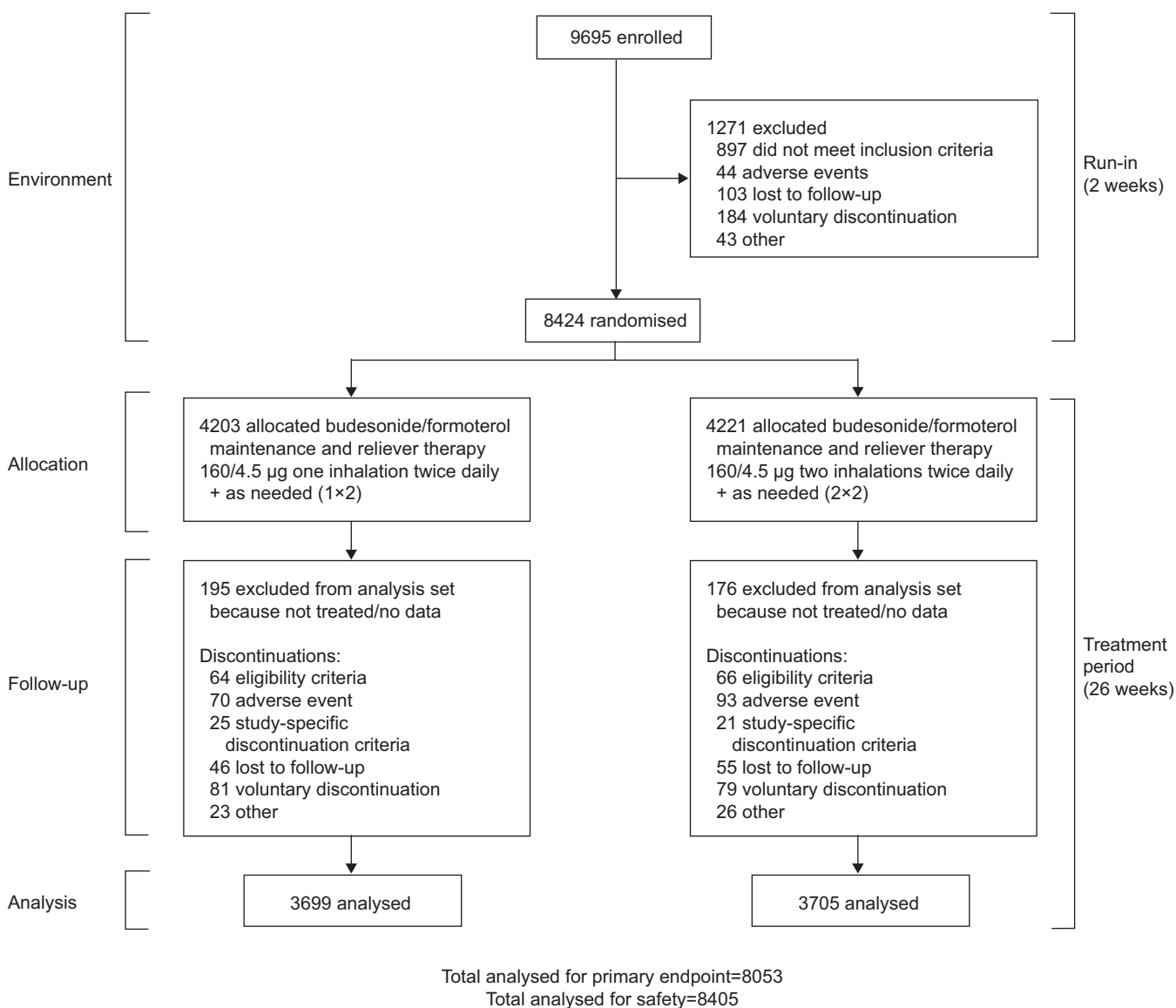




## AUTHOR CORRECTION

**“Comparison of two twice-daily doses of budesonide/formoterol maintenance and reliever therapy”. M. Aubier, R. Buhl, T. Ekström, J. Ostinelli, C.P. van Schayck, O. Selroos and J. Haughney. *Eur Respir J* 2010; 36: 524–530.**

The authors have noticed that the therapies mentioned in the “Allocation” boxes in figure 1 of the above manuscript were incorrect. The left-hand box should read: “4203 allocated budesonide/formoterol maintenance and reliever therapy 160/4.5 µg one inhalation twice daily + as needed (1 × 2)”. The right-hand box should read: “4221 allocated budesonide/formoterol maintenance and reliever therapy 160/4.5 µg two inhalations twice daily + as needed (2 × 2)”. A corrected version of figure 1 from the above manuscript is presented below. The authors apologise for this error.



**FIGURE 1.** Flow chart of study design.