



# Serum YKL-40 as predictor of outcome in hypersensitivity pneumonitis

Xiaoping Long<sup>1,2</sup>, Xuan He<sup>1</sup>, Shinichiro Ohshimo<sup>3</sup>, Matthias Griese<sup>4</sup>,  
Rafael Sarria<sup>5</sup>, Josune Guzman<sup>6</sup>, Ulrich Costabel<sup>1</sup> and Francesco Bonella<sup>1</sup>

**Affiliations:** <sup>1</sup>Interstitial and Rare Lung Disease Unit, Ruhrlandklinik, University of Duisburg-Essen, Essen, Germany. <sup>2</sup>Dept of Respiratory Medicine, The First Affiliated Hospital of University of South China, Hengyang, P.R. China. <sup>3</sup>Dept of Molecular and Internal Medicine, Graduate School of Biomedical Sciences, Hiroshima University, Hiroshima, Japan. <sup>4</sup>Dr. von Haunersches Kinderspital, University of Munich, Member of the German Center for Lung Research, Munich, Germany. <sup>5</sup>Dept of Neurosciences, Faculty of Medicine and Dentistry, Basque Country University, Bilbao, Spain. <sup>6</sup>General and Experimental Pathology, Ruhr University, Bochum, Germany.

**Correspondence:** Francesco Bonella, Interstitial and Rare Lung Disease Unit, Ruhrlandklinik, University of Duisburg-Essen, 45239 Essen, Germany. E-mail: francesco.bonella@ruhrlandklinik.uk-essen.de

**ABSTRACT** YKL-40, a chitinase-like protein mainly secreted by macrophages, neutrophils and epithelial cells, is increased in patients with idiopathic interstitial pneumonia and sarcoidosis. We aimed to investigate the role of YKL-40 as a biomarker in hypersensitivity pneumonitis (HP).

72 HP patients, 100 interstitial lung disease (ILD) controls and 60 healthy controls were studied. YKL-40 was measured by ELISA in serum and bronchoalveolar lavage fluid (BALF) at baseline and follow-up. The relationship between YKL-40 levels, clinical variables and disease outcome was evaluated.

Baseline serum YKL-40 levels were significantly higher in HP patients than in healthy controls ( $p < 0.001$ ), but lower than in patients with other ILDs. Baseline BALF YKL-40 levels in HP patients were the highest among ILD patients. In HP patients, serum YKL-40 correlated with the diffusing capacity of the lung for carbon monoxide at baseline ( $p < 0.01$ ) and over time ( $p < 0.001$ ). HP patients whose disease progressed or who died had higher baseline YKL-40 levels than those who remained stable and survived ( $p < 0.001$ ). At a cut-off of  $119 \text{ ng}\cdot\text{mL}^{-1}$ , the baseline serum YKL-40 level predicted disease progression (hazard ratio 6.567;  $p < 0.001$ ), and at a cut-off of  $150 \text{ ng}\cdot\text{mL}^{-1}$  was associated with mortality (hazard ratio 9.989;  $p < 0.001$ ).

Serum YKL-40 may be a useful prognostic biomarker in HP patients.



@ERSpublications

**YKL-40 could help clinicians to assess disease activity and outcome of patients with hypersensitivity pneumonitis** <http://ow.ly/U4Qw304PTJ5>

Received: Nov 18 2015 | Accepted after revision: Sept 29 2016

Support statement: This study was supported by Arbeitsgemeinschaft zur Förderung der Pneumologie an der Ruhrlandklinik (AFPR). Funding information for this article has been deposited with the Open Funder Registry.

Conflict of interest: None declared.

Copyright ©ERS 2016

## Introduction

Hypersensitivity pneumonitis (HP), also called extrinsic allergic alveolitis, is a T-cell-driven immunologic lung disease caused by repeated exposure to organic particles in susceptible subjects [1, 2]. Type III and type IV hypersensitivity reactions are involved in the pathogenesis of HP [3]. HP may progress to severe pulmonary fibrosis [1, 4]. Therefore, there is a need to identify noninvasive biomarkers that can predict disease outcome in HP patients.

YKL-40 is a chitinase-like protein [5] mainly secreted by macrophages, neutrophils and epithelial cells, which is involved in the inflammatory response to tissue injury [6, 7]. It is best known as a biomarker for diseases that are characterised by inflammation, fibrosis and tissue remodelling [6, 8–10]. For instance, circulating levels of YKL-40 have been found to be associated with liver fibrosis [9], Crohn's disease [11] and rheumatoid arthritis [12]. Recently, YKL-40 has been proposed as a diagnostic and prognostic biomarker for various forms of interstitial lung disease (ILD), especially idiopathic pulmonary fibrosis (IPF) and sarcoidosis [8, 13, 14]. Whether YKL-40 is also associated with HP is unknown.

The aim of the present study was to determine the clinical utility of YKL-40 as a biomarker in HP patients. We hypothesised that YKL-40 is elevated in HP patients and that YKL-40 level is associated with disease outcome. Some of the results of this study have been previously reported in an abstract [15].

## Materials and methods

### Study subjects

We retrospectively studied 72 HP patients and 100 ILD controls (45 patients with IPF, 34 with idiopathic nonspecific interstitial pneumonia (iNSIP) and 21 with cryptogenic organising pneumonitis (COP)), who were followed in our institution between January 2007 and December 2013. 60 volunteers served as healthy controls. The diagnosis of HP and ILD was based on clinical/high-resolution computed tomography (HRCT) findings, bronchoalveolar lavage fluid (BALF) characteristics and/or histopathological findings on biopsy [1, 16–19]. Acute, subacute and chronic HP were defined as previously described [1, 16]. The study was approved by the local institutional review board (approval number 15-6486-BO) and the experiments complied with current laws in Germany. Informed consent was obtained from the ILD patients and healthy controls.

### Definition of disease progression in HP

Disease progression was defined as deterioration of self-reported symptoms (worsening of dyspnoea, cough, chest pain and weight loss), and/or lung function (decrease in forced vital capacity (FVC) >10% and/or diffusing capacity of the lung for carbon monoxide ( $DLCO$ )  $\geq$ 15%), and/or chest imaging (increase in existing or appearance of new infiltrates compatible with HP) since the last follow-up visit [20, 21]. Otherwise, the patients were defined as stable/improved.

### YKL-40 and lactate dehydrogenase laboratory assays

Serum samples were obtained from all patients at the first evaluation and in 39 HP patients also during follow-up at intervals ranging from 6 to 36 months. A total of 59 follow-up measurements were obtained. The samples were stored at  $-20^{\circ}\text{C}$  or  $-80^{\circ}\text{C}$  until analysis. Bronchoalveolar lavage was performed *via* a fiberoptic bronchoscope as previously described [22]; the supernatant was collected and stored at  $-80^{\circ}\text{C}$ . YKL-40 in serum and BALF was measured by ELISA (Quidel, San Diego, CA, USA) as previously described [23]. Lactate dehydrogenase (LDH) in serum was routinely measured (normal value for LDH  $<225\text{ U}\cdot\text{L}^{-1}$ ).

### Pulmonary function tests and blood gas analysis

Measurements including FVC, forced expiratory volume in 1 s ( $FEV_1$ ), total lung capacity (TLC),  $DLCO$ , arterial oxygen tension ( $P_{aO_2}$ ), arterial carbon dioxide tension ( $P_{aCO_2}$ ), arterial oxygen saturation ( $S_{aO_2}$ ) and alveolar–arterial oxygen tension difference ( $P_{A-aO_2}$ ) were performed at the time of blood sample collection. Values were expressed as percentages of predicted normal values [24].

### Statistical analysis

Continuous variables were evaluated for a normal distribution with the Kolmogorov–Smirnov test. Parametric data are presented as mean  $\pm$  SEM. Categorical variables are presented as either a percentage of the total or numerically, as appropriate. Multiple comparisons were performed by one-way ANOVA and least significant difference or Dunnett's *post hoc* tests. Comparison between two groups was done with t-test or Wilcoxon's rank test for continuous variables, and Chi-squared or Fisher's exact test for categorical variables. Spearman's correlation coefficient was obtained for correlations. Receiver operating characteristic (ROC) analysis was used to test the role of baseline YKL-40 in serum and BALF as a diagnostic marker of HP and a predictor of disease outcome. Univariate and multivariate Cox's proportional hazard regression models were used to analyse prognostic factors. The Kaplan–Meier method with log-rank test was used to analyse

whether baseline YKL-40 levels were associated with disease outcome. *p*-values of <0.05 were considered statistically significant. All statistical analyses were performed using SPSS 17.0 (SPSS Inc., Chicago, IL, USA).

## Results

### Characteristics of study subjects

Demographic and laboratory characteristics of the enrolled subjects are shown in table 1. The mean±SEM follow-up time of the HP patients was 38±2 months (range 1–60) from initial blood collection. Of the 72 HP patients, 11 presented with the acute/subacute form and 61 presented with the chronic form of HP. Relevant antigen exposures were fungi/moulds (4%), birds/feathers (74%), both (21%) or unknown (1%). During follow-up, 29 HP patients experienced disease progression (symptom worsening in 100%, lung function deterioration in 90%, chest imaging worsening in 38%). No patient had disease progression on the basis of symptoms alone. 16 HP patients died. The majority of patients in all groups were not treated with corticosteroids at baseline; these were those patients who were enrolled at the time of diagnosis, before treatment was started.

### Baseline serum and BALF levels of YKL-40

Serum YKL-40 levels were significantly higher in HP patients (127±9 ng·mL<sup>-1</sup>) than in healthy controls (39±4 ng·mL<sup>-1</sup>; *p*<0.001), but lower than in IPF (214±20 ng·mL<sup>-1</sup>; *p*<0.001), iNSIP (184±21 ng·mL<sup>-1</sup>; *p*<0.05) and COP (213±33 ng·mL<sup>-1</sup>; *p*<0.05) patients (figure 1a). Among all ILD patients, serum YKL-40 levels were higher in males than females (213±14 versus 163±12 ng·mL<sup>-1</sup>; *p*<0.01) and in smokers than nonsmokers (214±13 versus 161±12 ng·mL<sup>-1</sup>; *p*<0.01). Serum YKL-40 levels were higher in untreated patients than in those treated with corticosteroids (206±11 versus 141±13 ng·mL<sup>-1</sup>; *p*<0.001). Among HP patients, serum YKL-40 levels were higher in patients with acute/subacute disease than in those with chronic disease (179±27 versus 117±9 ng·mL<sup>-1</sup>; *p*<0.05).

TABLE 1 Demographics and characteristics of all enrolled subjects

	HP	IPF	iNSIP	COP	Controls
<b>Subjects</b>	72	45	34	21	60
<b>Demographics</b>					
Age years	57±2***	71±1***,***	68±2***,***	61±3***,§§,f	40±2
Sex male/female	28/44**	39/6***,***	17/17§§	6/15***,§§§	37/23
Smoking status current/ex/nonsmoker	0/24/48***	3/27/15***,***	1/17/16***	3/7/11*	10/7/33#
Steroid therapy yes/no	31/41***	8/37***,***	9/25***	4/17***,***	0/60
Disease duration months	79±6.5§§§	31±4.5***	50±9**	41±9**	NA
<b>BALF cell differential</b>					
Total cells ×10 <sup>4</sup> ·mL <sup>-1</sup>	29±2	17±1***	18±3***	18±3**	NA
Macrophages ×10 <sup>4</sup> ·mL <sup>-1</sup>	12±2	13±1	13±2	9±2	NA
Lymphocytes ×10 <sup>4</sup> ·mL <sup>-1</sup>	14±1	2±1***	4±1***,§	5±1***,§	NA
Granulocytes ×10 <sup>4</sup> ·mL <sup>-1</sup>	4±1	2±1	2±1	3±1	NA
Neutrophils ×10 <sup>4</sup> ·mL <sup>-1</sup>	1±0.3	2±0.4	2±1	2±1	NA
Eosinophils ×10 <sup>4</sup> ·mL <sup>-1</sup>	0.3±0.1	0.3±0.1	0.4±0.1	0.5±0.2	NA
<b>Pulmonary function<sup>¶</sup></b>					
FVC % pred	63±2***	72±3***,***	66±3***	83±5*,***,§,ff	90±3
FEV1 % pred	61±2***	76±3***,***	64±3***,§§	74±5***,***,ff	88±9
DLC0 % pred	42±2***	45±2***	49±3***,***	60±4***,***,§§,f	85±4
TLC % pred	70±2***	67±2***	61±2***,***	81±4***,§§,fff	89±3
<b>Blood gas analysis<sup>¶¶</sup></b>					
PaO <sub>2</sub> mmHg	69±1***	72±2***	74±2***	69±2***	86±4
PaCO <sub>2</sub> mmHg	38±1	37±1	38±1 <sup>§</sup>	35±1***,ff	37±5
PA-aO <sub>2</sub> mmHg	34±1***	31±2***	28±2***	37±2***,ff	14±2
SaO <sub>2</sub> %	94±1	95±1	95±1	95±1	95±2

Data are presented as mean±SEM unless otherwise stated. HP: hypersensitivity pneumonitis; IPF: idiopathic pulmonary fibrosis; iNSIP: idiopathic nonspecific interstitial pneumonia; COP: cryptogenic organising pneumonitis; NA: not available; BALF: bronchoalveolar lavage fluid; FVC: forced vital capacity; FEV1: forced expiratory volume in 1 s; DLC0: diffusing capacity of the lung for carbon monoxide; TLC: total lung capacity; PaO<sub>2</sub>: arterial oxygen tension; PaCO<sub>2</sub>: arterial carbon dioxide tension; PA-aO<sub>2</sub>: alveolar-arterial oxygen tension difference; SaO<sub>2</sub>: arterial oxygen saturation. #: smoking status was available in 50 healthy controls; ¶: pulmonary function and blood gas analysis were available in 18 healthy controls. \*: *p*<0.05, \*\*: *p*<0.01, \*\*\*: *p*<0.001, versus controls. +: *p*<0.05, \*\*: *p*<0.01, \*\*\*: *p*<0.001, versus HP. §: *p*<0.05, §§: *p*<0.01, §§§: *p*<0.001, versus IPF. f: *p*<0.05, ff: *p*<0.01, fff: *p*<0.001, versus iNSIP.

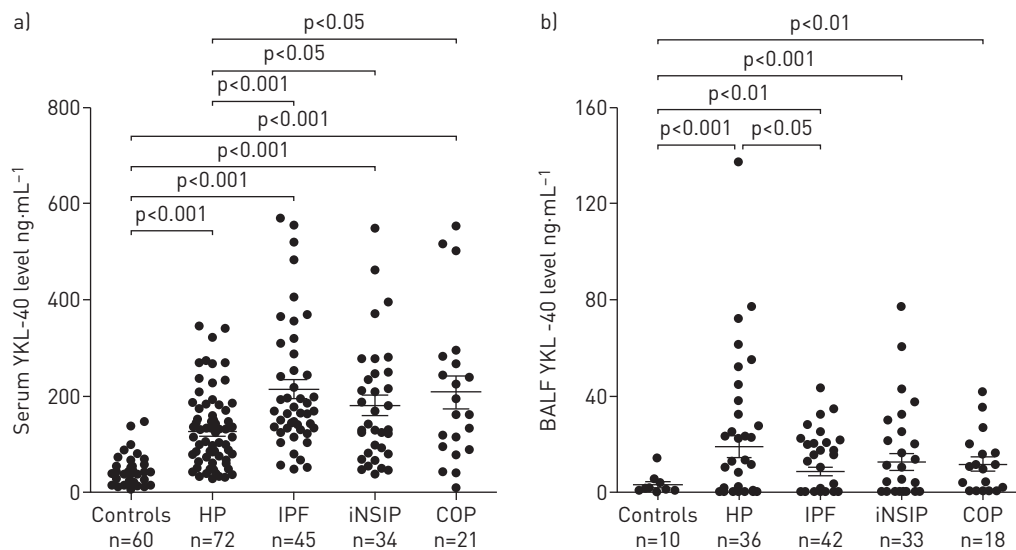


FIGURE 1 a) Serum and b) bronchoalveolar lavage fluid (BALF) YKL-40 levels in the studied subjects at baseline. Dots represent single patients. Bars represent mean $\pm$ SEM values. COP: cryptogenic organising pneumonia; HP: hypersensitivity pneumonitis; iNSIP: idiopathic nonspecific interstitial pneumonia; IPF: idiopathic pulmonary fibrosis.

BALF YKL-40 levels were significantly higher in HP patients ( $21\pm 5$  ng·mL $^{-1}$ ) than in healthy controls ( $3\pm 1$  ng·mL $^{-1}$ ;  $p < 0.001$ ) and in those with IPF ( $9\pm 2$  ng·mL $^{-1}$ ;  $p < 0.05$ ) (figure 1b). BALF YKL-40 levels were higher in patients with acute/subacute HP patients than in patients with chronic HP ( $42\pm 10$  versus  $15\pm 7$  ng·mL $^{-1}$ ;  $p < 0.05$ ). No effect of sex, smoking or treatment on BALF levels was observed (data not shown).

Using ROC analysis, at a cut-off of  $>47$  ng·mL $^{-1}$ , serum YKL-40 levels showed the best sensitivity (88%), specificity (77%) and accuracy (88%) to discriminate HP from healthy controls (area under the curve (AUC) 0.904;  $p < 0.001$ ), and at a cut-off of  $>134$  ng·mL $^{-1}$ , serum YKL-40 levels showed the best sensitivity (76%), specificity (61%) and accuracy (71%) to discriminate HP from IPF (AUC 0.727;  $p < 0.001$ ). For BALF YKL-40 levels, no significantly predictive cut-off value was found.

#### Correlations between serum YKL-40 and other characteristics in HP

Baseline serum YKL-40 levels positively correlated with baseline serum LDH levels ( $r=0.554$ ,  $p < 0.001$ ), BALF total cell counts ( $r=0.496$ ,  $p < 0.001$ ) and BALF lymphocyte counts ( $r=0.451$ ,  $p < 0.001$ ); a weak correlation was seen with age ( $r=0.264$ ,  $p < 0.05$ ). Serum YKL-40 levels inversely correlated with DLCO ( $r=-0.310$ ,  $p < 0.01$ ) (figure 2a) and FVC ( $r=-0.376$ ,  $p < 0.001$ ) at baseline. Moreover, changes in serum YKL-40 levels inversely correlated with changes in DLCO over time ( $r=-0.352$ ,  $p < 0.001$ ) (figure 2b), but not with changes in FVC ( $r=0.221$ ,  $p=0.176$ ).

#### Serum YKL-40 levels and disease outcome in HP

HP patients who experienced disease progression had higher baseline serum YKL-40 levels than those who remained stable during follow-up ( $167\pm 12$  versus  $98\pm 11$  ng·mL $^{-1}$ ;  $p < 0.001$ ) (figure 3a). HP patients who died ( $n=16$ ) had higher baseline serum YKL-40 levels than those who survived ( $n=56$ ) ( $190\pm 22$  versus  $107\pm 9$  ng·mL $^{-1}$ ;  $p < 0.001$ ) (figure 3b).

#### Predictive value of baseline serum YKL-40 levels for disease progression in HP

Using ROC analysis, at a cut-off level of  $>119$  ng·mL $^{-1}$ , serum YKL-40 levels showed the best sensitivity (81%), specificity (77%) and accuracy (79%) to predict disease progression (AUC 0.797;  $p < 0.001$ ). At a cut-off level of  $>303$  U·L $^{-1}$ , serum LDH showed similar results (sensitivity 78%, specificity 81%, accuracy 79%; AUC 0.811;  $p < 0.001$ ) (figure 4a). The combination of the two cut-offs (serum YKL-40 119 ng·mL $^{-1}$  and serum LDH 303 U·L $^{-1}$ ) yielded better results (sensitivity 81%, specificity 91% and accuracy 80%) to predict disease progression.

According to the best cut-off obtained by ROC analysis, we also divided all HP patients into a high YKL-40 level group ( $n=34$ ), with baseline concentrations  $>119$  ng·mL $^{-1}$ , and a low YKL-40 level group ( $n=38$ ) (baseline concentrations  $\leq 119$  ng·mL $^{-1}$ ). The characteristics of patients stratified according to this cut-off are shown in table 2.

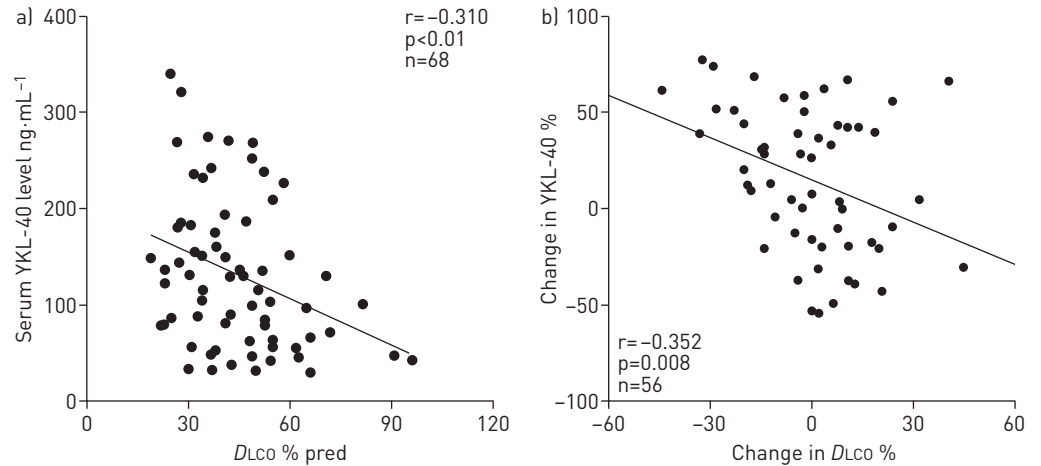


FIGURE 2 a) Correlation between baseline YKL-40 serum levels and diffusing capacity of the lung for carbon monoxide ( $DL_{CO}$ ) (% pred) at baseline. Dots represent single patients. b) Correlation between change in serum YKL-40 and  $DL_{CO}$  over time in 39 hypersensitivity pneumonitis patients. Dots represent 56 measurements performed in 39 patients at various time intervals ranging from 6 to 36 months.

Univariate and multivariate analyses were performed to verify whether the identified cut-off predicts disease progression. In the univariate analysis, baseline serum YKL-40 levels  $>119 \text{ ng}\cdot\text{mL}^{-1}$  were associated with an increased risk of disease progression (hazard ratio (HR) 6.567;  $p < 0.001$ ). In the multivariate analysis, serum YKL-40 levels  $>119 \text{ ng}\cdot\text{mL}^{-1}$  were independently associated with risk of disease progression after adjustment for age, sex, body mass index (BMI), smoking history, steroid therapy, disease type, baseline FVC,  $DL_{CO}$  and serum LDH as covariates (HR 5.208;  $p = 0.004$ ) (table 3).

Kaplan–Meier analysis confirmed the predictive value of serum YKL-40 for disease progression in HP (figure 5a). At 5 years, the rate of disease progression of all HP patients was 40%. The patients in the high YKL-40 group had a higher rate of disease progression (71%) than those in the low YKL-40 group (13%) (log-rank test,  $p < 0.001$ ).

#### Predictive value of baseline serum YKL-40 levels for mortality in HP

Using ROC analysis, at a cut-off level of  $>150 \text{ ng}\cdot\text{mL}^{-1}$ , serum YKL-40 levels showed the best sensitivity (78%), specificity (84%) and accuracy (83%) to predict death (AUC 0.787;  $p < 0.001$ ). For serum LDH, no predictive value for mortality was found ( $p > 0.05$ ) (figure 4b).

In the univariate analysis, baseline serum YKL-40 levels  $>150 \text{ ng}\cdot\text{mL}^{-1}$  were associated with an increased risk of death (HR 9.989;  $p < 0.001$ ). In the multivariate analysis, serum YKL-40 levels  $>150 \text{ ng}\cdot\text{mL}^{-1}$  were independently associated with the risk of death after adjustment for age, sex, BMI, smoking history, steroid therapy, disease type, baseline FVC,  $DL_{CO}$  and serum LDH as covariates (HR 6.413;  $p = 0.013$ ) (table 4).

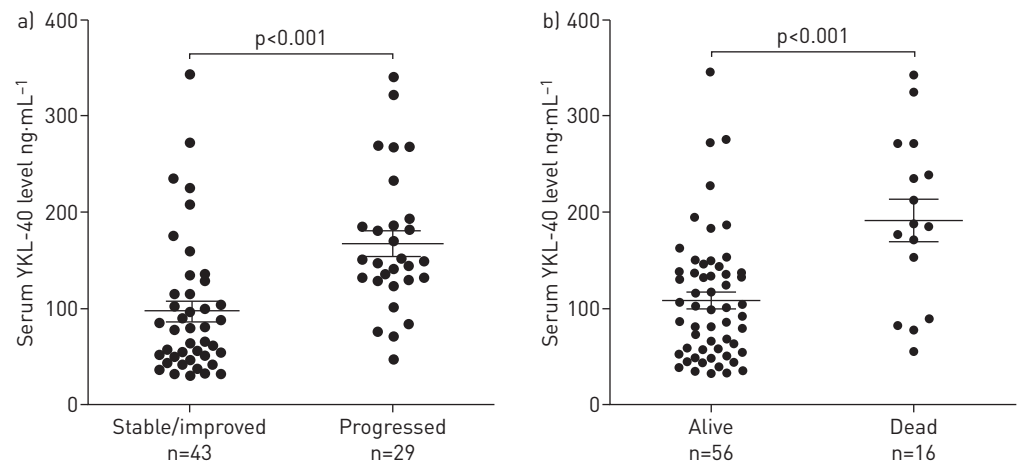


FIGURE 3 Comparisons of baseline serum YKL-40 levels in 72 hypersensitivity pneumonitis patients according to a) disease progression and b) survival. Dots represent single patients. Bars represent mean  $\pm$  SEM values.

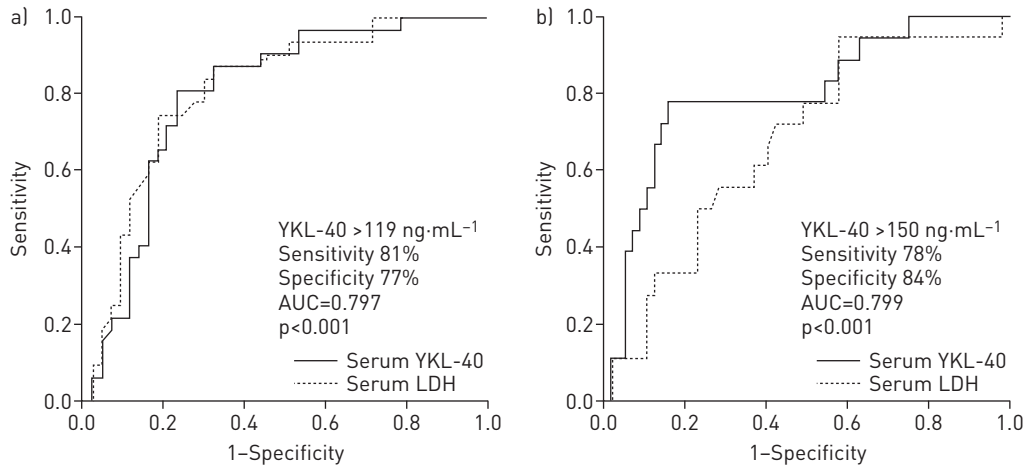


FIGURE 4 Receiver operating characteristic analysis showing the predictive value of baseline YKL-40 and lactate dehydrogenase (LDH) serum levels to predict a) disease progression and b) mortality in 72 hypersensitivity pneumonitis patients. AUC: area under the curve.

TABLE 2 Characteristics of 72 hypersensitivity pneumonitis (HP) patients stratified according to serum YKL-40 predictive cut-off level for disease progression

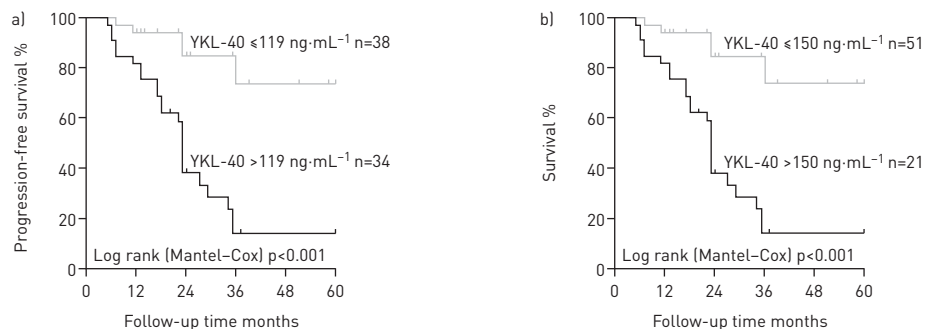
	YKL-40 ≤119 ng·mL <sup>-1</sup>	YKL-40 >119 ng·mL <sup>-1</sup>	p-value
<b>Subjects</b>	38	34	
<b>Demographics</b>			
Age years	54±2	61±2	NS
Sex male/female	15/23	13/21	NS <sup>#</sup>
Smoking habits current/ex/nonsmoker	0/12/26	0/12/22	NS <sup>#</sup>
Steroid therapy yes/no	19/19	12/22	NS <sup>#</sup>
Disease type acute/subacute or chronic	2/36	9/25	0.020 <sup>#</sup>
<b>Disease outcome</b>			
Disease progression yes/no	5/33	24/10	<0.001 <sup>#</sup>
HP-related death yes/no	4/34	12/22	0.012 <sup>#</sup>
<b>BALF cell differential</b>			
Total cells ×10 <sup>4</sup> mL <sup>-1</sup>	19±2	32±2	0.001
Macrophages ×10 <sup>4</sup> mL <sup>-1</sup>	9±2	13±2	NS
Lymphocytes ×10 <sup>4</sup> mL <sup>-1</sup>	8±1	16±1	<0.0001
Granulocytes ×10 <sup>4</sup> mL <sup>-1</sup>	2±1	4±1	NS
Neutrophils ×10 <sup>4</sup> mL <sup>-1</sup>	0.4±0.2	1.2±0.4	NS
Eosinophils ×10 <sup>4</sup> mL <sup>-1</sup>	0.1±0.04	0.3±0.08	NS
Mast cells ×10 <sup>4</sup> mL <sup>-1</sup>	0.03±0.01	0.1±0.06	NS
<b>Pulmonary function</b>			
FVC % pred	66±3	57±3	0.040
FEV1 % pred	63±3	59±3	NS
DLCO % pred	45±2	37±2	0.013
TLC % pred	69±3	70.5±3	NS
<b>Blood gas analysis</b>			
P <sub>a</sub> O <sub>2</sub> mmHg	70±2	68±2	NS
P <sub>A</sub> -aO <sub>2</sub> mmHg	33±2	35±2	NS
S <sub>a</sub> O <sub>2</sub> %	95±0.4	94±0.5	NS
<b>Biomarkers</b>			
Serum YKL-40 ng·mL <sup>-1</sup>	68±4	192±11	<0.0001
BALF YKL-40 ng·mL <sup>-1</sup>	14±5	26±8	NS
Serum LDH U·L <sup>-1</sup>	252±10	328±11	<0.0001

Data are presented as mean±SEM unless otherwise stated. NS: nonsignificant; BALF: bronchoalveolar lavage fluid; FVC: forced vital capacity; FEV1: forced expiratory volume in 1 s; DLCO: diffusing capacity of the lung for carbon monoxide; TLC: total lung capacity; P<sub>a</sub>O<sub>2</sub>: arterial oxygen tension; P<sub>A</sub>-aO<sub>2</sub>: alveolar-arterial oxygen tension difference; S<sub>a</sub>O<sub>2</sub>: arterial oxygen saturation; LDH: lactate dehydrogenase. <sup>#</sup>: Chi-square test or Fisher's exact test; for all other comparisons a t-test was used.

TABLE 3 Univariate and multivariate Cox proportional analysis for the risk of disease progression in 72 hypersensitivity pneumonitis patients

	Hazard ratio	95% CI	p-value
<b>Univariate analysis</b>			
Serum YKL-40 ng·mL <sup>-1</sup> (continuous)	1.009	1.005–1.014	<0.001
Serum YKL-40 >119 ng·mL <sup>-1</sup> (binary)	6.567	2.487–17.340	<0.001
Age years (continuous)	1.028	1.000–1.058	0.053
Sex (female=1)	0.991	0.466–2.106	NS
Steroid therapy (positive=1)	0.679	0.308–1.494	NS
Smoking history (positive=1)	0.997	0.974–1.021	NS
Disease type (acute/subacute=1)	0.328	0.136–0.788	0.013
Total cells ×10 <sup>4</sup> mL <sup>-1</sup> (continuous)	1.026	0.998–1.055	NS
Macrophages ×10 <sup>4</sup> mL <sup>-1</sup> (continuous)	1.013	0.981–1.047	NS
Lymphocytes ×10 <sup>4</sup> mL <sup>-1</sup> (continuous)	1.079	1.015–1.148	0.014
Granulocytes ×10 <sup>4</sup> mL <sup>-1</sup> (continuous)	1.099	0.941–1.284	NS
Neutrophils ×10 <sup>4</sup> mL <sup>-1</sup> (continuous)	1.271	1.036–1.560	0.022
Eosinophils ×10 <sup>4</sup> mL <sup>-1</sup> (continuous)	1.771	0.882–3.559	NS
Mast cells ×10 <sup>4</sup> mL <sup>-1</sup> (continuous)	6.161	1.510–25.141	0.011
FVC % pred (continuous)	0.989	0.963–1.015	NS
FEV <sub>1</sub> % pred (continuous)	0.997	0.947–1.021	NS
TLC % pred (continuous)	0.996	0.973–1.021	NS
DLco % pred (continuous)	0.948	0.918–0.978	0.001
P <sub>a</sub> O <sub>2</sub> mmHg (continuous)	1.003	0.974–1.034	NS
P <sub>A-a</sub> O <sub>2</sub> mmHg (continuous)	0.996	0.954–1.040	NS
S <sub>a</sub> O <sub>2</sub> % (continuous)	0.977	0.855–1.118	NS
Serum LDH U·L <sup>-1</sup> (continuous)	1.010	1.005–1.015	<0.001
Serum LDH >303 U·L <sup>-1</sup> (binary)	4.715	2.085–10.665	<0.001
BALF YKL-40 ng·mL <sup>-1</sup> (continuous)	1.011	0.999–1.024	NS
<b>Multivariate analysis<sup>#</sup></b>			
Serum YKL-40 ng·mL <sup>-1</sup> (continuous)	1.008	1.003–1.013	0.002
DLco % pred (continuous)	0.960	0.928–0.992	0.016
Serum YKL-40 >119 ng·mL <sup>-1</sup> (binary)	5.208	1.713–15.835	0.004
Serum LDH U·L <sup>-1</sup> (continuous)	1.008	1.001–1.014	0.017

Data are presented as hazard ratios, representing the relative risk of developing disease progression as a specific characteristic at baseline. Backward and forward stepwise (conditional likelihood ratio) analyses were performed. NS: nonsignificant; FVC: forced vital capacity; FEV<sub>1</sub>: forced expiratory volume in 1 s; TLC: total lung capacity; DLco: diffusing capacity of the lung for carbon monoxide; P<sub>a</sub>O<sub>2</sub>: arterial oxygen tension; P<sub>A-a</sub>O<sub>2</sub>: alveolar–arterial oxygen tension difference; S<sub>a</sub>O<sub>2</sub>: arterial oxygen saturation; LDH: lactate dehydrogenase; BALF: bronchoalveolar lavage fluid. #: after adjustment for age, sex, body mass index, smoking history, steroid therapy, disease type, baseline FVC, DLco and serum LDH.



Number at risk						Number at risk						
YKL-40 ≤119 ng·mL <sup>-1</sup>	38	36	34	33	33	YKL-40 ≤119 ng·mL <sup>-1</sup>	51	51	50	48	48	47
YKL-40 >119 ng·mL <sup>-1</sup>	34	28	17	10	10	YKL-40 >119 ng·mL <sup>-1</sup>	21	17	15	12	12	9

FIGURE 5 Kaplan-Meier analysis showing a) disease progression and b) survival rate according to serum YKL-40 levels in 72 hypersensitivity pneumonitis patients. The respective cut-off levels are indicated.

TABLE 4 Univariate and multivariate Cox proportional analysis for the risk of death in 72 hypersensitivity pneumonitis patients

	Hazard ratio	95% CI	p-value
<b>Univariate analysis</b>			
Serum YKL-40 ng·mL <sup>-1</sup> (continuous)	1.010	1.005–1.015	<0.001
Serum YKL-40 >150 ng·mL <sup>-1</sup> (binary)	9.989	3.187–31.312	<0.001
Age years (continuous)	1.107	1.047–1.171	<0.001
Sex (female=1)	1.068	0.387–2.947	NS
Steroid therapy (positive=1)	1.499	0.561–4.007	NS
Smoking history (positive=1)	1.460	0.471–4.531	NS
Disease type (acute/subacute=1)	0.296	0.103–0.855	0.025
Total cells ×10 <sup>4</sup> mL <sup>-1</sup> (continuous)	1.083	1.033–1.135	0.001
Macrophages ×10 <sup>4</sup> mL <sup>-1</sup> (continuous)	1.069	1.024–1.117	0.003
Lymphocytes ×10 <sup>4</sup> mL <sup>-1</sup> (continuous)	1.044	0.958–1.317	NS
Granulocytes ×10 <sup>4</sup> mL <sup>-1</sup> (continuous)	1.087	0.933–1.266	NS
Neutrophils ×10 <sup>4</sup> mL <sup>-1</sup> (continuous)	1.399	1.107–1.768	0.005
Eosinophils ×10 <sup>4</sup> mL <sup>-1</sup> (continuous)	1.899	0.528–6.822	NS
Mast cells ×10 <sup>4</sup> mL <sup>-1</sup> (continuous)	5.540	1.286–23.860	0.022
FVC % pred (continuous)	0.949	0.907–0.992	0.021
FEV <sub>1</sub> , % pred (continuous)	0.975	0.941–1.011	NS
TLC % pred (continuous)	0.989	0.955–1.024	NS
D <sub>LCO</sub> , % pred (continuous)	0.961	0.922–1.003	0.001
P <sub>aO2</sub> mmHg (continuous)	1.011	0.969–1.054	NS
P <sub>A-aO2</sub> mmHg (continuous)	0.989	0.945–1.036	NS
S <sub>aO2</sub> % (continuous)	1.013	0.839–1.223	NS
Serum LDH U·L <sup>-1</sup> (continuous)	1.006	1.000–1.013	0.058
BALF YKL-40 ng·mL <sup>-1</sup> (continuous)	1.002	0.980–1.024	NS
<b>Multivariate analysis<sup>#</sup></b>			
Serum YKL-40 ng·mL <sup>-1</sup> (continuous)	1.010	1.001–1.019	0.024
Age years (continuous)	1.132	1.054–1.215	0.001
FVC % pred (continuous)	0.945	0.901–0.990	0.018
Serum YKL-40 >150 ng·mL <sup>-1</sup> (binary)	6.413	1.472–27.933	0.013
Age years (continuous)	1.137	1.055–1.226	0.001
FVC % pred (continuous)	0.950	0.907–0.995	0.029

Data are presented as hazard ratios, representing the relative risk of death as a specific characteristic at baseline. Backward and forward stepwise (conditional LR) analyses were performed. NS: nonsignificant; FVC: forced vital capacity; FEV<sub>1</sub>: forced expiratory volume in 1 s; TLC: total lung capacity; D<sub>LCO</sub>: diffusing capacity of the lung for carbon monoxide; P<sub>aO2</sub>: arterial oxygen tension; P<sub>A-aO2</sub>: alveolar–arterial oxygen tension difference; S<sub>aO2</sub>: arterial oxygen saturation; LDH: lactate dehydrogenase; BALF: bronchoalveolar lavage fluid. <sup>#</sup>: after adjustment for age, sex, body mass index, smoking history, steroid therapy, disease type, baseline FVC, D<sub>LCO</sub> and serum LDH.

Kaplan–Meier analysis showed that higher serum YKL-40 was associated with mortality in HP (figure 5b). The mortality rate of all HP patients after 5 years was 22%. The patients in the high YKL-40 group had a higher mortality rate (57%) than those in the low YKL-40 group (8%) (log-rank test, p<0.001).

## Discussion

In this study, we show that serum and BALF YKL-40 levels are elevated in HP patients and other ILD patients compared with healthy controls, and correlate with pulmonary function tests (PFTs) and BALF cell counts. Moreover, serum YKL-40 was found to be an independent predictor of disease progression and mortality in HP. To the best of our knowledge, this is the first investigation of YKL-40 levels in serum and BALF and its potential role as a biomarker in HP.

HP is caused by repeated inhalation of organic particles; thus, antigen presentation and hypersensitivity reactions are involved in the development of this disorder [1, 3]. As previously reported, antigen-presenting cells produce YKL-40 in response to specific stimulation [25, 26]. Thus, it can be speculated that activated antigen-presenting cells in the lung of HP patients are responsible for the elevated levels of YKL-40 in BALF of these patients. In support of this hypothesis, we found a positive correlation between serum YKL-40 levels and BALF lymphocyte counts in HP patients. Although lymphocytes cannot directly produce YKL-40, they can induce the production of interleukin-13, which can stimulate YKL-40 production in macrophages, dendritic cells and epithelial cells [7]. On the other hand,



YKL-40 levels were higher in serum than BALF of patients with HP and other ILDs, suggesting a possible spill-over of YKL-40 from the bloodstream to the alveolar space. This has also been reported in a previous study on YKL-40 in IPF [23]. As postulated for asthma [27], the elevated concentration of YKL-40 in serum of HP patients may reflect the activity of antigen-presenting cells and the systemic immune response. In line with this hypothesis, serum and BALF levels of YKL-40 were significantly higher in acute/subacute HP patients than in those with chronic HP.

Serum YKL-40 was inversely correlated with PFTs at baseline; this finding has also been observed in IPF [13] and sarcoidosis [28]. Interestingly, change in YKL-40 levels in serum also correlated with change in DLCO over time. Moreover, the serum level of YKL-40 correlated well with LDH, a nonspecific marker of tissue injury widely used to monitor the course of acute lung disease and chronic fibrotic disease [29].

We found that HP patients with progressive disease had higher levels of YKL-40 than those who remained stable or improved. Serum YKL-40 levels  $>119 \text{ ng}\cdot\text{mL}^{-1}$  predicted disease progression with a sensitivity of 81% and specificity of 77%, similar to serum LDH (cut-off  $303 \text{ U}\cdot\text{L}^{-1}$ , sensitivity 78%, specificity 81%). Moreover, the combined assessment of serum YKL-40 and LDH provided better results (sensitivity 81%, specificity 91%) than either single marker alone. By using the identified cut-off to stratify the patients, those with serum YKL-40 levels  $>119 \text{ ng}\cdot\text{mL}^{-1}$  had worse PFTs and a higher rate of disease progression (71%) than those with serum YKL-40  $\leq 119 \text{ ng}\cdot\text{mL}^{-1}$  (13%). The multivariate analysis confirmed that both a serum YKL-40 level  $>119 \text{ ng}\cdot\text{mL}^{-1}$  and YKL-40 as a continuous variable were independently associated with disease progression, even after adjusting for covariates. The same was not observed for serum LDH.

Moreover, HP patients with serum YKL-40 levels  $>150 \text{ ng}\cdot\text{mL}^{-1}$  had worse PFTs and a worse survival (57% mortality rate) compared with those with  $\leq 150 \text{ ng}\cdot\text{mL}^{-1}$  (8% mortality rate). The multivariate analysis confirmed that a serum YKL-40 level  $>150 \text{ ng}\cdot\text{mL}^{-1}$  was associated with mortality, even after adjusting for covariates. This predictive cut-off for survival in our cohort is approximately two-fold higher than that reported in IPF patients ( $79 \text{ ng}\cdot\text{mL}^{-1}$ ) [23]. This suggests that production of YKL-40 level is enhanced in HP patients with active disease, and correlates with outcome.

The thresholds for serum YKL-40 described in this study might be different in other cohorts. However, this does not impact our main finding that HP patients with high serum YKL-40 levels at baseline may have a higher rate of disease progression (or death) than those with lower levels. In recent years, there has been increasing interest in defining accurate predictors of outcome in HP: a higher fibrosis score on HRCT [30], increasing severity of traction bronchiectasis [31], lower lymphocyte levels in BALF [32] and a usual interstitial pneumonia-like pattern on histology [31, 32] have been found to correlate with disease outcome. Whereas MYAZAKI *et al.* [32] previously identified a low lymphocyte level in BALF as a potential risk factor for acute exacerbation of HP, in our cohort a higher BALF lymphocyte count was seen in the HP group with high YKL-40 levels, driven by the higher number of patients with acute/subacute disease in this group. However, univariate and multivariate analyses demonstrated that lymphocyte count was not an independent predictive factor for disease progression or survival.

Besides clinical characteristics, two biomarkers have been studied in the past to evaluate outcome in HP patients: KL-6 [33, 34] and CCL17 [35]. Serum KL-6 has been shown to predict disease progression and survival in HP patients [33, 34], whereas serum CCL17 was shown to be a predictor of disease progression but not of survival [35].

With regard to the factors responsible for YKL-40 variability, we found, in agreement with others [36, 37], that YKL-40 serum levels correlated with age in our entire cohort, but the correlation was weak (data not shown). As reported previously [36, 38], we also found that former and current smokers had higher serum YKL-40 levels than never-smokers. Cigarette smoke increases the permeability of the air–blood membrane [39] and could increase both production and spill-over of YKL-40; it has been shown that YKL-40 expression is increased in alveolar macrophages and epithelial cells in lung tissue of cigarette smokers with chronic obstructive pulmonary disease and cigarette smoke-exposed mice [37]. We believe that smoking habits should be taken into consideration when interpreting YKL-40 serum levels. The relevance of this aspect for HP patients is low, since the majority of HP patients are nonsmokers. Moreover, we observed that corticosteroid-treated patients had significantly lower levels of serum YKL-40 levels than untreated patients, suggesting that corticosteroids may suppress YKL-40 release [40, 41]. This observation has not been reported in other studies of ILD patients and could be of clinical utility in assessing the clinical response to steroid treatment in HP patients.

Despite the novel findings of this study, it has several limitations. First, the healthy controls were younger than the ILD patients, and this difference could affect the respective serum levels of YKL-40. Secondly, only limited data on serum YKL-40 levels during follow-up were available, and these data did not allow us to assess the clinical value of serial YKL-40 measurements. Thirdly, baseline single nucleotide

polymorphisms in the chitinase 3-like 1 (CHI3L1) encoding gene, known to influence YKL-40 levels in serum, were not determined [23]. Finally, immunohistochemistry to demonstrate YKL-40 in lung tissue obtained by biopsy was not performed, and therefore we can only speculate on the source and localisation of this protein in HP and other ILDs.

In conclusion, this study indicates that serum YKL-40 can be a prognostic biomarker in HP, suggesting a clinical role in predicting disease progression and survival, but its serum levels should be carefully interpreted in light of the confounding factors. Although the data are promising, a multicentre validation study is necessary to determine whether serum YKL-40 measurements should be routinely used in HP.

## Acknowledgements

Authors' contributions: X. Long and F. Bonella contributed to the conception and design of the study, sample collection, measurement of biomarkers, analysis and interpretation of the data, and drafting and finalisation of the manuscript. X. He collected samples and performed biomarker measurement. S. Ohshimo and M. Griese contributed to analysis and interpretation of the data. R. Sarria and J. Guzman contributed to the conception and design of the study, and drafting of the manuscript. U. Costabel contributed to the conception and design of the study, and finalisation of the manuscript. All authors have read and approved the final manuscript.

## References

- 1 Costabel U, Bonella F, Guzman J. Chronic hypersensitivity pneumonitis. *Clin Chest Med* 2012; 33: 151–163.
- 2 Selman M. Hypersensitivity pneumonitis: a multifaceted deceiving disorder. *Clin Chest Med* 2004; 25: 531–547.
- 3 Mohr LC. Hypersensitivity pneumonitis. *Curr Opin Pulm Med* 2004; 10: 401–411.
- 4 Jinta T, Miyazaki Y, Kishi M, et al. The pathogenesis of chronic hypersensitivity pneumonitis in common with idiopathic pulmonary fibrosis: expression of apoptotic markers. *Am J Clin Pathol* 2010; 134: 613–620.
- 5 Hakala BE, White C, Recklies AD. Human cartilage gp-39, a major secretory product of articular chondrocytes and synovial cells, is a mammalian member of a chitinase protein family. *J Biol Chem* 1993; 268: 25803–25810.
- 6 Lee CG, Cruz CSD, Herzog E, et al. YKL-40, a chitinase-like protein at the intersection of inflammation and remodeling. *Am J Respir Crit Care Med* 2012; 185: 692–694.
- 7 Lee CG, Da Silva CA, Dela Cruz CS, et al. Role of chitin and chitinase/chitinase-like proteins in inflammation, tissue remodeling, and injury. *Annu Rev Physiol* 2011; 73: 479–501.
- 8 Korthagen NM, van Moorsel CHM, Zanen P, et al. Evaluation of circulating YKL-40 levels in idiopathic interstitial pneumonias. *Lung* 2014; 192: 975–980.
- 9 Berres ML, Papen S, Pauels K, et al. A functional variation in CHI3L1 is associated with severity of liver fibrosis and YKL-40 serum levels in chronic hepatitis C infection. *J Hepatol* 2009; 50: 370–376.
- 10 Bara I, Ozier A, Girodet PO, et al. Role of YKL-40 in bronchial smooth muscle remodeling in asthma. *Am J Respir Crit Care Med* 2012; 185: 715–722.
- 11 Erzin Y, Uzun H, Karatas A, et al. Serum YKL-40 as a marker of disease activity and stricture formation in patients with Crohn's disease. *J Gastroenterol Hepatol* 2008; 23(8 Pt 2): e357–e362.
- 12 Kazakova M, Batalov A, Deneva T, et al. Relationship between sonographic parameters and YKL-40 levels in rheumatoid arthritis. *Rheumatol Int* 2013; 33: 341–346.
- 13 Furuhashi K, Suda T, Nakamura Y, et al. Increased expression of YKL-40, a chitinase-like protein, in serum and lung of patients with idiopathic pulmonary fibrosis. *Respir Med* 2010; 104: 1204–1210.
- 14 Johansen JS, Milman N, Hansen M, et al. Increased serum YKL-40 in patients with pulmonary sarcoidosis—a potential marker of disease activity? *Respir Med* 2005; 99: 396–402.
- 15 Long X, Costabel U, He X, et al. Serum YKL-40 as a candidate biomarker for hypersensitivity pneumonitis. *Pneumologie* 2015; 69: S5.
- 16 Lacasse Y, Selman M, Costabel U, et al. Clinical diagnosis of hypersensitivity pneumonitis. *Am J Respir Crit Care Med* 2003; 168: 952–958.
- 17 Raghu G, Collard HR, Egan JJ, et al. An Official ATS/ERS/JRS/ALAT Statement: Idiopathic Pulmonary Fibrosis: Evidence-Based Guidelines for Diagnosis and Management. *Am J Respir Crit Care Med* 2011; 183: 788–824.
- 18 ATS/ERS. American Thoracic Society/European Respiratory Society International Multidisciplinary Consensus Classification of the Idiopathic Interstitial Pneumonias. *Am J Respir Crit Care Med* 2002; 165: 277–304.
- 19 Travis WD, Costabel U, Hansell DM, et al. An Official American Thoracic Society/European Respiratory Society Statement: Update of the International Multidisciplinary Classification of the Idiopathic Interstitial Pneumonias. *Am J Respir Crit Care Med* 2013; 188: 733–748.
- 20 Bonella F, Ohshimo S, Miaotian C, et al. Serum KL-6 is a predictor of outcome in pulmonary alveolar proteinosis. *Orphanet J Rare Dis* 2013; 8: 53.
- 21 Schmidt SL, Tayob N, Han MK, et al. Predicting pulmonary fibrosis disease course from past trends in pulmonary function. *Chest* 2014; 145: 579–585.
- 22 Klech H, Pohl W. Technical recommendations and guidelines for bronchoalveolar lavage (BAL). Report of the European Society of Pneumology Task Group. *Eur Respir J* 1989; 2: 561–585.
- 23 Korthagen NM, van Moorsel CHM, Barlo NP, et al. Serum and BALF YKL-40 levels are predictors of survival in idiopathic pulmonary fibrosis. *Respir Med* 2011; 105: 106–113.
- 24 Standardized lung function testing. Official statement of the European Respiratory Society. *Eur Respir J Suppl* 1993; 16: 1–100.
- 25 Liu CY, Li Q, Zhou XD, et al. The chitinase-like protein YKL-40 increases mucin5AC production in human bronchial epithelial cells. *Exp Cell Res* 2013; 319: 2866–2873.
- 26 Riabov V, Gudima A, Wang N, et al. Role of tumor associated macrophages in tumor angiogenesis and lymphangiogenesis. *Physiology* 2014; 5: 75.
- 27 Tang H, Fang Z, Sun Y, et al. YKL-40 in asthmatic patients, and its correlations with exacerbation, eosinophils and immunoglobulin E. *Eur Respir J* 2010; 35: 757–760.

- 28 Kruit A, Grutters JC, Ruven HJT, *et al.* A CHI3L1 gene polymorphism is associated with serum levels of YKL-40, a novel sarcoidosis marker. *Respir Med* 2007; 101: 1563–1571.
- 29 Drent M, Cobben NA, Henderson RF, *et al.* Usefulness of lactate dehydrogenase and its isoenzymes as indicators of lung damage or inflammation. *Eur Respir J* 1996; 9: 1736–1742.
- 30 Mooney JJ, Elicker BM, Urbania TH, *et al.* Radiographic fibrosis score predicts survival in hypersensitivity pneumonitis. *Chest* 2013; 144: 586–592.
- 31 Walsh SLF, Sverzellati N, Devaraj A, *et al.* Chronic hypersensitivity pneumonitis: high resolution computed tomography patterns and pulmonary function indices as prognostic determinants. *Eur Radiol* 2012; 22: 1672–1679.
- 32 Miyazaki Y, Tateishi T, Akashi T, *et al.* Clinical predictors and histologic appearance of acute exacerbations in chronic hypersensitivity pneumonitis. *Chest* 2008; 134: 1265–1270.
- 33 Ishikawa N, Hattori N, Yokoyama A, *et al.* Utility of KL-6/MUC1 in the clinical management of interstitial lung diseases. *Respir Investig* 2012; 50: 3–13.
- 34 Ohnishi H, Miyamoto S, Kawase S, *et al.* Seasonal variation of serum KL-6 concentrations is greater in patients with hypersensitivity pneumonitis. *BMC Pulm Med* 2014; 14: 129.
- 35 Miyazaki Y, Unoura K, Tateishi T, *et al.* Higher serum CCL17 may be a promising predictor of acute exacerbations in chronic hypersensitivity pneumonitis. *Respir Res* 2013; 14: 57.
- 36 Guerra S, Halonen M, Sherrill DL, *et al.* The relation of circulating YKL-40 to levels and decline of lung function in adult life. *Respir Med* 2013; 107: 1923–1930.
- 37 Matsuura H, Hartl D, Kang MJ, *et al.* Role of breast regression protein-39 in the pathogenesis of cigarette smoke-induced inflammation and emphysema. *Am J Respir Cell Mol Biol* 2011; 44: 777–786.
- 38 Sakazaki Y, Hoshino T, Takei S, *et al.* Overexpression of chitinase 3-like 1/YKL-40 in lung-specific IL-18-transgenic mice, smokers and COPD. *PLoS One* 2011; 6: e24177.
- 39 Li XY, Donaldson K, Rahman I, *et al.* An investigation of the role of glutathione in increased epithelial permeability induced by cigarette smoke in vivo and in vitro. *Am J Respir Crit Care Med* 1994; 149: 1518–1525.
- 40 Johansen JS, Stoltenberg M, Hansen M, *et al.* Serum YKL-40 concentrations in patients with rheumatoid arthritis: relation to disease activity. *Rheumatology (Oxford)* 1999; 38: 618–626.
- 41 Kzhyshkowska J, Mamidi S, Gratchev A, *et al.* Novel stabilin-1 interacting chitinase-like protein (SI-CLP) is up-regulated in alternatively activated macrophages and secreted via lysosomal pathway. *Blood* 2006; 107: 3221–3228.